
Statistical Report on UNHCR Registered Iraqis and Non-Iraqis Iraq, Egypt, Iran, Jordan, Lebanon, Syria, Turkey, and the GCC countries

Table of Contents

Page	Report
1	Table of Contents
2	Regional Iraqi Monthly Statistical Report
3	Iraq All Active Population Report
4	Egypt All Active Population Report
5	Egypt Iraqi Monthly Statistical Report
6	Iran All Active Population Report
7	Iran Iraqi Monthly Statistical Report
8	Jordan All Active Population Report
9	Jordan Iraqi Monthly Statistical Report
10	Lebanon All Active Population Report
11	Lebanon Iraqi Monthly Statistical Report
12	Syria All Active Population Report
13	Syria Iraqi Monthly Statistical Report
14	Turkey All Active Population Report
15	Turkey Iraqi Monthly Statistical Report
16	GCC All Active Population Report
17	GCC Iraqi Monthly Statistical Report

30-Apr-11 202,408

Registered Iraqi Population Trends

	Beginning of year/ month	End of year/ month	Increases		Decreases					Adjustments (due to retro-active data entry)
			New Registration	Reactivated/ Reopened	Resettlement Departure	Voluntary Repatriation Departure	Own Departure (Return/3rd Country)	Inactivated (No Contact)	Other Closures (Death, Withdrawal)	
2007	73,524	233,535	168,402	1,897	3,613	5	740	813	5,087	
2008	233,535	310,413	103,151	1,795	17,903	943	1,907	4,133	3,236	
2009	310,413	228,050	50,047	2,867	22,739	1,559	2,275	104,758	3,945	
2010	228,050	194,239	39,587	6,008	16,173	530	3,064	55,393	4,851	605
2011										
January	194,239	197,216	4,151	532	963	63	251	346	251	173
February	197,216	199,179	3,527	420	819	52	236	610	813	553
March	199,179	201,451	3,572	522	466	45	363	602	757	426
April	201,451	202,408	2,376	295	142	56	344	449	207	(540)
May	202,408									
June										
July										
August										
September										
October										
November										
December										
Sub Total			13,626	1,769	2,390	216	1,194	2,007	2,028	612

Demography, place of origin and specific protection/assistance needs of the Currently Active Iraqis

Individuals

Female	94,709	46.8%
Male	107,699	53.2%
Total	202,408	

Age	0-4	5-11	12-17	18-59	60+
Female	8,163	14,034	11,904	53,166	7,442
Male	8,724	15,097	12,700	63,983	7,195
Total	16,887	29,131	24,604	117,149	14,637
	8.3%	14.4%	12.2%	57.9%	7.2%

Cases

Cases	77,328
Female-Headed	21,121

Avg. case size 2.6

Avg. case size excluding single person cases 4.0

Governorate of Origin

Anbar	7,203	3.8%
Babylon	1,971	1.0%
Baghdad	130,068	68.7%
Diyala	4,865	2.6%
Kerbala	2,119	1.1%
Najaf	1,977	1.0%
Salah al-Din	2,869	1.5%
Wassit	1,007	0.5%
Ninewa	19,499	10.3%
Tameem	2,517	1.3%
Dahuk	408	0.2%
Erbil	268	0.1%
Sulaymaniyah	261	0.1%
Basrah	9,323	4.9%
Missan	625	0.3%
Muthanna	1,089	0.6%
Qadissiya	1,011	0.5%
Thi-Qar	2,296	1.2%
n/a	13,032	

% of the total place of origin with address specified

Ethnic Origin

Arab	168,468	83.2%
Armenian	1,461	0.7%
Assyrian	6,086	3.0%
Chaldean	15,219	7.5%
Kurd	4,182	2.1%
Turkmen	1,656	0.8%
Others, n/a	5,336	2.6%

Year of Arrival

Pre-2006	38,617	19.1%
2006	49,908	24.7%
2007	36,536	18.1%
2008	16,323	8.1%
2009	22,223	11.0%
2010	31,924	15.8%
2011	6,877	3.4%

Religious Background

Christianity	27,202	13.4%
Islam (Shiah)	41,808	20.7%
Islam (Sunni)	116,433	57.5%
Islam (unspecified)	8,344	4.1%
Sabeen/Mandean	5,522	2.7%
Yezidis	883	0.4%
Others, n/a	2,216	1.1%

Specific Needs

	% of the total active Iraqis	
Critical medical condition	36,576	18.1%
Persons with disabilities	5,236	2.6%
Woman at risk	9,206	4.5%
Single parent	831	0.4%
Child or adolescent at risk	4,881	2.4%
Unaccompanied or separated child	491	0.2%
Family unity	2,877	1.4%
Older person at risk	4,465	2.2%
Special legal and protection needs	12,285	6.1%
Survivor of torture	17,667	8.7%

An individual can have more than one specific need

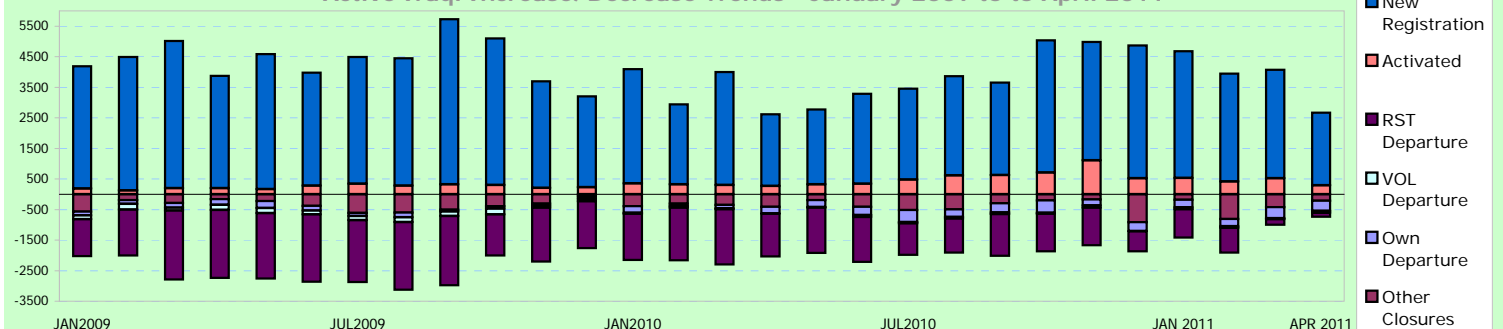
Individuals with Specific Needs: **66,809** 33.0%

Refugees	196,375
Asylum Seekers	5,520

Others	513
--------	-----

Non-Iraqi Dependents	2,691
----------------------	-------

Active Iraqi Increase/Decrease Trends - January 2009 to April 2011



All Registered	Refugees	Asylum Seekers
39,311	35,691	3,620

Summary of Active Caseload

Country of Origin and Status of Active Caseload

Country of Origin	Total	% of Total	Individually Recognized Refugees	Prima Facie Refugees	Asylum Seekers
Turkey	17,044	43.4%	1	16,595	448
Palestine	10,741	27.3%	-	10,741	-
Iran	9,878	25.1%	1,355	6,705	1,818
Syria	1,628	4.1%	31	256	1,341
Uganda	3	0.0%	-	-	3
Yemen	3	0.0%	-	-	3
Afghanistan	3	0.0%	2	-	1
Jordan	2	0.0%	-	2	-
Algeria	1	0.0%	-	-	1
Ethiopia	1	0.0%	1	-	-
Somalia	5	0.0%	-	1	4
Sudan	1	0.0%	-	1	-
Libya	1	0.0%	-	-	1
Total	39,311	100.0%	1,390	34,301	3,620

Ethnic Origin	Turkish
Kurds	17,044
Total	17,044

Ethnic Origin	Iranians
Kurds	9,341
Arabs	515
Farsi	38
Not specified	14
Total	9,908

Ethnic Origin	Syrians
Kurds	1,420
Arab	193
Total	1,613

Location in	Total	% of Total	Country of Origin					Others
			Turkey	Palestine	Iran	Syria		
Anbar	500	1.3%	-	230	263	-	7	
Babylon	-	0.0%	-	-	-	-	-	
Baghdad	10,780	27.4%	-	10,500	79	193	8	
Diyala	-	0.0%	-	-	-	-	-	
Kerbala	-	0.0%	-	-	-	-	-	
Najaf	-	0.0%	-	-	-	-	-	
Salah al-Din	-	0.0%	-	11	-	-	-	
Wassit	-	0.0%	-	-	-	-	-	
Ninewa	11,959	30.4%	11,959	-	-	-	-	
Tameem	-	0.0%	-	-	-	-	-	
Dahuk	5,997	15.3%	4,872	-	43	1,082	-	
Erbil	4,072	10.4%	207	-	3,538	323	4	
Sulaymaniyah	5,663	14.4%	6	-	5,626	30	1	
Basrah	176	0.4%	-	-	176	-	-	
Missan	153	0.4%	-	-	153	-	-	
Muthanna	-	0.0%	-	-	-	-	-	
Qadissiya	-	0.0%	-	-	-	-	-	
Thi-Qar	-	0.0%	-	-	-	-	-	
Totals	39,311	100.0%	17,044	10,741	9,878	1,628	20	

Resettlement: January - April 2011

Country of Origin	Cases	Individuals	Resettlement Event	Pending Decision or Decision Taken by
Iranians	14	65	Referred/Re-referred	HUB
Iranians	2	7	Referred/Re-referred	HQ
Iranians	2	7	Submitted/Re-submitted	Denmark
Iranians	1	1	Submitted/Re-submitted	Netherlands
Iranians	1	1	Submitted/Re-submitted	Sweden
Iranians	4	15	Submitted/Re-submitted	USA
Iranians	3	8	Rejected	Denmark
Iranians	1	1	Rejected	Sweden
Iranians	1	9	Departed	Sweden
Palestinians	2	6	Referred/Re-referred	HQ
Palestinians	3	14	Referred/Re-referred	HUB
Palestinians	1	2	Submitted/Re-submitted	Denmark
Palestinians	1	2	Accepted	France
Palestinians	1	4	Accepted	Switzerland
Palestinians	1	2	Rejected	Norway
Palestinians	1	5	Departed	Finland
Palestinians	1	2	Departed	France
Palestinians	2	4	Departed	France
Palestinians	9	27	Departed	USA
Syrian	1	1	Referred/Re-referred	HUB
Syrian	1	1	Submitted/Re-submitted	Netherlands
Totals	53	184		

	All Registered	Refugees	Asylum Seekers	Total Refugees & Asylum Seekers	Others
Iraqis	7,277	5,760	1,495	7,255	22
Non-Iraqis	34,266	18,700	15,544	34,244	22
Totals	41,543	24,460	17,039	41,499	44

Summary in 2011

Country of Origin and Status of Active Caseload

Country of Origin	Total	% of Total	Refugees	Asylum Seekers	Total Refugees & Asylum Seekers	Others
Sudan	23,482	56.5%	10,290	13,178	23,468	14
Iraq	7,277	17.5%	5,760	1,495	7,255	22
Somalia	6,826	16.4%	6,259	566	6,825	1
Eritrea	1,731	4.2%	930	800	1,730	1
Ethiopia	1,171	2.8%	581	590	1,171	-
Côte d'Ivoire	332	0.8%	206	121	327	5
Yemen	219	0.5%	208	11	219	-
DR Congo	57	0.1%	24	33	57	-
Palestine	51	0.1%	24	27	51	-
Burundi	46	0.1%	43	3	46	-
Others	351	0.8%	135	215	350	1
Total	41,543	100.0%	24,460	17,039	41,499	44

Dependents of Iraqis from Other Countries

Palestine	3
Saudi Arabia	1
Turkey	1
Total	5

Note: Others are from countries apart from the top ten.

	Registration in 2011			
	New Registration		Reactivation/ Reopened	
	Month	Cumulative	Month	Cumulative
Iraqis	43	324	25	110
Non-Iraqis	227	1,073	36	167
Total	270	1,397	61	277

	Resettlement in 2011			
	Submissions		Departures	
	Month	Cumulative	Month	Cumulative
Iraqis	-	48	16	35
Non-Iraqis	-	86	2	51
Total	-	134	18	86

*Some non-Iraqis are dependents of Iraqis so are resettled with Iraqi cases.

	Inactivation & Other Decreases in 2011			
	Inactivation (no contact)		Other Closures	
	Month	Cumulative	Month	Cumulative
Iraqis	3	10	7	17
Non-Iraqis	5	19	2	14
Total	8	29	9	31

	Repatriation & Other Departures in 2011			
	Voluntary Repatriation Assisted		Own Departure	
	Month	Cumulative	Month	Cumulative
Iraqis	13	40	21	49
Non-Iraqis	53	165	27	121
Total	66	205	48	170

Registered Iraqi Population Trends

	Beginning of year/ month	End of year/ month	Increases		Decreases					Adjustments (due to retro-active data entry)
			New Registration	Reactivated/ Reopened	Resettlement Departure	Voluntary Repatriation Assisted	Own Departure (Return/3rd Country)	Inactivated (No Contact)	Other Closures (Death, Withdrawal)	
2007	3,025	10,512	8,715	31	90	5	15	1	1,148	
2008	10,512	10,170	1,566	31	106	167	777	0	889	
2009	10,170	7,212	666	193	369	671	768	1,886	123	
2010	7,212	6,964	712	731	287	201	347	711	102	(43)
2011										
January	6,964	7,033	81	17	11	6	15	4	1	8
February	7,033	7,098	64	7	1	3	5	-	3	6
March	7,098	7,259	136	61	7	18	8	3	6	6
April	7,259	7,277	43	25	16	13	21	3	7	10
May	7,277									
June										
July										
August										
September										
October										
November										
December										
Sub Total			324	110	35	40	49	10	17	30

Demography, place of origin and specific protection/assistance needs of the Currently Active Iraqis

Individuals		Age	0-4	5-11	12-17	18-59	60+
Female	3,617 49.7%	Female	158	536	546	2,119	258
Male	3,660 50.3%	Male	170	606	545	2,094	245
Total	7,277	Total	328	1,142	1,091	4,213	503
			4.5%	15.7%	15.0%	57.9%	6.9%

Cases		Avg. case size	2.5	Avg. case size excluding single person cases	3.9
Cases	2,852				
Female-Headed	988 34.6%				

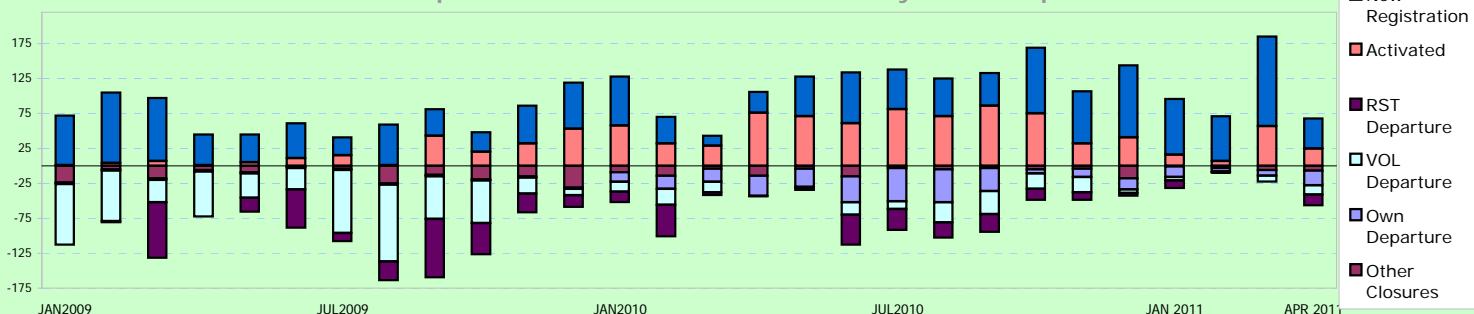
Governorate of Origin		Ethnic Origin		Religious Background	
Anbar	44 0.8%	Arab	6,395 87.9%	Christianity	104 1.4%
Babylon	40 0.7%	Armenian	- 0.0%	Islam (Shiah)	977 13.4%
Baghdad	5,109 91.3%	Assyrian	4 0.1%	Islam (Sunni)	3,983 54.7%
Diyala	72 1.3%	Chaldean	19 0.3%	Islam (unspecified)	2,001 27.5%
Kerbala	14 0.3%	Kurd	50 0.7%	Sabeen/Mandean	- 0.0%
Najaf	12 0.2%	Turkmen	17 0.2%	Yezidis	- 0.0%
Salah al-Din	52 0.9%	Others, n/a	792 10.9%	Others, n/a	212 2.9%
Wassit	8 0.1%				
Ninewa	80 1.4%				
Tameem	3 0.1%				
Dahuk	- 0.0%				
Erbil	1 0.0%				
Sulaymaniyah	- 0.0%				
Basrah	120 2.1%				
Missan	24 0.4%				
Muthanna	1 0.0%				
Qadissiya	9 0.2%				
Thi-Qar	7 0.1%				
n/a	1,681				

Year of Arrival		Specific Needs	% of the total active Iraqis
Pre-2006	1,516 20.8%	Critical medical condition	655 9.0%
2006	3,471 47.7%	Persons with disabilities	44 0.6%
2007	1,116 15.3%	Woman at risk	59 0.8%
2008	363 5.0%	Single parent	53 0.7%
2009	294 4.0%	Child or adolescent at risk	1 0.0%
2010	476 6.5%	Unaccompanied or separated child	7 0.1%
2011	41 0.6%	Family unity	- 0.0%
		Older person at risk	99 1.4%
		Special legal and protection needs	68 0.9%
		Survivor of torture	3 0.0%

Refugees	5,760	Others	22	Non-Iraqi Dependents	5
Asylum Seekers	1,495				

Individuals with Specific Needs: **864 11.9%**

Active Iraqi Increase/Decrease Trends - January 2009 to April 2011



	All Registered	Refugees	Asylum Seekers	Total Refugees & Asylum Seekers	Others
Iraqis	3,579	3,564	14	3,578	1
Non-Iraqis	11,332	10,306	1,009	11,315	17
Totals	14,911	13,870	1,023	14,893	18

*These statistics do not include the vast majority of Iraqi refugees who are registered with the government but not with UNHCR-Iran.

Summary in 2011

Country of Origin and Status of Active Caseload

Country of Origin	Total	% of Total	Refugees	Asylum Seekers	Total Refugees & Asylum Seekers	Others
Afghanistan	11,194	75.1%	10,223	971	11,194	-
Iraq	3,579	24.0%	3,564	14	3,578	1
Uzbekistan	62	0.4%	55	7	62	-
Pakistan	41	0.3%	13	28	41	-
Iran	18	0.1%	2	-	2	16
Kuwait	8	0.1%	8	-	8	-
Tajikistan	3	0.0%	2	1	3	-
Syria	1	0.0%	-	1	1	-
Morocco	1	0.0%	1	-	1	-
Sri Lanka	1	0.0%	1	-	1	-
Others	3	0.0%	-	-	-	-
Total	14,911	100.0%	13,870	1,023	14,893	18

Note: Others are from countries apart from the top ten.

Dependents of Iraqis from Other Countries

Iran	16
Sri Lanka	1
Morocco	1
Total	18

Registration in 2011

	New Registration		Reactivation/ Reopened	
	Month	Cumulative	Month	Cumulative
Iraqis	1	3	-	-
Non-Iraqis	56	429	8	30
Total	57	432	8	30

Resettlement in 2011

	Submissions		Departures	
	Month	Cumulative	Month	Cumulative
Iraqis	-	-	-	-
Non-Iraqis	133	160	119	212
Total	133	160	119	212

*Some non-Iraqis are dependents of Iraqis so are resettled with Iraqi cases.

Inactivation & Other Decreases in 2011

	Inactivation (no contact)		Other Closures	
	Month	Cumulative	Month	Cumulative
Iraqis	4	14	-	-
Non-Iraqis	190	608	9	44
Total	194	622	9	44

Repatriation & Other Departures in 2011

	Voluntary Repatriation Assisted		Own Departure	
	Month	Cumulative	Month	Cumulative
Iraqis	-	-	-	-
Non-Iraqis	-	-	-	-
Total	-	-	-	-

Registered Iraqi Population Trends

	Beginning of year/ month	End of year/ month	Increases		Decreases					Adjustments (due to retro-active data entry)	
			New Registration	Reactivated/ Reopened	Resettlement Departure	Voluntary Repatriation Assisted	Own Departure (Return/3rd Country)	Inactivated (No Contact)	Other Closures (Death, Withdrawal)		
2007	735	4,466	3,822	8	93	-	-	-	-	6	
2008	4,466	4,775	737	15	16	-	8	406	13		
2009	4,775	4,424	80	3	38	-	6	355	35		
2010	4,424	3,590	18	2	12	-	-	798	37		(7)
2011											
January	3,590	3,586	-	-	-	-	-	4	-	-	
February	3,586	3,586	-	-	-	-	-	-	-	-	
March	3,586	3,582	2	-	-	-	-	6	-	-	
April	3,582	3,579	1	-	-	-	-	4	-	-	
May	3,579										
June											
July											
August											
September											
October											
November											
December											
Sub Total			3	-	-	-	-	14	-	-	

Demography, place of origin and specific protection/assistance needs of the Currently Active Iraqis

Individuals

Female	1,484	41.5%
Male	2,095	58.5%
Total	3,579	

Age

	0-4	5-11	12-17	18-59	60+
Female	31	284	181	890	98
Male	53	302	219	1,397	124
Total	84	586	400	2,287	222
	2.3%	16.4%	11.2%	63.9%	6.2%

Cases

Cases	1,433
Female-Headed	207

Avg. case size 2.5

Avg. case size excluding single person cases 4.0

Governorate of Origin

Anbar	-	0.0%
Babylon	-	0.0%
Baghdad	933	71.5%
Diyala	18	1.4%
Kerbala	-	0.0%
Najaf	140	10.7%
Salah al-Din	9	0.7%
Wassit	28	2.1%
Ninewa	11	0.8%
Tameem	-	0.0%
Dahuk	2	0.2%
Erbil	5	0.4%
Sulaymaniyah	6	0.5%
Basrah	70	5.4%
Missan	12	0.9%
Muthanna	4	0.3%
Qadissiya	48	3.7%
Thi-Qar	18	1.4%
n/a	2,275	

Ethnic Origin

Arab	2,203	61.6%
Armenian	-	0.0%
Assyrian	-	0.0%
Chaldean	-	0.0%
Kurd	293	8.2%
Turkmen	9	0.3%
Others, n/a	1,074	30.0%

Religious Background

Christianity	4	0.1%
Islam (Shiah)	2,058	57.5%
Islam (Sunni)	140	3.9%
Islam (unspecified)	24	0.7%
Sabeen/Mandean	2	0.1%
Yezidis	-	0.0%
Others, n/a	1,351	37.7%

Year of Arrival

Pre-2006	290	8.1%
2006	314	8.8%
2007	2,618	73.1%
2008	320	8.9%
2009	29	0.8%
2010	8	0.2%
2011	-	0.0%

Specific Needs % of the total active Iraqis

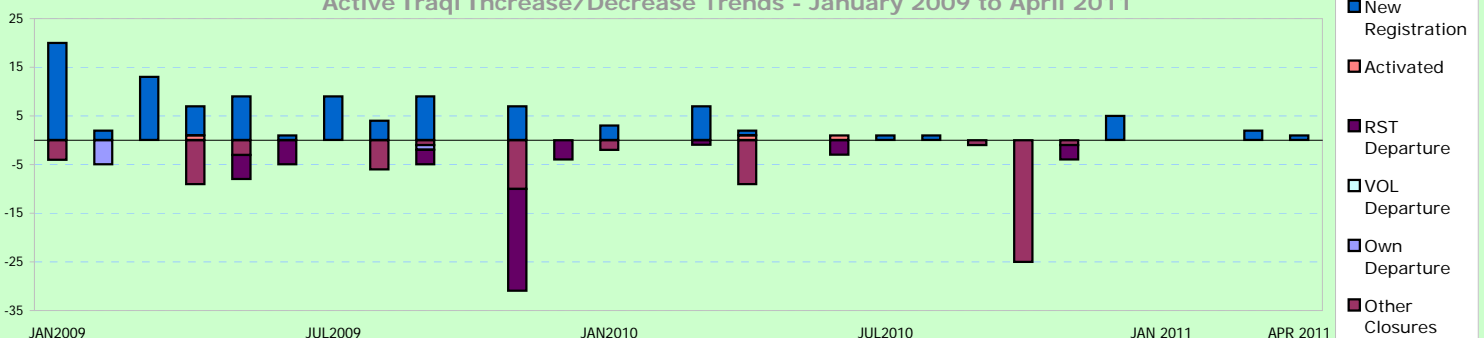
Critical medical condition	163	4.6%
Persons with disabilities	48	1.3%
Woman at risk	10	0.3%
Single parent	1	0.0%
Child or adolescent at risk	-	0.0%
Unaccompanied or separated child	-	0.0%
Family unity	1	0.0%
Older person at risk	1	0.0%
Special legal and protection needs	11	0.3%
Survivor of torture	1	0.0%
Individuals with Specific Needs:	232	6.5%

Refugees 3,564
Asylum Seekers 14

Others 1

Non-Iraqi Dependents 18

Active Iraqi Increase/Decrease Trends - January 2009 to April 2011



	All Registered	Refugees	Asylum Seekers	Total Refugees & Asylum Seekers	Others
Iraqis	32,421	31,646	765	32,411	10
Non-Iraqis	2,254	960	856	1,816	438
Totals	34,675	32,606	1,621	34,227	448

Summary in 2011

Country of Origin and Status of Active Caseload

Country of Origin	Total	% of Total	Refugees	Asylum Seekers	Total Refugees & Asylum Seekers	Others
Iraq	32,421	93.5%	31,646	765	32,411	10
Sudan	595	1.7%	348	243	591	4
Syria	537	1.5%	196	337	533	4
Jordan	322	0.9%	-	-	-	322
Somalia	290	0.8%	241	49	290	-
Egypt	122	0.4%	25	70	95	27
Stateless	61	0.2%	45	14	59	2
Palestine	61	0.2%	-	-	-	61
Afghanistan	44	0.1%	15	29	44	-
Russia	42	0.1%	41	1	42	-
Others	180	0.5%	49	111	160	18
Total	34,675	100.0%	32,606	1,621	34,227	448

Dependents of Iraqis from Other Countries

Jordan	318
Palestine	61
Egypt	37
Syria	6
Lebanon	5
USA	3
Ukraine	2
Stateless	2
Indonesia	1
Russia	1
Others	2
Total	438

Note: Others are from countries apart from the top ten.

Registration in 2011

New Registration Reactivation/ Reopened

	New Registration		Reactivation/ Reopened	
	Month	Cumulative	Month	Cumulative
Iraqis	367	2,669	63	379
Non-Iraqis	65	262	3	50
Total	432	2,931	66	429

Resettlement in 2011

Submissions Departures

	Submissions		Departures	
	Month	Cumulative	Month	Cumulative
Iraqis	351	1,259	24	282
Non-Iraqis	16	62	2	8
Total	367	1,321	26	290

*Some non-Iraqis are dependents of Iraqis so are resettled with Iraqi cases.

Inactivation & Other Decreases in 2011

Inactivation (no contact) Other Closures

	Inactivation (no contact)		Other Closures	
	Month	Cumulative	Month	Cumulative
Iraqis	341	1,399	117	327
Non-Iraqis	13	13	74	169
Total	354	1,412	191	496

Repatriation & Other Departures in 2011

Voluntary Repatriation Assisted Own Departure

	Voluntary Repatriation Assisted		Own Departure	
	Month	Cumulative	Month	Cumulative
Iraqis	8	33	15	100
Non-Iraqis	1	2	1	2
Total	9	35	16	102

Registered Iraqi Population Trends

	Beginning of year/ month	End of year/ month	Increases		Decreases					Adjustments (due to retro-active data entry)
			New Registration	Reactivated/ Reopened	Resettlement Departure	Voluntary Repatriation Assisted	Own Departure (Return/3rd Country)	Inactivated (No Contact)	Other Closures (Death, Withdrawal)	
2007	21,999	50,635	31,088	392	1,429	-	62	37	1,316	
2008	50,635	52,443	9,790	427	6,639	103	530	18	1,119	
2009	52,443	38,744	6,849	455	5,462	274	813	13,598	856	
2010	38,744	31,476	7,983	1,066	3,444	107	507	11,334	1,419	494
2011										
January	31,476	32,117	919	118	119	11	24	228	32	18
February	32,117	32,360	703	100	107	10	32	407	38	34
March	32,360	32,506	680	98	32	4	29	423	140	(4)
April	32,506	32,421	367	63	24	8	15	341	117	(10)
May	32,421									
June										
July										
August										
September										
October										
November										
December										
Sub Total			2,669	379	282	33	100	1,399	327	38

Demography, place of origin and specific protection/assistance needs of the Currently Active Iraqis

Individuals

Female	15,748	48.6%
Male	16,673	51.4%
Total	32,421	

Age

	0-4	5-11	12-17	18-59	60+
Female	1,423	2,068	1,587	9,007	1,663
Male	1,547	2,227	1,724	9,806	1,369
Total	2,970	4,295	3,311	18,813	3,032
	9.2%	13.2%	10.2%	58.0%	9.4%

Cases

Cases	13,646
Female-Headed	4,302

Avg. case size 2.4

Avg. case size excluding single person cases 3.7

Governorate of Origin

Anbar	876	2.8%
Babylon	359	1.1%
Baghdad	24,314	76.9%
Diyala	701	2.2%
Kerbala	172	0.5%
Najaf	222	0.7%
Salah al-Din	370	1.2%
Wassit	188	0.6%
Ninewa	1,069	3.4%
Tameem	300	0.9%
Dahuk	51	0.2%
Erbil	69	0.2%
Sulaymaniyah	75	0.2%
Basrah	1,481	4.7%
Missan	66	0.2%
Muthanna	539	1.7%
Qadissiya	162	0.5%
Thi-Qar	596	1.9%
n/a	811	

% of the total place of origin with address specified

Ethnic Origin

Arab	28,567	88.1%
Armenian	241	0.7%
Assyrian	622	1.9%
Chaldean	1,535	4.7%
Kurd	888	2.7%
Turkmen	202	0.6%
Others, n/a	366	1.1%

Year of Arrival

Pre-2006	7,476	23.1%
2006	6,199	19.1%
2007	4,089	12.6%
2008	2,373	7.3%
2009	3,964	12.2%
2010	6,660	20.5%
2011	1,660	5.1%

Religious Background

Christianity	3,272	10.1%
Islam (Shiah)	7,560	23.3%
Islam (Sunni)	21,058	65.0%
Islam (unspecified)	56	0.2%
Sabeen/Mandean	354	1.1%
Yezidis	57	0.2%
Others, n/a	64	0.2%

Specific Needs % of the total active Iraqis

Critical medical condition	4,062	12.5%
Persons with disabilities	865	2.7%
Woman at risk	725	2.2%
Single parent	52	0.2%
Child or adolescent at risk	30	0.1%
Unaccompanied or separated child	75	0.2%
Family unity	69	0.2%
Older person at risk	471	1.5%
Special legal and protection needs	1,448	4.5%
Survivor of torture	683	2.1%

An individual can have more than one specific need

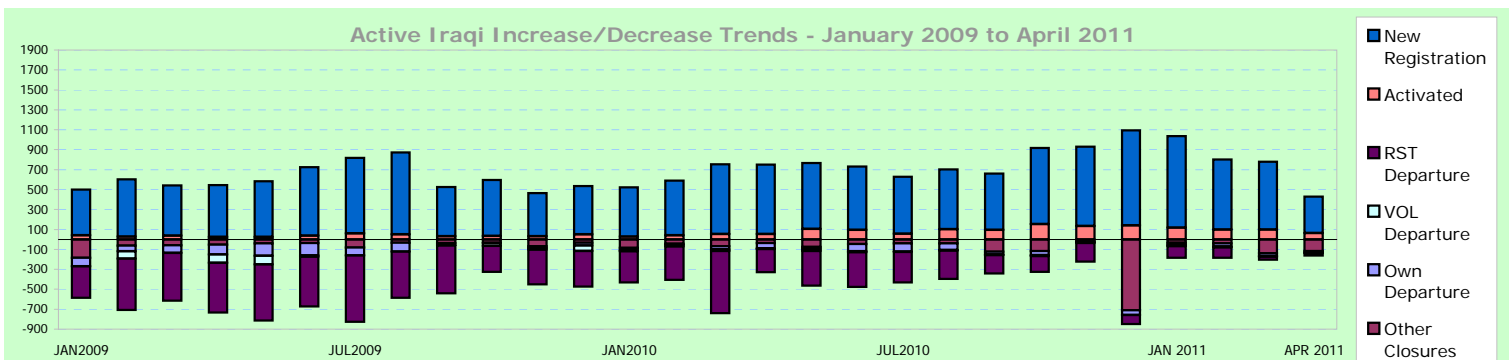
Individuals with Specific Needs: 6,799 21.0%

Refugees 31,646

Asylum Seekers 765

Others 10

Non-Iraqi Dependents 438



	All Registered	Refugees	Asylum Seekers	Total Refugees & Asylum Seekers	Others
Iraqis	9,272	8,446	820	9,266	6
Non-Iraqis	1,625	303	678	981	644
Totals	10,897	8,749	1,498	10,247	650

Summary in 2011

Country of Origin and Status of Active Caseload

Country of Origin	Total	% of Total	Refugees	Asylum Seekers	Total Refugees & Asylum Seekers	Others
Iraq	9,272	85.1%	8,446	820	9,266	6
Sudan	565	5.2%	130	418	548	17
Lebanon	519	4.8%	2	7	9	510
Syria	250	2.3%	45	181	226	24
Iran	42	0.4%	37	4	41	1
Somalia	32	0.3%	19	10	29	3
Palestine	30	0.3%	4	-	4	26
Jordan	27	0.2%	15	10	25	2
Egypt	22	0.2%	9	11	20	2
Ethiopia	22	0.2%	-	6	6	16
Others	116	1.1%	42	31	73	43
Total	10,897	100.0%	8,749	1,498	10,247	650

Note: Others are from countries apart from the top ten.

Dependents of Iraqis from Other Countries

Lebanon	510
Syria	26
Palestine	24
Philippines	15
Sri Lanka	5
Canada	4
Sudan	4
Ethiopia	3
Jordan	2
Armenia	1
Others	9
Total	603

Registration in 2011				
	New Registration		Reactivation/ Reopened	
	Month	Cumulative	Month	Cumulative
Iraqis	248	1,569	14	48
Non-Iraqis	70	211	5	15
Total	318	1,780	19	63

Resettlement in 2011				
	Submissions		Departures	
	Month	Cumulative	Month	Cumulative
Iraqis	361	1,080	8	161
Non-Iraqis	33	77	-	10
Total	394	1,157	8	171

*Some non-Iraqis are dependents of Iraqis so are resettled with Iraqi cases.

Inactivation & Other Decreases in 2011				
	Inactivation (no contact)		Other Closures	
	Month	Cumulative	Month	Cumulative
Iraqis	35	274	10	139
Non-Iraqis	2	53	26	298
Total	37	327	36	437

Repatriation & Other Departures in 2011				
	Voluntary Repatriation Assisted		Own Departure	
	Month	Cumulative	Month	Cumulative
Iraqis	1	31	8	40
Non-Iraqis	-	1	4	8
Total	1	32	12	48

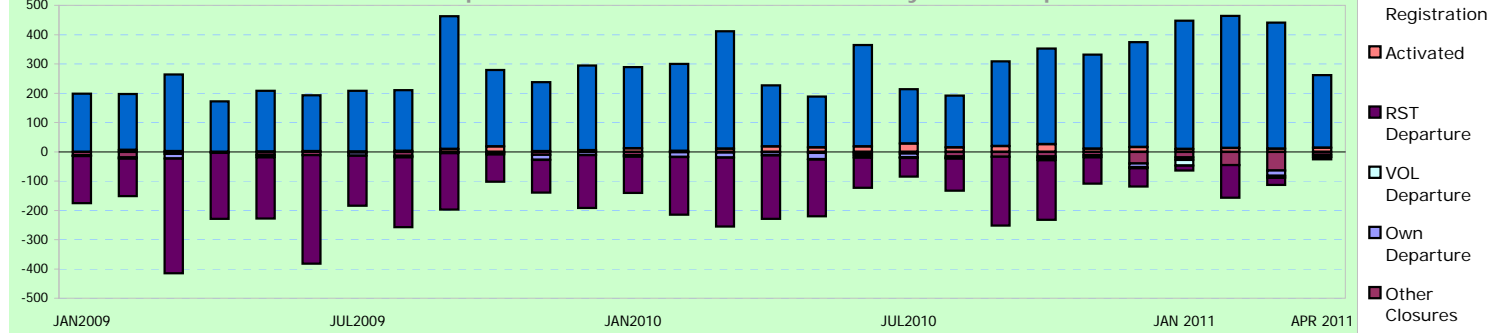
Registered Iraqi Population Trends

	Beginning of year/ month	End of year/ month	Increases		Decreases					Adjustments (due to retro-active data entry)
			New Registration	Reactivated/ Reopened	Resettlement Departure	Voluntary Repatriation Assisted	Own Departure (Return/3rd Country)	Inactivated (No Contact)	Other Closures (Death, Withdrawal)	
2007	4,090	9,804	6,449	25	416	-	218	14	112	
2008	9,804	10,268	2,012	37	1,298	-	141	44	166	
2009	10,268	8,748	2,875	49	2,481	-	89	1,761	113	
2010	8,748	8,285	3,365	191	1,845	47	102	1,878	133	(14)
2011										
January	8,285	8,626	439	9	17	20	10	45	19	4
February	8,626	8,818	451	15	111	3	4	120	45	9
March	8,818	9,070	431	10	25	7	18	74	65	-
April	9,070	9,272	248	14	8	1	8	35	10	2
May	9,272									
June										
July										
August										
September										
October										
November										
December										
Sub Total			1,569	48	161	31	40	274	139	15

Demography, place of origin and specific protection/assistance needs of the Currently Active Iraqis

Individuals		Age					
Female	3,607 38.9%	0-4	490	553	377	2,007	180
Male	5,665 61.1%	5-11	546	640	440	3,864	175
Total	9,272	12-17	1,036	1,193	817	5,871	355
		18-59	11.2%	12.9%	8.8%	63.3%	3.8%
		60+					
Cases		Avg. case size 2.6		Avg. case size excluding single person cases 3.9			
Cases	3,820						
Female-Headed	403 10.5%						
Governorate of Origin		Ethnic Origin		Religious Background			
Anbar	65 0.8%	Arab	4,337 46.8%	Christianity	4,632 50.0%		
Babylon	127 1.6%	Armenian	100 1.1%	Islam (Shiah)	3,110 33.5%		
Baghdad	4,942 60.5%	Assyrian	261 2.8%	Islam (Sunni)	1,288 13.9%		
Diyala	174 2.1%	Chaldean	3,307 35.7%	Islam (unspecified)	172 1.9%		
Kerbala	167 2.0%	Kurd	63 0.7%	Sabeen/Mandean	17 0.2%		
Najaf	193 2.4%	Turkmen	15 0.2%	Yezidis	9 0.1%		
Salah al-Din	15 0.2%	Others, n/a	1,189 12.8%	Others, n/a	44 0.5%		
Wassit	143 1.8%						
Ninewa	1,629 20.0%	Year of Arrival		Specific Needs			
Tameem	78 1.0%	Pre-2006	1,627 17.5%	Critical medical condition	377 4.1%		
Dahuk	19 0.2%	2006	721 7.8%	Persons with disabilities	123 1.3%		
Erbil	9 0.1%	2007	669 7.2%	Woman at risk	161 1.7%		
Sulaymaniyah	6 0.1%	2008	521 5.6%	Single parent	12 0.1%		
Basrah	269 3.3%	2009	2,075 22.4%	Child or adolescent at risk	40 0.4%		
Missan	38 0.5%	2010	2,984 32.2%	Unaccompanied or separated child	12 0.1%		
Muthanna	58 0.7%	2011	675 7.3%	Family unity	0 0.0%		
Qadissiya	90 1.1%			Older person at risk	74 0.8%		
Thi-Qar	143 1.8%			Special legal and protection needs	71 0.8%		
no data	1,107			Survivor of torture	25 0.3%		
% of the total place of origin with address specified				An individual can have more than one specific need			
				Individuals with Specific Needs:	833 9.0%		
Refugees	8,446	Others	6	Non-Iraqi Dependents	603		
Asylum Seekers	820						

Active Iraqi Increase/Decrease Trends - January 2009 to April 2011



	All Registered	Refugees	Asylum Seekers	Total Refugees & Asylum Seekers	Others
Iraqis	141,157	139,981	709	140,690	467
Non-Iraqis	9,165	5,913	1,773	7,686	1,479
Totals	150,322	145,894	2,482	148,376	1,946

Summary in 2011

Country of Origin and Status of Active Caseload

Country of Origin	Total	% of Total	Refugees	Asylum Seekers	Total Refugees & Asylum Seekers	Others
Iraq	141,157	93.9%	139,981	709	140,690	467
Somalia	3,298	2.2%	2,913	371	3,284	14
Afghanistan	2,228	1.5%	1,764	457	2,221	7
Syria	1,260	0.8%	2	3	5	1,255
Sudan	1,007	0.7%	600	383	983	24
Iran	357	0.2%	212	140	352	5
Yemen	161	0.1%	71	88	159	2
Jordan	120	0.1%	45	36	81	39
Palestine	109	0.1%	29	42	71	38
Stateless	90	0.1%	62	22	84	6
Others	535	0.4%	215	231	446	89
Total	150,322	100.0%	145,894	2,482	148,376	1,946

Dependents of Iraqis from Other Countries

Syria	1,243
Jordan	77
Lebanon	47
Palestine	47
Egypt	32
Iran	20
Sudan	16
Morocco	13
Saudi Arabia	13
Algeria	7
Others	43
Total	1,558

Note: Others are from countries apart from the top ten.

Registration in 2011				
	New Registration		Reactivation/ Reopened	
	Month	Cumulative	Month	Cumulative
Iraqis	1,323	7,111	189	1,190
Non-Iraqis	168	722	35	79
Total	1,491	7,833	224	1,269

Resettlement in 2011				
	Submissions		Departures	
	Month	Cumulative	Month	Cumulative
Iraqis	1,226	5,268	38	1,372
Non-Iraqis	47	145	1	55
Total	1,273	5,413	39	1,427

*Some non-Iraqis are dependents of Iraqis so are resettled with Iraqi cases.

Inactivation & Other Decreases in 2011				
	Inactivation (no contact)		Other Closures	
	Month	Cumulative	Month	Cumulative
Iraqis	66	308	57	1,476
Non-Iraqis	14	113	28	88
Total	80	421	85	1,564

Repatriation & Other Departures in 2011				
	Voluntary Repatriation Assisted		Own Departure	
	Month	Cumulative	Month	Cumulative
Iraqis	34	112	251	794
Non-Iraqis	-	-	2	11
Total	34	112	253	805

Registered Iraqi Population Trends

	Beginning of year/ month	End of year/ month	Increases		Decreases					Adjustments (due to retro-active data entry)
			New Registration	Reactivated/ Reopened	Resettlement Departure	Voluntary Repatriation Assisted	Own Departure (Return/3rd Country)	Inactivated (No Contact)	Other Closures (Death, Withdrawal)	
2007	40,858	152,861	114,387	1,303	605	-	0	753	2,329	
2008	152,861	223,584	81,764	1,210	7,405	673	12	3,660	501	
2009	223,584	161,001	35,436	2,052	10,167	607	6	87,135	2,156	
2010	161,001	136,354	23,108	3,902	6,858	175	1,350	40,634	2,824	184
2011										
January	136,354	137,859	2,102	376	700	26	158	63	180	154
February	137,859	139,153	1,853	280	364	36	156	83	716	516
March	139,153	140,633	1,833	345	270	16	229	96	523	436
April	140,633	141,157	1,323	189	38	34	251	66	57	(542)
May	141,157									
June										
July										
August										
September										
October										
November										
December										
Sub Total			7,111	1,190	1,372	112	794	308	1,476	564

Demography, place of origin and specific protection/assistance needs of the Currently Active Iraqis

Individuals		Age	0-4	5-11	12-17	18-59	60+
Female	66,504	Female	5,663	10,065	8,827	36,890	5,059
Male	74,653	Male	5,974	10,675	9,303	43,608	5,093
Total	141,157	Total	11,637	20,740	18,130	80,498	10,152
			8.2%	14.7%	12.8%	57.0%	7.2%

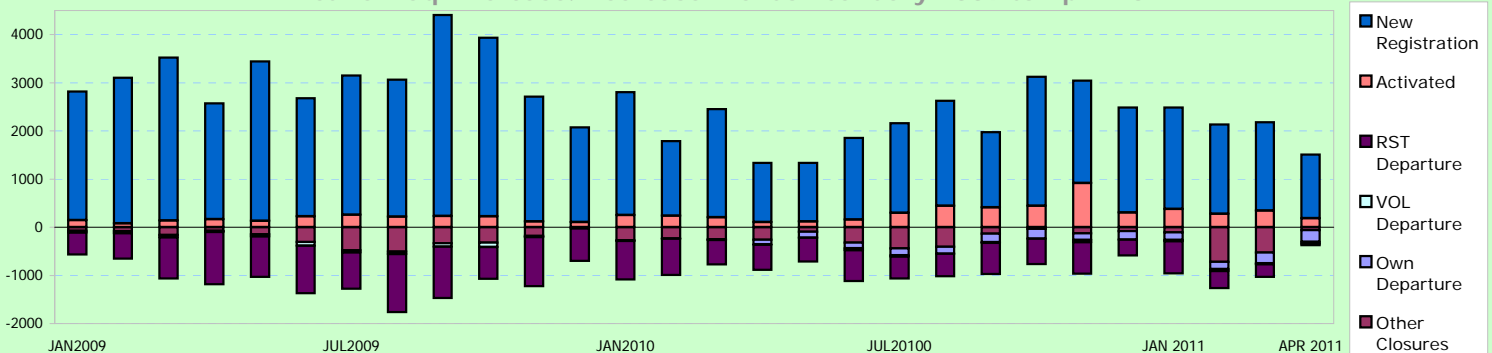
Cases		Avg. case size	2.8	Avg. case size excluding single person cases	4.1
Cases	51,646				
Female-Headed	14,425	27.9%			

Governorate of Origin		Ethnic Origin		Religious Background	
Anbar	6,201	Arab	122,952	Christianity	15,893
Babylon	1,412	Armenian	961	Islam (Shiah)	27,108
Baghdad	90,931	Assyrian	4,323	Islam (Sunni)	87,164
Diyala	3,842	Chaldean	8,216	Islam (unspecified)	4,703
Kerbala	1,713	Kurd	2,441	Sabeen/Mandean	5,129
Najaf	1,392	Turkmen	528	Yezidis	789
Salah al-Din	2,374	Others, n/a	1,736	Others, n/a	371
Wassit	624				
Ninewa	15,121				
Tameem	1,261				
Dahuk	296				
Erbil	144				
Sulaymaniyah	117				
Basrah	7,004				
Missan	472				
Muthanna	477				
Qadissiya	695				
Thi-Qar	1,498				
n/a	5,583				

Year of Arrival		Specific Needs	% of the total active Iraqis
Pre-2006	26,441	Critical medical condition	31,046
2006	38,525	Persons with disabilities	4,056
2007	27,301	Woman at risk	8,173
2008	12,001	Single parent	694
2009	15,209	Child or adolescent at risk	4,808
2010	18,499	Unaccompanied or separated child	378
2011	3,181	Family unity	2,806
		Older person at risk	3,753
		Special legal and protection needs	10,630
		Survivor of torture	16,952

Refugees	139,981	Others	467	Non-Iraqi Dependents	1,558
Asylum Seekers	709				

Active Iraqi Increase/Decrease Trends - January 2009 to April 2011



	All Registered	Refugees	Asylum Seekers	Total Refugees & Asylum Seekers	Others
Iraqis	6,838	6,083	749	6,832	6
Non-Iraqis	11,568	5,430	6,098	11,528	40
Totals	18,406	11,513	6,847	18,360	46

Summary in 2011

Country of Origin and Status of Active Caseload

Country of Origin	Total	% of Total	Refugees	Asylum Seekers	Total Refugees & Asylum Seekers	Others
Iraq	6,838	37.2%	6,083	749	6,832	6
Iran	4,922	26.7%	2,242	2,657	4,899	23
Afghanistan	3,489	19.0%	1,714	1,761	3,475	14
Somalia	1,360	7.4%	1,017	343	1,360	-
Kyrgyzstan	324	1.8%	-	324	324	-
Sudan	214	1.2%	141	72	213	1
Uzbekistan	192	1.0%	47	145	192	-
Palestine	157	0.9%	66	91	157	-
Syria	116	0.6%	20	96	116	-
Eritrea	94	0.5%	56	38	94	-
Others	700	3.8%	127	571	698	2
Total	18,406	100.0%	11,513	6,847	18,360	46

Dependents of Iraqis from Other Countries

Syria	4
Iran	3
Afghanistan	2
Palestine	2
Somalia	1
Morocco	1
Lebanon	1
Egypt	1
Tunisia	1
Jordan	1
Total	17

Note: Others are from countries apart from the top ten.

Registration in 2011				
	New Registration		Reactivation/ Reopened	
	Month	Cumulative	Month	Cumulative
Iraqis	362	1,746	4	36
Non-Iraqis	352	1,623	22	155
Total	714	3,369	26	191

Resettlement in 2011				
	Submissions		Departures	
	Month	Cumulative	Month	Cumulative
Iraqis	375	1,537	54	517
Non-Iraqis	164	833	82	384
Total	539	2,370	136	901

*Some non-Iraqis are dependents of Iraqis so are resettled with Iraqi cases.

Inactivation & Other Decreases in 2011				
	Inactivation (no contact)		Other Closures	
	Month	Cumulative	Month	Cumulative
Iraqis	-	1	22	68
Non-Iraqis	-	56	106	580
Total	-	57	128	648

Repatriation & Other Departures in 2011				
	Voluntary Repatriation Assisted		Own Departure	
	Month	Cumulative	Month	Cumulative
Iraqis	-	-	73	199
Non-Iraqis	-	-	18	64
Total	-	-	91	263

Registered Iraqi Population Trends

	Beginning of year/ month	End of year/ month	Increases		Decreases					Adjustments (due to retro-active data entry)
			New Registration	Reactivated/ Reopened	Resettlement Departure	Voluntary Repatriation Assisted	Own Departure (Return/3rd Country)	Inactivated (No Contact)	Other Closures (Death, Withdrawal)	
2007	2,625	4,660	3,486	138	980	-	445	8	156	
2008	4,660	8,274	6,900	74	2,414	-	438	3	505	
2009	8,274	6,805	3,763	73	4,183	7	526	23	566	
2010	6,805	5,876	3,657	92	3,564	-	741	38	314	(21)
2011										
January	5,876	6,223	526	12	116	-	44	1	19	(11)
February	6,223	6,374	419	12	224	-	33	-	11	(12)
March	6,374	6,591	439	8	123	-	73	-	22	(12)
April	6,591	6,838	362	4	54	-	49	-	16	-
May	6,838									
June										
July										
August										
September										
October										
November										
December										
Sub Total			1,746	36	517	-	199	1	68	(35)

Demography, place of origin and specific protection/assistance needs of the Currently Active Iraqis

Individuals		
Female	2,856	41.8%
Male	3,982	58.2%
Total	6,838	

Age	0-4	5-11	12-17	18-59	60+
Female	309	415	308	1,697	127
Male	358	519	374	2,602	129
Total	667	934	682	4,299	256
	9.8%	13.7%	10.0%	62.9%	3.7%

Cases		
Cases	3,274	
Female-Headed	675	20.6%

Avg. case size 2.1

Avg. case size excluding single person cases 3.7

Governorate of Origin		
Anbar	11	0.2%
Babylon	25	0.4%
Baghdad	3,290	53.0%
Diyala	54	0.9%
Kerbala	44	0.7%
Najaf	14	0.2%
Salah al-Din	43	0.7%
Wassit	10	0.2%
Ninewa	1,580	25.4%
Tameem	875	14.1%
Dahuk	40	0.6%
Erbil	40	0.6%
Sulaymaniyah	57	0.9%
Basrah	80	1.3%
Missan	12	0.2%
Muthanna	10	0.2%
Qadissiya	7	0.1%
Thi-Qar	18	0.3%
n/a	628	

% of the total place of origin with address specified

Ethnic Origin		
Arab	2,365	34.6%
Armenian	151	2.2%
Assyrian	873	12.8%
Chaldean	2,138	31.3%
Kurd	409	6.0%
Turkmen	883	12.9%
Others, n/a	19	0.3%

Year of Arrival		
Pre-2006	406	5.9%
2006	245	3.6%
2007	449	6.6%
2008	579	8.5%
2009	591	8.6%
2010	3,253	47.6%
2011	1,315	19.2%

Religious Background		
Christianity	3,233	47.3%
Islam (Shiah)	658	9.6%
Islam (Sunni)	2,045	29.9%
Islam (unspecified)	813	11.9%
Sabeen/Mandean	18	0.3%
Yezidis	28	0.4%
Others, n/a	43	0.6%

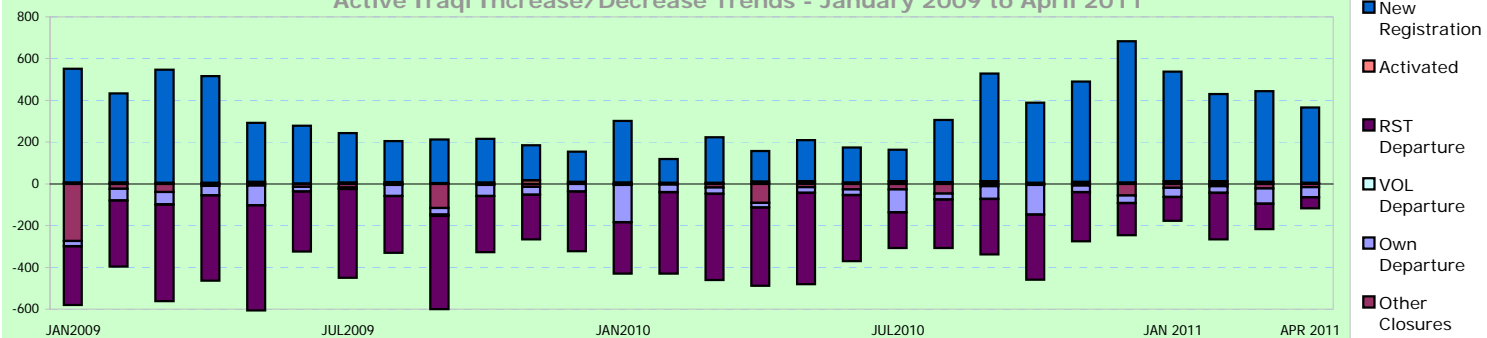
Specific Needs		% of the total active Iraqis
Critical medical condition	248	3.6%
Persons with disabilities	87	1.3%
Woman at risk	76	1.1%
Single parent	19	0.3%
Child or adolescent at risk	-	0.0%
Unaccompanied or separated child	19	0.3%
Family unity	1	0.0%
Older person at risk	67	1.0%
Special legal and protection needs	31	0.5%
Survivor of torture	2	0.0%
Individuals with Specific Needs:	524	7.7%

Refugees	6,083
Asylum Seekers	749

Others	6
--------	---

Non-Iraqi Dependents	17
----------------------	----

Active Iraqi Increase/Decrease Trends - January 2009 to April 2011



	All Registered	Refugees	Asylum Seekers	Total Refugees & Asylum Seekers	Others
Iraqis	1,864	895	968	1,863	1
Non-Iraqis	1,307	749	535	1,284	23
Totals	3,171	1,644	1,503	3,147	24

Summary in 2011

Country of Origin and Status of Active Caseload

Country of Origin	Total	% of Total	Refugees	Asylum Seekers	Total Refugees & Asylum Seekers	Others
Iraq	1,864	58.8%	895	968	1,863	1
Eritrea	380	12.0%	377	3	380	-
Somalia	211	6.7%	64	146	210	1
Iran	161	5.1%	50	111	161	-
Afghanistan	117	3.7%	4	113	117	-
Syria	110	3.5%	71	39	110	-
Sudan	87	2.7%	51	36	87	-
Palestine	56	1.8%	39	17	56	-
Liberia	27	0.9%	27	-	27	-
Ethiopia	19	0.6%	9	10	19	-
Others	139	4.4%	57	60	117	22
Total	3,171	100.0%	1,644	1,503	3,147	24

Dependents of Iraqis from Other Countries

Kuwait	18
Jordan	9
Syria	8
Bahrain	4
Lebanon	3
Sri Lanka	2
Stateless	2
UAE	2
Philippines	1
Palestine	1
Others	2
Total	52

Note: Others are from countries apart from the top ten.

Registration in 2011

	New Registration		Reactivation/ Reopened	
	Month	Cumulative	Month	Cumulative
Iraqis	32	204	-	6
Non-Iraqis	8	34	-	8
Total	40	238	-	14

Resettlement in 2011

	Submissions		Departures	
	Month	Cumulative	Month	Cumulative
Iraqis	12	62	2	23
Non-Iraqis	11	23	-	3
Total	23	85	2	26

*Some non-Iraqis are dependents of Iraqis so are resettled with Iraqi cases.

Inactivation & Other Decreases in 2011

	Inactivation (no contact)		Other Closures	
	Month	Cumulative	Month	Cumulative
Iraqis	-	1	-	1
Non-Iraqis	-	7	-	11
Total	-	8	-	12

Repatriation & Other Departures in 2011

	Voluntary Repatriation Assisted		Own Departure	
	Month	Cumulative	Month	Cumulative
Iraqis	-	-	-	12
Non-Iraqis	-	-	-	1
Total	-	-	-	13

Registered Iraqi Population Trends

Bahrain: 251, Kuwait: 886, Oman: 94, Qatar: 72, UAE: 501, Saudi Arabia: 60

	Beginning of year/ month	End of year/ month	Increases		Decreases					Adjustments (due to retro-active data entry)
			New Registration	Reactivated/ Reopened	Resettlement Departure	Voluntary Repatriation Assisted	Own Departure (Return/3rd Country)	Inactivated (No Contact)	Other Closures (Death, Withdrawal)	
2007	192	597	455	-	-	-	-	-	20	
2008	597	899	382	1	25	-	1	2	43	
2009	899	1,116	378	42	39	-	67	-	96	
2010	1,116	1,694	744	24	163	-	17	-	22	12
2011										
January	1,694	1,772	84	-	-	-	-	1	-	-
February	1,772	1,790	37	6	12	-	6	-	-	-
March	1,790	1,810	51	-	9	-	6	-	1	-
April	1,810	1,864	32	-	2	-	0	-	-	-
May	1,864									
June										
July										
August										
September										
October										
November										
December										
Sub Total			204	6	23	-	12	1	1	-

Demography, place of origin and specific protection/assistance needs of the Currently Active Iraqis

Individuals	
Female	893 47.9%
Male	971 52.1%
Total	1,864

Age	0-4	5-11	12-17	18-59	60+
Female	89	113	78	556	57
Male	76	128	95	612	60
Total	165	241	173	1,168	117
	8.9%	12.9%	9.3%	62.7%	6.3%

Cases	
Cases	657
Female-Headed	121 18.4%

Avg. case size 2.9

Avg. case size excluding single person cases 4.1

Governorate of Origin	
Anbar	6 0.7%
Babylon	8 0.9%
Baghdad	549 59.9%
Diyala	4 0.4%
Kerbala	9 1.0%
Najaf	4 0.4%
Salah al-Din	6 0.7%
Wassit	6 0.7%
Ninewa	9 1.0%
Tameem	- 0.0%
Dahuk	- 0.0%
Erbil	- 0.0%
Sulaymaniyah	- 0.0%
Basrah	299 32.6%
Missan	1 0.1%
Muthanna	- 0.0%
Qadissiya	- 0.0%
Thi-Qar	16 1.7%
n/a	947

Ethnic Origin	
Arab	1,649 88.5%
Armenian	8 0.4%
Assyrian	3 0.2%
Chaldean	4 0.2%
Kurd	38 2.0%
Turkmen	2 0.1%
Others, n/a	160 8.6%

Religious Background	
Christianity	64 3.4%
Islam (Shiah)	337 18.1%
Islam (Sunni)	755 40.5%
Islam (unspecified)	575 30.8%
Sabeen/Mandean	2 0.1%
Yezidis	- 0.0%
Others, n/a	131 7.0%

Year of Arrival	
Pre-2006	861 46.2%
2006	433 23.2%
2007	294 15.8%
2008	166 8.9%
2009	61 3.3%
2010	44 2.4%
2011	5 0.3%

Specific Needs	% of the total active Iraqis
Critical medical condition	25 1.3%
Persons with disabilities	13 0.7%
Woman at risk	2 0.1%
Single parent	- 0.0%
Child or adolescent at risk	2 0.1%
Unaccompanied or separated child	- 0.0%
Family unity	- 0.0%
Older person at risk	- 0.0%
Special legal and protection needs	26 1.4%
Survivor of torture	1 0.1%
Individuals with Specific Needs:	64 3.4%

% of the total place of origin with address specified

Refugees	895
Asylum Seekers	968

Others	1
--------	---

Non-Iraqi Dependents	52
----------------------	----

Active Iraqi Increase/Decrease Trends - January 2009 to April 2011

