



**Food Security and Nutrition
Analysis Unit Somalia**

Information for Better Livelihoods



Post Deyr'11/12

Presentation

January 24th, 2012



Integrated Nutrition Situation Analysis

Northwest - Somaliland



EUROPEAN COMMISSION



Main Livelihood Zones

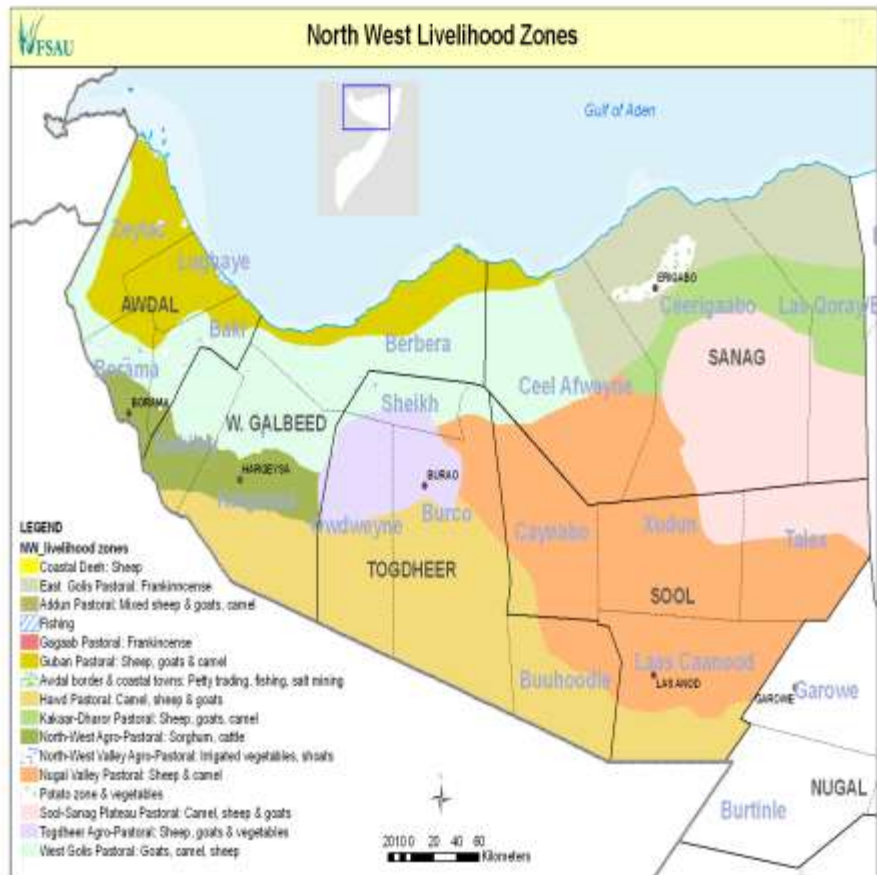
Livelihood Groups & Main Sources of Food and Income

4 Pastoral Livelihoods (*Hawd, Sool Plateau, Nugaal Valley, and Golis/Guban Pastoralists*)

- ❑ Primary sources of income of poor: sale of livestock & livestock products
- ❑ Primary sources of food of poor: purchase and own production
- ❑ Primary livelihood asset of poor: camel, sheep/goat

Agro-pastoral Livelihoods (*Togdheer and Northwest Agro-pastoral*)

- ❑ **Togdheer Agro-Pastoral** are more pastoral, however there is an increasing dependency on crop and fodder production. Main sources of income: sale of livestock & livestock products, self-employment and fodder sales.
- ❑ **Main source of food:** Own crop and food purchase
- ❑ **Northwest Agro-pastoral** are more agriculturists than pastoralists. Main sources of income: sale of crops, livestock products and labour;
- ❑ **Main sources of food:** own crop production and purchase.

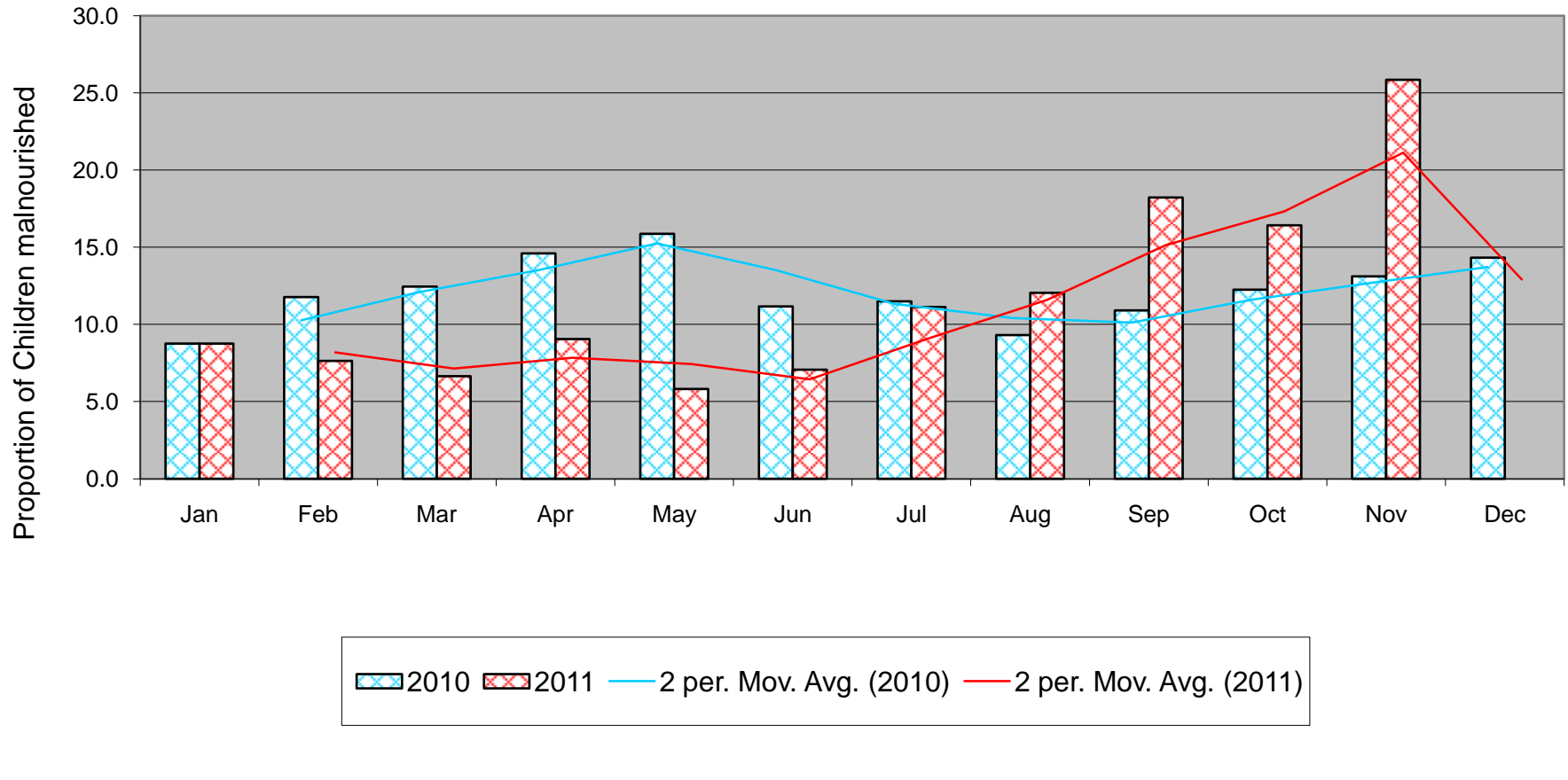


WEST GOLIS/GUBAN Livelihood Zone, Summary of Findings

Outcome indicators	Deyr '10/11 N=628 December 2010	Gu '11 N=844 July 2011	Deyr'11/12 N=819 December 2011
Child Nutrition status			
○ <i>GAM (WHZ<-2 or oedema)</i>	10.4 (7.6-13.9)	22.0 (18.9-25.4)	13.8 (11.4-16.6)
○ <i>SAM (WHZ<-3 or oedema)</i>	1.6 (0.9-2.9)	5.0 (3.4-7.0)	2.2 (1.4-3.5)
○ <i>Oedema</i>	0.3	0.1	0.1
○ <i>Mean Weight-for Height Z (WHZ scores)</i>	0.51±1.10	-1.12± 1.12	-0.72±1.21
○ <i>MUAC (<12.5 cm or oedema)</i>	4.1 (2.4-7.2)	7.0 (4.2-11.3)	4.9 (3.4-6.9)
○ <i>Severe MUAC (<11.5cm)</i>	0.5 (0.2-1.5)	2.3 (0.9-5.3)	0.5 (0.2-1.3)
○ <i>HIS Nutrition Trends</i>	Low<5% and stable	High (>15%) and fluctuating	High (>15%) and fluctuating
○ <i>TFPs/SFPs Admission trends</i>		High and fluctuating	High and decreasing
Crude death Rate/10,000/day (90days)	0.82 (0.56-1.18)	0.77 (0.43-1.37)	0.54 (0.33-0.89)
Under 5 death Rate/10,000/day (90days)	0.90 (0.36-2.26)	0.91(0.39-2.09)	0.27 (0.06-1.13)
Non-pregnant women with MUAC <18.5 cm	0.3	0.9 (0.0-1.9)	0.7(0.1-2.4)
Pregnant & Lactating women with MUAC<21.0 cm	-	6.8 (2.8-10.7)	0.4 (0.0-2.4)
Pregnant & Lactating women with MUAC<23.0 cm	9.4	17.8 (11.6-24.0)	16.5 (11.9-21.9)
OVERALL NUTRITION SITUATION	Serious	Very Critical	Serious
Child Morbidity, Immunization, IYCF			
○ <i>Disease Outbreaks:</i>	No outbreaks	No Outbreak	No outbreak
○ <i>Morbidity based on 2wk recall</i>	Overall morbidity,26.1; Diarrhoea- 12.4; Pneumonia- 8.8	Overall morbidity,24.9; Diarrhea,15.6; Pnuamonia,3.8; Fever,10.5; measles,1.5	Overall morbidity:29.7 Diarrhea:18.2 Pneumonia:3.7 measles:1.1 Fever:19.7
○ <i>Immunization status/Vit. A</i>	Vit A- 68.8 Measles Vac- 67.5	Vit.A:50.2; Measles vac:81.3; Polio:94.5	Vit A: 63.2 Polio:82.7 Measles Vac:65.1
○ <i>Children eating from <4 fdgps</i>	86.8	94.8	98
○ <i>Children meeting min. feeding freq.</i>	47.6	56.0	35.8
Public Health Indicators; Gender	N=403	N=627	N=509
○ <i>Households (HH) accessing safe water</i>	48.3	49.5	63.2
○ <i>HH accessing sanitation facilities</i>	23.8	31.1	43.2
○ <i>Relation between GAM & child sex</i>	Insignificant	Insignificant	Insignificant
○ <i>Relation between GAM & sex of hh head</i>	Insignificant	insignificant	insignificant
<i>Proportion of hh consuming <4 fd gps</i>	17.5	4.0	58.7
Food Security Phase	BFI/Stressed	BFI/Stressed	BFI/Stressed
Overall Risk to Deterioration	STABLE	POTENTIAL TO IMPROVE	STABLE

Malnutrition Trends at Health Facilities

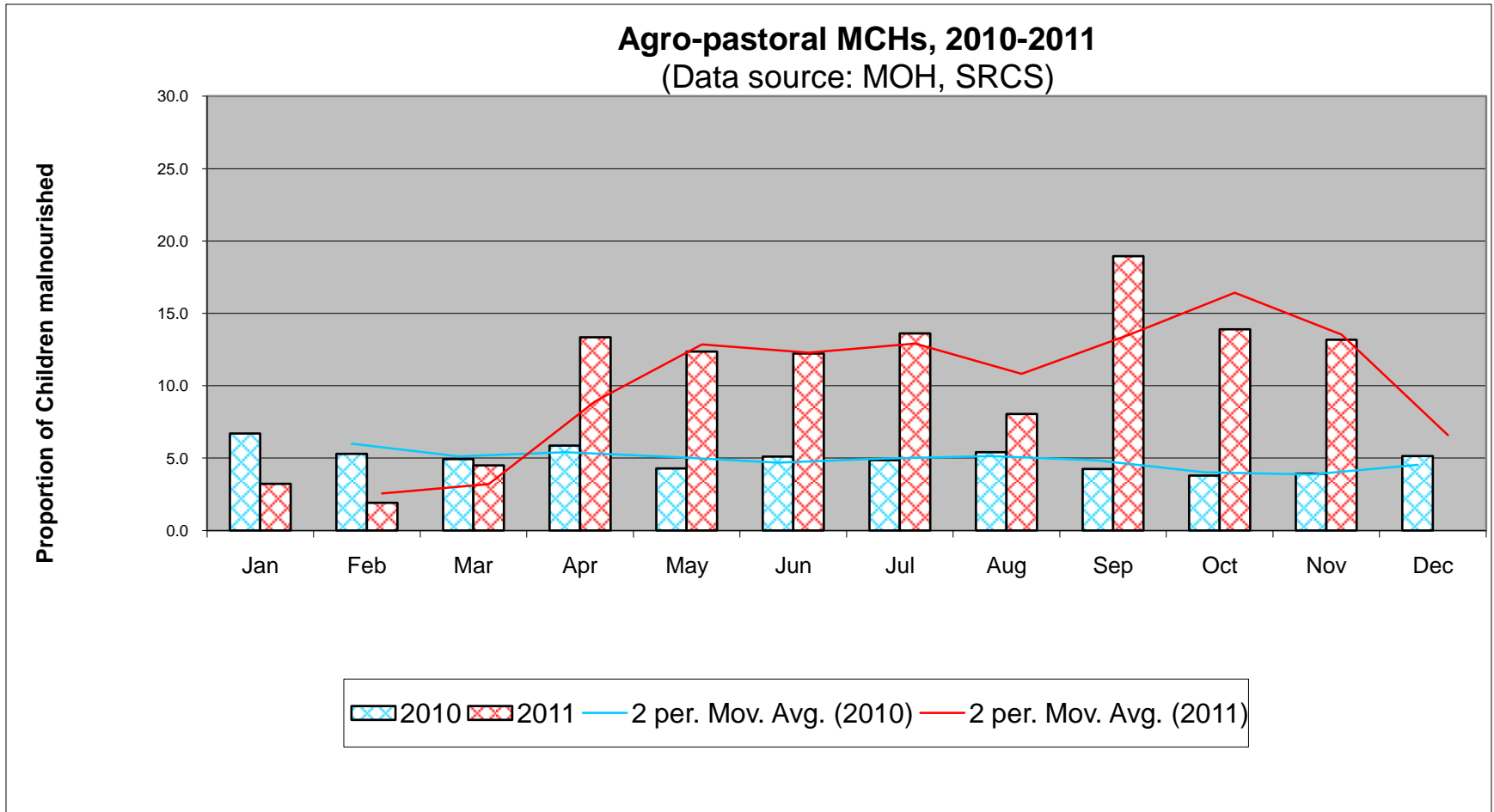
West Golis, MCHs, 2010 – 2011
(Data source: MOH, SRCS)



High (>15%) and increasing trend

Outcome indicators	Deyr '10/11 N= 520 December 2010	Gu '11 N= 684 July 2011	Deyr '11/12 N=661 December 2011
Child Nutrition status			
o <i>GAM (WHZ<-2 or oedema)</i>	10.4 (7.6-14.1)	11.9 (8.5-15.4)	10.1(7.1-14.1)
o <i>SAM (WHZ<-3 or oedema)</i>	0.8 (0.3-1.9)	0.6 (0.3-1.9)	2.6 (1.4-4.9)
o <i>Mean Weight-for-height Z (WHZ)</i>	-0.61±1.17	-0.56±1.13	-0.66±1.11
o <i>Oedema</i>	0	0	0
o <i>MUAC (<12.5 cm or oedema)</i>	1.5 (0.6-2.5)	3.1(1.6-5.9)	4.4 (2.7-7.0)
o <i>Severe MUAC (<11.5 cm)</i>	0.4 (0-0.9)	0.9 (0.3–2.7)	0.5 (0.1-1.4)
o <i>HIS Nutrition Trends</i>	Low(<5% and stable	Low (<10%) and decreasing	High (>10%) and decreasing
Crude death Rate/10,000/day (90days)	0.16 (0.05 –0.55)	0.23 (0.12-0.45)	0.05 (0.0-0.1)
Under 5 death Rate/10,000/day (90days)	0.41(0.10 –1.62)	0.53 (0.21-1.38)	0.28 (0.15-0.53)
Non-pregnant women with MUAC <18.5 cm	2.0	0.5 (0.0-1.5)	1.0 (0.0-2.5)
Pregnant & Lactating women with MUAC<21.0 cm	--	2.8 (0.5-5.1)	5.9 (0.0-15.1)
Pregnant & Lactating women with MUAC<23.0 cm	9.4	6.3 (2.9-9.6)	22.3 (2.9-41.8)
OVERALL NUTRITION SITUATION	Serious	Serious	Serious
Child Morbidity, Immunization, IYCF			
o <i>Disease Outbreaks:</i> o <i>Morbidity based on 2wk recall</i>	No outbreaks Overall morbidity,28.7 ; Diarrhoea – 8.8; Pneumonia- 7.6	No outbreak: Overall morbidity, 19.3; Diarrhea- 9.6; Pneumonia, 4.7	No outbreak: Overall morbidity,24.6; Diarrhea- 10.6; Pneumonia, 11.7 ;Measles, 1.4
o <i>Immunization status/Vit. A</i>	Vit A- 64.5 Measles Vac- 66.5	Vit-A 64.6, Measles Vac. 71.1	Vit-A, 52; Measles Vac.45.5
o <i>Children eating from <4 fdgps</i>	93	98.8	96.2
o <i>Children meeting min. feeding freq.</i>	32.1	50.0	41.9
Public Health Indicators; Gender	N=430	N=517	N=388
o <i>Households (HH) accessing safe water</i>	18.0	7.7	8.2
o <i>HH accessing sanitation facilities</i>	24.8	22.1	25.5
o <i>Relation between GAM & child sex</i>	Insignificant	Insignificant	Insignificant
o <i>Relation between GAM & sex of hh head</i>	Insignificant	Insignificant	Insignificant
<i>Proportion of hh consuming <4 fd gps</i>	81.5	98.8	83.8
Food Security Phase	BFI/Stressed	BFI/Stressed	BFI/Stressed
Overall Risk to Deterioration	STABLE	STABLE	STABLE

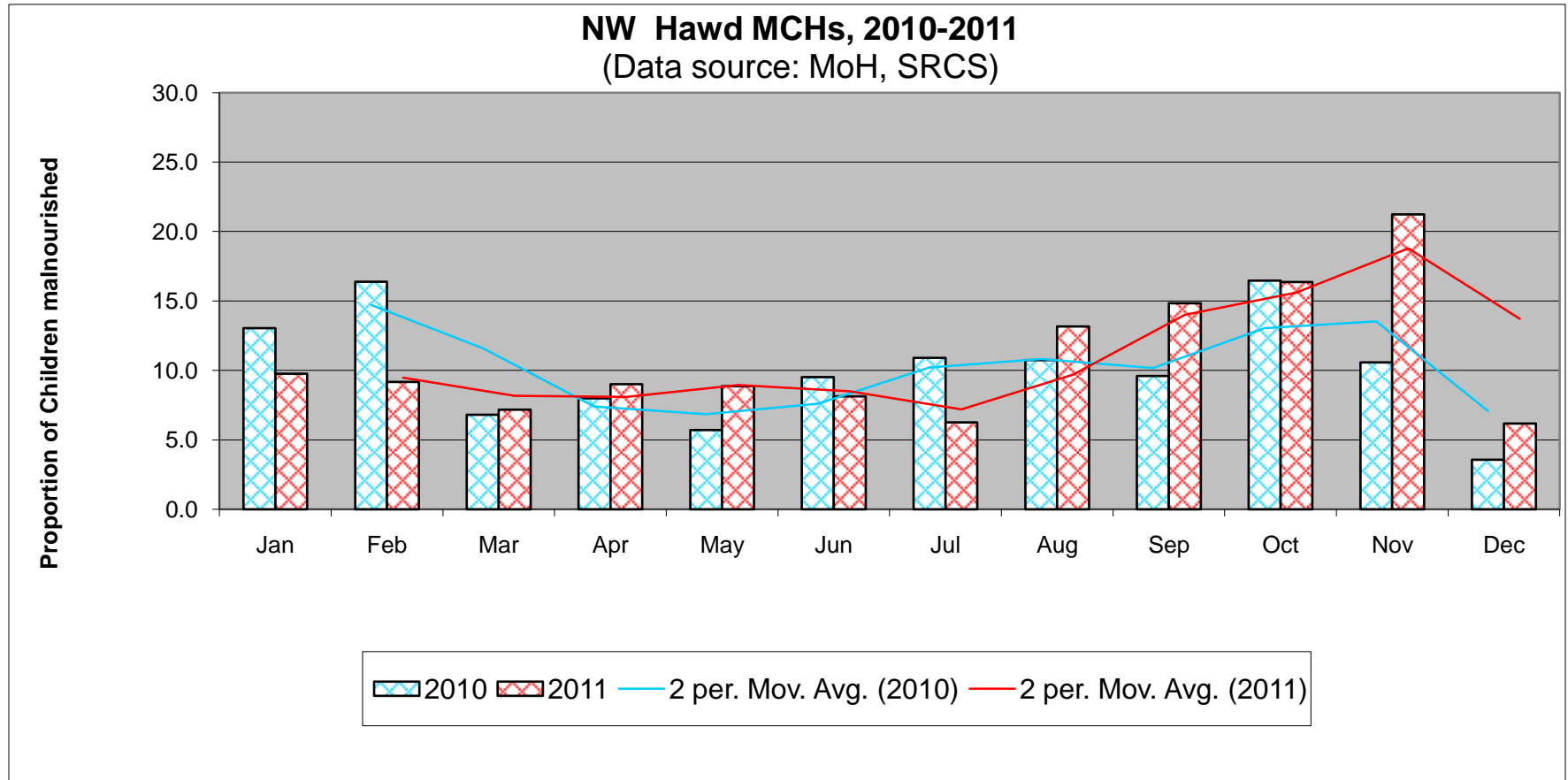
Malnutrition Trends at Health Facilities



High (>10%) and decreasing trend

Outcome indicators	HAWD Livelihood Zone, Summary of Findings		
	Deyr '10/11 N=655 December 2010	GU'011 N=614 July 2011	Deyr '11 /12 N=448 December 2011
Child Nutrition status			
○ GAM (WHZ<-2 or oedema)	10.1(8.0-12.7)	6.2 (4.3-8.8)	10.7 (8.4-13.6)
○ SAM (WHZ<-3 or oedema)	1.8(1.0-3.5)	0.3 (0.1- 1.4)	1.8 (0.9-3.6)
○ Mean Weight-for Height Z (WHZ scores)	-0.58±1.09	0.4±1.18	-0.46±1.15
○ Oedema	0.3	0.3	0.2
○ MUAC (<12.5 cm or oedema)	3.1 (1.9-4.8)	6.0 (3.4 –10.3)	5.3 (3.0-9.4)
○ HIS Nutrition Trends	Low (<10%) and stable trends	Low (<10%)and fluctuating	High (>15%) and fluctuating
○ TFPs/SFPs Admission trends	N/A	Low and increasing numbers	Low and fluctuating numbers
Crude death Rate/10,000/day (90days)	0.30 (0.14-0.62)	0.35 (0.19-0.62)	0.78 (0.50-1.21)
Under 5 death Rate/10,000/day (90days)	0.63 (0.21-1.92)	1.22 (0.60-2.44)	0.19 (0.02-1.50)
Non-pregnant women with MUAC <18.5 cm	0.4	0	0
Pregnant & Lactating women with MUAC<21.0 cm	-	0	5.9(0.0-15.1)
Pregnant & Lactating women with MUAC<23.0 cm	23.8	2.7(0.1-5.2)	10.1(4.3-15.8)
OVERALL NUTRITION SITUATION	Serious	Alert	Serious
Child Morbidity, Immunization, IYCF			
○ Disease Outbreaks: ○ Morbidity based on 2wk recall	No Outbreaks Overall morbidity,21.1; Diarrhoea – 6.6; Pneumonia- 7.0	No outbreak Overall morbidity,30.3; Diarrhea- 16.7; Pneumonia,9.9	No outbreak Overall morbidity,28.1 Diarrhea: 18.4 Pneumonia= 6.2, Measles, 3.1
○ Immunization status/Vit. A	Vit A- 63.1 Measles Vac-62	Vit. A, 74.2; Measles Vac. 70.4	Vit-A, 63.3; Measles Vac,70.4
○ Children eating from <4 fdgps	50.7	88.8	97.1
○ Children meeting min. feeding freq.	65.2	42.5	54.9
Public Health Indictors; Gender	N= 405	N=404	N=300
○ Households (HH) accessing safe water	3.2	0	4.0
○ HH accessing sanitation facilities	45.9	27.0	42.3
○ Relation between GAM & child sex	Insignificant	Insignificant	Insignificant
○ Relation between GAM & sex of hh head	Insignificant	Insignificant	Insignificant
Proportion of hh consuming <4 fd gps	4.9	4.0	16.2
Food Security Phase	BFI/Stressed	BFI/Stressed	BFI/Stressed-Hargeisa AFLC/ Crisis–Togdheer, Sool
Overall Risk to Deterioration	POTENTIAL TO	STABLE	STABLE

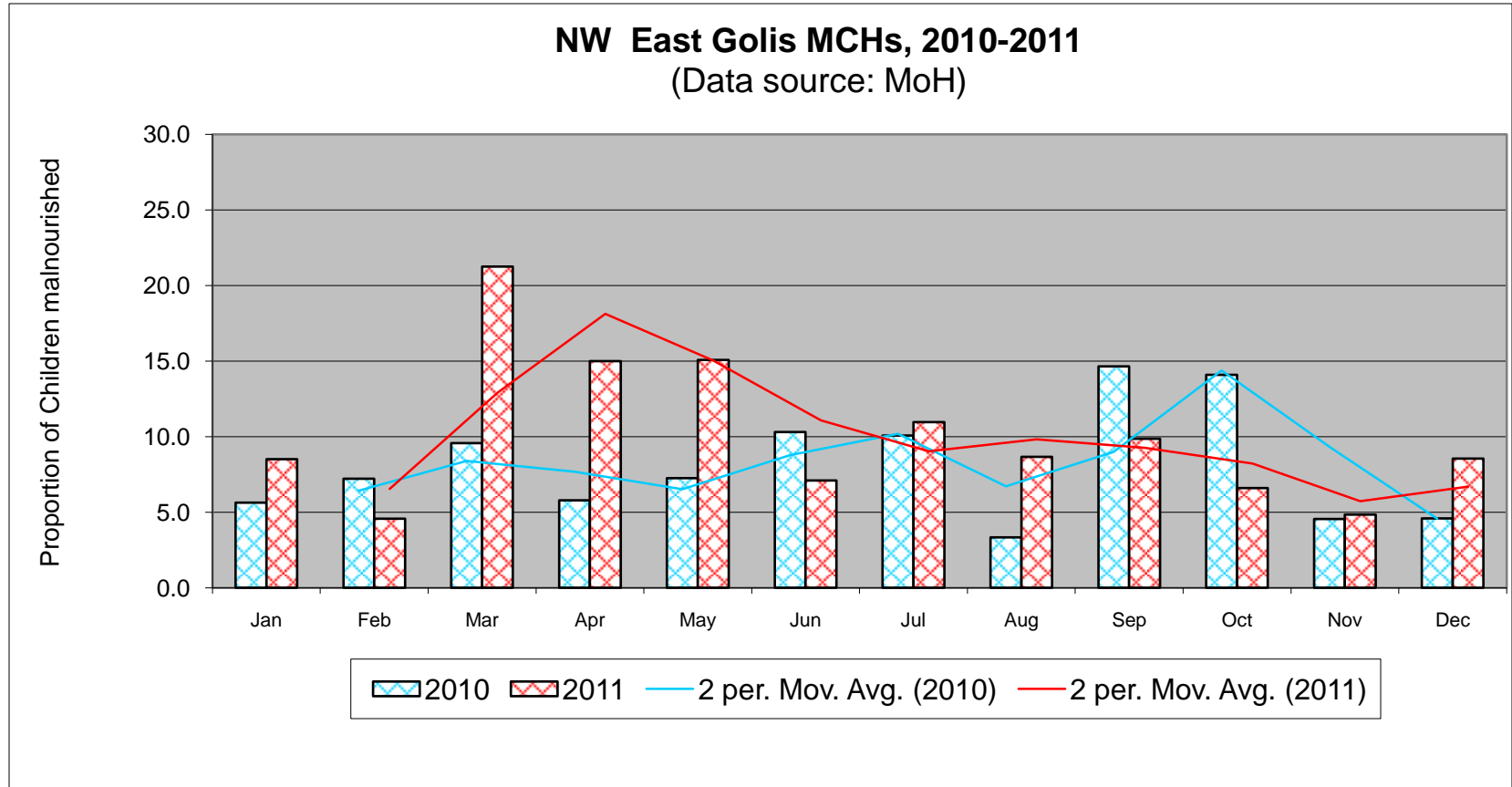
Malnutrition Trends at Health Facilities



High (>15%) and fluctuating trend

	EAST GOLIS/GEBBI VALLEY Livelihood Zone, Summary of Findings		
Outcome indicators	Deyr '10/11 N = 659 December 2010	Gu'11 N=727 July 2011	Deyr'11/12 N=476 December 2011
Child Nutrition status			
o GAM (WHZ<-2 or oedema)	11.1(8.0-15.1)	12.2(8.5-16.9)	10.5 (7.4-14.7)
o SAM (WHZ<-3 or oedema)	2.1 (1.2-3.9)	1.1(0.0-2.7)	0.8 (0.3-2.8)
o Mean Weight-for height WHZ score	-0.53±1.16	-0.81±1.03	0.57±1.15
o Oedema	0.3	0.4	0
o MUAC (<12.5 cm or oedema)	5.8 (3.8-8.6)	5.5 (3.9-7.0)	6.7 (3.5-12.7)
o Severe MUAC (<11.5 cm)	0.3 (0.0-2.4)	1.2 (0.5-1.9)	1.9 (0.8-4.2)
o HIS Nutrition Trends	High 10-15% and fluctuating	High (>10%) and decreasing	Low (<10%) and fluctuating
o TFPs/SFPs Admission trends	Low and decreasing in Badhan	High and decreasing numbers	Low and decreasing numbers
Crude death Rate/10,000/day (90days)	0.13 (0.05-0.33)	0.98 (0.54-1.77)	0.59 (0.27-1.27)
Under 5 death Rate/10,000/day (90days)	0.30 (0.07-1.20)	1.44 (0.79-2.61)	0.75 (0.28-2.00)
Non-pregnant women with MUAC <18.5 cm	0.5	0	0.5 (0.0-1.4)
Pregnant & Lactating women with MUAC<21.0 cm	-	2.4 (0.0-5.3)	9.0 (0.0-20.6)
Pregnant & Lactating women with MUAC<23.0 cm	21.7	23.5 (13.8-33.2)	21.0 (3.5-38.5)
OVERALL NUTRITION SITUATION	Serious	Serious	Serious
Child Morbidity, Immunization, IYCF			
o Disease Outbreaks: o Morbidity based on 2wk recall	No outbreaks 43.1; Diarrhoea- 17.8; Pneumonia 21.4	Measles out break reported: Morbidity, 41.2; Diarrhoea 16.6; Measles, 7.0	No outbreak. Morbidity, 16.7; Diarrhea:9.2 Pneumonia:4.6 Fever:6.3; Measles:2.1
o Immunization status/Vit. A	Vit A- 80.9; Measles Vac - 77.1	Vitamin A; 77.7; Measles Vac 81.8	VitA:59.0; Measles vac:57.4 Polio:77
o Children eating from <4 fdgps	98	95.8	100
o Children meeting min. feeding freq.	35.0	23.3	54.2
Public Health Indicators; Gender	N= 420	N=536	N=306
o Households (HH) accessing safe water	49.8	15.2	20.9
o HH accessing sanitation facilities	61.7	68.2	18.0
o Relation between GAM & child sex	Insignificant	Insignificant	Insignificant
o Relation between GAM & sex of hh head	Insignificant	Insignificant	Insignificant
Proportion of hh consuming <4 fd gps	6.7	36.4	12.7
Food Security Phase	BFI/Stressed	AFLC/ Crisis	AFLC/ Crisis
Overall Risk to Deterioration	POTENTIAL TO DETERIORATE	POTENTIAL TO DETERIORATE	STABLE

Malnutrition Trends at Health Facilities



Low (<10%) and stable trend

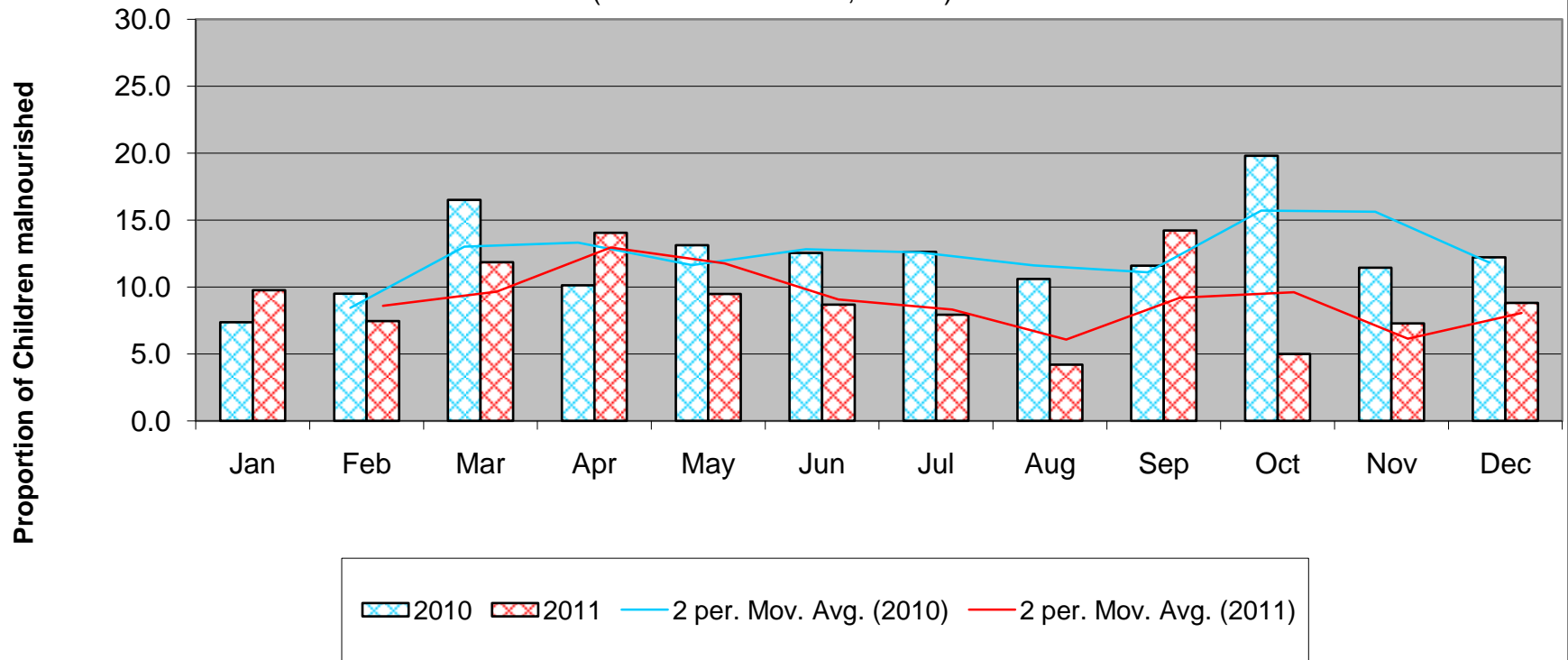
Outcome indicators	SOOL PLATEAU Livelihood Zone, Summary of Findings		
	Deyr '10/11 N= 637 December 2010	Gu '11 N=629 July 2011	Deyr '11/12 N=654 December 2011
Child Nutrition status			
o GAM (WHZ<-2 or oedema)	8.3 (6.0-11.4)	15.9 (13.6-18.4)	11.6 (8.7-15.3)
o SAM (WHZ<-3 or oedema)	1.6 (0.8-3.1)	4.0 (2.9- 5.4)	3.4 (2.0-5.7)
o Mean weight-for-height	-0.46±1.28	-0.73±1.26	-0.55±1.19
o Oedema	0.6	1.0(0.3-3.0)	1.2
o MUAC (<12.5 cm or oedema)	2.9 (1.7-5.0)	10.0 (7.1-14.0)	5.2 (3.2-8.5)
o Severe MUAC (<11.5cm)	1.3 (0.5-3.1)	3.3 (1.9- 5.7)	1.5 (0.9-2.7)
o HIS Nutrition Trends	High >10% and stable trend	High >15%) and increasing	Low(<10%) and fluctuating
o TFPs/SFPs Admission trends	Increasing trend in Dhahar	High and increasing	Low and fluctuating numbers
Crude death Rate/10,000/day (90days)	0.45 (0.25-0.80)	0.39 (0.21-0.74)	0.48 (0.22-1.06)
Under 5 death Rate/10,000/day (90days)	1.11(0.49-2.47)	0.41 (0.13-1.30)	1.22 (0.19-7.31)
Non-pregnant women with MUAC <18.5 cm	2.2	0.6	0.4 (0.1-1.3)
Pregnant & Lactating women with MUAC<21.0 cm	-	6.5 (2.3-10.6)	5.3 (0.1-11.5)
Pregnant & Lactating women with MUAC<23.0 cm	19.0	22.8 (11.0-34.7)	21.1(13.2-28.9)
OVERALL NUTRITION SITUATION	Alert	Critical	Serious
Child Morbidity, Immunization, IYCF			
o Disease Outbreaks: o Morbidity based on 2wk recall	No outbreaks 48.9 ; Diarrhoea- 19.4; Pneumonia – 18.0	No Outbreak Morbidity, 27.8; Diarrhea:13.2 ; Pneumonia,8.1; Measles,4.7	No Outbreak Morbidity, 32.3, Diarrhea:9.2 Pneumonia,10.1 Measles,7.4
o Immunization status/Vit. A	Vit A – 60.6, Measles- 68.9	Vit.A, 78.1 Polio: 86.5 Measles:79.2	Vit-A,64.2 Measles: 63.1; polio, 76.3
o Children eating from <4 fdgps	75.7	80.8	78.2
o Children meeting min. feeding freq.	47.6	78.1	44.1
Public Health Indicators; Gender	N=373	N=399	N=396
o Households (HH) accessing safe water	22.4	14.0	33.6
o HH accessing sanitation facilities	66.1	14.0	68.7
o Relation between GAM & child sex	Insignificant	Insignificant	Insignificant
o Relation between GAM & sex of hh head	Insignificant	Insignificant	Insignificant
Proportion of hh consuming <4 fd gps	10.1	2.0	15.2
Food Security Phase	HE/Emergency	HE/Emergency	AFLC/ Crisis
Overall Risk to Deterioration	STABLE	POTENTIAL TO DETERIORATE	Stable



Malnutrition Trends at Health Facilities

Sool Plateau MCHs, 2010-2011

(Data source : MOH, SCRS)



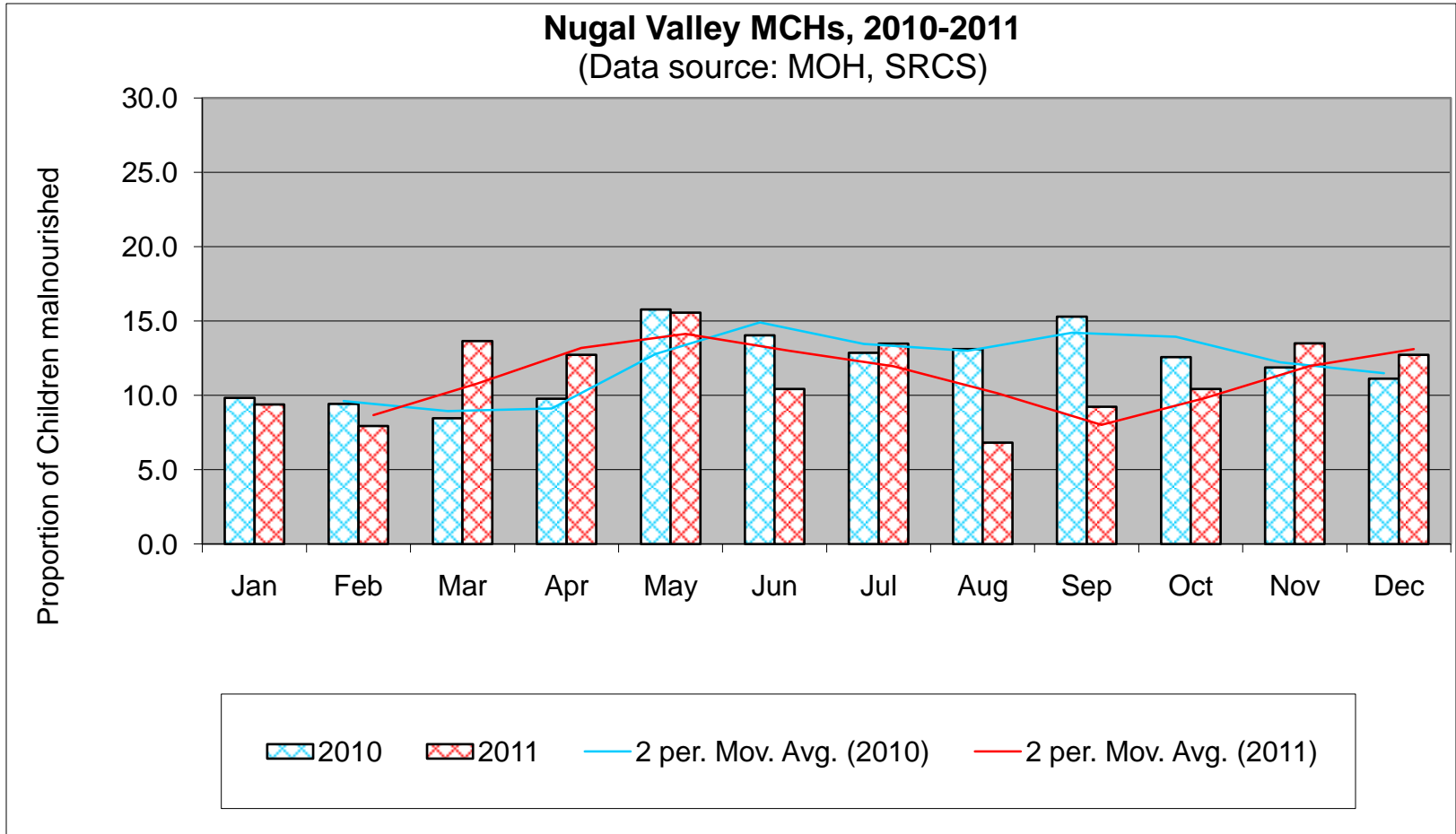
Low (<10%) and stable trend

NUGAL VALLEY Livelihood Zone, Summary of Findings

Outcome indicators	Deyr '10/11 N= 516 December 2010	Gu '11 N=582 July 2011	Deyr '11/12 N=637 December 2011
Child Nutrition status			
○ GAM (WHZ<-2 or oedema)	10.3 (7.0-14.8)	23.2 (18.5-28.1)	16.3 (13.5-19.6)
○ SAM (WHZ<-3 or oedema)	1.0 (0.4-2.3)	6.7 (4.4-10.0)	2.7 (1.74.2)
○ Mean weight-for-height	-0.63±1.14	-1.11±1.15	-0.90±1.19
○ Oedema	0	0.1	0.6
○ MUAC (<12.5 cm or oedema)	4.2 (2.5-6.0)	11.5 (9.1-14.5)	3.0 (1.9-4.7)
○ Severe MUAC (<11.5cm)	1.2 (0.3-2.0)	2.9 (1.6-5.3)	1.5(0.9-2.7)
○ HIS Nutrition Trends	Low (<5% and increasing)	High (>15%) and fluctuating	High (>10%) and fluctuating
○ TFPs/SFPs Admission trends	Increasing admission to OTPs	High and increasing	High and fluctuating
Crude death Rate/10,000/day (90days)	0.53 (0.32-0.92)	0.34 (0-14.0.82)	0.19 (0.09-0.40)
Under 5 death Rate/10,000/day (90days)	0.61(0.20-1.87))	0.63 (0.17-2.29)	0.48 (0.15-1.45)
Non-pregnant women with MUAC <18.5 cm	2.0	0	0.5 (0.0-1.5)
Pregnant & Lactating women with MUAC<21.0 cm	-	2.4 (0.0-5.3)	1.3 (0.0-3.2)
Pregnant & Lactating women with MUAC<23.0 cm	22.9	23.5 (13.8-33.2)	9.8 (4.5-15.3)
OVERALL NUTRITION SITUATION	Serious	Very critical	Critical
Child Morbidity, Immunization, IYCF			
○ Disease Outbreaks: ○ Morbidity based on 2wk recall	No outbreaks Overall morbidity,40.4 ; Diarrhoea- 13.2; Pneumonia- 15.1	No outbreak Overall morbidity, 45.3; Diarrhea:29; Pneumonia:10.8 Fever:23.39; Measles:5.5	No outbreak Overall morbidity,33.9; Diarrhoea: 8.4; Pneumonia: 6.3; Measles: 4.7; Fever: 27
○ Immunization status/Vit. A	Vit A- 52.5; Measles- 55.3	Vit. A,63.7; Polio:77.6; Measles Va:63.6	Polio 82.3 Vit- A, 65.3; Measles : 64.7
○ Children eating from <4 fdgps	78.9	81.8	97.4
○ Children meeting min. feeding freq.	22.3	27.6	51.0
Public Health Indicators; Gender	N= 312	N=421	N=403
○ Households (HH) accessing safe water	19.9	1.6	19.3
○ HH accessing sanitation facilities	30.3	27.0	58.8
○ Relation between GAM & child sex	Insignificant	Insignificant	Insignificant
○ Relation between GAM & sex of hh head	Insignificant	Insignificant	Insignificant
Proportion of hh consuming <4 fd gps	17.3	2.0	15.4
Food Security Phase	BEI/Stressed	AELC/Crisis	AELC/Crisis



Malnutrition Trends at Health Facilities



High (>10%) and fluctuating trend

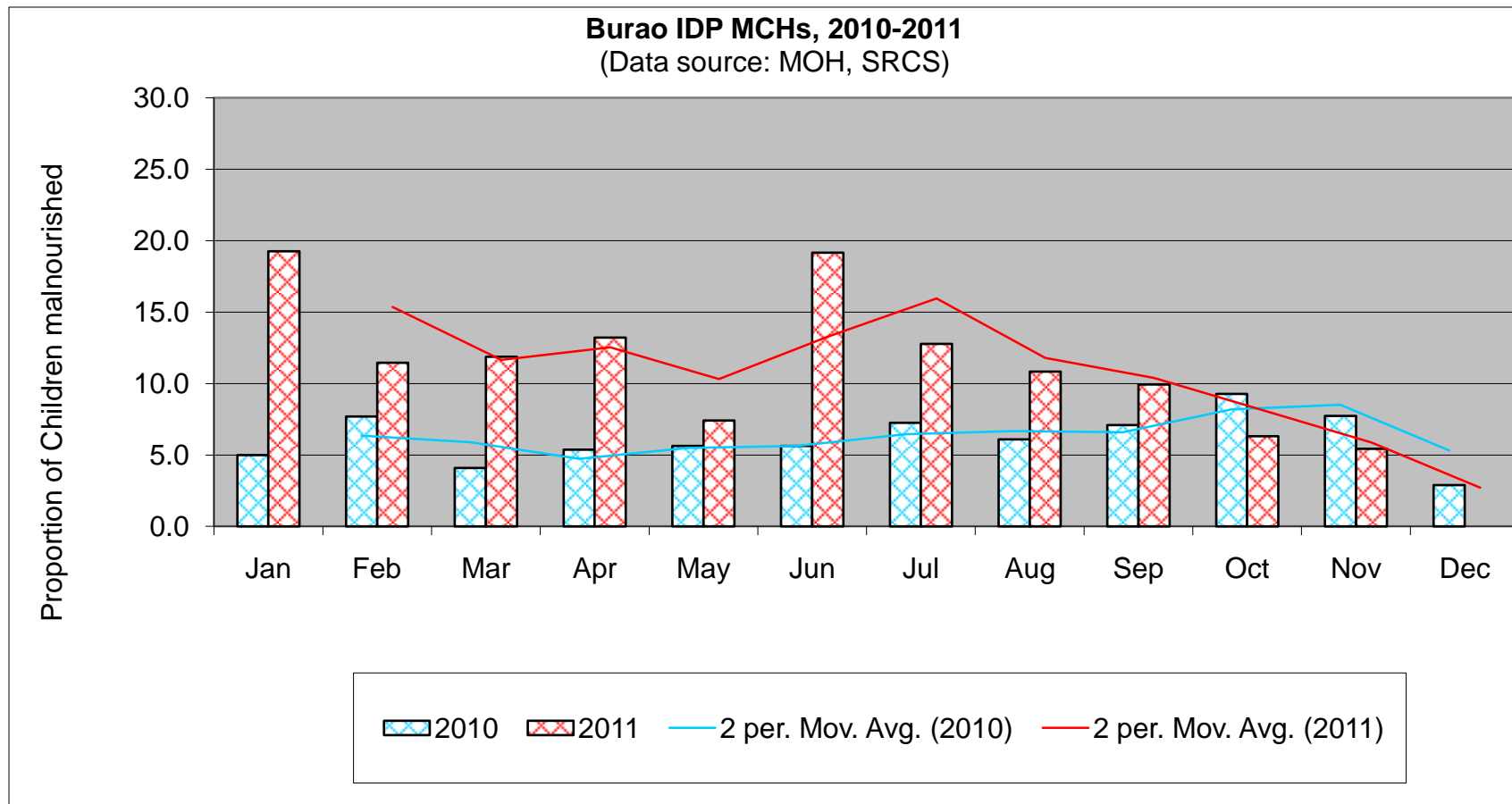


Burao IDP, Summary of Findings

Outcome indicators

	Deyr '10/11 N= 427 November 2010	Gu'11 N=652 June 2011	Deyr '11/12 N=617 November 2011
Child Nutrition status			
o GAM (WHZ<-2 or oedema)	12.1 (8.8-15.4)	19.1(14.6-24.5)	20.3 (15.3-26.3)
o SAM (WHZ<-3 or oedema)	1.7 (0.8-3.4)	5.6 (4.1-7.7)	4.5 (2.6-7.9)
o Mean weight-for-height	-0.65±1.08	-89±1.21	-0.86±1.22
o Oedema	0.5	1.2	0.6
o MUAC (<12.5 cm or oedema)	4.4 (2.9-6.0)	8.1(5.5-11.5)	9.4(6.1-14.3)
o Severe MUAC (<11.5 cm)	0.8 (0.0-1.6)	2.5 (1.4-4.5)	1.6 (0.8-3.4)
o HIS Nutrition Trends	Low (<10%) and stable trends	High (>15%) and increasing	Low (<10%) and decreasing trends
o TFPs/SFPs Admission trends	High and Stable	High and increasing	High and fluctuating
Crude death Rate/10,000/day (90days)	0.47(0.29-0.75)	0.56 (0.30-0.91)	0.31 (0.018-0.54)
Under 5 death Rate/10,000/day (90days)	1.36 (0.68-2.69)	2.02 (1.21-3.34)	0.14 (0.02-1.11)
Non-pregnant women with MUAC <18.5 cm	0	0.4 (0.0-1.4)	2.8 (0.1-5.7)
Pregnant & Lactating women with MUAC<21.0 cm	-	2.3 (2.8-11.6)	3.3 (0.3-6.2)
Pregnant & Lactating women with MUAC<23.0 cm	20.6	7.2 (2.8-11.6)	9.8 (4.5-15.1)
OVERALL NUTRITION SITUATION	Serious	Critical	Very Critical
Child Morbidity, Immunization, IYCF			
o Disease Outbreaks: o Morbidity based on 2wk recall	No outbreak Overall morbidity,32.7 Diarrhea:16.6 Pneumonia: 13.0	No disease outbreak Overall morbidity,31.1; Diarrhea:15.6; Pneumonia,14.2;Measles:1.6;	No disease outbreak Overall morbidity,31.1; Diarrhea:15.6; Pneumonia,9.4;Measles:2.1;
o Immunization status/Vit. A	Measles: 69.5, Vit. A : 69.6	Vit .A,81.9; Polio vacc,95.6; Measles, vacc,72.9	Vit .A,71.3; Polio vacc,89.6; Measles,vacc,81.0
o Children eating from <4 fdgps	96.6	92.4	98.6
o Children meeting min. feeding freq.	48.1	47.3	39.4
Public Health Indicators; Gender	N=427	N=512	N=326
o Households (HH) accessing safe water	88.5	72.9	98.7
o HH accessing sanitation facilities	70.0	75.6	67.8
o Relation between GAM & child sex	Insignificant	Insignificant	Insignificant
o Relation between GAM & sex of hh head			
Proportion of hh consuming <4 fd gps	21.5(16.6-26.5)	13.3	16.4
Food Security Phase	N/A	AFLC/ Crisis	AFLC/ Crisis
Overall Risk to Deterioration	UNSTABLE	UNSTABLE	POTENTIAL TO IMPROVE

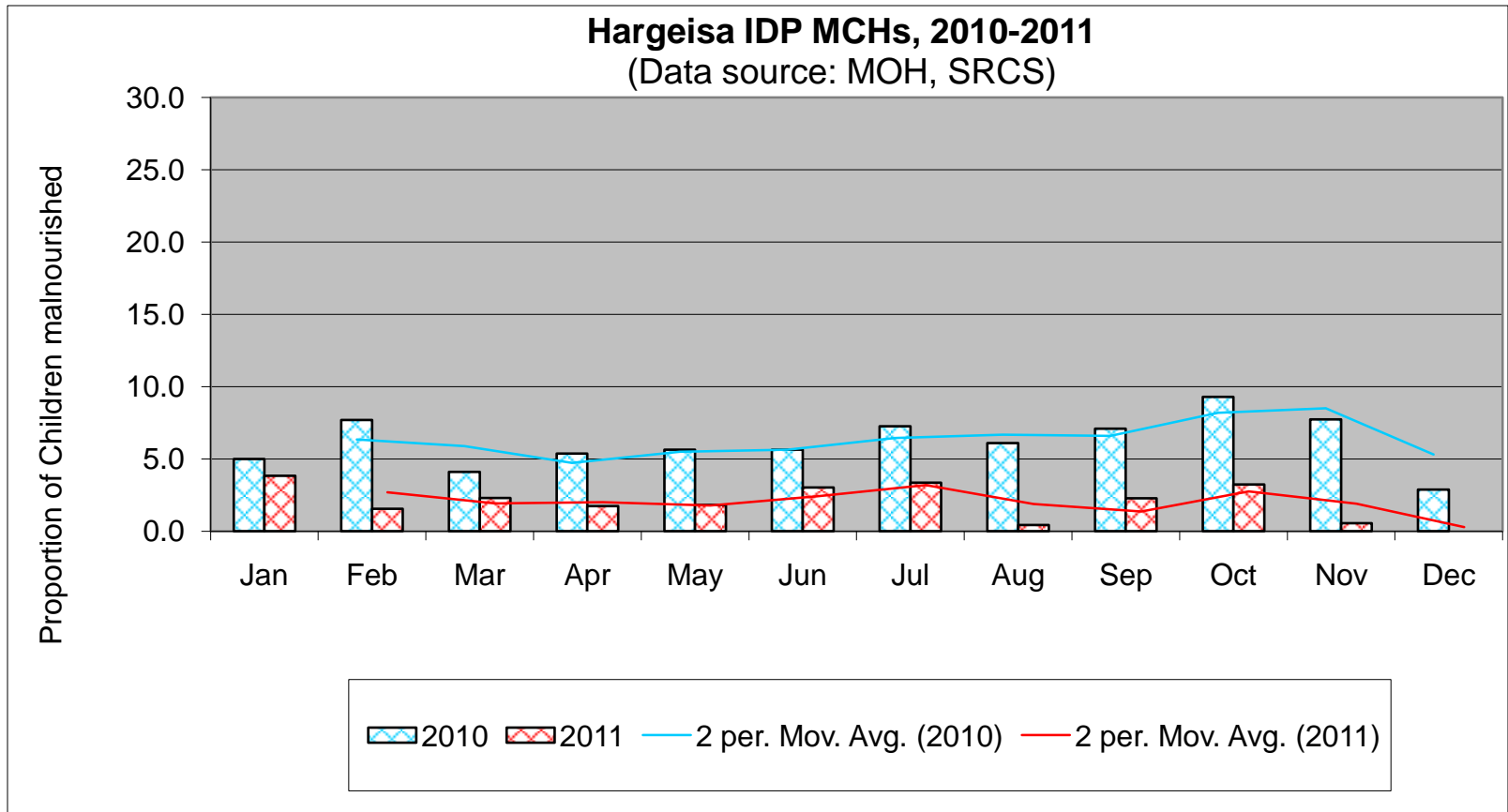
Malnutrition Trends at Health Facilities



Low (<10%) and decreasing trend

Outcome indicators	Hargeisa IDP, Summary of Findings		
	Deyr '10/11 N= 423 November 2010	Gu'11 N= 452 June 2011	Deyr '11/12 (N=690) November 2011
Child Nutrition status			
o GAM (WHZ<-2 or oedema)	10.8 (8.9-13.0)	10.9 (8.1-14.05)	12.0 (8.9-16.1)
o SAM (WHZ<-3 or oedema)	1.5 (0.8-2.8)	2.2 (1.0-5.0)	1.3 (0.7-2.3)
o Mean weight-for-height	-57 ±1.13	-0.57±1.17	-0.52±1.18
o Oedema	0.2	0.1	0.4
o MUAC (<12.5 cm or oedema)	4.6 (2.9-7.3)	6.4 (4.3-19.3)	6.5 (4.4-9.5)
o Severe MUAC (<11.5cm)	1.5 (0.7-3.6)	1.6 (0.8-3.3)	1.9 (1.0-3.6)
o HIS Nutrition Trends	Low (<10%) and stable trends	Low (<10%) and decreasing	Low (<5%) and decreasing trend
Crude death Rate/10,000/day (90days)	0.36 (0.21-0.62)	0.37 (0-19.0.73)	0.38 (0.20-0.71)
Under 5 death Rate/10,000/day (90days)	0.95 (0.44-2.04)	0.59 (0.22-1.55)	0.44 (0.14-1.450)
Non-pregnant women with MUAC <18.5 cm	0	0.9 (0.0-2.1)	1.0 (0.0-2.4)
Pregnant & Lactating women with MUAC<21.0 cm	-	2.5 (7.1-20.5)	4.2 (1.5-6.8)
Pregnant & Lactating women with MUAC<23.0 cm	15.4	13.0 (7.1-20.5)	9.3 (4.8-13.8)
OVERALL NUTRITION SITUATION	Serious	Serious	Serious
Child Morbidity, Immunization, IYCF			
o Disease Outbreaks:	No outbreak	No out break	No out break
o Morbidity based on 2wk recall	Overall morbidity,34.4; Diarrhea,16.9; Pneumonia,11.7	Overall morbidity,25.3; Diarrhoea ,11.1; Pneumonia 9.9 Measles; 2.8 ;Febrile, 9.7	Overall morbidity,14.5; Diarrhoea ,9.1; Pneumonia 4.3 Measles; 0.1 ; Febrile, 7.4
o Immunization status/Vit. A	Measles vaccination:73.9, VitaminA:76.3	Vitamin A, 81.8 ; Measles Vaccination,80.2	Vitamin A, 66.4:polio vacc,91.3 ; Measles Vaccination,65.7
o Children eating from <4 fdgps	86	93.1	87.2
o Children meeting min. feeding freq.	35.2	55.1	51.4
Public Health Indicators; Gender	N=423	N=452	N=412
o Households (HH) accessing safe water	93.9(87.4-100.0)	76.5	97.3
o HH accessing sanitation facilities	77.1	80.3	90.5
o Relation between GAM & child sex	Insignificant	Insignificant	Insignificant
o Relation between GAM & sex of hh head			
Proportion of hh consuming <4 fd gps	12.3	10.2	16.4
Food Security Phase	BFI/Stressed	BFI/Stressed	BFI/Stressed
Overall Risk to Deterioration	UNSTABLE	STABLE	STABLE

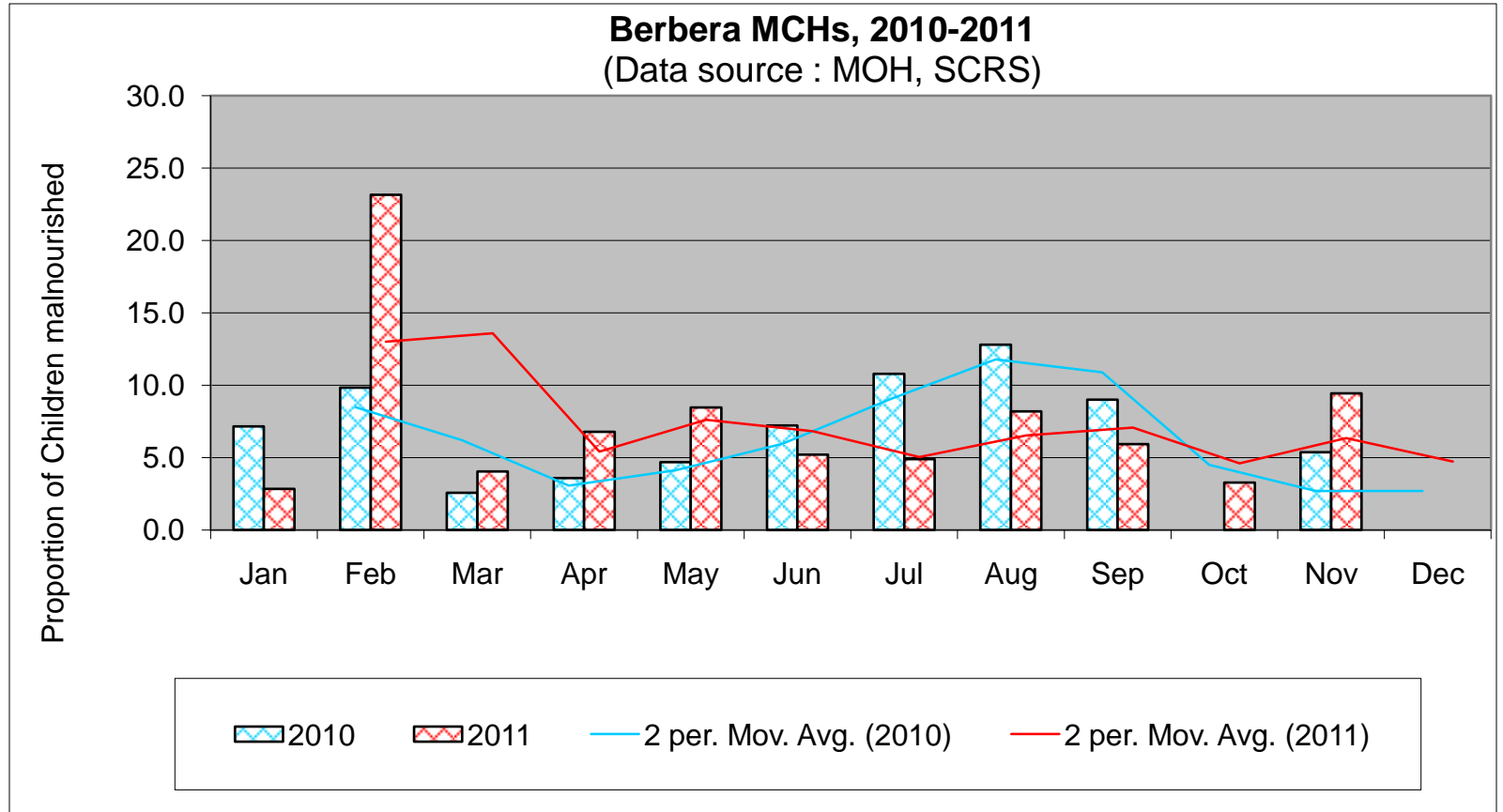
Malnutrition Trends at Health Facilities



Low (<5%) and stable trend

Outcome indicators	Berbera IDP, Summary of Findings		
	Deyr '10/11 N=379 November 2010	Gu'11 N=542 June 2011	Deyr-11/12 N=610 November 2011
Child Nutrition status			
o GAM (WHZ<-2 or oedema)	14.2 (10.9-18.3)	14.5	18.0
o SAM (WHZ<-3 or oedema)	2.2 (1.2-4.1)	3.0	3.1
o Oedema	0	0	0.2
o MUAC (<12.5 cm or oedema)	9.2 (5.1-13.3)	5.9	6.6
o Mean weight-for-height	- 0.80 ±1.15	-0.74±1.18	-0.89±1.18
o HIS Nutrition Trends	Low (<10%) and stable trends	Low (<10%) and stable trends	Low (<10%) and fluctuating trend
Crude death Rate/10,000/day (90days)	0.12 (0.05-0.33)	0.28 (0.15-0.54)	0.37 (0.18-0.76)
Under 5 death Rate/10,000/day (90days)	0.33(0.08-1.35)	0.31 (0.09-1.13)	1.27(0.55-2.95)
Non-pregnant women with MUAC <18.5 cm	0.5	1.4	1.3
Pregnant & Lactating women with MUAC<21.0 cm	-	0.9	1.0
Pregnant & Lactating women with MUAC<23.0 cm	16.1	9.4	8.9
OVERALL NUTRITION SITUATION	Serious	Serious	Critical
Child Morbidity, Immunization, IYCF			
o Disease Outbreaks: o Morbidity based on 2wk recall	No outbreak Overall morbidity,35.6; Diarrhea: 21.8 Pneumonia:11.3	No outbreak Overall morbidity,34.1; Diarrhoea 11.8 Pneumonia 6.0; Measles, 1.2	No outbreak Overall morbidity,23.4; Diarrhea: 17.0 Pneumonia:5.7; Measles:1.0
o Immunization status/Vit. A	Measles vaccination:72.7, Vit. A: 75.8	Measles vaccination85.9 Vitamin A 87.3	Vitamin A: 67.2; Measles Vaccination. 65.4
o Children eating from <4 fdgps	96.1	70.3	98.6
o Children meeting min. feeding freq.	28.8(20.3-37.3)	55.8	48.6
Public Health Indicators; Gender	N=379		N=440
o Households (HH) accessing safe water	96.9	98.5	97.0
o HH accessing sanitation facilities	79.7	88.9	94.3
o Relation between GAM & child sex o Relation between GAM & sex of hh head	Insignificant	Insignificant	Insignificant
Proportion of hh consuming <4 fd gps	12.9	21.6	12.0
Food Security Phase	BFI/Stressed	BFI/Stressed	AFLC/ Crisis
Overall Risk to Deterioration	UNSTABLE	STABLE	POTENTIAL TO IMPROVE

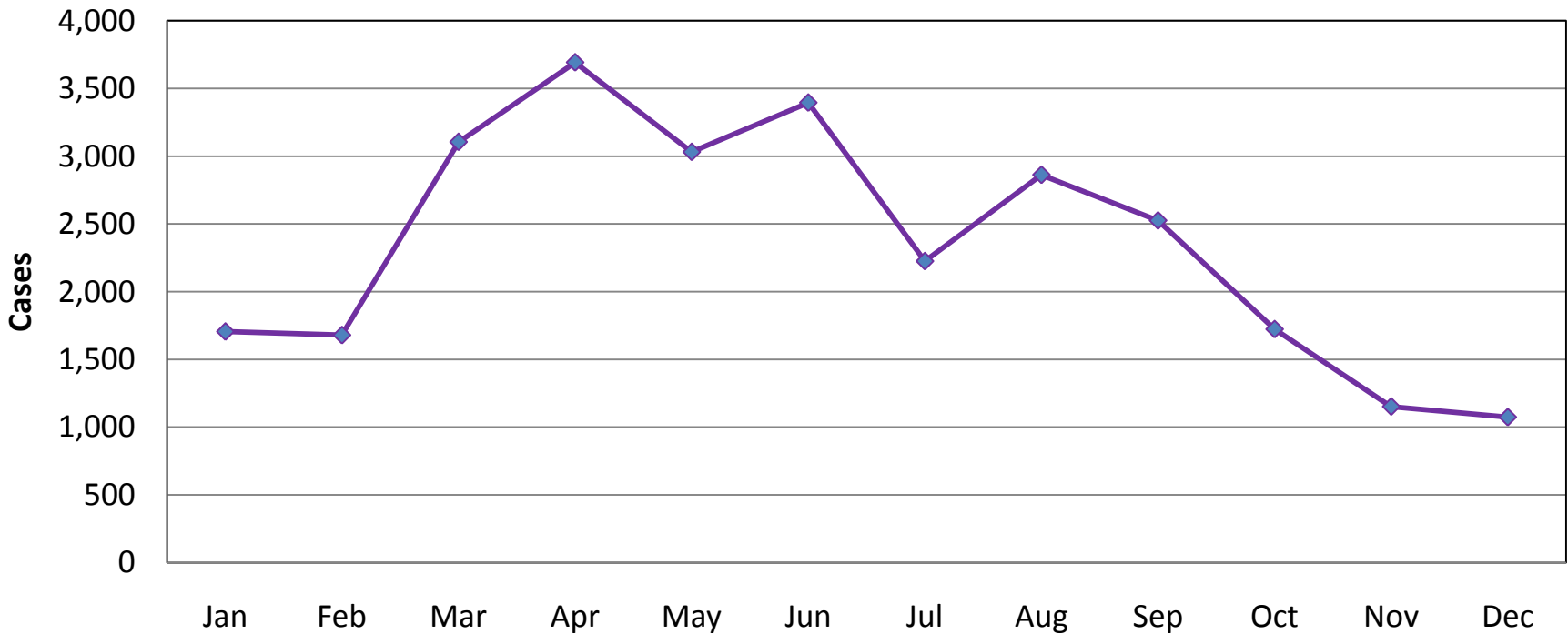
Malnutrition Trends at Health Facilities



Low (<10%) and fluctuating trend

Admission Trends in Feeding Programs

**Total Monthly Admissions into the Feeding Programs
Awdal, Togdheer, Sanaag, W/Galbeed, Jan-Dec 2011**
(Data Source: Nutrition Cluster Coordination)



High number (>1000) and decreasing trend



Outcome indicators	W. Galbeed Region Urban Population, Summary of Findings	
	Gu '11 N=518 July 2011	Deyr'11 N=392 December 2011
Child Nutrition status		
○ <i>GAM (WHZ<-2 or oedema)</i>	7.5 (5.2-10.8)	8.2 (5.4-12.2)
○ <i>SAM (WHZ<-3 or oedema)</i>	01.0 (0.3-2.8)	0.8(0.2-2.3)
○ <i>Oedema</i>	0	0
○ <i>MUAC (<12.5 cm or oedema)</i>	2.3 (1.2-4.2)	1.3 (0.3-5.2)
○ <i>MUAC (11.5 cm or oedema)</i>	0.4 (0.1-1.6)	0
○ <i>Mean weight-for-height</i>	-0.33±1.11	-0.29±1.14
OVERALL NUTRITION SITUATION	Alert	Alert
Child Morbidity		
○ <i>Disease Outbreaks:</i>	No outbreak	No outbreak
○ <i>Morbidity based on 2wk recall</i>	Overall morbidity,9.2 Diarrhea: 7.3 Pneumonia:1.7	Overall morbidity,18.2; Diarrhoea 7.4 Pneumonia 3.8
Overall Risk to Deterioration	STABLE	STABLE

Togdheer Region Urban Population, Summary of Findings

Outcome indicators	Gu'11 N=549 July 2011	Deyr'11/12 N=430 December 2011
Child Nutrition status		
○ <i>GAM (WHZ<-2 or oedema)</i>	9.7(6.8-13.5)	7.1(4.8-10.4)
○ <i>SAM (WHZ<-3 or oedema)</i>	1.1(0.5-2.3)	0.5 (0.1-3.7)
○ <i>Oedema</i>	0	0
○ <i>MUAC (<12.5 cm or oedema)</i>	3.6 (2.4-5.3)	1.6 (0.7-3.6)
○ <i>MUAC (<11.5 cm or oedema)</i>	0.7(0.3-1.9)	0.2 (0.0-1.8)
○ <i>Mean weight-for-height</i>	-0.5±1.07	-0.46±1.08
OVERALL NUTRITION SITUATION	Alert	Alert
Child Morbidity		
○ <i>Disease Outbreaks:</i> ○ <i>Morbidity based on 2wk recall</i>	No outbreak Overall morbidity,15.0 Diarrhea: 11.2 Pneumonia:2.2	No outbreak Overall morbidity,21.6; Diarrhoea 15.3 Pneumonia 0.2
Overall Risk to Deterioration	STABLE	STABLE

Outcome indicators	Awdal Region Urban Population, Summary of Findings	
	Gu'11 N=508 July 2011	Deyr'11/12 N=473 December 2011
Child Nutrition status		
○ <i>GAM (WHZ<-2 or oedema)</i>	13.5 (10.7-17.6)	12.5 (9.1-16.8)
○ <i>SAM (WHZ<-3 or oedema)</i>	1.2(0.6-2.5)	1.5(0.5-4.3)
○ <i>Oedema</i>	0	0
○ <i>MUAC (<12.5 cm or oedema)</i>	3.3(2.2-5.0)	2.9(1.5-5.4)
○ <i>MUAC (11.5 cm or oedema)</i>	0.2 (0.0-1.5)	1.7 (0.7-3.7)
○ <i>Mean weight-for-height</i>	-0.6±1.22	0.6±1.11
OVERALL NUTRITION SITUATION	Serious	Serious
Child Morbidity		
○ <i>Disease Outbreaks:</i>	No outbreak	No outbreak
○ <i>Morbidity based on 2wk recall</i>	Overall morbidity, 9.6; Diarrhea: 5.9 Pneumonia:3.7	Overall morbidity,19.4; Diarrhoea 14.6 Pneumonia 0.2
Overall Risk to Deterioration	STABLE	STABLE

Outcome indicators	Sool Region Urban Population, Summary of Findings	
	Gu '11 N=525 July 2011	Deyr '11/12 N=484 December 2011
Child Nutrition status		
○ <i>GAM (WHZ<-2 or oedema)</i>	12.4 (8.8-16.0)	12.4 (9.2-16.5)
○ <i>SAM (WHZ<-3 or oedema)</i>	3.0 (1.6-4.5)	1.9 (0.8-4.3)
○ <i>Oedema</i>	0	0
○ <i>MUAC (<12.5 cm or oedema)</i>	9.7(6.0-15.3)	3.1 (1.9-5.1)
○ <i>MUAC (<11.5 cm or oedema)</i>	2.5 (1.2-4.9)	0.4 (0.1-1.7)
○ <i>Mean weight-for-height</i>	-0.65±1.15	-0.58±1.12
OVERALL NUTRITION SITUATION	Serious	Serious
Child Morbidity		
○ <i>Disease Outbreaks:</i> ○ <i>Morbidity based on 2wk recall</i>	No outbreak Overall morbidity,11.6; Diarrhea: 10.2 Pneumonia: 0.8	No outbreak Overall morbidity,5.0; Diarrhoea 4.1 Pneumonia ,0.0
Overall Risk to Deterioration	STABLE	STABLE

Outcome indicators	Sanag Region Urban Population, Summary of Findings	
	Gu'11 N=548 July 2011	Deyr'11/12 N=425 December 2011
Child Nutrition status		
○ <i>GAM (WHZ<-2 or oedema)</i>	7.1 (5.2-9.6)	7.5 (5.6-10.0)
○ <i>SAM (WHZ<-3 or oedema)</i>	1.3 (0.6-2.6)	0.7 (0.2-2.1)
○ <i>Oedema</i>	0	0
○ <i>MUAC (<12.5 cm or oedema)</i>	4.2 (2.8-6.2)	3.3 (1.5-7.3)
○ <i>Mean weight-for-height</i>	-0.50±0.98	0.09±1.17
OVERALL NUTRITION SITUATION	Alert	Alert
Child Morbidity		
○ <i>Disease Outbreaks:</i>	No outbreak	No outbreak
○ <i>Morbidity based on 2wk recall</i>	Overall morbidity,8.2; Diarrhea: 4.4 Pneumonia:4.0	Overall morbidity,14.3; Diarrhoea 4.8 Pneumonia ,0.9
Overall Risk to Deterioration	STABLE	STABLE

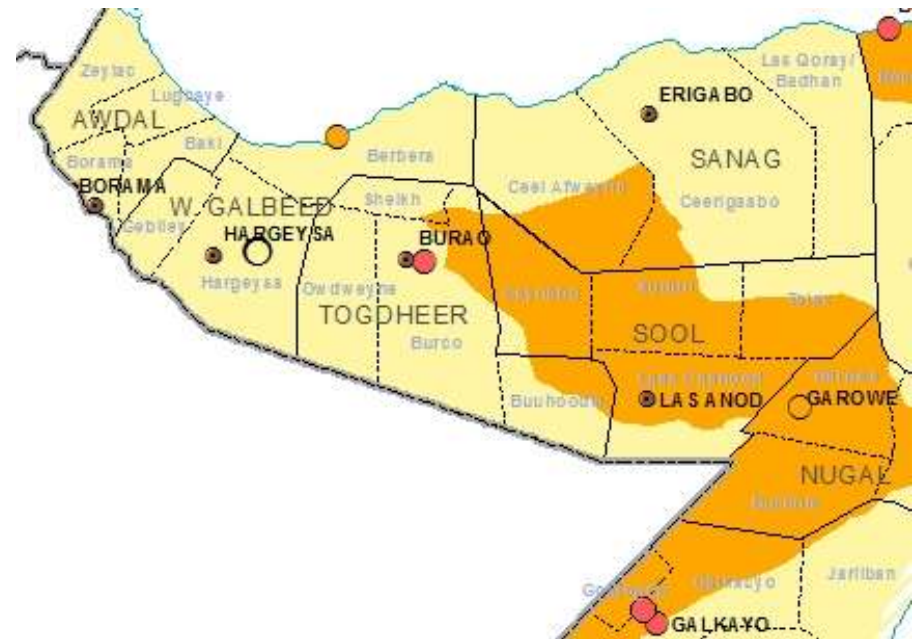
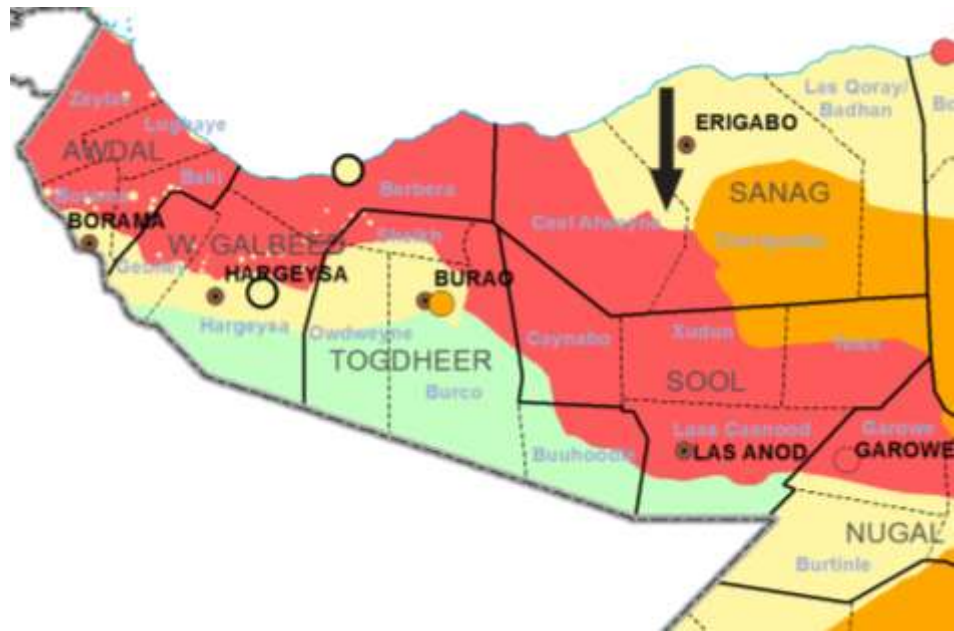
Summary of Driving Factors: -

- ***Aggravating factors***
 - Reduced milk access in Hawd of Togdheer due to out-migration to Ethiopia
 - High morbidity in all livelihoods
 - Inappropriate child feeding and care practices
 - Poor access to sanitation facilities and safe water in rural LHZs
- ***Mitigating factors***
 - Increased humanitarian programmes in the region (health & feeding facilities, WASH)
 - Polio Immunization in November 2011
 - Improved milk access in most pastoral livelihoods
 - Increased cereal access following good cereal harvest in agro-pastoral livelihood
 - Social support

Nutrition Situation Estimates - Somaliland Maps

North West Regions Nutrition Situation Estimates, August 2011

North West Regions Nutrition Situation Estimates, January 2012



The End

Joseph Waweru
Fuaad Hassan
Osman Warsame
Abdullahi Warsame
Abdirashid Ismail