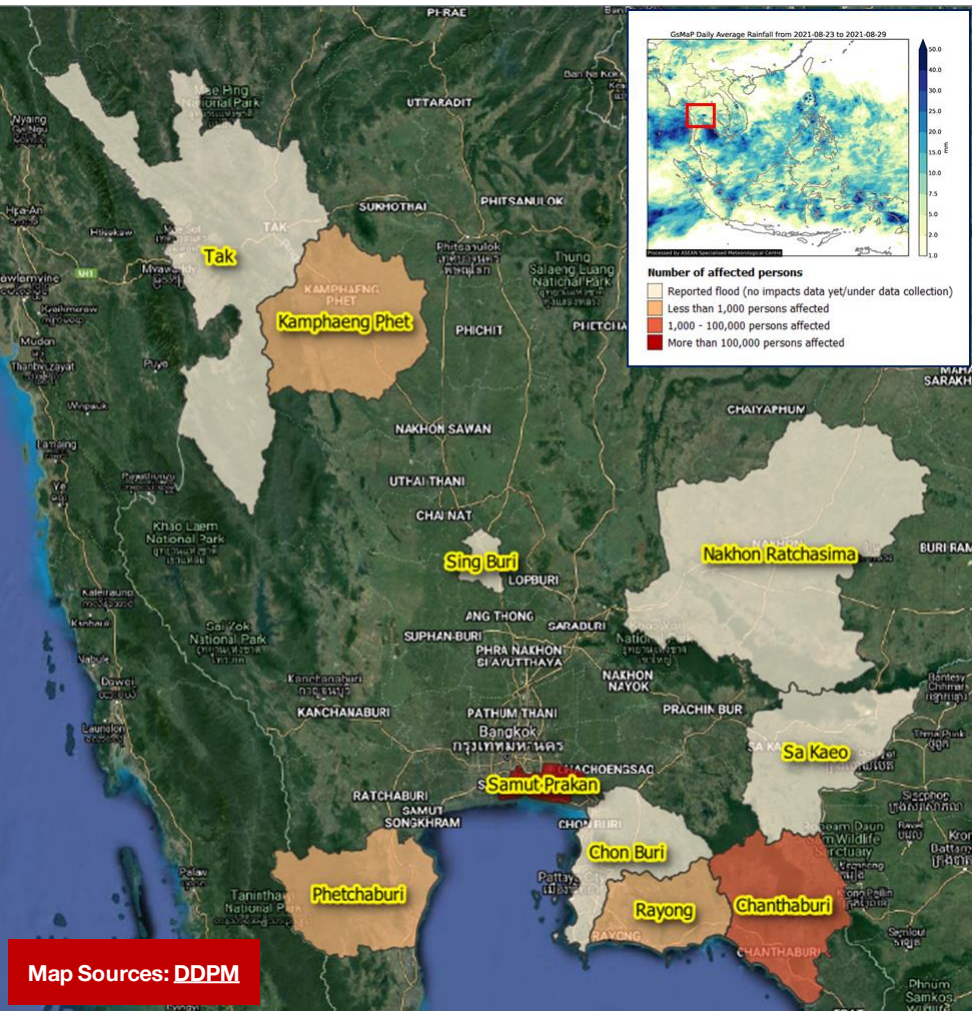


TUESDAY
31 AUG 2021
1530 HRS UTC +7

STORMS AND FLOODING IN 10 PROVINCES THAILAND FLASH UPDATE #1



THAILAND

- According to the report from Thailand's Department of Disaster Prevention and Mitigation ([DDPM](#)), a low-pressure cell located in the lower parts of Viet Nam together with the Southwest Monsoon that prevails over the Andaman Sea, Thailand, and the Gulf of Thailand, has brought heavy rains from 27-31 August. This has resulted in flash floods in 10 provinces of Thailand (Tak, Kamphaeng Phet, Nakhon Ratchasima, Prachinburi, Chon Buri, Rayong, Chanthaburi, Sa Kaeo, Singburi, and Samut Prakan).
- According to the [DDPM](#), **65,088 households (estimated 325,440 persons)** have reportedly been affected with the following details:
 - Chanthaburi: **233 households/1,165 persons** affected
 - Kamphaeng Phet: **5 households/25 persons** affected
 - Phetchaburi: **141 households/705 persons** affected
 - Rayong: **50 households/250 persons** affected
 - Samut Prakan: **64,659 households/323,295 persons** affected
 - Chon Buri, Nakhon Ratchasima, Sa Kaeo, Sing Buri, Tak: **data collection**
- As of 31 August, 0500 HRS UTC+7, no injuries or deaths have been reported. The situation has reportedly calmed but flooding persists in Samut Prakan province and is expected to recede within the next 2 days.
- The [DDPM](#) has identified the disaster to be within the provincial capacity to respond.
- For the next 24 hours, the Thai Meteorological Department ([TMD](#)) forecasts thunderstorms with some heavy rain in the North, Northeastern, Central, and Eastern regions of Thailand. Those living in at-risk areas in the Southern region are advised to take precaution from heavy rain which may cause flash floods. This is due to the monsoon trough that lies across several regions and the Southwest Monsoon that prevails over the Andaman Sea, Thailand, and Gulf of Thailand.
- The AHA Centre will continue to monitor for further developments and issue necessary updates

KEY FIGURES

325.4K
AFFECTED PERSONS

22
DISTRICTS IN 10 PROVINCES

Disclosure(s): Estimations are based on data reported/confirmed by National Disaster Management Organisations of the respective ASEAN Member State (Department of Disaster Prevention and Mitigation) and other verified sources

DATA SOURCES

ASEAN Disaster Monitoring & Response System (DMRS); Pacific Disaster Center (PDC Global); ASMC;

Thailand: DDPM, TMD;

Verified news media agencies.

DISCLAIMER

The AHA Centre was established in November 2011 by the Association of Southeast Asian Nations (ASEAN) Member States to facilitate cooperation and coordination among the Member States, relevant agencies of the United Nations, and international organisations in disaster management and humanitarian assistance.

The use of boundaries, geographic names, related information and potential considerations for response are for reference, not warranted to be error free or implying official endorsement from ASEAN Member States.

© 2021 AHA Centre.

All rights reserved.

You are receiving this email because you are registered in our distribution list.

Our mailing address is:
AHA Centre,
GRAHA BNPB 13th Floor,
Jl. Raya Pramuka Kav. 38,
Jakarta 13120 Indonesia