



Fiji Meteorological Service

*Official Source of reliable "first-level" information on tropical cyclones occurring in the South-West Pacific Ocean. All products on this site are on Fiji Standard Time = (UTC + 12HRS) Fiji Daylight Saving Time(DST) = (UTC + 13HRS)

ISO 9001: 2015 Certified Provider of Aviation Meteorological & Climatology Services

Weather Summary

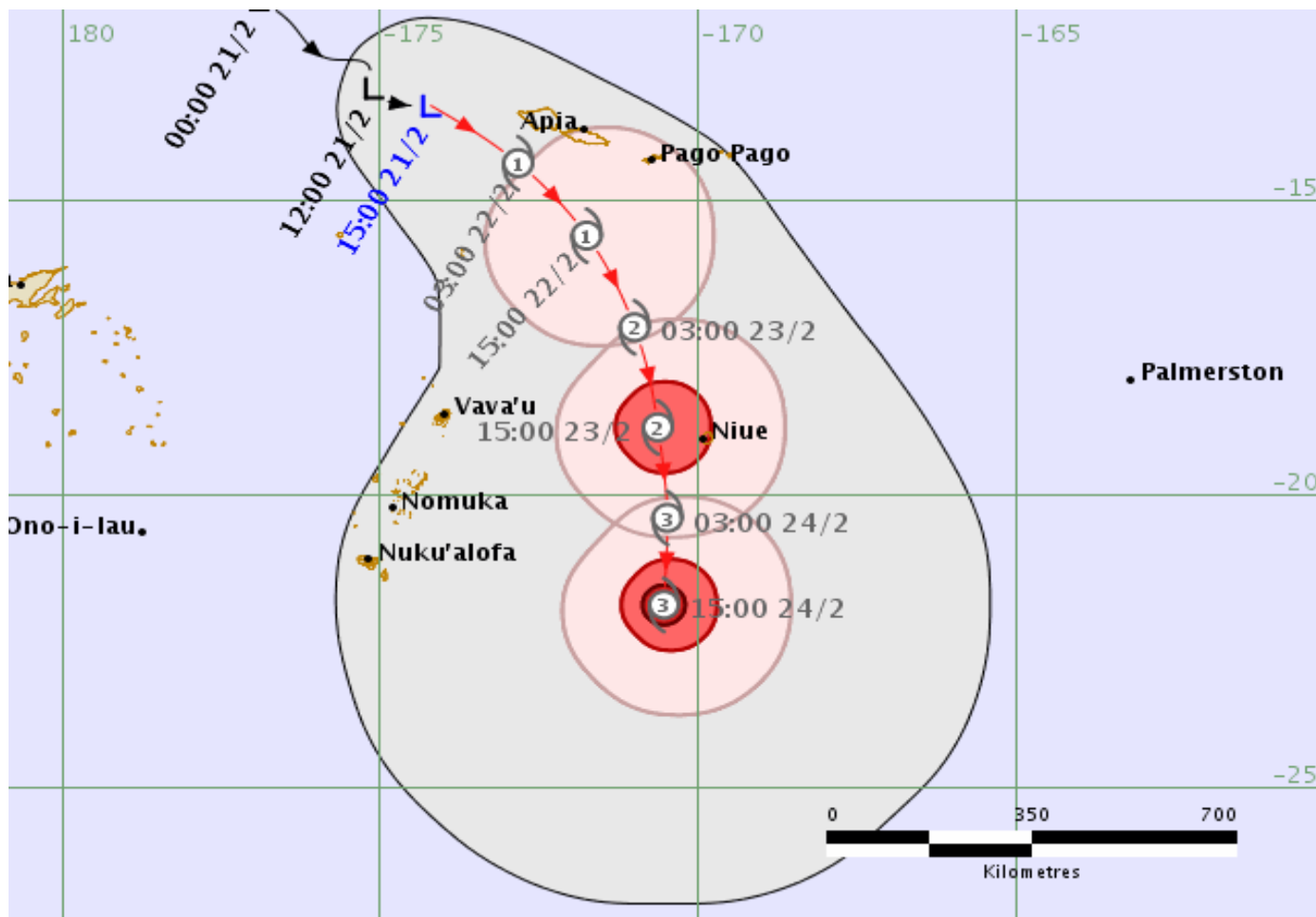


RSMC Nadi Tropical Cyclone Warning Centre

TROPICAL CYCLONE FORECAST TRACK MAP

Tropical Low

Tropical Cyclone Warning (http://www.met.gov.fj/international_warn.htm) Number 55 issued 1540 UTC Friday 21 February 2020



Forecast Conditions for Today Valid From 10.45 am Till 07.30 am

Current and Past Cyclone Details

Forecast Cyclone Details

Current and Past System Details		Forecast System Details	
Town	Forecast	(at 24, 48 and 72 hours from issue)	Min. Max.
Current Location and Intensity Number Ba	Fine apart from afternoon or evening showers	Forecast Location and Intensity Number Ba	21 33
Very Destructive Hurricane Force Winds		Very Destructive Wind Boundary	
Labasa	Fine apart from afternoon or evening showers	Forecast Location and Intensity Number Labasa	25 32
Destructive Storm Force Winds		Destructive Wind Boundary	
Danang	Fine apart from afternoon or evening showers	Forecast Location and Intensity Number Danang	24 31
Damaging Gale Force Winds		Damaging Gale Force Wind Boundary	
Past Track and Movement Nabouwalu	Fine apart from brief showers.	Most Likely Future Track	22 32
Past Location and Intensity Number Nadi	Fine apart from afternoon or evening showers	Range of Likely Tracks over 72 hours	22 32

The forecast path shown above is the Nadi's best estimate of the cyclone's future movement and intensity. There is always some uncertainty associated with tropical cyclone forecasting and the grey zone indicates the range of likely tracks.

Nausaru	Cloudy periods with some showers	21	31
Rakiraki	Fine apart from afternoon or evening showers	23	32
Name: Tropical Low			
Rotuma	Cloudy periods with some showers and possible thunderstorms.	25	32

Time (UTC)	Forecast	Intensity Category	Latitude (decimal deg.)	Longitude (decimal deg.)	Estimated Position Accuracy (km)
0000	3 pm February 21	Fine apart from brief showers. tropical low	13.4S	174.2W	165
+6hr	9 pm February 21	1	13.9S	173.5W	195
+12hr	3 am February 22	1	14.4S	172.8W	220
+18hr	9 am February 22	1	15.0S	172.3W	250
+24hr	3 pm February 22	1	15.6S	171.8W	280
+36hr	3 am February 23	Fine apart from afternoon or evening showers	16.2S	171.0W	340
+48hr	3 pm February 23	2	18.9S	170.6W	400
+60hr	3 am February 24	3	20.4S	170.5W	485
+72hr	3 pm February 24	3	21.9S	170.5W	570

Fiji time is UTC +12 hours.

For example, 0000 UTC Saturday is 1200 Saturday Fiji time.

For example, 1800 UTC Saturday is 0600 Sunday Fiji time.

Category Cyclone 1 has mean winds 34-47 knots with a central pressure greater than 985 hPa

Category Cyclone 2 has mean winds 48-63 knots with a central pressure 985-970 hPa

Category Cyclone 3 has mean winds 64-85 knots with a central pressure 970-945 hPa

Category Cyclone 4 has mean winds 86-107 knots with a central pressure 945-910 hPa

Category Cyclone 5 has mean winds greater than 107 knots with a central pressure less than 910 hPa

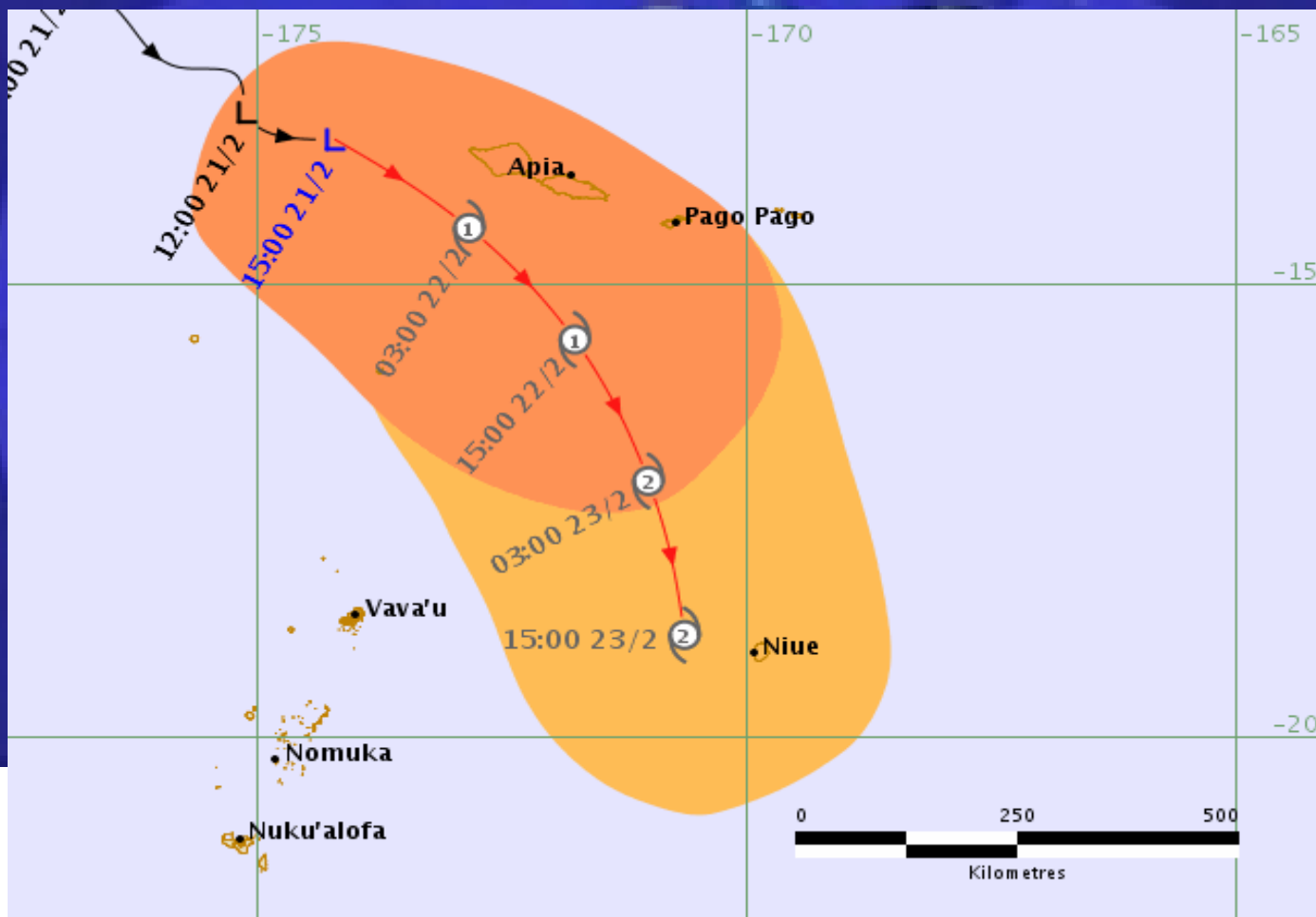
The next TC Threat Track Map is scheduled to be issued within six hours.

RSMC Nadi Tropical Cyclone Warning Centre

TROPICAL CYCLONE THREAT TRACK MAP

Tropical Low

Tropical Cyclone Warning (http://www.met.gov.fj/international_warn.htm) Number 55 issued 1545 UTC Friday 21 February 2020



Note: the past cyclone track may be adjusted on the basis of later information. The forecast track is considered the most likely based on the information available at time of analysis, and there may be other possible future tracks.

- Warning: Gales or stronger within 24 hours
- Alert: Gales or stronger within 24-48 hours
- Very Destructive Hurricane Force Winds
- Destructive Storm Force Winds
- Damaging Gale Force Winds

For the 24 hr and 48 hr positions, the three radii represent the extent of Hurricane, Storm and Gale winds away from the centre.

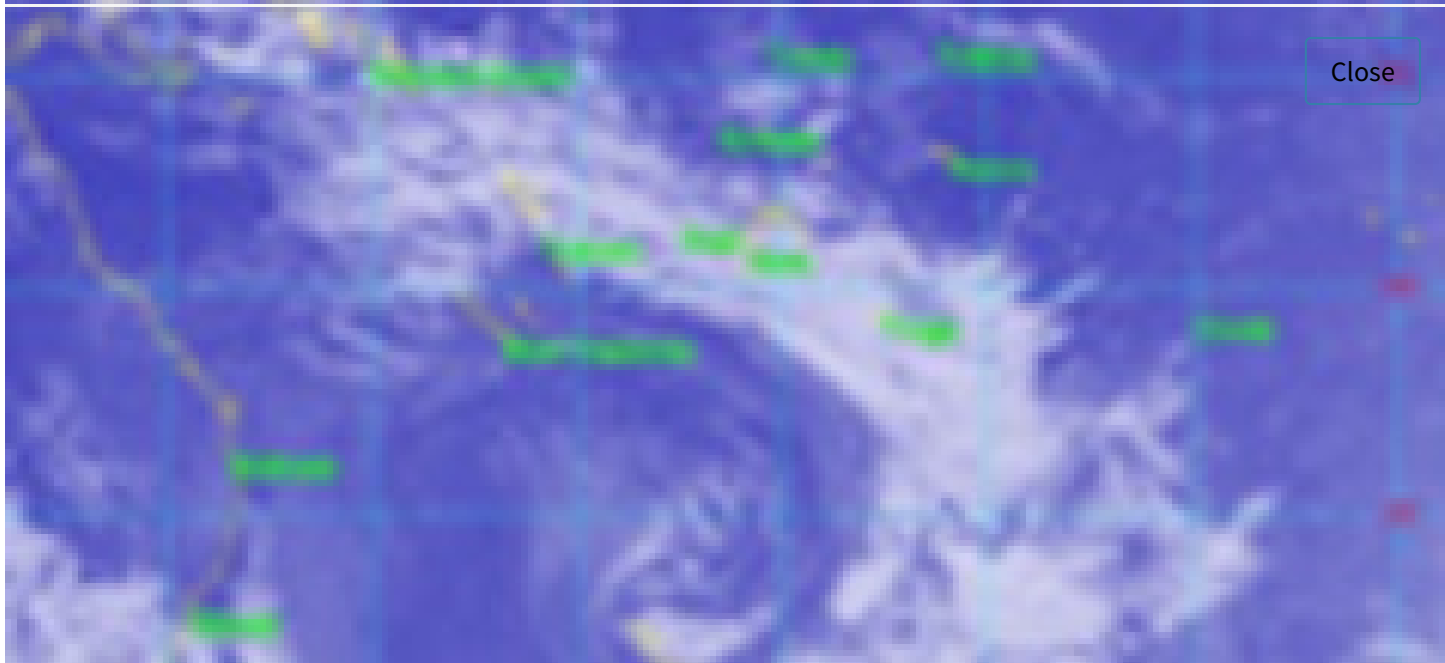
Name: Tropical Low
 Situation At: 1500 UTC Friday 21 February 2020
 Location: 13.4S, 174.2W
 Recent Movement: SE at 22 km/h

Fiji time is UTC +12 hours.
 For example, 0000 UTC Saturday is 1200 Saturday Fiji time.
 For example, 1800 UTC Saturday is 0600 Sunday Fiji time.

Category Cyclone 1 has mean winds 34-47 knots with a central pressure greater than 985 hPa

Category Cyclone 2 has mean winds 48-63 knots with a central pressure 985-970 hPa
Category Cyclone 3 has mean winds 64-85 knots with a central pressure 970-945 hPa
Category Cyclone 4 has mean winds 86-107 knots with a central pressure 945-910 hPa
Category Cyclone 5 has mean winds greater than 107 knots with a central pressure less than 910 hPa

The next TC Threat Track Map is scheduled to be issued within six hours.



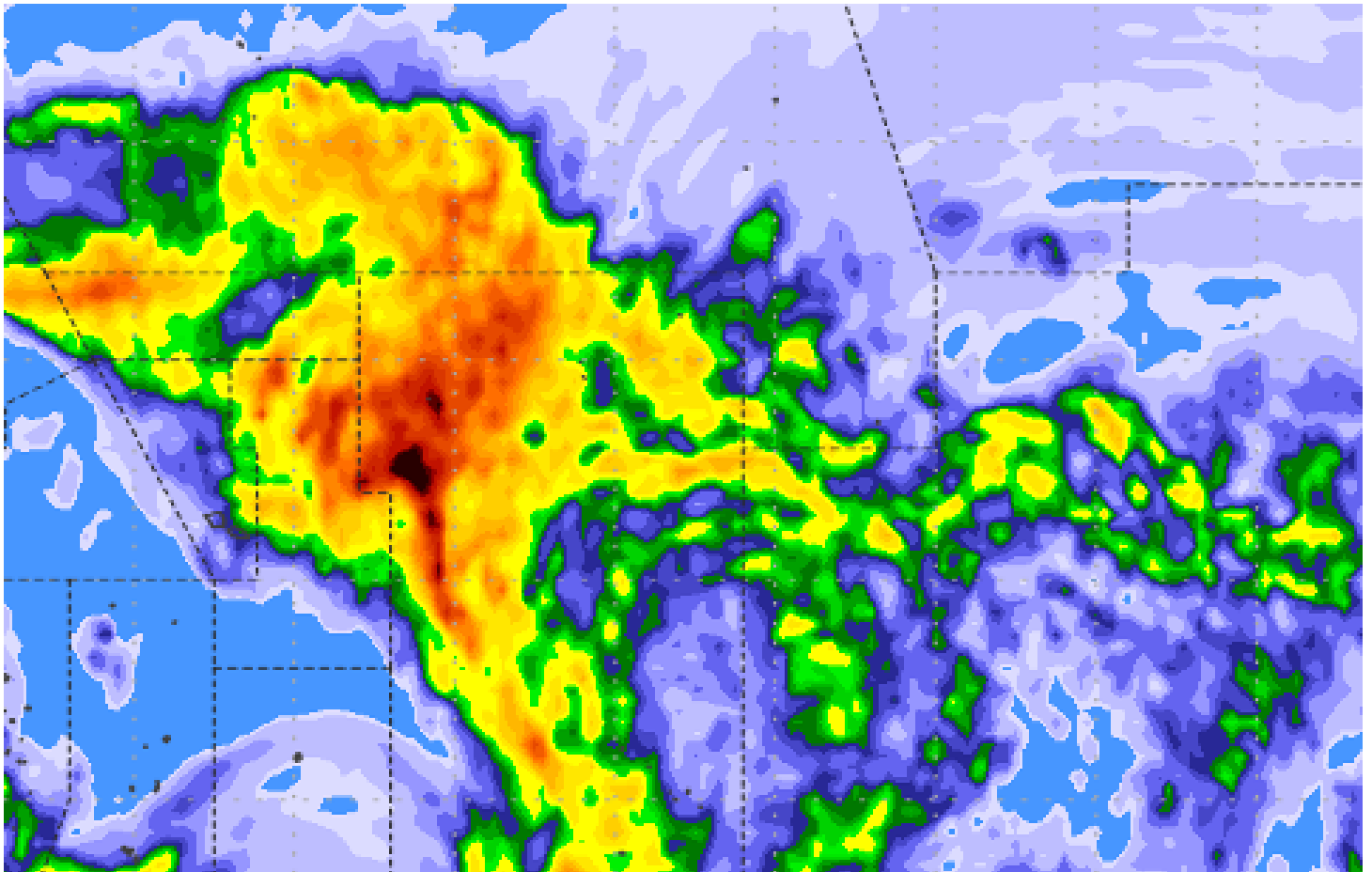
[\(index.php?page=satellite\)](#)

[Satellite Images](#)  [\(index.php?page=satellite\)](#)




(index.php?page=maps)

Maps ↻ (index.php?page=maps)




(index.php?page=loops)

Forcast Models  (index.php?page=loops)



(http://sharaku.eorc.jaxa.jp/GSMaP_NOW/fiji.htm)

JAXA Realtime Rainfall Watch  (http://sharaku.eorc.jaxa.jp/GSMaP_NOW/fiji.htm)



Like us on Facebook (<https://www.facebook.com/pages/Fiji-Meteorological-Service/112621892096909>)



Join us on Twitter (<https://twitter.com/FJMETservice>)



Facebook Photo Gallery (<https://www.facebook.com/pages/Fiji-Meteorological-Service/11262189209...>)

*The Nadi - Tropical Cyclone Centre was officially designated by WMO in June 1995 as a Regional Specialised Meteorological Centre (RSMC) with activity specialization in tropical cyclones tasked to provide "first-level" information in tropical cyclones (ie, basic information covering the tropical cyclones' present and forecast position, movement and intensity) in the South-West Pacific Ocean. The Public and the international media are requested to note that the RSMC-Nadi-Tropical Cyclone Centre is the official source of reliable "first-level" information on tropical cyclones occurring in the South-West Pacific Ocean

Copyright - Please Read before using any material from this site (<index.php?page=copyright>)