

North Darfur Annexes

Annex 1 :

Total expenditure (per day per person)											
Location	Round 1 (Feb 2009)	Round 2 (May 2009)	Round 3 (Aug 2009)	Round 4 (Nov 2009)	Round 5 (Feb 2010)	Round 6 (May 2010)	Round 7 (Aug 2010)	Round 8 (Nov 2010)	Round 9 (Feb 2011)	Round 10 (May 2011)	Round 11 (Nov 2011)
Abu Shouk (camp)	2.3	2.2 (-1%)	2.1 (-5%)	5.4 (154%)	2.1 (-61%)	3 (46%)	3.2 (7%)	3.1 (-3%)	3.2 (2%)	2.4 (-24%)	2.4 (-3%)
Um Marahik (residents)	1.4	1.3 (-7%)	2.4 (87%)	2.3 (-7%)	1.7 (-26%)	1.6 (-8%)	3.6 (133%)	1.8 (-51%)	1.8 (-1%)	1.2 (-30%)	1.6 (32%)
Rwanda (camp)	1.1	0.7 (-36%)	0.7 (0%)	0.7 (-9%)	2 (197%)	1.4 (-27%)	1.9 (34%)	0.9 (-52%)	0.9 (3%)	1.2 (22%)	1.4 (20%)
Marsus1 (residents)									1.4	1.6 (16%)	1.7 (1%)
El Serif (camp)									2.9	2 (-31%)	1.5 (-24%)
Um Keddada (residents)	3.4	3.2 (-7%)	2.8 (-10%)	2.7 (-5%)	2.1 (-22%)	2.4 (14%)	3.3 (37%)	2.1 (-35%)	2.6 (20%)	2.8 (7%)	3 (9%)
Abbasi (camp)	1.5	1.2 (-20%)	1.9 (63%)	1.8 (-5%)	2.1 (11%)	2.6 (27%)	3.1 (21%)	2.7 (-15%)	2.1 (-20%)	2.7 (27%)	2.7 (-1%)
Sayah (residents)	3		3.3	3.7 (12%)	2.9 (-21%)	3.4 (15%)	3.5 (5%)	2.9 (-17%)	2.3 (-21%)	3.6 (57%)	4.5 (24%)
Malha (residents)	3.4	2.7 (-21%)	2.5 (-7%)	3 (18%)	2.1 (-31%)	3.5 (68%)	3.7 (6%)	1.6 (-58%)	1.8 (12%)	2.3 (31%)	2.4 (5%)
Kassab (camp)	2	1.6 (-22%)	1.6 (2%)	1.8 (10%)	1 (-41%)	1.8 (68%)	2.1 (22%)	2.1 (-1%)	2.1 (-2%)	1 (-53%)	2 (103%)
Nena (residents)	1.9	0.8 (-56%)	1.6 (85%)	1.5 (-5%)	1.4 (-1%)	2.4 (64%)	2.2 (-5%)	1 (-53%)	0.9 (-12%)	1 (5%)	1.2 (22%)
Kebkabiya (mixed)	2.6	2.9 (12%)	3.4 (18%)	3.2 (-7%)	4 (24%)	2.4 (-39%)	4.6 (91%)	3.9 (-15%)	4 (3%)	3.5 (-13%)	3.2 (-7%)
Saraf Omra (mixed)	2.7	2.3 (-15%)	2.4 (3%)	4 (70%)	3.5 (-14%)	3.2 (-9%)	4.2 (33%)	5.2 (24%)	3.9 (-25%)	2.7 (-32%)	2 (-25%)
Dagagg (residents)		1.3	1.9 (54%)	2 (3%)	1.9 (-5%)	2.2 (15%)	2.1 (-5%)	2 (-1%)	1.3 (-36%)	1.5 (16%)	1.6 (4%)
Broush (residents)		2.5	2.7 (10%)	3.1 (13%)	2 (-33%)	1.8 (-12%)	3 (67%)	1.8 (-40%)	2.5 (40%)	2.7 (8%)	2.7 (0%)
Goz Laban (residents)		2.2	2.5 (14%)	3 (22%)	2.8 (-6%)	3.4 (19%)	2.9 (-14%)	2.2 (-22%)	1.9 (-13%)	3.4 (76%)	2.9 (-14%)
Shaddad (camp)		1.3	1.9 (50%)	2 (6%)	1.2 (-39%)	1.7 (34%)	1.7 (0%)	1.7 (4%)	2 (15%)	2.3 (16%)	1.4 (-41%)
Frook (residents)			3.2	2 (-37%)	1.4 (-30%)	1.4 (2%)	2 (36%)	1.9 (-2%)	2 (3%)	2.3 (16%)	2.5 (8%)
Umbaro (residents)				3.5	2 (-42%)	1.6 (-21%)		2	2.6 (27%)	2.6 (0%)	2.5 (-5%)

Annex 2 : Food Consumption Over Time

Food consumption score											
Location	Round 1 (Feb 2009)	Round 2 (May 2009)	Round 3 (Aug 2009)	Round 4 (Nov 2009)	Round 5 (Feb 2010)	Round 6 (May 2010)	Round 7 (Aug 2010)	Round 8 (Nov 2010)	Round 9 (Feb 2011)	Round 10 (May 2011)	Round 11 (Nov 2011)
Abu Shouk (camp)	71	45 (-36%)	42 (-7%)	46 (10%)	72 (55%)	62 (-13%)	59 (-5%)	73 (24%)	73 (0%)	69 (-5%)	57 (-17%)
Um Marahik (residents)	33	43 (30%)	54 (27%)	43 (-21%)	33 (-24%)	42 (29%)	51 (23%)	40 (-23%)	40 (1%)	45 (13%)	35 (-23%)
Rwanda (camp)	39	34 (-12%)	39 (16%)	46 (17%)	54 (19%)	41 (-25%)	46 (12%)	36 (-21%)	28 (-22%)	44 (57%)	26 (-41%)
Marsus1 (residents)									48	58 (21%)	47 (-19%)
El Serif (camp)									64	48 (-25%)	48 (-2%)
Um Keddada (residents)	66	67 (2%)	68 (2%)	57 (-17%)	58 (3%)	55 (-6%)	55 (1%)	53 (-4%)	49 (-8%)	58 (18%)	57 (-2%)
Abbasi (camp)	54	53 (-2%)	50 (-6%)	49 (-3%)	53 (9%)	54 (1%)	58 (7%)	53 (-8%)	55 (3%)	51 (-7%)	45 (-12%)
Sayah (residents)	62		66	55 (-17%)	56 (2%)	57 (1%)	48 (-15%)	55 (14%)	53 (-3%)	58 (9%)	54 (-8%)
Malha (residents)	59	61 (5%)	58 (-5%)	52 (-11%)	60 (16%)	61 (1%)	62 (2%)	60 (-3%)	57 (-5%)	60 (5%)	59 (-1%)
Kassab (camp)	53	61 (16%)	57 (-7%)	57 (1%)	42 (-28%)	54 (29%)	54 (0%)	59 (9%)	54 (-9%)	39 (-26%)	49 (25%)
Nena (residents)	47	42 (-12%)	50 (19%)	54 (9%)	58 (7%)	49 (-15%)	38 (-23%)	33 (-14%)	34 (2%)	30 (-11%)	35 (15%)
Kebkabiya (mixed)	63	62 (-1%)	66 (6%)	62 (-5%)	70 (13%)	63 (-11%)	79 (25%)	63 (-20%)	69 (9%)	65 (-5%)	64 (-3%)
Saraf Omra (mixed)	60	55 (-8%)	57 (2%)	64 (13%)	66 (3%)	74 (11%)	66 (-10%)	74 (12%)	72 (-3%)	56 (-22%)	49 (-12%)
Dagagg (residents)		45	51 (13%)	41 (-20%)	36 (-12%)	48 (33%)	40 (-17%)	42 (5%)	45 (7%)	47 (4%)	45 (-3%)
Broush (residents)		62	60 (-4%)	57 (-4%)	48 (-16%)	41 (-15%)	57 (39%)	56 (-2%)	54 (-4%)	49 (-8%)	57 (15%)
Goz Laban (residents)		62	65 (5%)	58 (-11%)	58 (0%)	61 (6%)	52 (-15%)	54 (5%)	57 (5%)	49 (-15%)	40 (-17%)
Shaddad (camp)		56	53 (-6%)	62 (18%)	47 (-25%)	43 (-8%)	43 (0%)	50 (16%)	55 (10%)	55 (1%)	50 (-10%)
Frook (residents)			60	68 (14%)	41 (-40%)	44 (7%)	50 (15%)	60 (18%)	47 (-22%)	57 (23%)	45 (-21%)
Umbaro (residents)				64	65 (0%)	52 (-20%)		65	55 (-15%)	57 (3%)	56 (-1%)

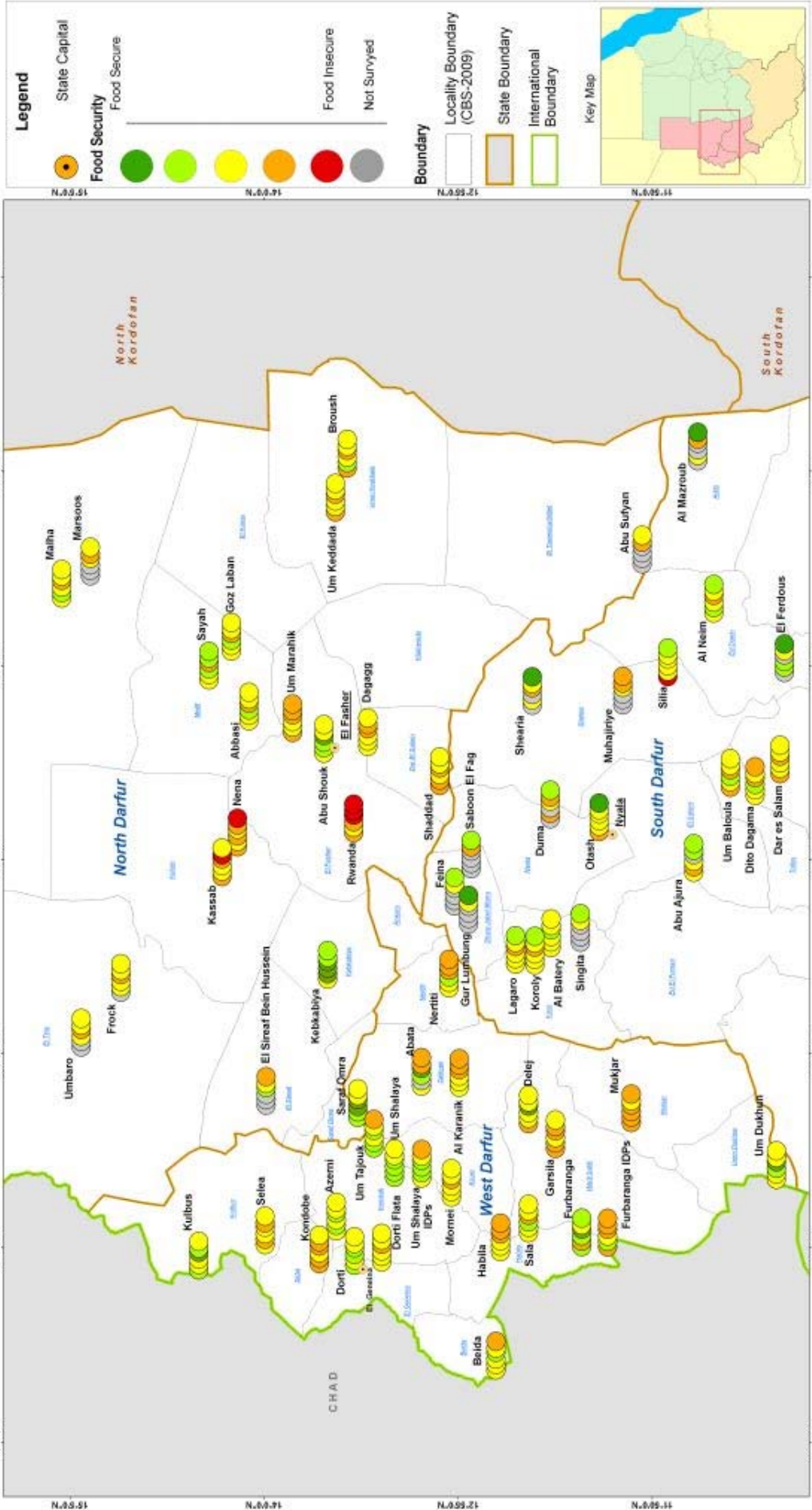
ANNEX 3: Relative Expenditure on Food

Proportion of expenditures spent on food											
Location	Round 1 (Feb 2009)	Round 2 (May 2009)	Round 3 (Aug 2009)	Round 4 (Nov 2009)	Round 5 (Feb 2010)	Round 6 (May 2010)	Round 7 (Aug 2010)	Round 8 (Nov 2010)	Round 9 (Feb 2011)	Round 10 (May 2011)	Round 11 (Nov 2011)
Abu Shouk (camp)	65%	59% (-10%)	46% (-21%)	37% (-19%)	68% (80%)	54% (-21%)	55% (3%)	59% (7%)	53% (-10%)	63% (18%)	66% (5%)
Um Marahik (residents)	60%	76% (28%)	45% (-41%)	55% (22%)	61% (13%)	65% (6%)	59% (-9%)	54% (-8%)	54% (-1%)	75% (41%)	71% (-6%)
Rwanda (camp)	63%	59% (-5%)	65% (9%)	62% (-5%)	74% (20%)	75% (1%)	59% (-21%)	71% (20%)	79% (11%)	91% (16%)	84% (-8%)
Marsus1 (residents)									80%	83% (3%)	63% (-24%)
El Serif (camp)									56%	62% (11%)	77% (23%)
Um Keddada (residents)	65%	66% (2%)	57% (-14%)	60% (6%)	67% (12%)	76% (13%)	55% (-28%)	64% (16%)	67% (5%)	65% (-3%)	72% (11%)
Abbasi (camp)	63%	59% (-5%)	51% (-15%)	54% (6%)	59% (10%)	65% (9%)	59% (-9%)	56% (-5%)	58% (5%)	64% (11%)	56% (-13%)
Sayah (residents)	58%		46%	57% (24%)	57% (-1%)	64% (13%)	63% (-1%)	54% (-15%)	59% (9%)	57% (-3%)	55% (-3%)
Malha (residents)	63%	64% (1%)	58% (-9%)	57% (-1%)	60% (4%)	64% (7%)	54% (-16%)	66% (23%)	72% (9%)	78% (8%)	66% (-16%)
Kassab (camp)	64%	71% (12%)	67% (-6%)	65% (-4%)	60% (-7%)	76% (26%)	67% (-12%)	68% (2%)	60% (-11%)	84% (38%)	74% (-12%)
Nena (residents)	72%	73% (1%)	62% (-15%)	67% (8%)	65% (-4%)	69% (7%)	55% (-20%)	60% (9%)	61% (2%)	67% (10%)	83% (24%)
Kebkabiya (mixed)	59%	61% (3%)	51% (-17%)	57% (13%)	55% (-4%)	57% (4%)	52% (-8%)	50% (-3%)	55% (9%)	61% (12%)	63% (3%)
Saraf Omra (mixed)	52%	63% (20%)	64% (2%)	50% (-21%)	49% (-2%)	58% (18%)	48% (-17%)	46% (-6%)	49% (8%)	61% (24%)	70% (14%)
Dagagg (residents)		72%	54% (-25%)	51% (-6%)	52% (2%)	54% (4%)	57% (7%)	50% (-13%)	63% (26%)	73% (16%)	67% (-8%)
Broush (residents)		66%	62% (-7%)	67% (9%)	71% (5%)	74% (4%)	53% (-28%)	67% (26%)	74% (10%)	72% (-3%)	74% (3%)
Goz Laban (residents)		56%	54% (-3%)	59% (9%)	64% (7%)	62% (-2%)	60% (-3%)	51% (-15%)	59% (14%)	66% (12%)	53% (-19%)
Shaddad (camp)		70%	50% (-28%)	60% (20%)	67% (11%)	74% (11%)	67% (-9%)	70% (4%)	60% (-14%)	67% (11%)	65% (-3%)
Frock (residents)			33%	41% (25%)	50% (20%)	45% (-9%)	56% (24%)	66% (19%)	60% (-10%)	64% (7%)	64% (1%)
Umbaro (residents)				43%	61% (42%)	62% (1%)		65%	64% (-1%)	74% (16%)	72% (-4%)

ANNEX 4: Darfur FSMS Map



Darfur Food Security Monitoring System Results November 2011



Boundaries shown on this map do not imply official endorsement or acceptance by the United Nations World Food Programme. The map is for planning purposes only. WFP can not guarantee that the map product is error free and therefore we accept no liability or consequential and indirect damages arising from use of this map product.



Data Sources:
 WFP (UN), IFPP Sudan
 Sudan Settlements: Sudan Interagency Mapping (SIM)
 Sudan Boundaries: Sudan Interagency Mapping (SIM)