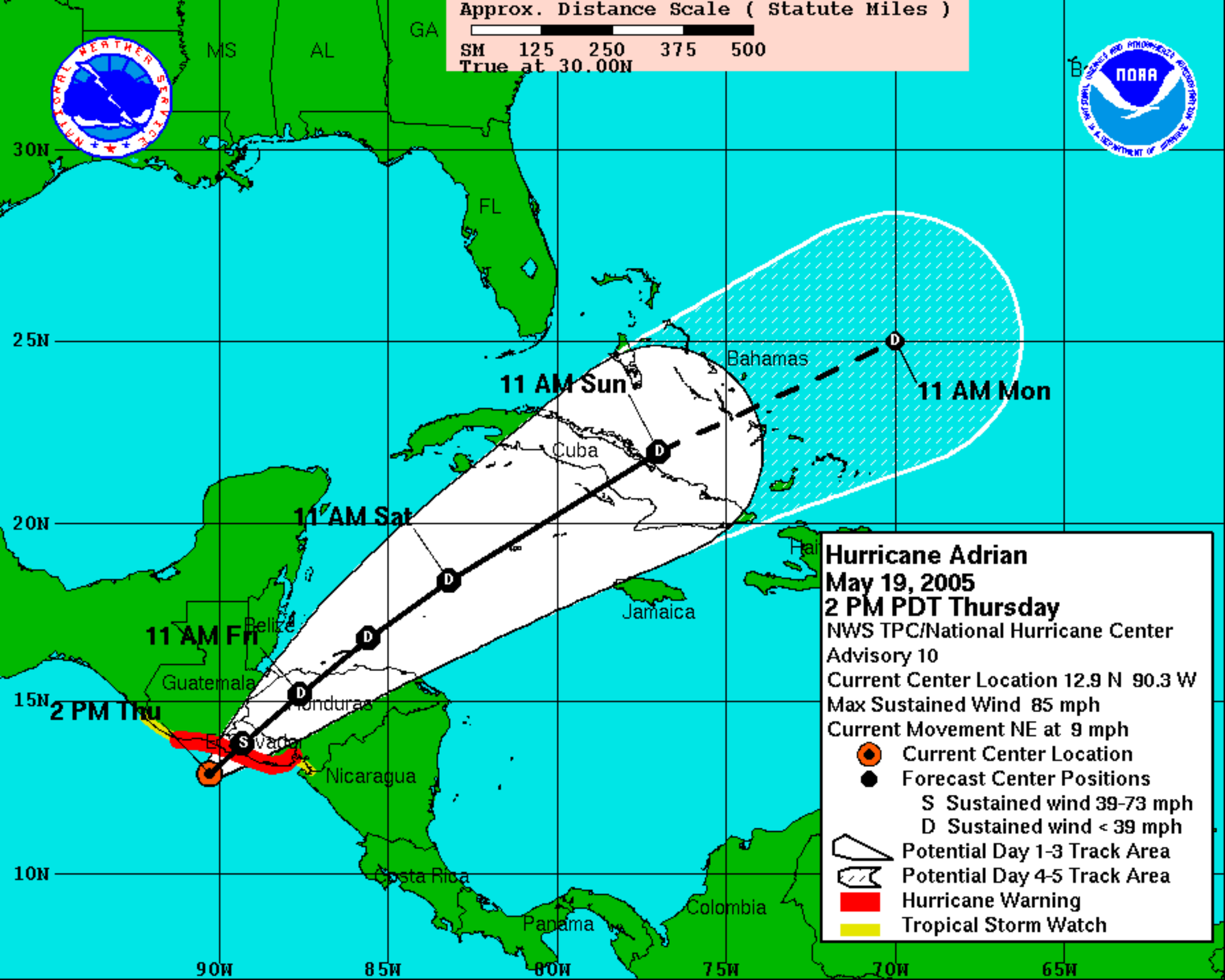
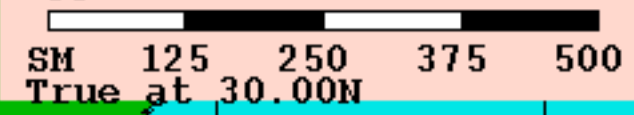


Approx. Distance Scale ( Statute Miles )



**Hurricane Adrian**  
**May 19, 2005**  
**2 PM PDT Thursday**  
 NWS TPC/National Hurricane Center  
 Advisory 10  
 Current Center Location 12.9 N 90.3 W  
 Max Sustained Wind 85 mph  
 Current Movement NE at 9 mph

- Current Center Location
- Forecast Center Positions
  - S Sustained wind 39-73 mph
  - D Sustained wind < 39 mph
- Potential Day 1-3 Track Area
- Potential Day 4-5 Track Area
- Hurricane Warning
- Tropical Storm Watch

30N  
25N  
20N  
15N  
10N

90W 85W 80W 75W 70W 65W

11 AM Fri

2 PM Thu

11 AM Sat

11 AM Sun

11 AM Mon

Guatemala

Honduras

Nicaragua

Costa Rica

Panama

Colombia

Jamaica

Cuba

Bahamas

MS

AL

GA

FL