

EMERGENCY EVENT TRACKING

Data collection: 25 July 2021

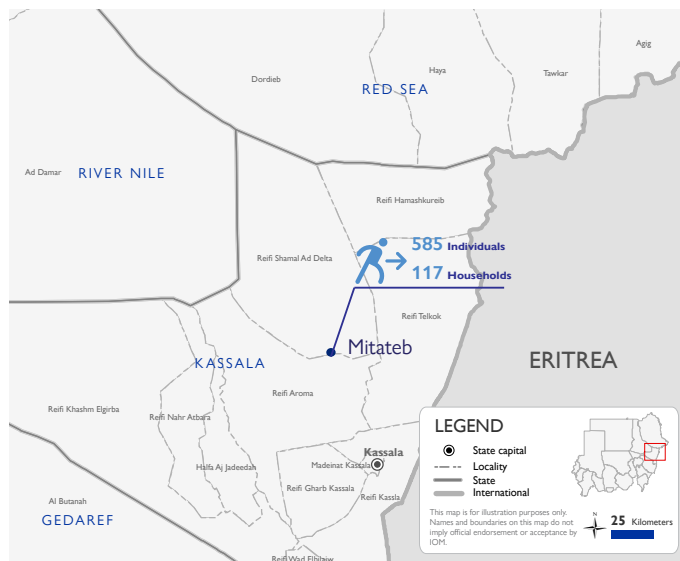


The DTM Emergency Event Tracking (EET) is deployed to track sudden displacement and population movements, provide more frequent updates on the scale of displacement and quantify the affected population when needed. As a subcomponent of the new Mobility Tracking methodology in Sudan (Round One), and activated on a need basis, EET utilises a broad network of key informants to capture best estimates of the affected population presence per location – a useful tool for humanitarian response planning and design.

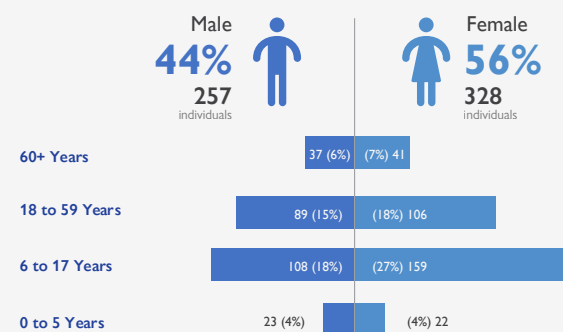
Event Overview



DTM teams activated EET to monitor the situation of individuals affected by heavy rains and flooding in Reifi Shamal Ad Delta locality, Kassala on 24 July 2021. The First EET update estimates a total number of 585 individuals (117 households) were affected in Msaga 16 (25%) and Msaga 17 (75%) in Mitateb village in Reifi Shamal Ad Delta, Kassala. All affected individuals have had their houses completely destroyed. During the day, 145 individuals (25%) shelter in the local school and in the evening return to temporary shelters made from local materials, 440 individuals (75%) stay with relatives in the area. Field teams indicate that there has been no reported displacement. There have been no reported deaths or injuries, and no individuals have reported lost goods, cattle, and/or livestock. All displaced individuals are Sudanese nationals. DTM teams identified at least 305 cases of additional vulnerabilities in need of assistance and support. Based on a ranking scale, the three priority needs across the caseload are emergency shelter, food, and non-food items.



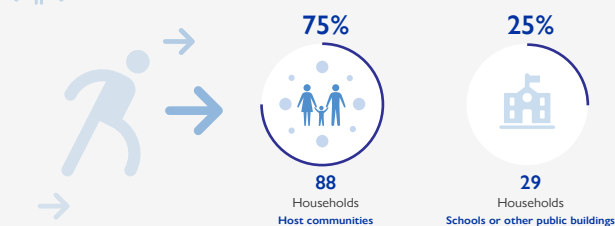
Demographics



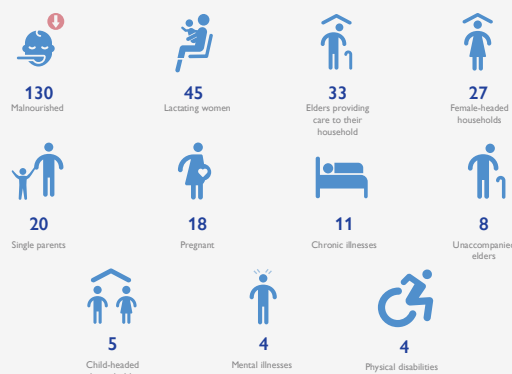
Return Intention

Data collected through the return intention indicator suggests that all IDPs (100%) intend to remain in the same place.

Shelter Indicator



Vulnerabilities



IOM DISCLAIMER

The opinions expressed in the report are those of the authors and do not necessarily reflect the views of the International Organization for Migration (IOM). The designations employed and the presentation of material throughout the report do not imply the expression of any opinion whatsoever on the part of IOM concerning the legal status of any country, territory, city or area, or of its authorities, or concerning its frontiers or boundaries.

IOM is committed to the principle that humane and orderly migration benefits migrants and society. As an intergovernmental organization, IOM acts with its partners in the international community to: assist in the meeting of operational challenges of migration; advance understanding of migration issues; encourage social and economic development through migration; and uphold the human dignity and well-being of migrants.