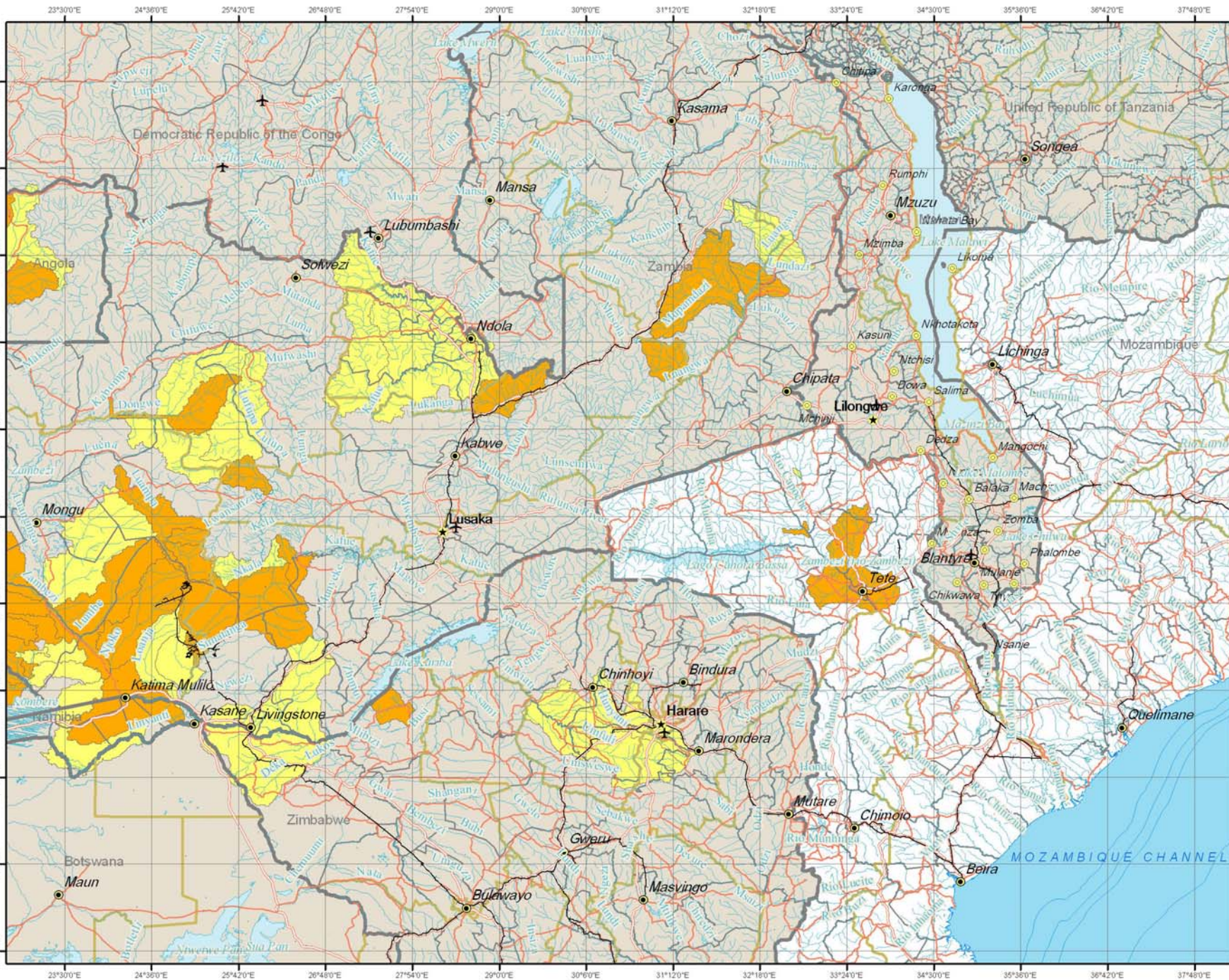


# Mozambique - Flood alert situation as of December 18th, 2008

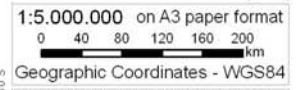
Publication date: 19/12/2008



## Legend

- |                                     |                      |
|-------------------------------------|----------------------|
| <b>Populated places - Perennial</b> | <b>Adm. boundary</b> |
| ★ 1st order capital                 | — Coastline          |
| ● 2nd order capital                 | — International      |
| ○ Other capital                     | — 1st order          |
| ○ Town                              | — 2nd order          |
| ○ Settlement                        | — 3rd order          |
| ✈ Airports                          | ○ Built-up Area      |
| — Railroad                          | ○ Inland Water       |
| — Highway                           | <b>Basins</b>        |
| — Primary                           | ○ Criticality        |
| — Secondary                         | ○ Low                |
| — Tertiary                          | ○ Medium             |
| — Local/ Urban                      | ○ High               |

Criticality levels are based on cumulated rainfalls according to the specific analysis time period for each hydrographical basin.



Source for Vector Map level 0 (VMAPO) datasets was the United States National Imagery and Mapping Agency (NIMA) images are available in the LAADS archive through FTP on ftp://landsip.nascom.nasa.gov/ Names and boundaries on this map do not imply acceptance or recognition by the World Food Programme or by the United Nations. Facts and figures in this map are accurate and up to date to the best of our knowledge at the time of writing but subject to change at any time. The World Food Programme makes no warranty or representation as to the reliability or accuracy of the data contained herein. This map is for planning purposes only. © United Nations World Food Programme 2007. All rights reserved.

**Produced by ITHACA in cooperation with WFP**