

Elevation Map of Phuket Island

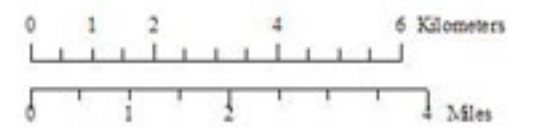
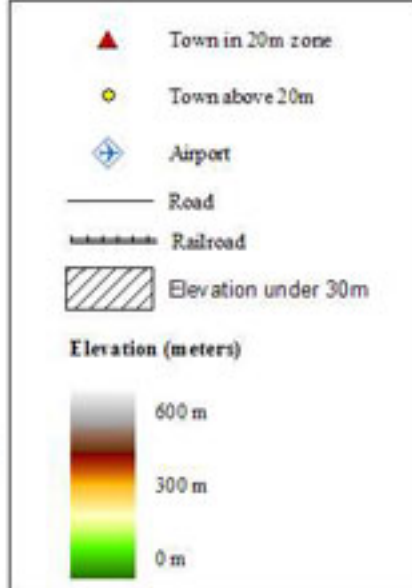
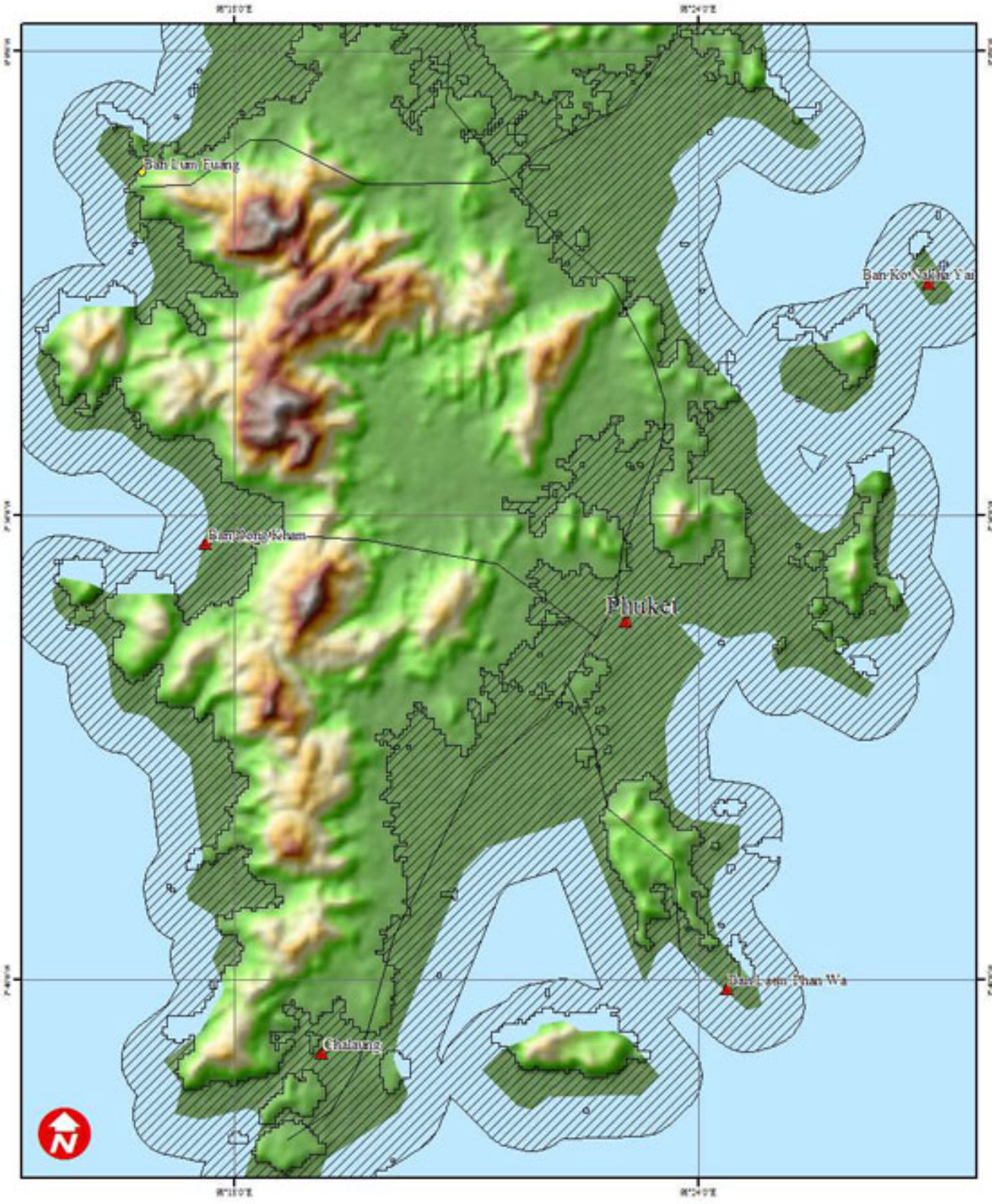
29 December 2004

This map illustrates coastal areas under 20 meters in elevation, as well as towns which fall within this zone. The 20m value was selected to account for the margin of vertical error with the SRTM dataset (~1.5 meters). The 20m coastal zone is not a direct indication of areas affected by the 26 December 04 Tsunami—only those areas which may have suffered damage.

Disaster Type: Tsunami
 Disaster Date: 26 December 2004
 Data Source: GLCF, JPL, USGS, Global Insight
 Elevation Data: SRTM (3 arc second)
 Resolution: 90m horizontal/16m vertical
 Scale: 1:100,000 for A3 Prints
 Datum: WGS-84
 Projection: Geographic Coordinates
 Map Produced: 29 December 2004

This map was produced for the UNOSAT project headed by UNITAR and executed by UNOPS. UNOSAT is a UN-private consortium providing satellite imagery and related geographic information to UN humanitarian and development agencies, and their implementing partners. See www.unosat.org for additional information.

The International Charter on Space and Major Disasters aims at providing a unified system of space data acquisition and delivery to those affected by natural or man-made disasters through authorized users. Since 1 July 2003 the Charter is available to support the UN with satellite imagery. Please contact the UN Office for Outer Space Affairs for further information (ooaa@unvienna.org).



The depiction and use of boundaries, geographic names and related data shown here are not warranted to be error-free nor do they necessarily imply official endorsement or acceptance by the United Nations.

