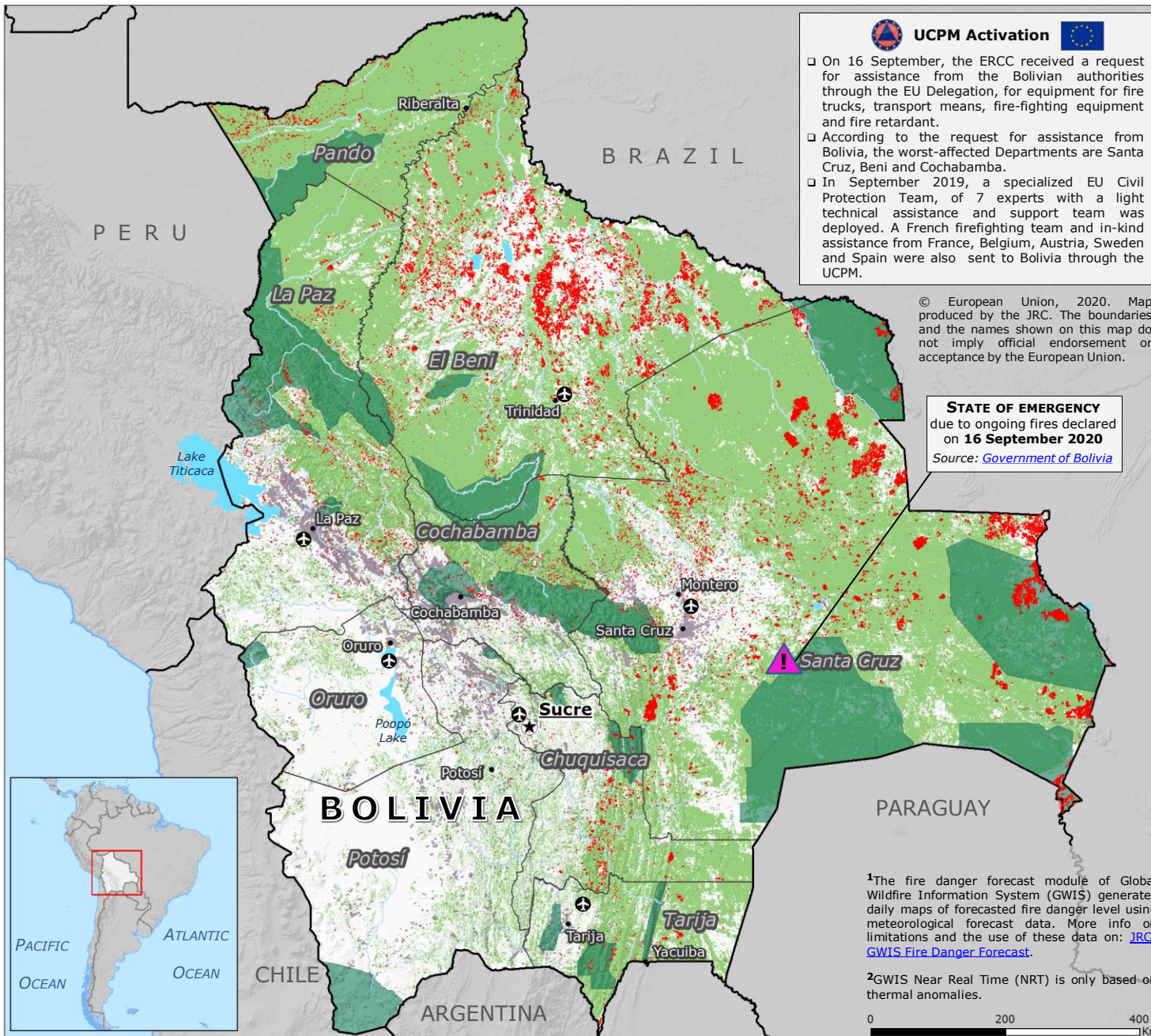


Bolivia | Forest Fires

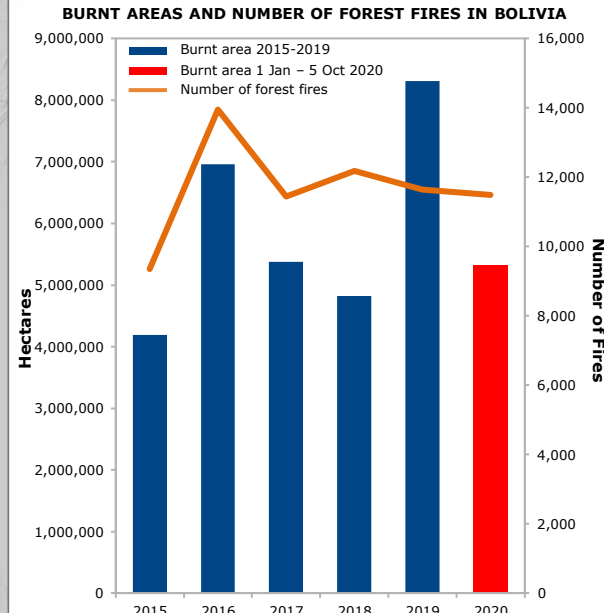
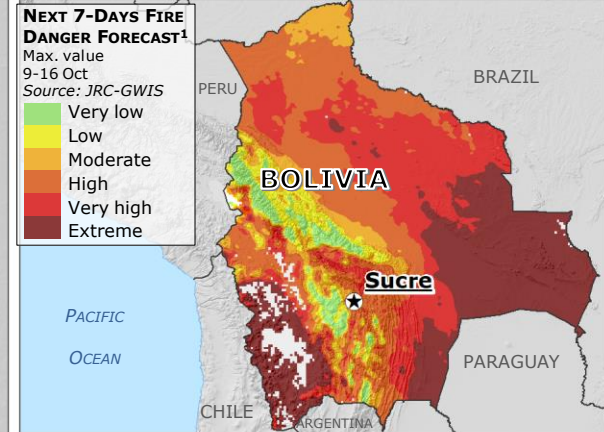


UCPM Activation

- On 16 September, the ERCC received a request for assistance from the Bolivian authorities through the EU Delegation, for equipment for fire trucks, transport means, fire-fighting equipment and fire retardant.
- According to the request for assistance from Bolivia, the worst-affected Departments are Santa Cruz, Beni and Cochabamba.
- In September 2019, a specialized EU Civil Protection Team, of 7 experts with a light technical assistance and support team was deployed. A French firefighting team and in-kind assistance from France, Belgium, Austria, Sweden and Spain were also sent to Bolivia through the UCPM.

© European Union, 2020. Map produced by the JRC. The boundaries and the names shown on this map do not imply official endorsement or acceptance by the European Union.

STATE OF EMERGENCY
due to ongoing fires declared on **16 September 2020**
Source: [Government of Bolivia](#)



GLOBAL WILDFIRE INFORMATION SYSTEM (GWIS)

NEAR REAL TIME² DETECTION

- Burnt areas 1 Jan - 5 Oct 2020
- Forests Source: [FAO](#)
- Protected areas Sources: [GeoBolivia](#), [SERNAP Bolivia](#)
- Built-up areas Source: [JRC-GHSL](#)
- Department border
- Country border
- Main airport

¹The fire danger forecast module of Global Wildfire Information System (GWIS) generates daily maps of forecasted fire danger level using meteorological forecast data. More info on limitations and the use of these data on: [JRC-GWIS Fire Danger Forecast](#).

²GWIS Near Real Time (NRT) is only based on thermal anomalies.

