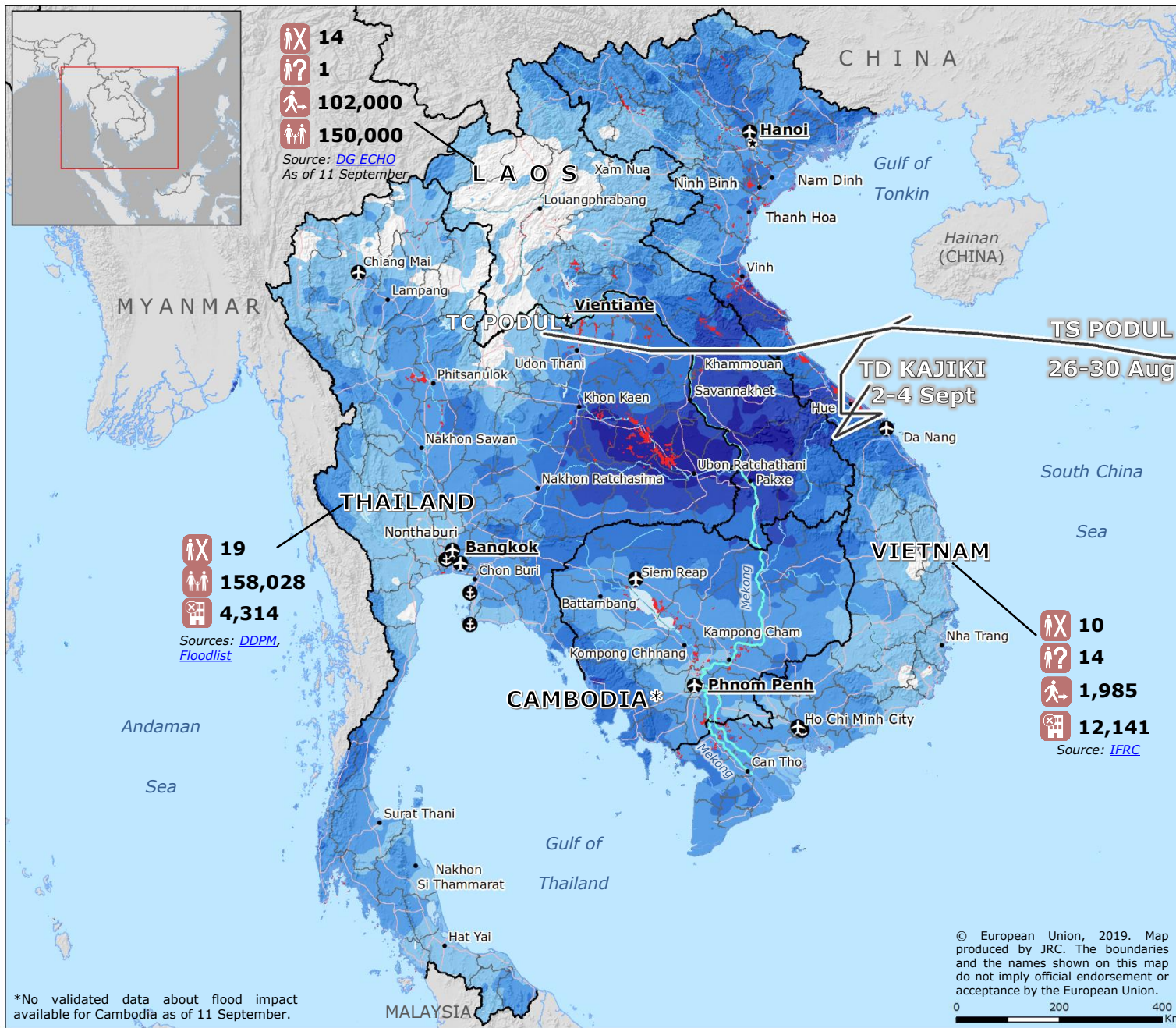


# Southeast Asia | Floods



**PAST TROPICAL STORM (TS)/TROPICAL DEPRESSION (TD)**  
Source: GDACS, JTWC

- Track

**RAINFALL ACCUMULATION**  
27 Aug – 10 Sept  
Source: NASA-GPM

- > 600 mm
- 400-600 mm
- 200-400 mm
- 100-200 mm
- 50-100 mm

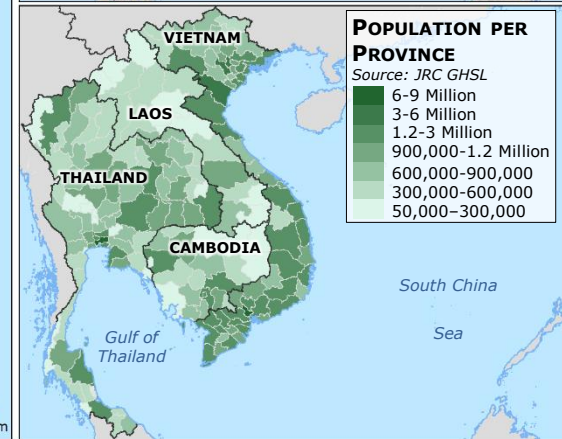
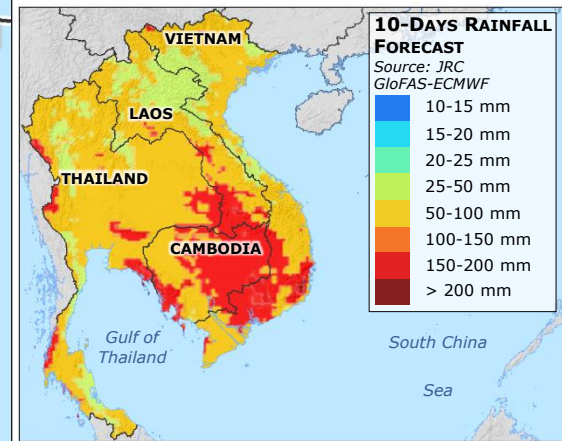
**FLOOD DETECTION**  
27 Aug – 10 Sept  
Source: NASA-MODIS

- Flooded area

**Legend:**

- Fatalities
- Missing people
- Displaced people
- Affected families
- Damaged buildings
- Main Port
- Main Airport

Sources: DG ECHO, IFRC, DDPM, Floodlist



\*No validated data about flood impact available for Cambodia as of 11 September.