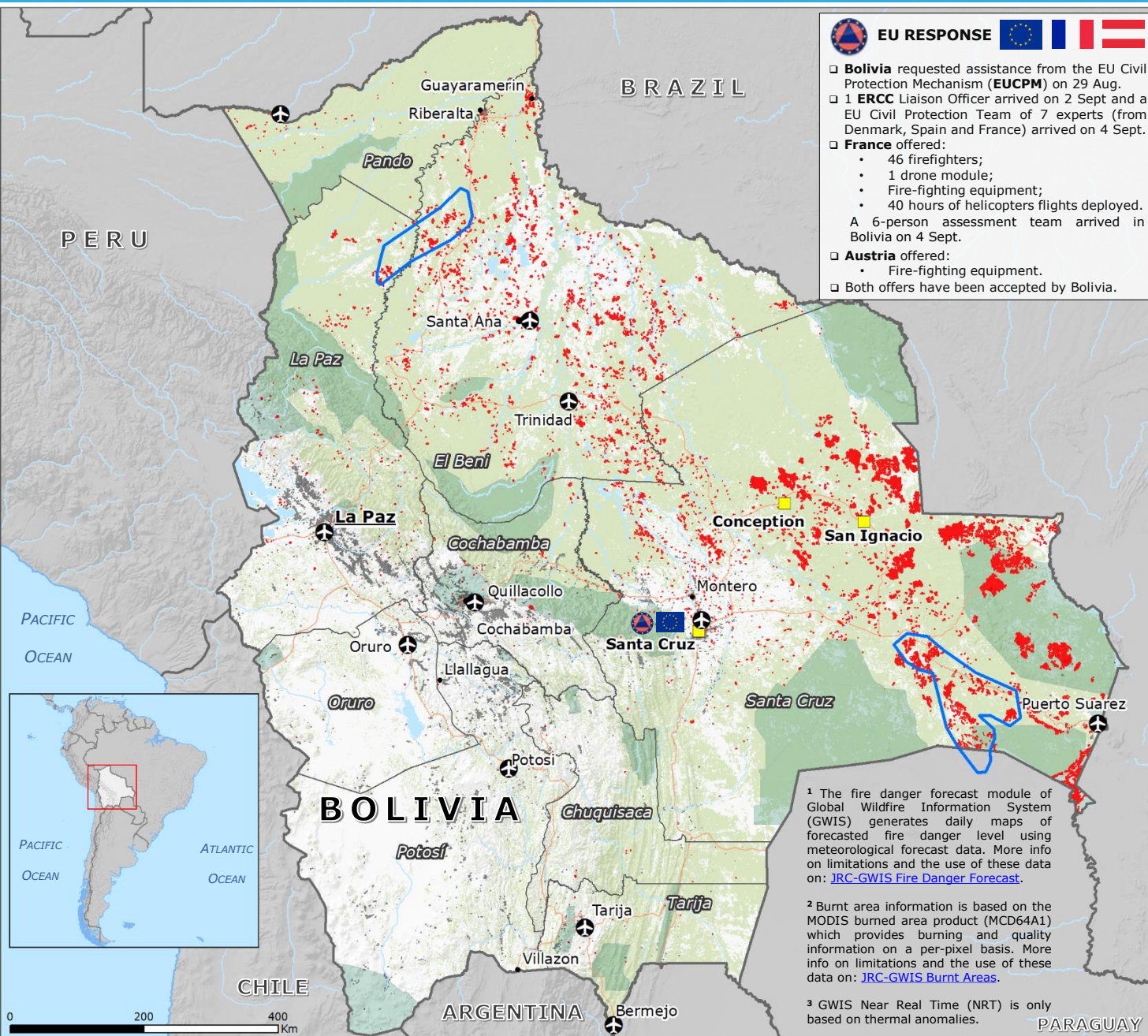
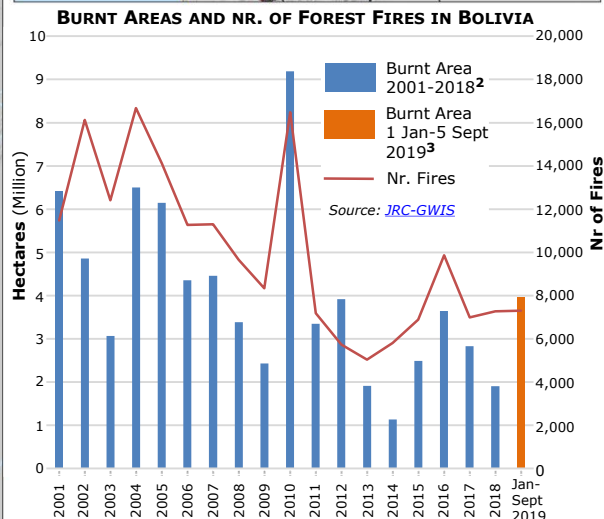
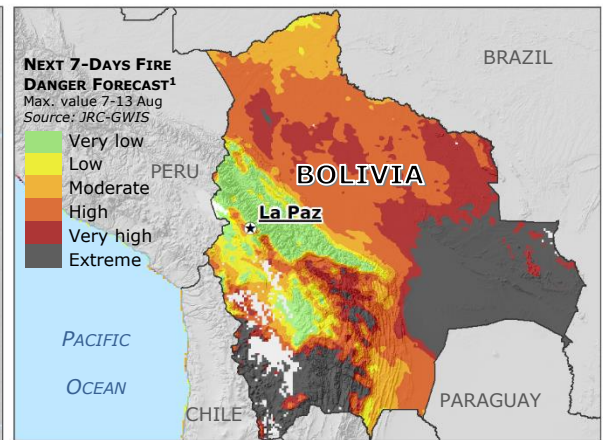


Bolivia | Forest Fires



EU RESPONSE

- Bolivia requested assistance from the EU Civil Protection Mechanism (EUCPM) on 29 Aug.
- 1 ERCC Liaison Officer arrived on 2 Sept and a EU Civil Protection Team of 7 experts (from Denmark, Spain and France) arrived on 4 Sept.
- France offered:
 - 46 firefighters;
 - 1 drone module;
 - Fire-fighting equipment;
 - 40 hours of helicopters flights deployed.
 A 6-person assessment team arrived in Bolivia on 4 Sept.
- Austria offered:
 - Fire-fighting equipment.
- Both offers have been accepted by Bolivia.



¹ The fire danger forecast module of Global Wildfire Information System (GWIS) generates daily maps of forecasted fire danger level using meteorological forecast data. More info on limitations and the use of these data on: [JRC-GWIS Fire Danger Forecast](#).

² Burnt area information is based on the MODIS burned area product (MCD64A1) which provides burning and quality information on a per-pixel basis. More info on limitations and the use of these data on: [JRC-GWIS Burnt Areas](#).

³ GWIS Near Real Time (NRT) is only based on thermal anomalies.

GLOBAL WILDFIRE INFORMATION SYSTEM (GWIS) Forests
 Source: FAO

NEAR REAL TIME³ DETECTION

- Burnt areas 1 Aug - 5 Sept
- Protected areas
Sources: GeoBolivia, SERNAP Bolivia
- Built-up areas
Source: JRC-GHSL

COPERNICUS EMSR383
 Activation date 24 Aug

- Area of Interest (AoI)
- Coordination hub
- Main airport
- Main roads
- Department boundary