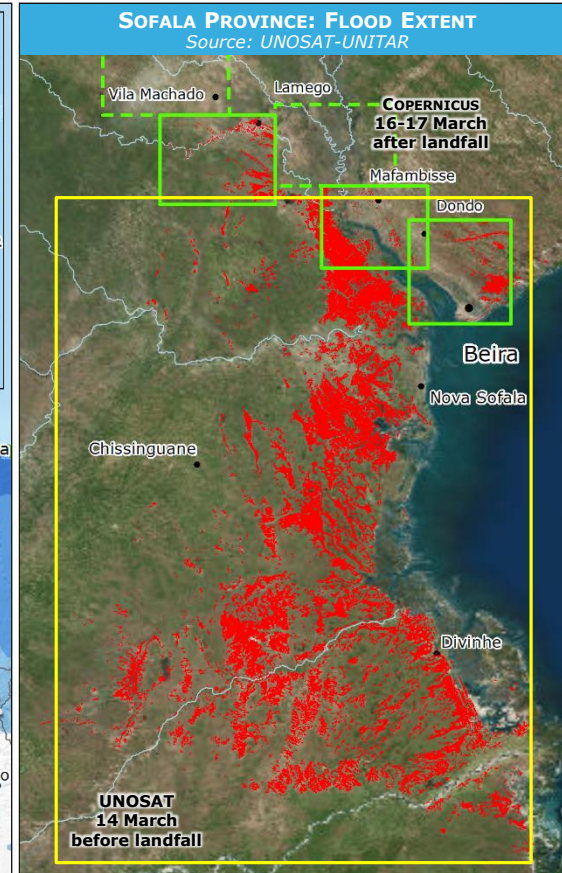
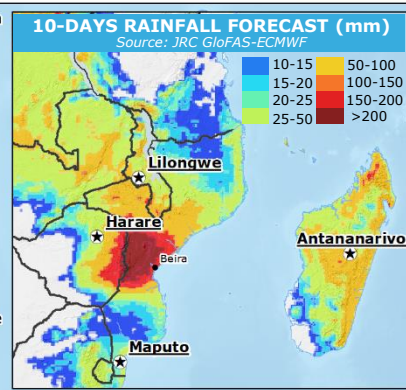
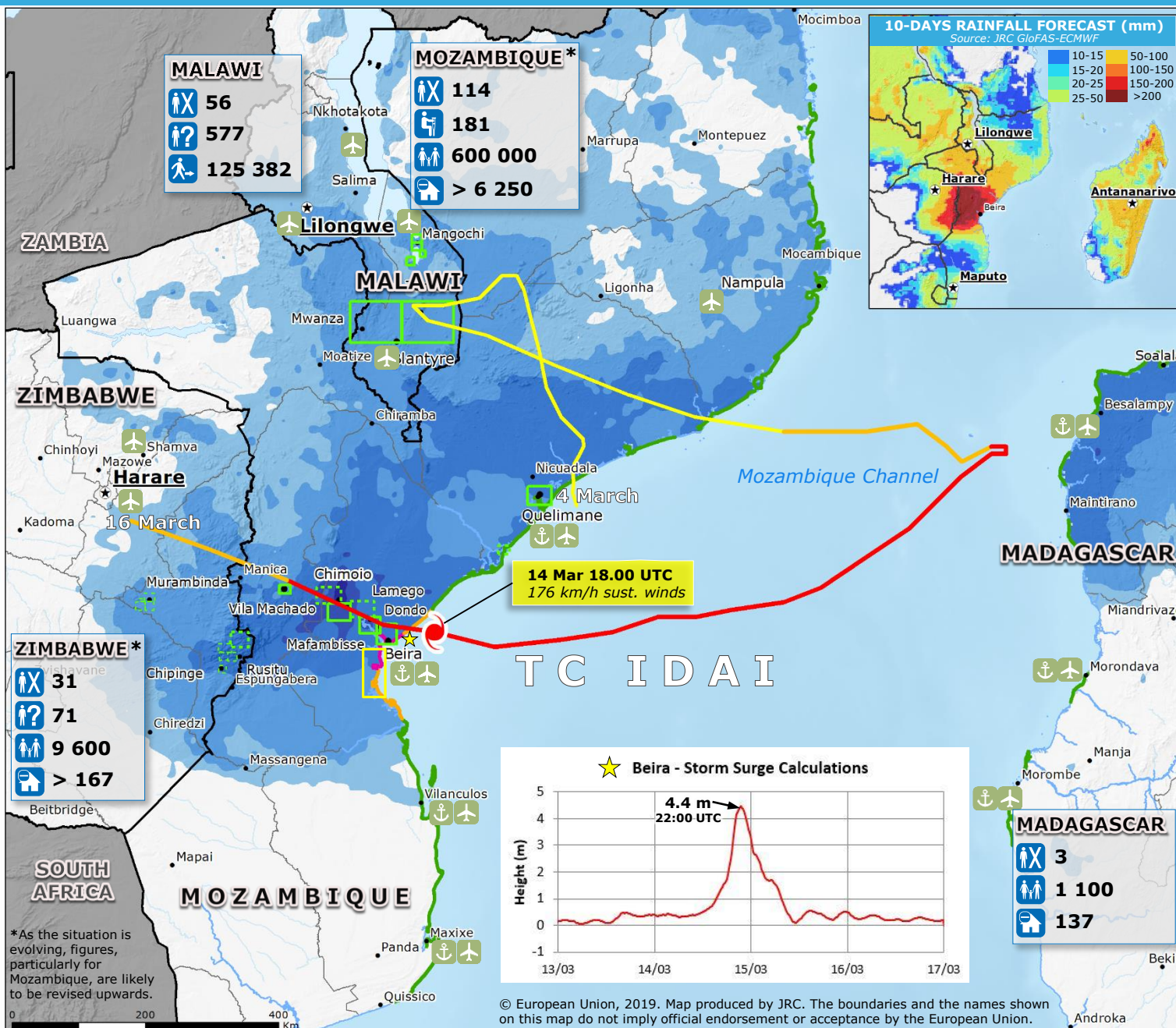


# Tropical Cyclone IDAI Impact Overview



**TROPICAL CYCLONES (TC) TRACK**

- > 118 km/h
- 63 - 118 km/h
- < 63 km/h

**STORM SURGE**  
Source: JRC, Atmospheric HWRF

- 0.2 - 1 m
- 1 - 3 m
- 3 - 4.5 m

**PAST 2-WEEKS RAINFALL ACCUMULATION**  
Source: NASA-GPM

- 50-100 mm
- 100-200 mm
- 200-400 mm
- 400-600 mm
- > 600 mm

**FLOOD EXTENT SATELLITE DETECTION**

**COPERNICUS Activation**  
EMSR347 Malawi, EMSR348 Mozambique, EMSR349 Zimbabwe

- Flooded area
- Area of interest
- Completed
- Planned

**UNOSAT-UNITAR Activation Mozambique**

- Flooded area
- Area of interest

**Legend:**

- Fatalities
- Injuries
- Missing people
- Affected people
- Displaced people
- Damaged houses
- Port
- Airport
- Administrative division boundary