



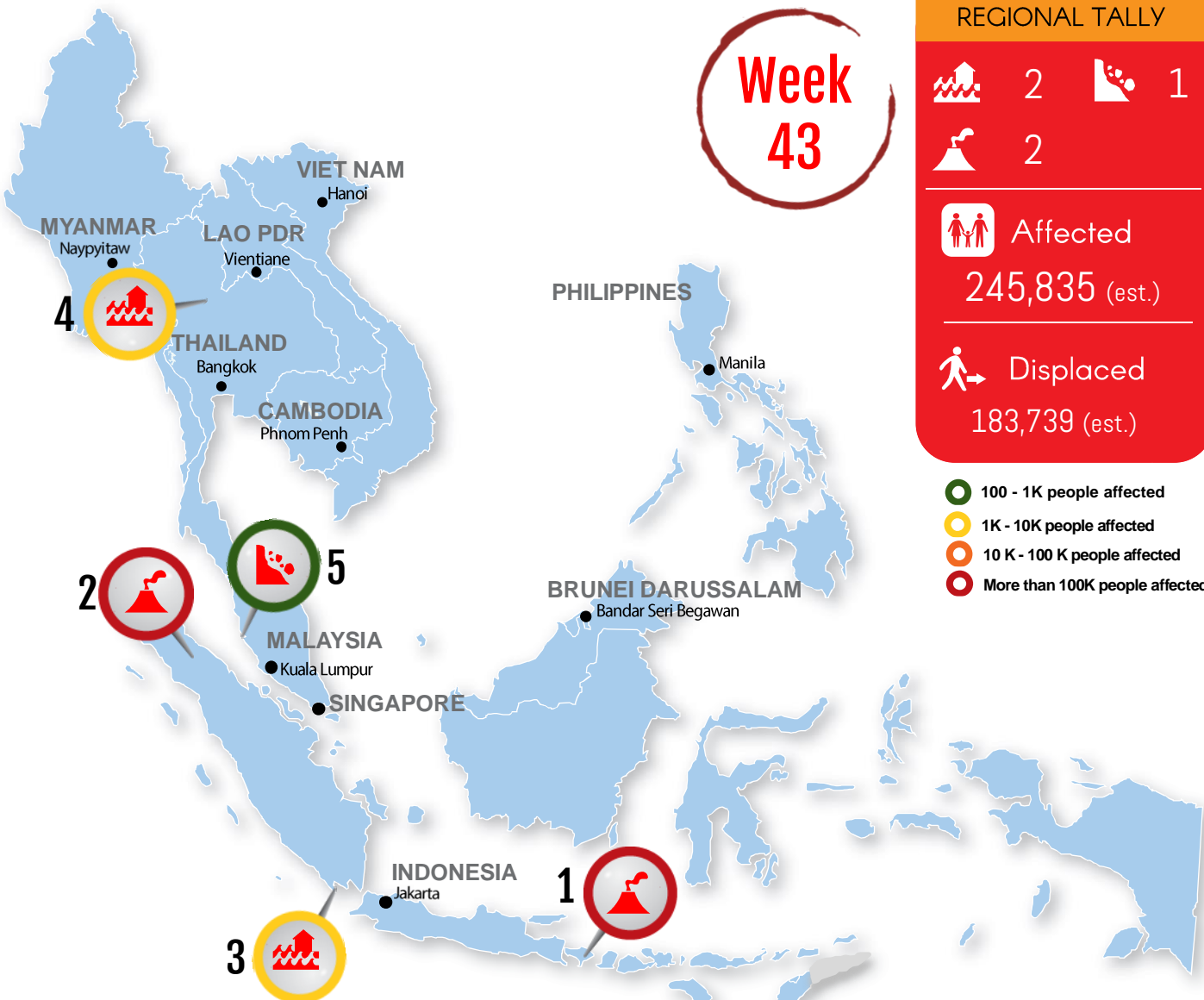
WEEKLY DISASTER UPDATE

23 – 29
OCT | 2017



ONE ASEAN ONE RESPONSE

Week 43



REGIONAL TALLY

2 1

2

Affected
245,835 (est.)

Displaced
183,739 (est.)

- 100 - 1K people affected
- 1K - 10K people affected
- 10 K - 100 K people affected
- More than 100K people affected

S/N	Date	Country	Disaster Log & Affected Provinces	Potential considerations for response
1	22 Sep – now (ongoing)	Indonesia	Status revision: Warning (Level IV) to Watch (Level III) for Mt. Agung, Bali Province http://adinet.ahacentre.org/reports/view/970	<ul style="list-style-type: none"> Operation planning for IDPs potential return to villages/towns Initiate community-preparedness measures, government and business continuity, and contingency planning for future volcanic activities
2	Ongoing	Indonesia	Latest eruption and continuous "Warning (Level IV) status" for Mount Sinabung, North Sumatra Province http://adinet.ahacentre.org/reports/view/212	<ul style="list-style-type: none"> Acceleration for evacuees relocation to permanent dwellings Assistance for livelihood and economic recovery Prevention for respiratory ailment and diseases
3	26 October	Indonesia	Flash flood in Tanggamus Regency, Lampung Province http://adinet.ahacentre.org/reports/view/983	<ul style="list-style-type: none"> Prevention of water-borne diseases Address potential gaps on water, hygiene and sanitation (WASH)
4	Ongoing	Thailand	Flood in Lop Buri, Ang Thong, Ayutthaya, Nakhon Sawan, Chai Nat, Tak, Phichit and Uthai Thani provinces http://adinet.ahacentre.org/reports/view/978	<ul style="list-style-type: none"> Emergency response to adjust and ensure resumption following disruption of social and economic activities, agriculture/fishing activities and transportation access
5	21-25 October	Malaysia	Landslide in Tanjung Bungah, Penang http://adinet.ahacentre.org/reports/view/973	<ul style="list-style-type: none"> Disruption of transportation access Integrated damage and loss assessment aligned with industrial safety procedure review

SOURCE
Detailed information of each disaster and emergency situation are available at: <http://adinet.ahacentre.org/reports>

Basemap is from global administrative area. Information is generated from various sources including National Disaster Management Offices (NDMOs) of ASEAN member states, international organization and news agencies.

DISCLAIMER
The AHA Centre was established in November 2011 by the Association of South East Asian National (ASEAN) to facilitate cooperation and coordination among the Parties, relevant agencies of the United Nations and international organisations in disaster management and humanitarian assistance.

This update consists of significant natural disaster events that occur in ASEAN Member States, including Brunei Darussalam, Cambodia, Indonesia, Lao PDR,

Malaysia, Myanmar, Philippines, Singapore, Thailand and Viet Nam.

The disasters recorded include Drought, Flood, Earthquake, Tsunami, Volcano, Wind, Landslide and Storm.

The use of boundaries, geographic names, related information and potential considerations for response are for reference, not warranted to be error free or implying official endorsement from ASEAN Member States.