



ONE ASEAN
ONE RESPONSE

WEEKLY DISASTER UPDATE

Week 25
21 – 27 June 2021

- ahacentre.org
- ahacentre
- @ahacentre
- @ahacentre

The AHA Centre, GRAHA BNPB 13th floor,
Jl. Raya Pramuka Kav. 38, East Jakarta 13120 Indonesia

SOURCES

ASEAN Disaster Monitoring & Response System (DMRS);
ASEAN Specialised Meteorological Centre (ASMC); Joint
Typhoon Warning Centre (JTWC)

Indonesia: BNPB, PVMBG;
Philippines: NDRRMC, PHIVOLCS;
Thailand: DDPM

Various news agencies

DISCLAIMER

The AHA Centre was established in November 2011 by the
Association of Southeast Asian Nations (ASEAN) Member
States to facilitate cooperation and coordination among
Member States, relevant agencies of the United Nations
and international organisations in disaster management and
emergency response.

This update consists of significant natural disaster events
that occurred in ASEAN Member States – Brunei
Darussalam, Cambodia, Indonesia, Lao PDR, Malaysia,
Myanmar, Philippines, Singapore, Thailand, and Viet Nam.
The disasters recorded include Drought, Flood, Earthquake,
Tsunami, Volcano, Wind, Landslide, and Storm.

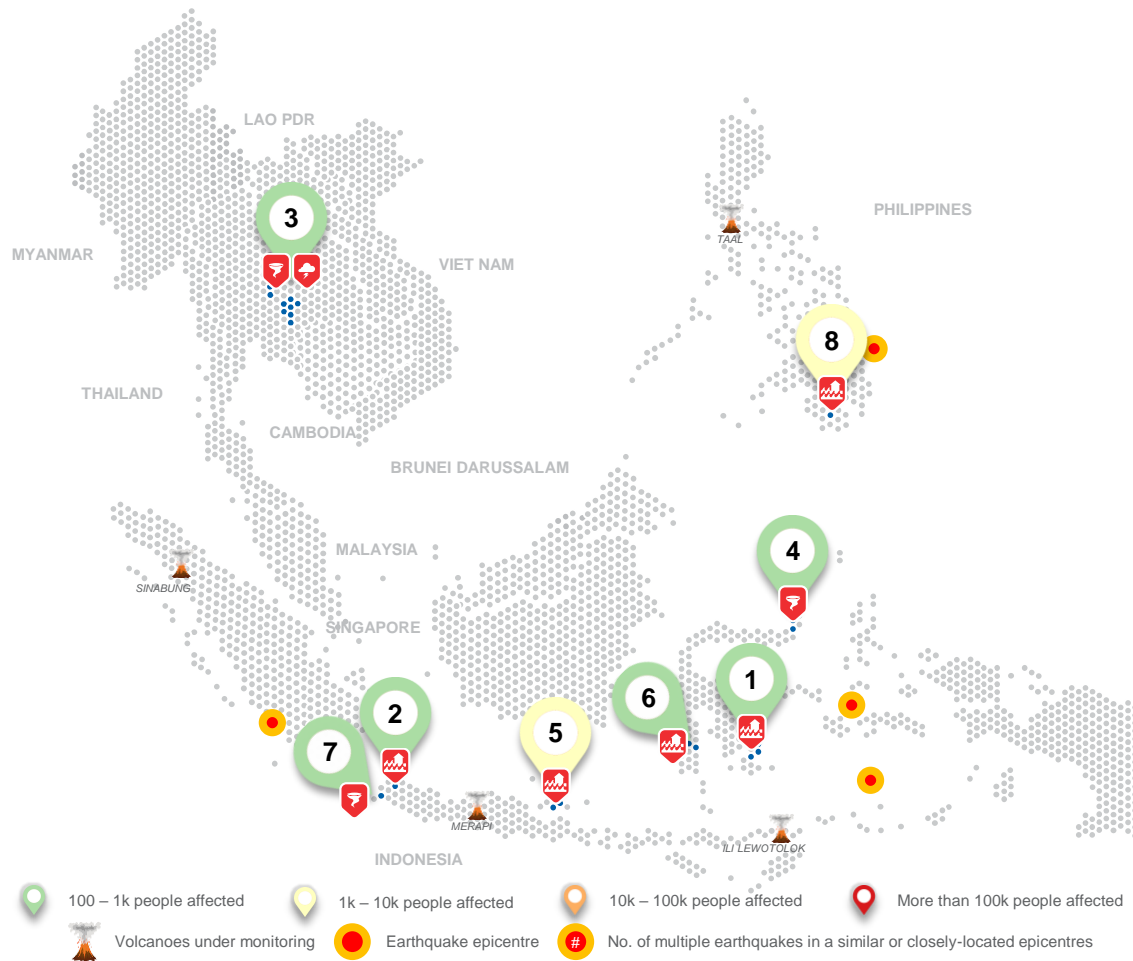
The use of boundaries, geographic names, related
information, and potential considerations for response are
for references, not warranted to be error-free or implying
official endorsement from ASEAN Member States.

© 2021 AHA Centre.
All rights reserved.

For inquiries, comments, and/or suggestions,
you may reach us through dma@ahacentre.org



SCAN TO SUBSCRIBE



REGIONAL TALLY



Note: Estimations are based on data reported/confirmed by National Disaster Management Organisations of each respective ASEAN Member State and other verified sources

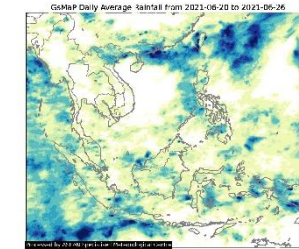
REGIONAL SUMMARY:

For the twenty-fifth (25th) week of 2021, a total of 9 disasters (5 floods, 3 wind-related, and 1 storm) affected the region. Indonesia, the Philippines, and Thailand have reportedly been affected. Several localized heavy rainfall which caused flooding and wind-related events occurred in Indonesia as reported by Badan Nasional Penanggulangan Bencana (BNPB). Heavy rains brought by the Inter-Tropical Convergence Zone (ITCZ) caused flooding in Bagumbayan, Sultan Kudarat as reported by the National Disaster Risk Reduction and Management Council (NDRRMC). The Department of Disaster Prevention and Mitigation (DDPM) of Thailand reported winds and storms in Nong Bua Lam Phu, Roi Et, and Surin Provinces.

HIGHLIGHT:

On 24 June, according to the BNPB, heavy rain caused the Keloam River and Semajit River to overflow in Pamekasan Regency. The flood reportedly affected around 1.5K households (6K people). The local disaster management agency was able to conduct a rapid assessment, evacuation of victims, and distribution of food relief. As of an update from 27 June, floods in the regency have reportedly receded.

HYDRO-METEO-CLIMATOLOGICAL:



For the past week, data from the ASEAN Specialised Meteorological Centre (ASMC) showed sporadic to sparse medium to high 7-day average rainfall mostly across the western-southwestern portion of the region (Sumatra, and Western Java, and western coasts of Mainland Southeast Asia). As of reporting, there is no tropical cyclone advisory by JTWC.

GEOPHYSICAL:

Four (4) significant earthquakes (M≥5.0) were recorded in the region by Indonesia's Badan Meteorologi Klimatologi dan Geofisika (BMKG) and the Philippine Institute of Volcanology and Seismology (PHIVOLCS). Merapi and Ili Lewotolok in Indonesia (alert level III) and Taal Volcano in the Philippines (alert level 2) reported recent volcanic activity and are under close monitoring. Volcanic activity was also reported for Mount Semeru, Ibu and Dukono in Indonesia according to PVMBG and PHIVOLCS.

OUTLOOK:

According to the ASMC, the following subseasonal conditions have been forecast wetter conditions for the southern parts of the Maritime Continent; Drier conditions for much of the Northern ASEAN region; and warmer temperatures for much of Mainland Southeast Asia. For the regional assessment of extremes, there is a small increase in chance for a very heavy rainfall event to occur in Southern Sumatra, western Java regions, southern Borneo, Sulawesi, Maluku Islands, and Nusa Tenggara in Indonesia; moderate increase in chance for extended dry conditions in Southern Myanmar, Thailand, most of Lao PDR, Cambodia, and Viet Nam; moderate increase in chance for extreme hot conditions in Southern Myanmar, Java Island, and Nusa Tenggara and very likely extreme hot conditions in Thailand, Lao PDR, Cambodia, and Northern Viet Nam.

01 Indonesia, [Flooding in North Buton Regency \(Southeast Sulawesi\)](#)
21 June 2021

02 Indonesia, [Flooding in East Jakarta City \(DKI Jakarta\)](#)
23 June 2021

03 Thailand, [Wind and Storm in Nong Bua Lamphu, Surin, and Ron Et Province](#)
23 June 2021

04 Indonesia, [Tornadoes in South Minahasa \(North Sulawesi\)](#)
24 June 2021

05 Indonesia, [Flooding in Pamekasan Regency \(East Java\)](#)
24 June 2021

06 Indonesia, [Flooding in Wajo Regency \(South Sulawesi\)](#)
26 June 2021

07 Indonesia, [Tornado in Pandeglang Regency \(Banten\)](#)
26 June 2021

08 Philippines, [Flooding in Bagumbayan, Sultan Kudarat \(Region XII\)](#)
27 June 2021