

EMERGENCY EVENT TRACKING: Kas, South Darfur

UPDATE 1: 10 August 2020

Data collection: 6 August 2020

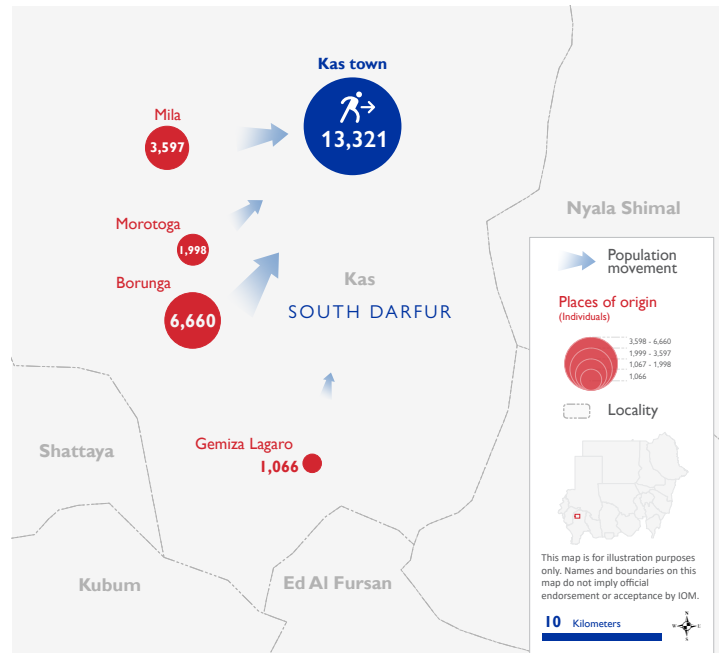
The DTM Emergency Event Tracking (EET) is deployed to track sudden displacement and population movements, provide more frequent updates on the scale of displacement and quantify the affected population when needed. As a subcomponent of the new Mobility Tracking methodology in Sudan ([Round one](#)), and activated on a need basis, EET utilises a broad network of key informants to capture best estimates of the affected population presence per location – a useful tool for humanitarian response planning and design.

Event Overview

13,321
IDP Individuals

2,422
IDP Households

DTM teams activated EET to monitor the displacement of individuals affected by inter-communal conflict between the Meseria and Fur tribes in Kas locality, South Darfur, which erupted on 31 July 2020 due to disputes over land issues. The first EET update estimates a total of 13,321 individuals (2,422 households) displaced in Kas town, having arrived from the surrounding villages of Borunga, Morotoga, Gemiza Lagaro and Molla. Field reports indicate displacement from Borunga is ongoing, hence displacement figures are expected to rise. At present, the majority of displaced individuals (99%) are gathering in open areas, whilst one per cent are seeking shelter and refuge with host communities. At least 1,516 individuals (11%) report additional vulnerabilities in need of assistance and support.



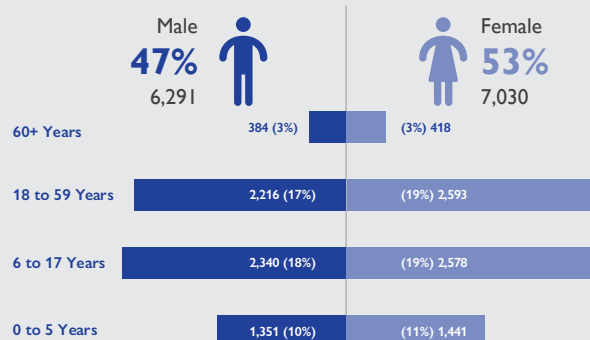
Shelter Indicator



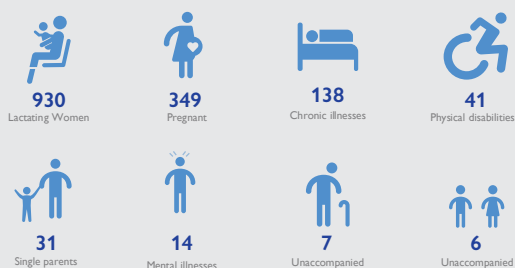
Return Intention

Data collected through the return intention indicator suggests that the majority of IDPs (100%) intend to return to their locations of origin upon improvement of the security situation.

Demographics



Vulnerabilities



IOM DISCLAIMER

The opinions expressed in the report are those of the authors and do not necessarily reflect the views of the International Organization for Migration (IOM). The designations employed and the presentation of material throughout the report do not imply the expression of any opinion whatsoever on the part of IOM concerning the legal status of any country, territory, city or area, or of its authorities, or concerning its frontiers or boundaries.

IOM is committed to the principle that humane and orderly migration benefits migrants and society. As an intergovernmental organization, IOM acts with its partners in the international community to: assist in the meeting of operational challenges of migration; advance understanding of migration issues; encourage social and economic development through migration; and uphold the human dignity and well-being of migrants.