

DISPLACEMENT TRACKING MATRIX EMERGENCY TRACKING

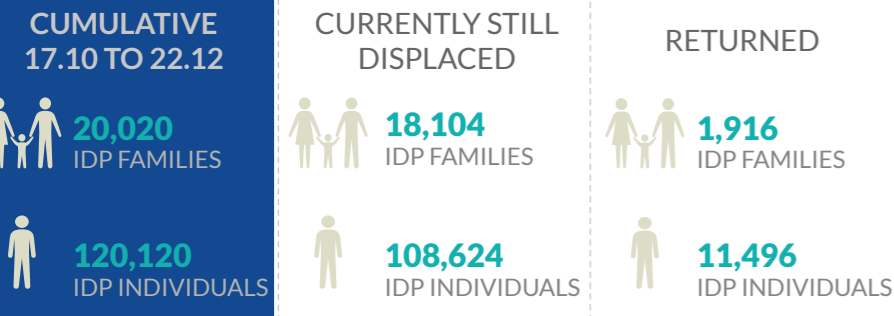
FACTSHEET 8# - MOSUL OPERATIONS FROM 17 OCTOBER TO 22 DECEMBER

The Emergency Tracking (ET) system is a crisis-based tool that aims at tracking sudden displacement or return movements triggered by specific crises. The ET figures reported on this portal are not cumulative of the all persons affected by the Mosul crisis thus far, rather the

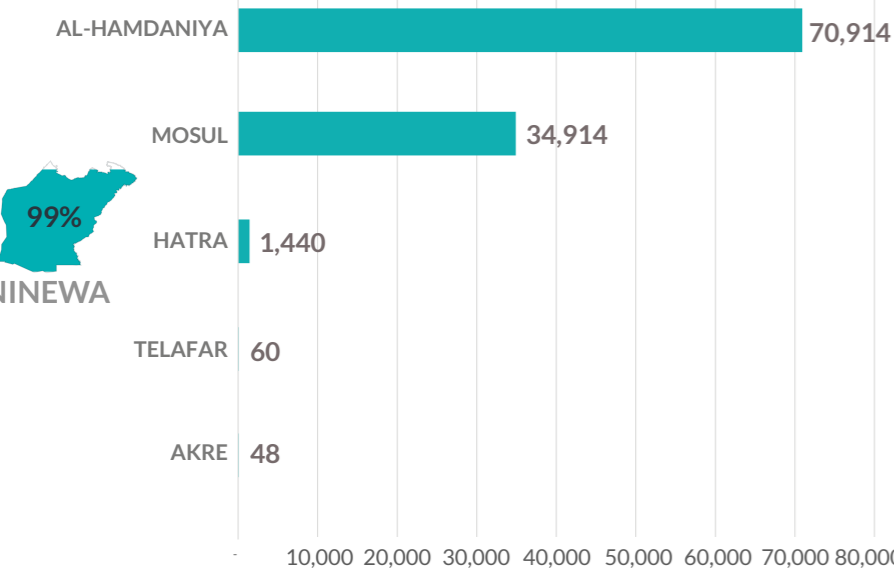
ET update provides only a snapshot of the current displacement situation for the indicated date. The data and information reported on this page are related solely to the displacement caused by the Mosul operations which started on 17 October 2016.



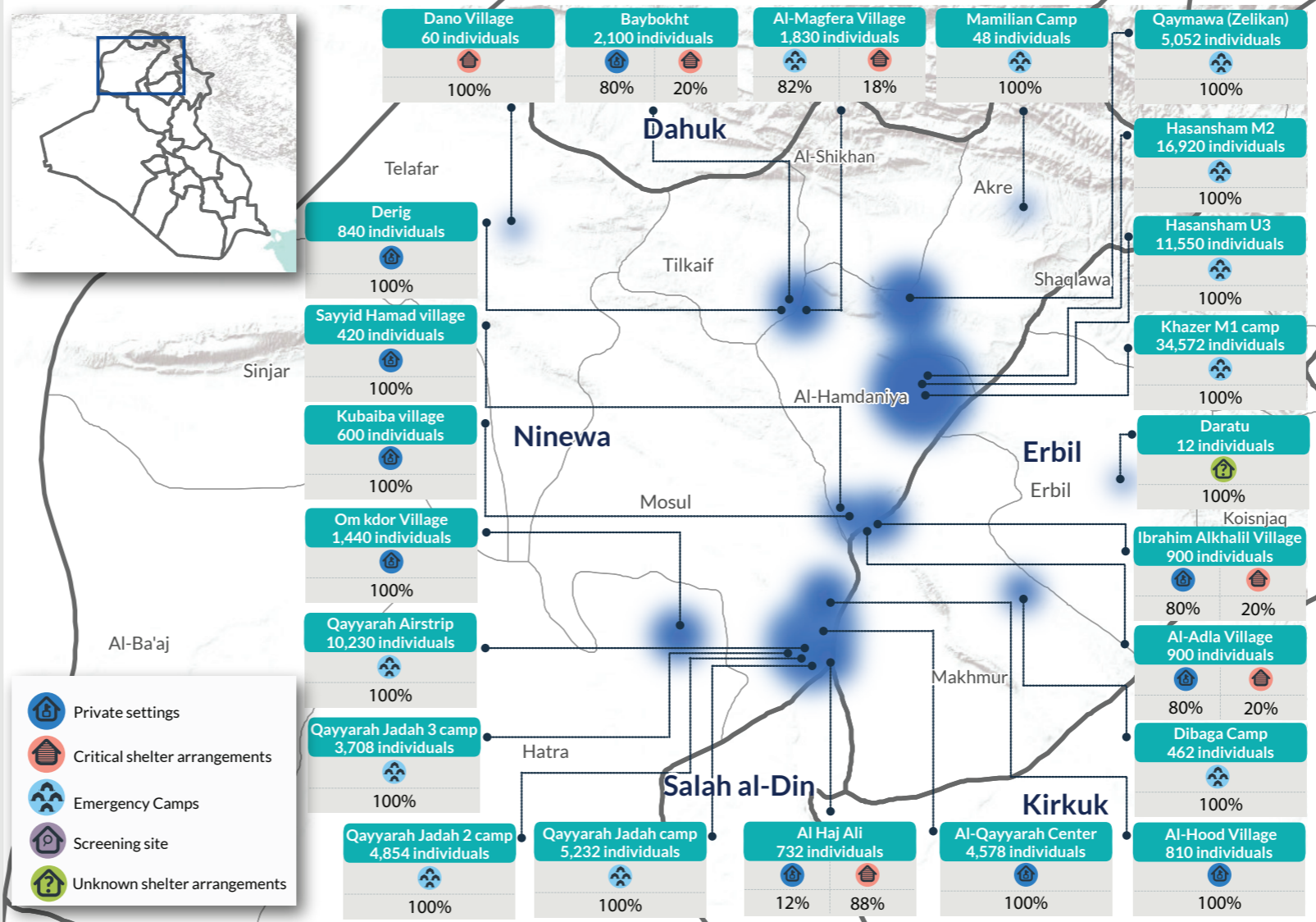
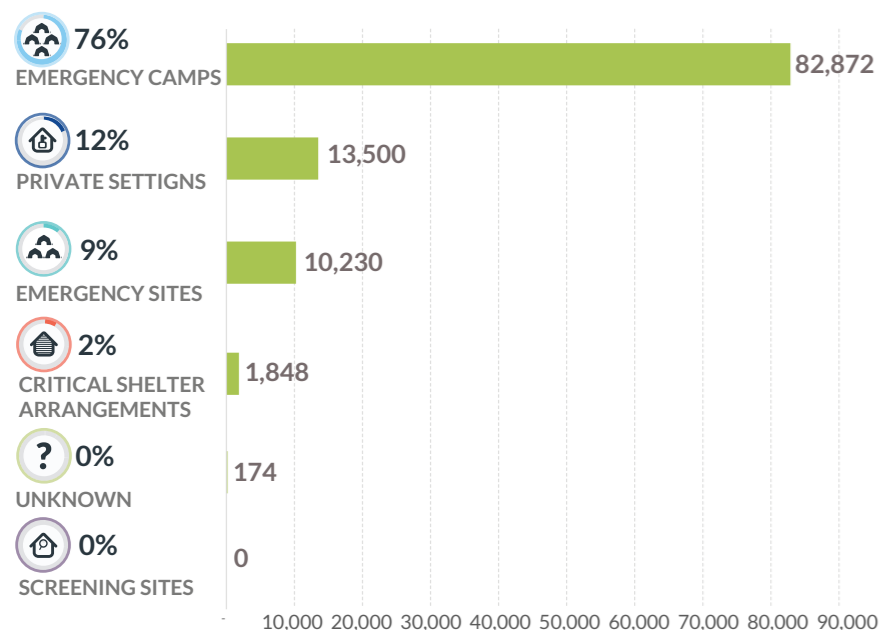
CUMULATIVE FIGURES



NUMBER OF IDPS BY MAIN DISTRICT OF DISPLACEMENT

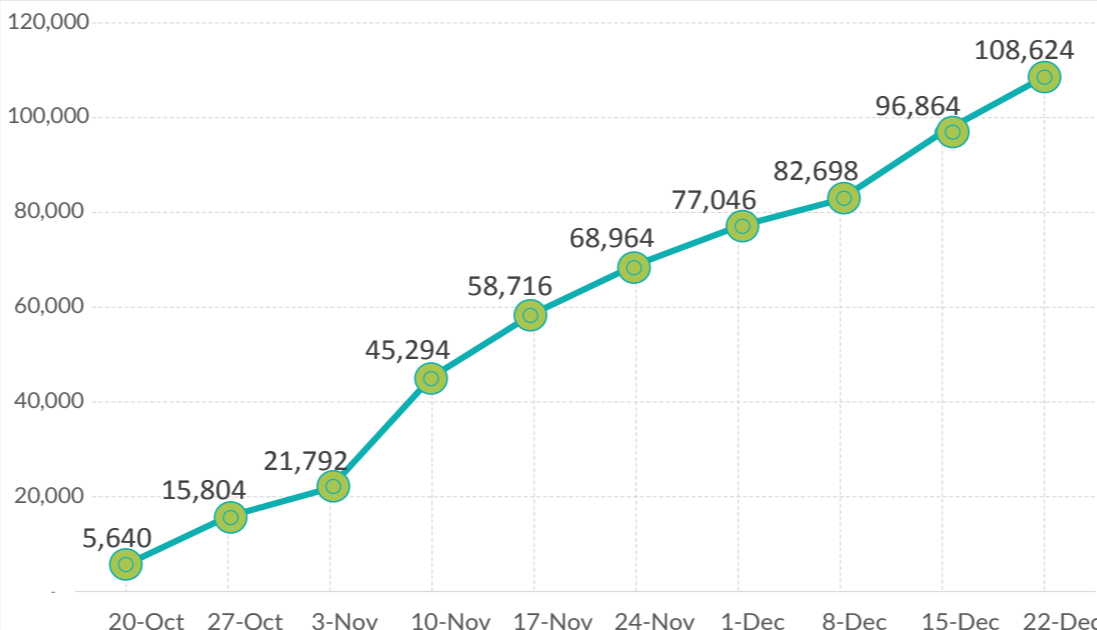


NUMBER OF IDPS BY SHELTER CATEGORY



- On 22 December, 18,104 IDP families (108,624 individuals) were still displaced, that is, 12% more than on 15 December. Between the updates of 15 and 22 December, a net increase of 1,960 new IDP families (11,760 individuals) has been recorded.
- New displacements have been recorded in Ninewa governorate last week. The sub-district that recorded the largest increase is Qayyarah (Mosul district): Qayyarah Jad'ah 3 camp, a newly opened extension of Qayyarah Jad'ah camp, recorded an increase of 618 families (3,708 individuals). Qayyarah Airstrip emergency site reported the arrival of 392 IDP families (1,313 individuals), a 30% increase compared to the IDP population on 15 December. Qayyarah Jad'ah 2 camp IDP population increased by 338 families (2,028 individuals).
- As reported on 22 December, the total IDP population tracked by the Mosul Operations ET identified in Qayyarah Jad'ah (distributed across the main camp and its two extensions) is 2,299 IDP families (13,794 individuals), that is 70% more than on 15 December (948 families or 5,688 individuals).
- It is worth noting that the location hosts also IDPs displaced because of other crises in Shirqat and Hawija who have been tracked by DTM Hawija ET and DTM Salah al-Din and Ninewa ET, totaling 2,743 families (15,458 individuals).
- Hasansham M2 camp (former Khazer M2), in Hamdaniya district, also recorded an increase, of 475 IDP families (2,850 individuals).
- The districts that recorded the highest increase in IDP population last week are Mosul district (34% or 8,880 individuals), because of the new arrivals to Qayyarah Airstrip emergency site, and Qayyarah Jad'ah camps and Hamdaniya, with an increase of 4% (2,844 individuals), because of new arrivals to Hasansham M2 camp (former Khazer M2).
- Between 15 and 22 December, the overall population in camps and emergency sites grew by 14% (11,346 individuals).

DISPLACEMENT TIMELINE FROM 17 OCTOBER: WEEKLY UPDATES



LAST WEEK DAILY UPDATES (FROM 16.12 TO 22.12)

