

People in Affected Areas



Response Coordination

3 affected localities with functioning partner coordination mechanism
(100% of target)

WASH

88 health facilities in affected health zones provided with essential WASH services
(28% of target)

294 schools in high risk areas provided with handwashing facilities
(49% of target)

430 community sites (port, market places, office etc) provided with hand washing facilities in the affected areas
(48% of target)

577,952 people with access to safe water source in the affected areas
(61% of target)

C4D

6,068 members of specific-groups reached through community engagement and interpersonal communication activities *
(85% of target)

2,755 frontline workers (RECO) in affected zones mobilized on ebola response and participatory community engagement approaches.
(59% of target)

3,598,172 at-risk people reached through community engagement and interpersonal communication approaches **
(63% of target)

206 households for which personalized house visits was undertaken to address serious misperception about Ebola, refusals to secure burials or resistance to vaccination.
(56% of target)

9,656 listed eligible people for ring vaccination informed of the benefits of the vaccine and convinced to receive the vaccine within required protocols
(98% of target)

Psychosocial Support & Protection

142 families with confirmed or probable cases who received psycho-social support and/or material assistance
(100% of target)

1001 contact family members, including children, who receive psycho-social support and/or material assistance
(66% of target)

135 unaccompanied children and orphans* identified who received appropriate care and psycho-social support
(45% of target)

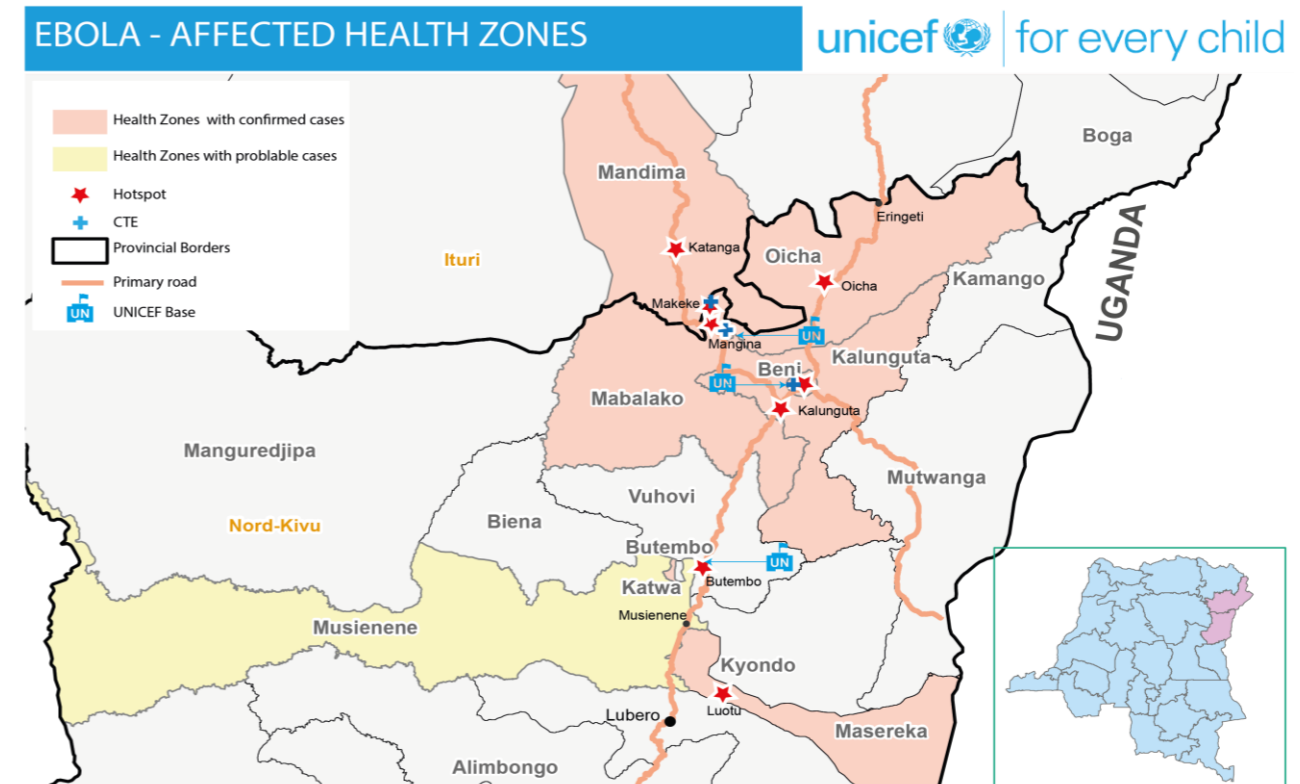
Situation - Key Numbers

MoH, 15-Aug-18

142 Total cases
• 63% in Mabalako HZ
• 97 (68%) deaths

2173 contacts under surveillance

Affected Health Zones



Disclaimer: The boundaries and names shown and the designations used on this map do not imply official endorsement or acceptance by the UN

Education

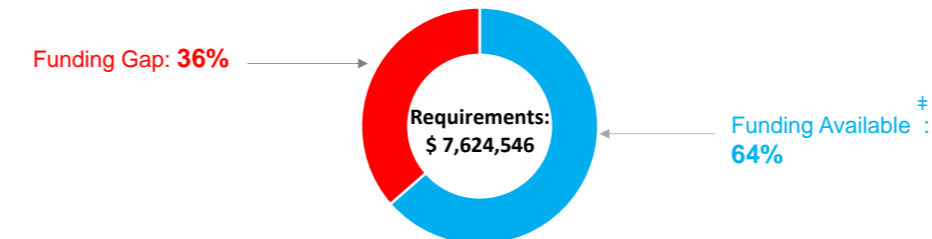
33,825 school children reached with Ebola prevention information
(11% of target)

2,230 teachers briefed on Ebola prevention information
(31% of target)

UNICEF's Capacity

56 UNICEF staff members from C4D, Infocom, Child Protection, Health and WASH are currently deployed to the affected health zones in North Kivu province. An incoming surge of 8 staff in logistics, health, WASH, and operations is expected to support UNICEF interventions in North Kivu.

Funding



Nutrition

550 of under 23 months children caregivers who received appropriate counseling on IYCF in emergency
(6% of target)

Supply and Logistics

Since the beginning of the response, USD \$1,437,846 to USD\$ 1,464,995 worth of items have been deployed for the Ebola response in Ituri and North Kivu province.

Key Donors

- Geographic reprogramming from World Bank (PEF), USAID, ECHO, Japan
- Funds received from GAVI, CERF, German NatCom and USAID
- Approved additional funding from the World Bank

Coordination and Key Partners

UNICEF continues to participate actively in the coordination mechanisms at national level, provincial, and local level and co-leads the commissions on communication, WASH and psychosocial care; and active in the working groups on logistics and vaccination. Beni currently serves as the operational headquarters for UNICEF's response. A UNICEF security specialist is also deployed in the field to support security assessment and safety of the operations.

The coordination of UNICEF's response is dynamic due to the identification of confirmed cases in Makeke, Mandima Health zone, Oicha Health Zone, Butembo and Masereka Health Zone. UNICEF coordinates Makeke's Ebola response from the coordination team based in Mangina Health Area and the coordination response for Oicha Health Zone. A new coordination hub is currently being put in place in Butembo Health Zone, which will also support the response in Masereka Health Zone. A psychosocial and communication commissions have been set up in Butembo Health Zone, composed of five clinical psychologists and communications specialists. Due to the security access in Oicha and Masereka Health Zone, UNICEF works through a local partner to

* Examples: CAC, religious leaders, opinion leaders, educators, motorists, RECO, military, journalists, meat sellers, drivers, youth groups, other
 ** Examples: door-to-door, church meetings, small-group training sessions, school classes, briefings with leaders and journalists, other