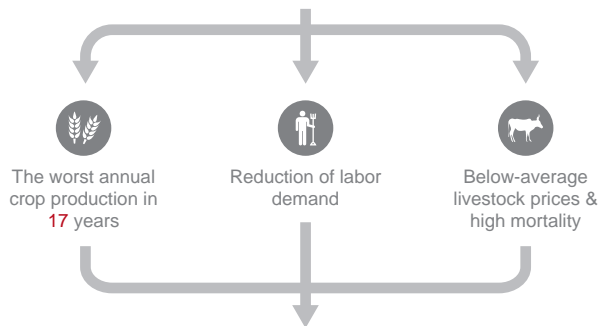




In Somalia, the situation is deteriorating with famine declared in six regions and threatening to expand throughout the south. Rates of malnutrition and mortality are increasing, and communicable diseases continue to spread.^c

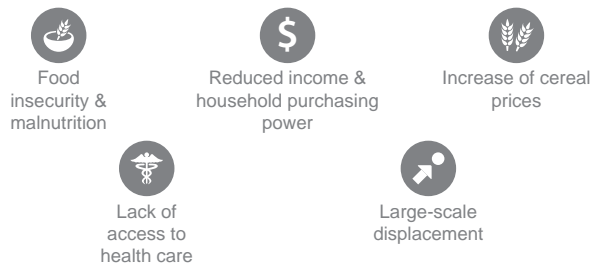
Analysis of the crisis: Factors and effects^b

The complete failure of the last two rainy seasons (Oct.-Dec 2010 and Apr.-Jun 2011) have resulted in:



Adverse effects

Limitations on humanitarian access aggravate the effects

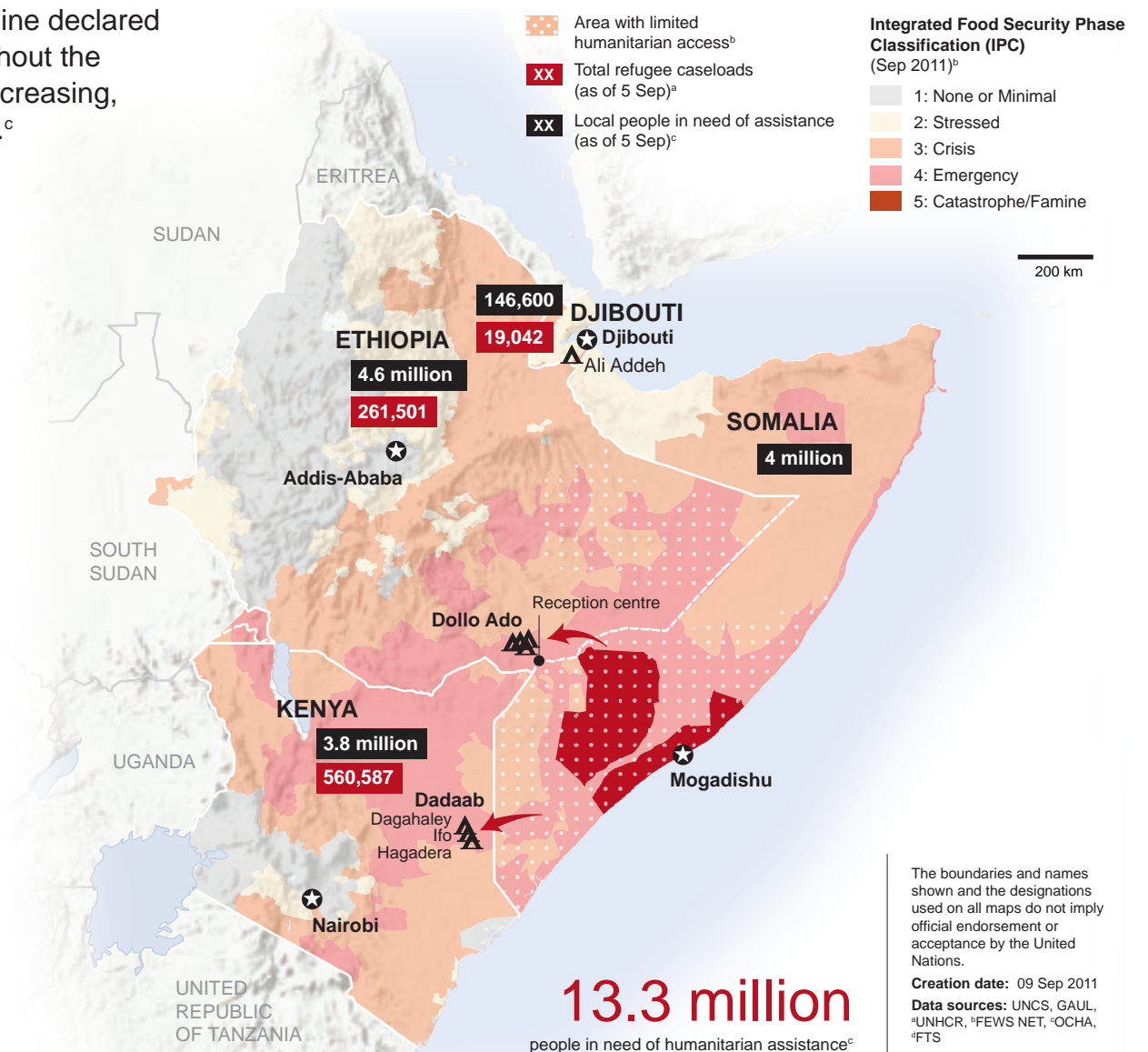


Funding status: 2011 Horn of Africa Drought^d

US\$2.5 billion
is required

US\$1.6 billion
has been funded (as of 9 Sep 2011)

63% funded



The boundaries and names shown and the designations used on all maps do not imply official endorsement or acceptance by the United Nations.

Creation date: 09 Sep 2011
Data sources: UNCS, GAUL, ^aUNHCR, ^bFEWS NET, ^cOCHA, ^dFTS

In collaboration with:



Feedback: ochaavmu@un.org
www.unocha.org
www.reliefweb.int