

SITREP #12
Humanitarian Situation of Population affected by Floods in Honduras

Country: Honduras
Name and type of operation: PRRO 10444.0
Reporting period: 6 / Oct / 08 to 10/ Nov/ 08
Date of report: 11 of November 2008

1. Main Events:

The damages left by the rainfall are very significant, mainly in the Atlantic Region (provinces of Cortes, Colon and Gracias a Dios). The total number of people affected was more than 300,000 people affected 49 people deaths and 18 missing (table 2).

Table 2: Affected population

Provinces	Affected	Evacuated	Injuries	Death	Missing	People living in shelters
Honduras	313,350	50,606	7	49	18	43,349
Atlantida	11,205	3,400	-	-	2	523
Colón	22,977	6,587	2	5	2	5,796
Comayagua	11,591	1,613	-	3	4	434
Copan	38,659	1,621	-	-	-	479
Cortés	14,898	12,397	-	2	-	29,053
Choluteca	52,275	723	1	3	1	1,204
Paraiso	5,183	1,021	2	3	-	815
Fco. Morazan	27,708	1,059	-	11	8	991
Gracias a Dios	1,450	2,518	2	-	1	2,843
Intibuca	2,900	210	-	1	-	140
Islas de la Bahía	-	-	-	1	-	-
La Paz	1,452	1,160	-	1	-	-
Lempira	1,541	375	-	-	-	131
Ocatepeque	265	140	-	-	-	83
Olancho	69,093	1,547	-	12	-	663
Sta. Barbara	9,478	-	-	2	-	-
Valle	9,183	3,445	-	1	-	194
Yoro	33,492	12,790	-	4	-	-

Sources: COPECO and WFP Food Aid Monitors SITREP

The damage to the infrastructure is also significant, mainly to the communication, agricultural and house sectors, where more than 70,000 hectares were damaged, and near 1,400 houses destroyed or damaged (table 1), which negatively affect the food security not only in the short term, but also the mid term food availability and access for the most vulnerable population.

2.1.1 Impact on Infrastructure

Location:	Houses		Public Building			Basics Services Systems			Roads		Bridges		Agricultural sector
Region	Destroyed	Damages	School	Health Centers	Churches	Electricity	Water	Sewage	Destroyed	Damages	Destroyed	Damages	Number of Hectares Affected
Total	743	290	26	2	2	2	29	7	743	290	87	120	70,112
Atlántida	0	2	0	0		0	0	0	0	2	0	4	0
Colón	181	38	1	1		0	0	0	181	38	5	16	3
Comayagua	41	42	4	0		0	8	2	41	42	19	16	1,941
Copan	64	16	3	0		0	5	0	64	16	3	0	57
Cortés	1	2	2	0		0	0	1	1	2	0	0	48,951
Choluteca	7	7	1	0		1	3	1	7	7	2	1	6,993
Paraiso	127	24	3	0		0	2	0	127	24	22	12	490
Fco. Morazan	41	35	1	0		0	2	0	41	35	11	2	701
Gracias a Dios	48	0	4	0		0	0	3	48	0	4	52	0
Intibuca	3	3	0	0		0	0	0	3	3	0	0	0
Islas de la Bahía	0	0	0	0		0	0	0	0	0	0	0	0
La Paz	1	11	0	0		0	0	0	1	11	2	0	58
Lempira	74	5	0	0		0	1	0	74	5	0	0	420
Ocotepeque	21	5	0	0	1	0	0	0	21	5	0	0	30
Olancho	65	26	1	0	1	0	1	0	65	26	9	4	10,140
Sta. Barbara	24	28	5	0		0	1	0	24	28	6	4	3
Valle	7	3	1	0		1	6	0	7	3	3	2	45
Yoro	38	43	0	1		0	0	0	38	43	1	7	280

*Sources: COPECO and WFP Food Aid Monitors SITREP

The damage to the infrastructure and transport limitations (743 roads and 87 bridges destroyed) is limiting the access to some isolated areas in the provinces of Gracias a Dios, Colon. In the case of Colon about 5,178 peoples living in 20 communities are still isolated in need the immediate assistance.

WFP, in coordination with national and local authorities, is providing a timely response to affected population, through food pre-positioned in the most vulnerable areas. So far, more than 597 MT of food have been distributed, benefiting near 34,000 families in 65 municipalities.

2. Response/actions implemented by Counterpart and WFP:

- The Honduras Government is preparing the rehabilitation plan for the most affected areas
- WFP food aid monitors in coordination with National and local authorities and NGOs are carrying out damages assessment to prepare the rehabilitation plan and providing humanitarian assistance to the most affected population.
- More than 597 MT of food have been distributed during the emergency, benefiting near 34,000 families (169,295 people).
- 60 MT were delivered to Gracias a Dios to assist the four most affected municipalities and affected population.

Table 3: Number of Beneficiaries and food delivered

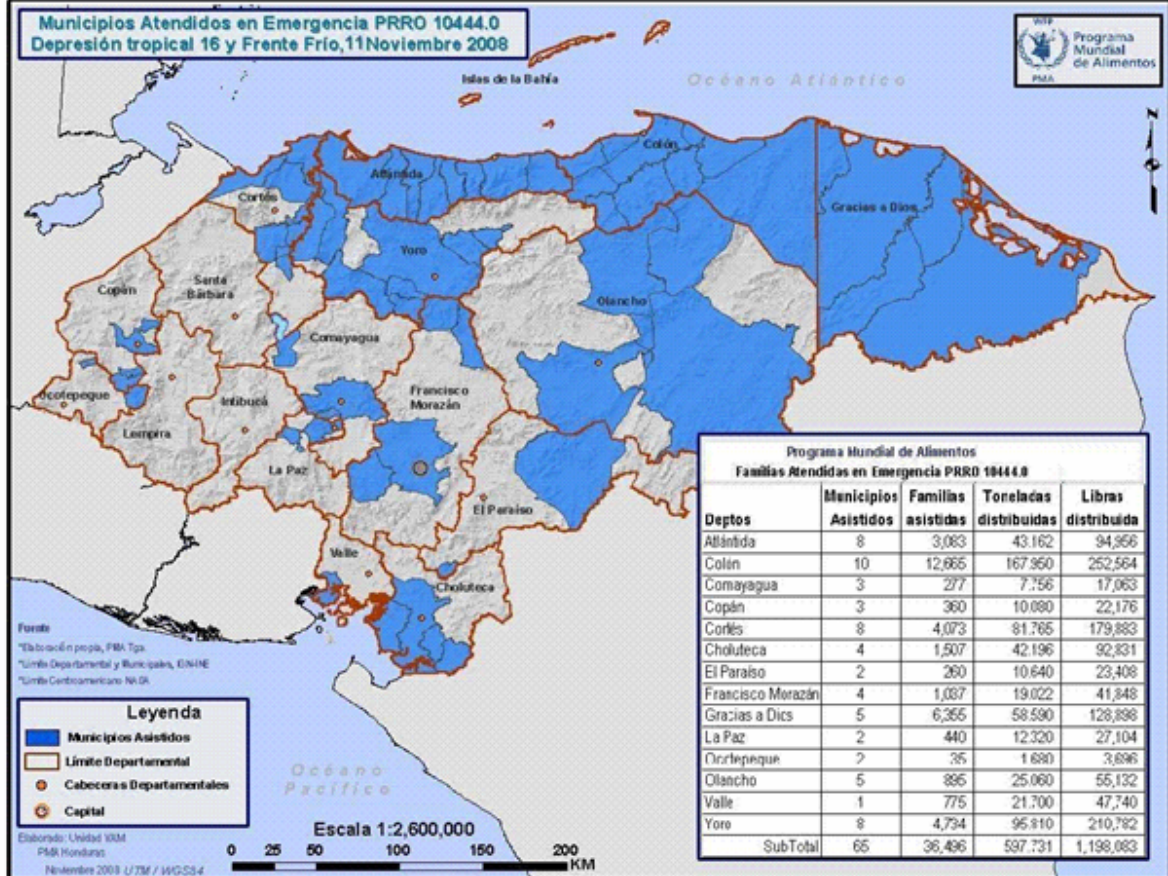
Department and Municipality	Number of beneficiaries		Modality (free distribution, FFW, community kitchen)	Number of days	Delivered food
	Families	Persons			(MT)
Central Region	2909	14545	Free distribution	9	74.80
Suothern Region	2,282	11410	Free distribution	10	63.90
Nothern Region	28273	141365	Free distribution	5	412.53
Western Region	395	1975	Free distribution	11	11.76
Total	33,859	169,295		6	562.98

Sources: WFP Food Aid Monitors SITREP

3. Main constraints:

- The emergency situation for most of the country is over, and most of the affected population has left the shelters (only about 60 families are still living in temporal shelters). However, the return of the families to the communities and the rehabilitation of house and livelihood is still a big concern. WFP in coordination with the municipalities and NGOs have started the recovery process; however, food resources and other non-food items are limiting the process.
- More than 5,000 people are isolated in the provinces of Colon. In Gracias a Dios the isolation and competition for transporting other commercial goods, and food market depletion is increasing food insecurity in the area. One of the vessels transporting commercial goods (not WFP goods) caught fire during the week.
- **Airlift operations:**
 - So far, 18 airlifts have been already carried out in coordination with COPECO and the Honduras Air Force. However, about 15 MT of food need to be delivered (some 25 airlifts) in order to assist the 20 isolated communities in the Colon province.
- **Food Resources:**
 - Food needs figures are increasing due to high vulnerability and the low copying mechanism. The situation will get worse in the mid term because the damage to the agricultural sector and other livelihood of the population.
 - Some provinces are still under high risk (Colon, Cortes and Gracias a Dios) and some others (as the southern region) need to initiate their family assets rehabilitation throughout the PRRO recovery component.
 - WFP urgently needs at least 2,000 MT of food through the regional PRRO 10444.0, in order to start recovery activities. Those requirements had been included in the Flash Appeal documents.

Municipios Atendidos en Emergencia PRRO 10444.0
Depresión tropical 16 y Frente Frio, 11 Noviembre 2008



Fonte:
 *Elaboración propia, PMA Tgo.
 †Límite Departamental y Municipales, ENIHE
 ‡Límite Centroamericano N.A.G.

Legenda

- Municipios Asistidos
- Límite Departamental
- Cabeceras Departamentales
- Capital

Programa Mundial de Alimentos
Familias Atendidas en Emergencia PRRO 10444.0

Deptos	Municipios Asistidos	Familias asistidas	Toneladas distribuidas	Libras distribuidas
Atlántida	8	3,083	43,162	94,366
Colón	10	12,665	167,950	252,564
Comayagua	3	277	7,156	17,063
Copán	3	360	10,080	22,176
Cortés	8	4,073	81,765	179,883
Choluteca	4	1,507	42,196	92,331
El Paraíso	2	260	10,640	23,408
Francisco Morazán	4	1,037	19,022	41,848
Gracias a Dios	5	6,365	58,590	128,898
La Paz	2	440	12,320	27,104
Ocotepeque	2	35	1,680	3,696
Olancho	5	886	25,060	55,132
Valle	1	775	21,700	47,740
Yoro	8	4,794	95,810	210,792
SubTotal	65	36,436	537,731	1,198,083

Elaborado: Unidad VOM
 PMA Honduras
 Noviembre 2008 U7M / WG:534