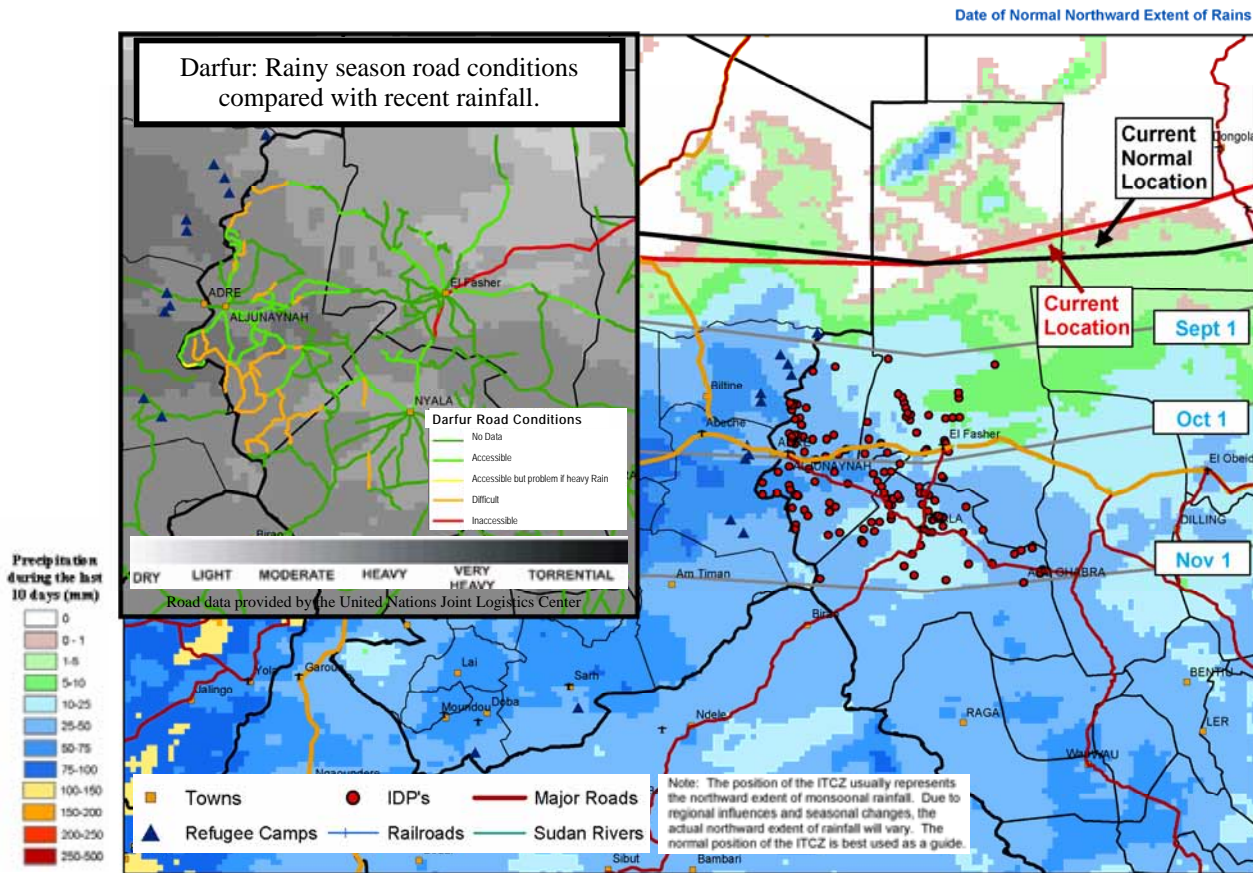


# Darfur Crisis: Rain Timeline

31 August 2006

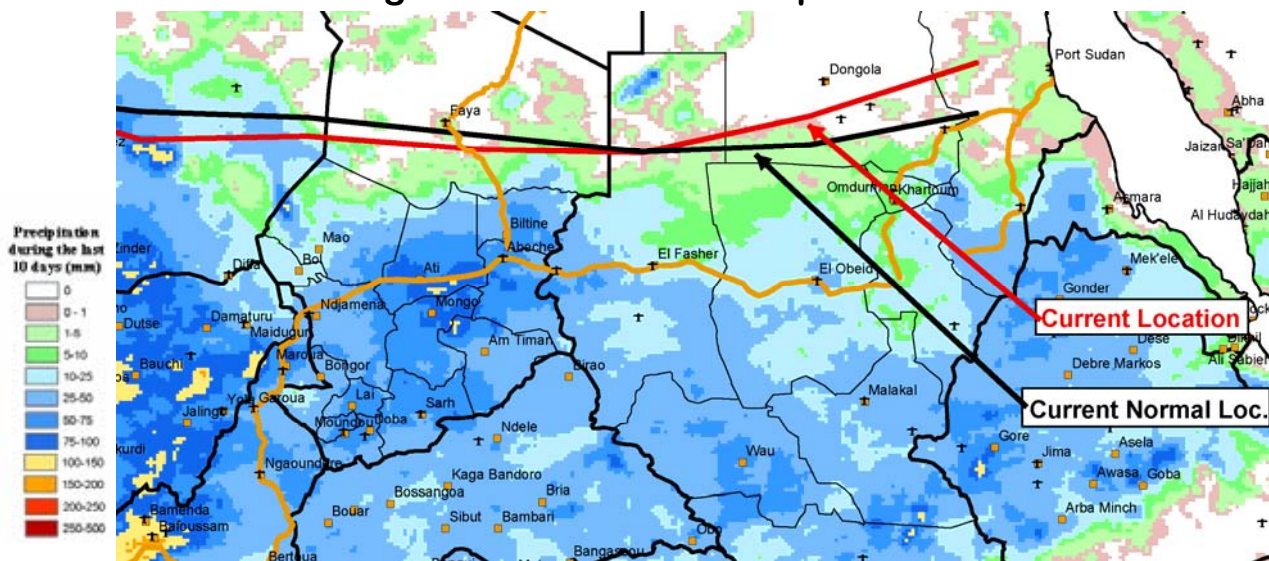
Time remaining before the retreat of rains from Darfur and Eastern Chad



The dates to the left show the average position of the northernmost edge of the rains in Darfur and Eastern Chad each month

Already humanitarian access in Darfur and eastern Chad is severely limited because of insecurity. Much of eastern Chad is cut off with seasonal rains, and while large towns in Darfur may be accessible, and surrounding areas will be difficult to access, especially in West Darfur. Seasonal rains are expected to continue across central and southern portions of Darfur and Chad, and may be locally heavy across southern areas. Over the northern camps in Chad and Darfur, chances of rain will be low until late in the period when scattered showers are expected.

## Regional Overview: Transport Corridors



The dates to the left show the average position of the northernmost edge of the rains in comparison to the main logistics corridors for the region

For more information please contact either:



Richard Choularton, FEWS NET  
Contingency and Response Planning Advisor  
rchoularton@fewsn.net  
Tel: + 1 (202) 955 4153

Chet Schmitt or Tim Love, NOAA  
chet.schmitt@noaa.gov or tim.love@noaa.gov  
Meteorologist(s)  
Tel: +1 (301) 763-8000 x 7549

