

**Press Information Bureau
Government of India
Ministry of Earth Science**

30-November-2017 18:22 IST

Cyclonic Storm 'OCKHI' over south Kerala coast and neighbourhood & Cyclone Warning for South Kerala, adjoining districts of south Tamil Nadu and Lakshadweep Islands- ORANGE message (Position as at 1700 hrs)

Latest observations and satellite imageries indicate that the cyclonic storm 'OCKHI' over Comorin area moved west-northwestwards with a speed of 20 kmph during past 06 hours and lay centred at 1430 hrs IST of today, the 30th November, 2017 over south Kerala coast and neighbourhood near Latitude 7.9° N and Longitude 76.4° E, about 120 km west-southwest of Kanyakumari, 180 km south-southwest of Thiruvananthapuram and 360 km east-southeast of Minicoy. The system is very likely to move west-northwestwards towards Lakshadweep Islands and intensify further into a severe cyclonic storm during next 24 hours.

Date/Time(IST)	Position (Lat. °N/ long. °E)	Maximum sustained surface wind speed (kmph)	Category of cyclonic disturbance
30/1430	7.9/76.4	75-85 GUSTING TO 95	CYCLONIC STORM
30/1730	8.5/76.0	80-90 GUSTING TO 100	CYCLONIC STORM
30/2330	9.0/75.0	85-95 GUSTING TO 100	CYCLONIC STORM
01/0530	9.5/74.2	95-105 GUSTING TO 115	SEVERE CYCLONIC STORM
01/1130	10.0/73.4	100-110 GUSTING TO 120	SEVERE CYCLONIC STORM
02/2330	11.0/72.0	110-120 GUSTING TO 130	SEVERE CYCLONIC STORM
03/1130	12.0/70.5	110-120 GUSTING TO 130	SEVERE CYCLONIC STORM

Warning:

(i) Heavy Rainfall warning:

- Rainfall at most places with heavy to very heavy rainfall at isolated places very likely over south Tamil Nadu & south Kerala during next 24 hours and isolated heavy falls over interior Tamil Nadu and Kerala during subsequent 24 hours.
- Rainfall at most places with heavy to very heavy rainfall at a few places and isolated extremely heavy falls very likely over Lakshadweep area during next 48 hours.

(ii) Wind warning:

- Gale wind speed reaching 65-75 kmph gusting to 85 kmph very likely along & off South Kerala during next 48 hours and along & off south Tamilnadu during next 24 hours.
- Squally winds speed reaching 55-65 kmph gusting to 75 kmph very likely along & around Lakshadweep Islands during next 12 hours and increase thereafter with wind speeds becoming 80-90 kmph gusting to 100 kmph from tonight, the 30th November 2017.

(ii) Sea condition:

- Sea conditions would be high along & off South Kerala coast during next 48 hours and along & off south Tamilnadu coast during next 24 hours.
- Sea conditions would be very rough to high over and around Lakshadweep Islands during next 12 hours and high to very high during subsequent 48 hours.

(iii) Damage Expected over south Kerala (Alappuzha, Kottayam, Idukki, Kollam, Pathanathitta, Thiruvananthapuram districts), adjoining districts of south Tamil Nadu (Kanyakumari, Tutukudi and Tirunelveli districts) and Lakshadweep Islands: Damage to power and communication lines due to breaking of tree branches and uprooting of trees. Damage to thatched houses: Major damage to kutcha houses and minor damage to pucca roads. Damage to paddy crops, banana, Papaya trees and orchards.

(iv) Storm surge:

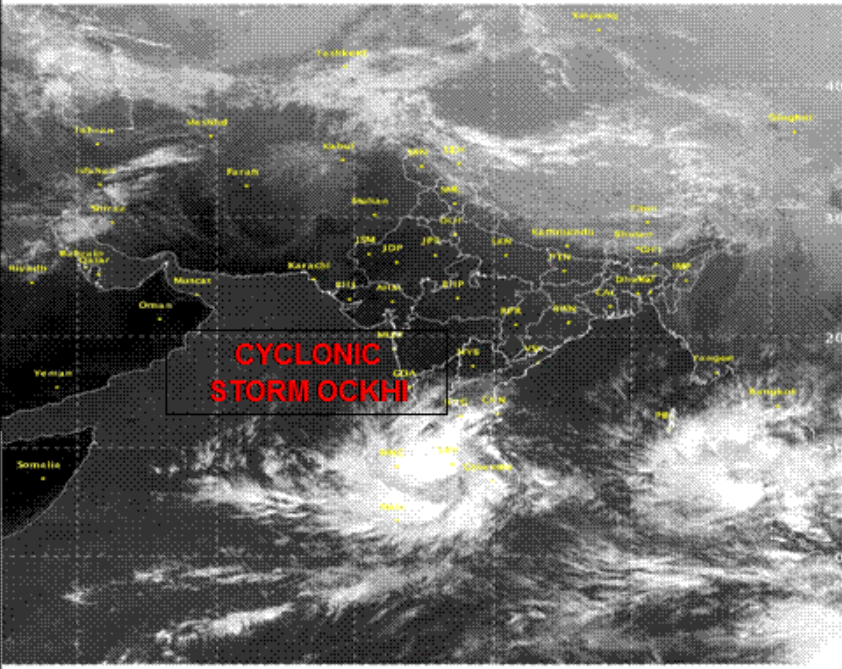
- Storm surge of about 1 meter above astronomical tides very likely to inundate low lying areas of Lakshadweep Islands from tonight, the 30th November 2017.
- Storm surge of about 0.5 meter above astronomical tides very likely to inundate low lying areas of coastal districts of south Kerala (Alappuzha, Kollam, and Thiruvananthapuram districts), and adjoining districts of south Tamil Nadu (Kanyakumari, Tutukudi and Tirunelveli districts) during next 12 hours.

(v) Action suggested

- **Lakshadweep Islands:** Fishermen along & off Lakshadweep Islands are advised not to venture into the sea during next 48 hours.
- **South Tamil Nadu and South Kerala :** Fishermen are advised not to venture into the sea along & off South Tamil Nadu coast during next 24 hrs and along and off South Kerala coasts during next 48 hours.

SAT :INSAT-3D IMG
 IMG_TIR1 10.6 um
 L1C Mercator (LINEAR STRETCH: 1.0%)

30-11-2017/10:30 GMT
 30-11-2017/16:00 IST



447 889 IMD/Delhi

