



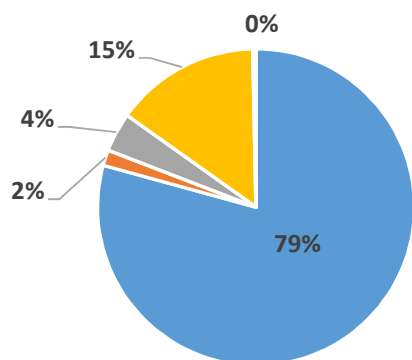
**OUTCOME 5: Boys & girls at risk and survivors of violence, exploitation and abuse have access to an improved and equitable prevention & response**

**Output 5.2: Displaced and host community boys & girls at risk or survivors of violence have access to an integrated package of quality prevention and response services**

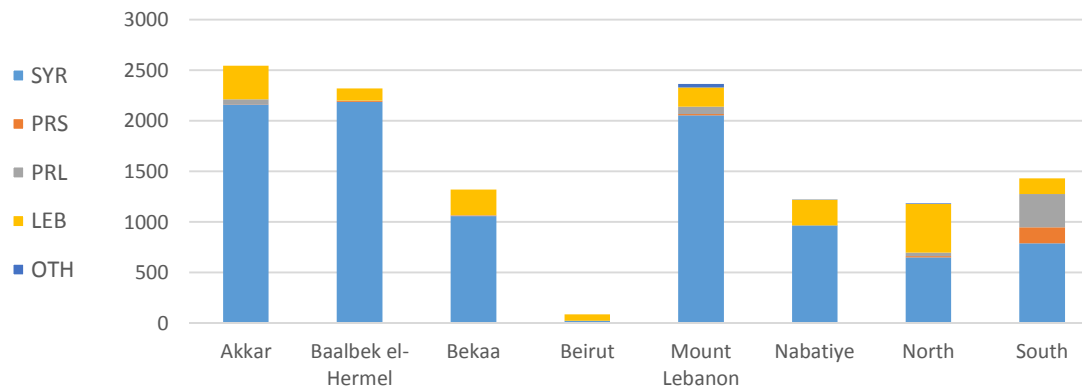
Funding agencies: UNICEF, UNHCR, OCHA, independent sources.

Information management: Vicken Ashkarian, vashkarian@unicef.org

**Indicator 5.2.2: # of boys & girls accessing CP & focused PSS**



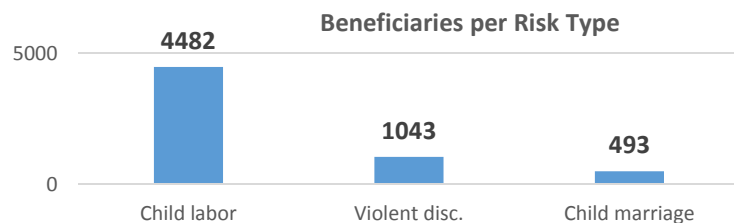
Disaggregations		
Cohorts	Sex	Risk type
12469	12455	6018



Aggregated per sex		Aggregated per age groups*		
Male	Female	0 - 5	6 - 11	12 - 17
54.8%	45.2%	0.2%	58.8%	40.9%

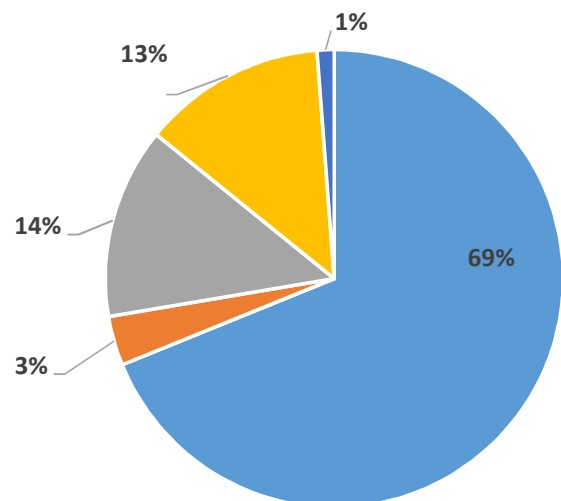
\* Disaggregation by age excludes data from UNICEF Pal. Prog.

Governorates							
Akkar	B/H	Bekaa	Beirut	ML	Nab	Nt	St
2543	2320	1320	86	2364	1221	1185	1430



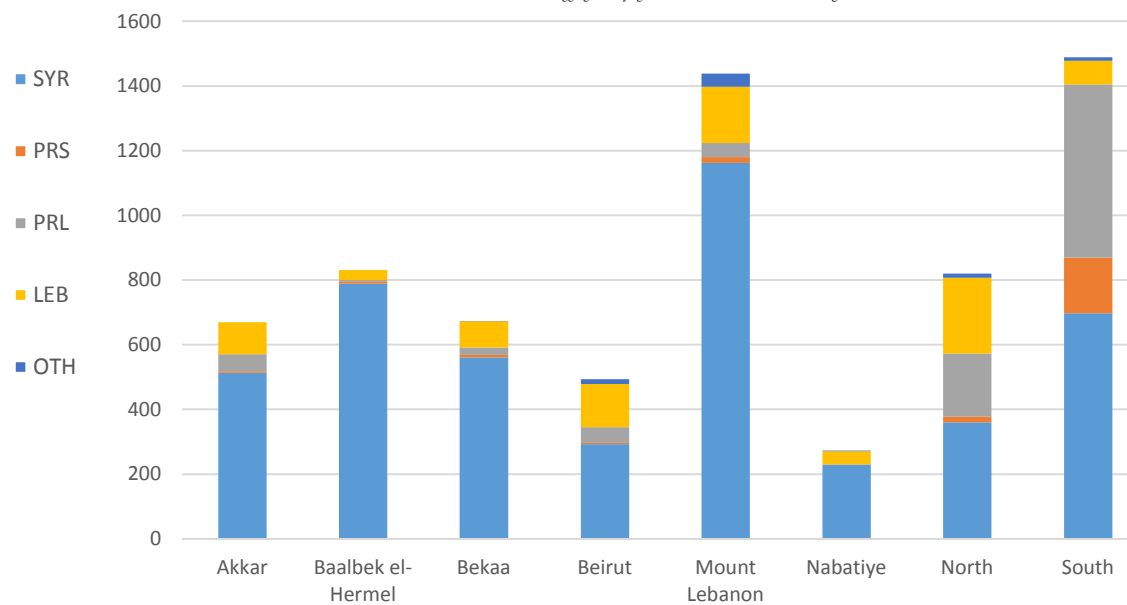
**Partners:**  
DRC, DRC/LRC, Himaya, Intersos, IR, IRC, KAFA, MAP, Mercy Corps, Mouvement Social, Saj, SCI, TdH - It, TdH - L, WCH, WVI, YNCA.

### Indicator 5.2.3: # of boys & girls assisted through CP case management services



Disaggregations			
Cohorts	Sex	Age*	Risk type
6687	6673	5503	5361

\* Disaggregation by age excludes data from UNICEF Pal. Prog.



Aggregated per sex		Aggregated per age groups*		
Male	Female	0 - 5	6 - 11	12 - 17
59.9%	40.1%	11.6%	36.3%	52.1%

\* Disaggregation by age excludes data from UNICEF Pal. Prog.

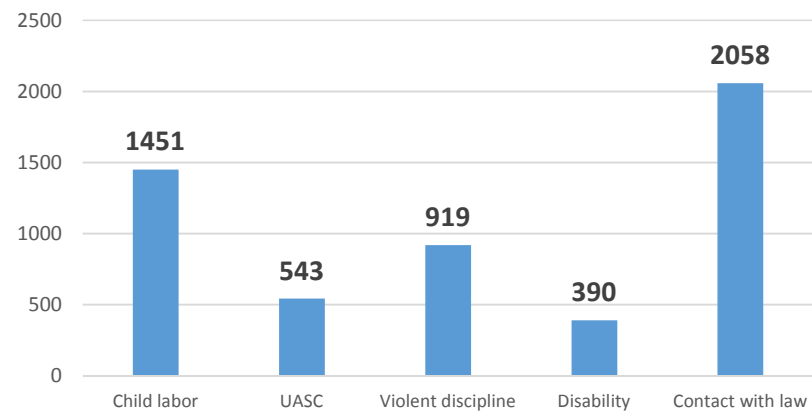
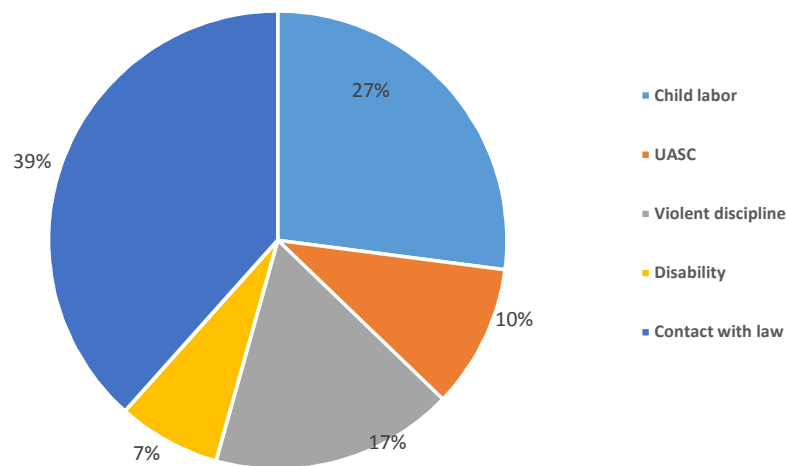
Governorates							
Akkar	B/H	Bekaa	Beirut	ML	Nab	Nt	St
670	831	673	493	1438	273	820	1489

#### Partners:

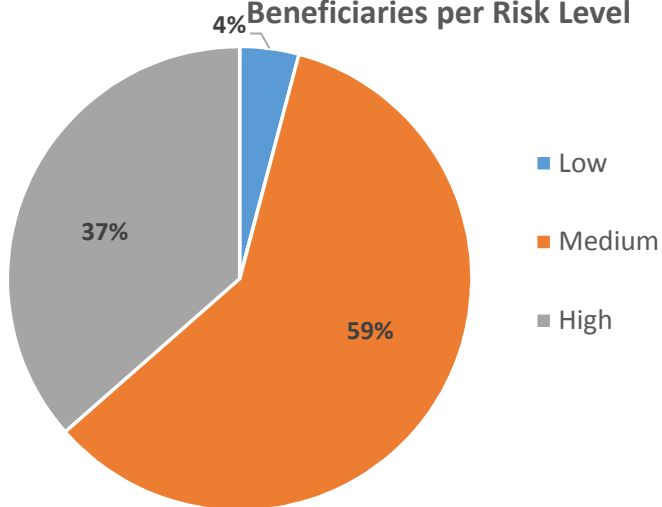
BZRD, DRC, Himaya, Intersos, IRC, KAFA, Makhzoumi Foundation, MAP, Mercy Corps, Mouvement Social, SCI, TdH - It, TdH - L, WCH, UNRWA.

**Indicator 5.2.3: # of boys & girls assisted through CP case management services**

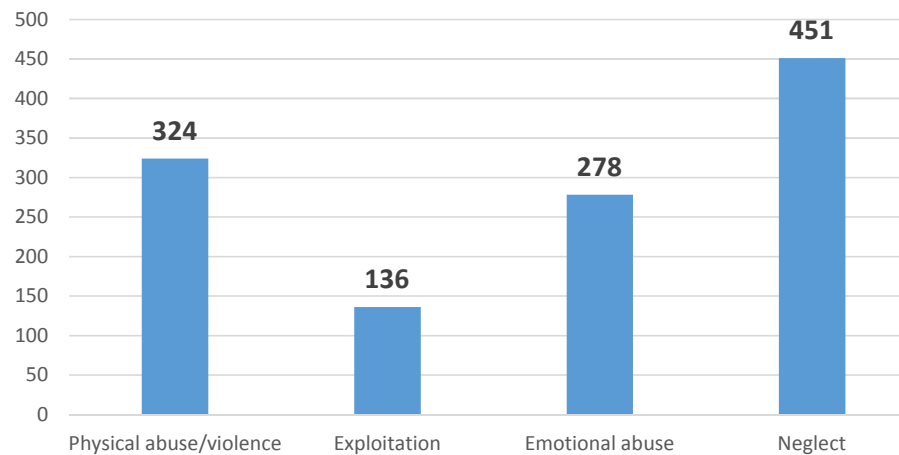
**Beneficiaries per Vulnerability**



**Beneficiaries per Risk Level**

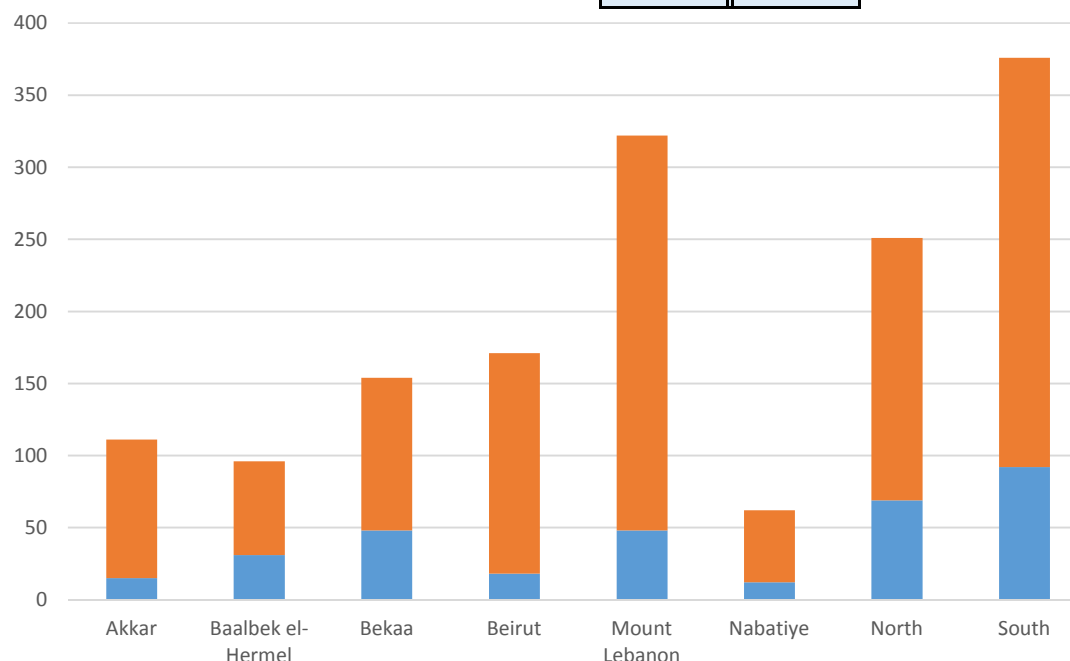
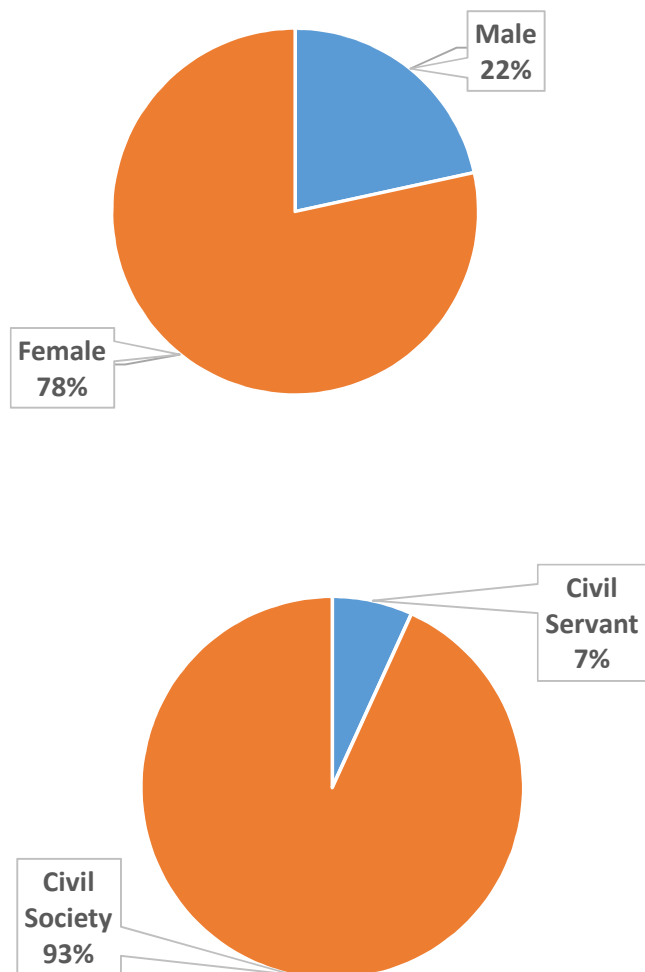


**Beneficiaries per Risk Type**



**Indicator 5.2.4: # of partners and government staff provided with general training on CP and children's rights**

Disaggregation	
Sex	Type
1543	691

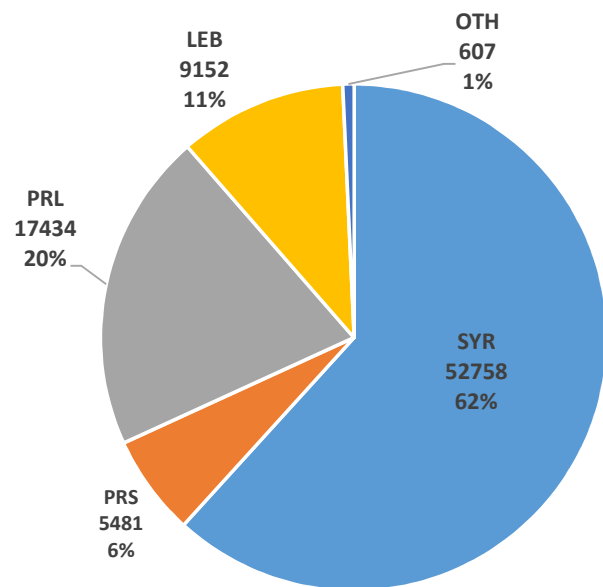


Governorates							
Akkar	B/H	Bekaa	Beirut	ML	Nab	Nt	St
111	96	154	171	322	62	251	376

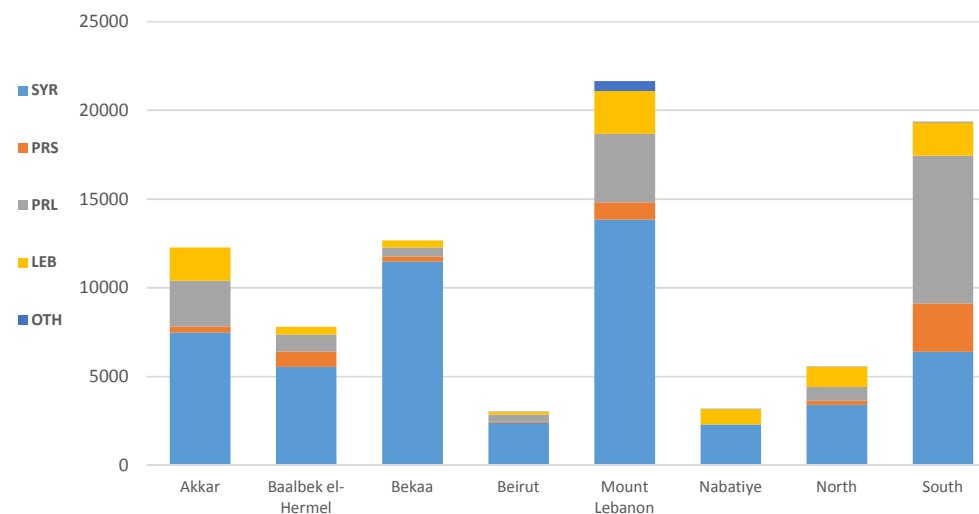
**Partners:**  
 DRC, DRC/LRC, Intersos, IRC, KAFA, Makhzoumi Foundation, Mercy Corps, Mouvement Social, RtP, SCI, TdH - It, TdH - L, WCH, WVI.

Output 5.3: Vulnerable children, families and communities supported to promote practices that protect them.

**Indicator 5.3.2: # of boys & girls accessing CP prevention (for boys & girls: community based PSS)**



Disaggregations	
Cohorts	Sex
85432	84883



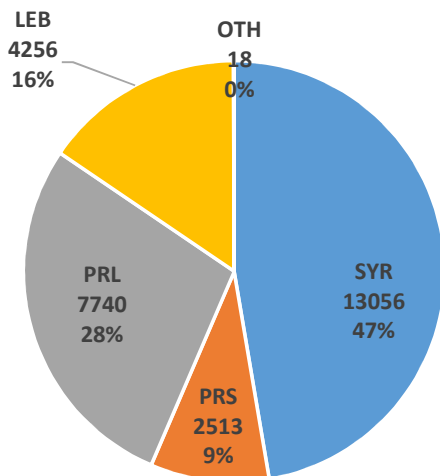
Aggregated per sex		Aggregated per age groups*		
Male	Female	0 - 5	6 - 11	12 - 17
48.6%	51.4%	4.1%	72.4%	23.5%

\* Disaggregation by age excludes data from UNICEF Pal. Prog.

Governorates							
Akkar	B/H	Bekaa	Beirut	ML	Nab	Nt	St
12264	7794	12658	3007	21658	3155	5544	19352

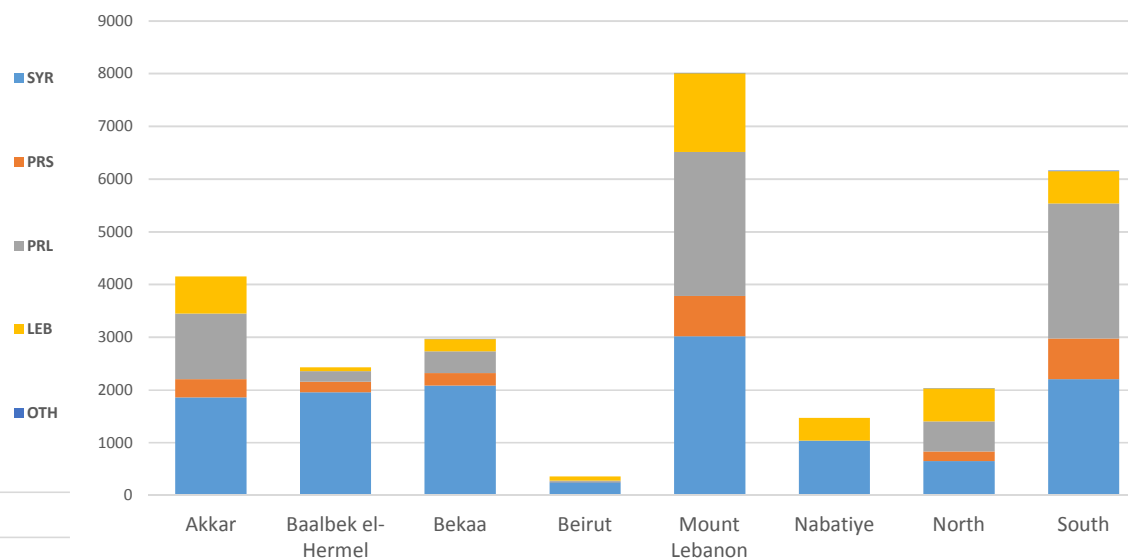
**Partners:** AMEL, ARCPA/Al-Jana, Beyond, BZRD, DRC, DRC/LRC, Himaya, Intersos, IR, IRC, KAFA, Makhzoumi Foundation, MAP, Mercy Corps, RtP, SaJ, SCI, SIF, TdH - It, TdH - L, WCH, WVI, YNCA .

**Indicator 5.3.3: # of caregivers accessing CP prevention (caregivers' programs)**

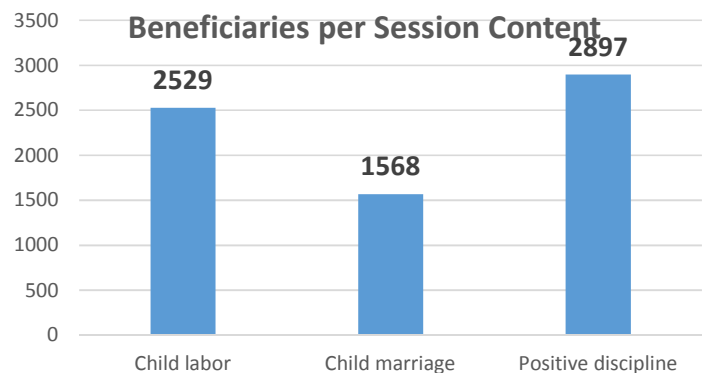


Activities per sex	
Male	Female
10.8%	89.2%

Disaggregations	
Cohorts	Sex
27583	27489

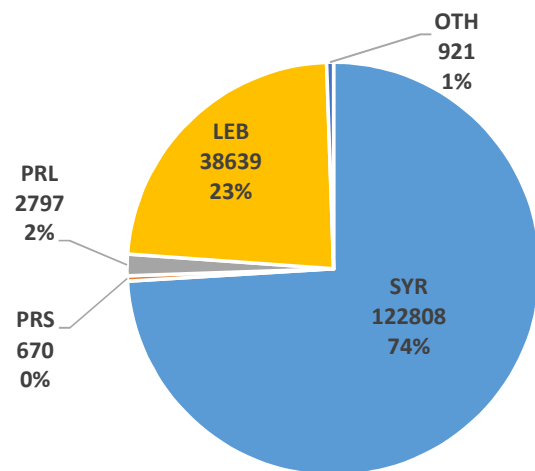


Governorates							
Akkar	B/H	Bekaa	Beirut	ML	Nab	Nt	St
4155	2429	2964	358	8017	1467	2031	6162



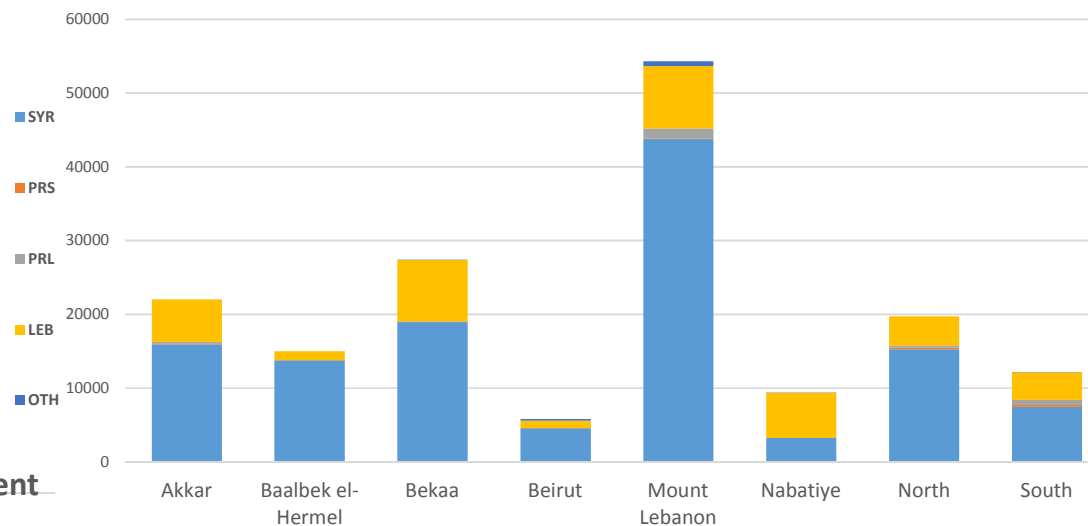
**Partners:** AMEL, ARCPA/AI-Jana, BZRD, Dorcas, DRC, DRC/LRC, Himaya, Intersos, IR, IRC, KAFA, MAP, Makhzoumi Foundation, Mercy Corps, Mouvement Social, Saj, SCI, SIF, TdH - It, TdH - L, WCH, WVI, YNCA.

**Indicator 5.3.4: # of girls & boys reached on key CP issues**

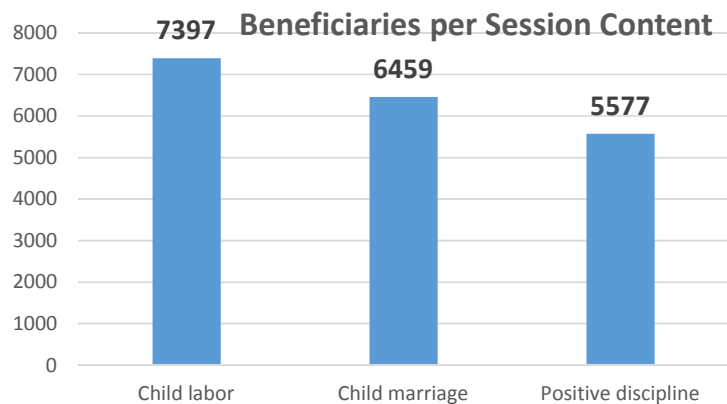


Activities per sex	
Male	Female
50.3%	49.7%

Disaggregations		
Cohorts	Sex	Age
165835	161815	145736

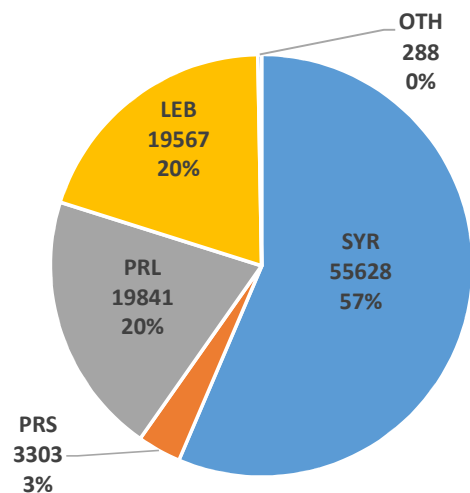


Governorates							
Akkar	B/H	Bekaa	Beirut	ML	Nab	Nt	St
22014	15016	27429	5801	54286	9394	19754	12141

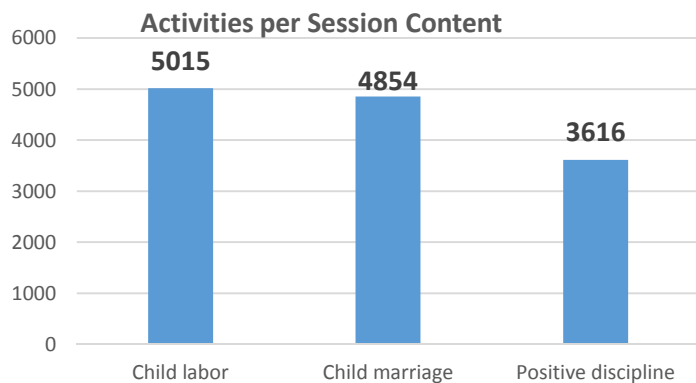


**Partners:** AMEL, Dorcas, DRC, DRC/LRC, Himaya, Intersos, IRC, KAFA, Makhzoumi Foundation, Mercy Corps, RtP, Saj, SCI, SIF, TdH - It, TdH - L, WCH, WVI, YNCA.

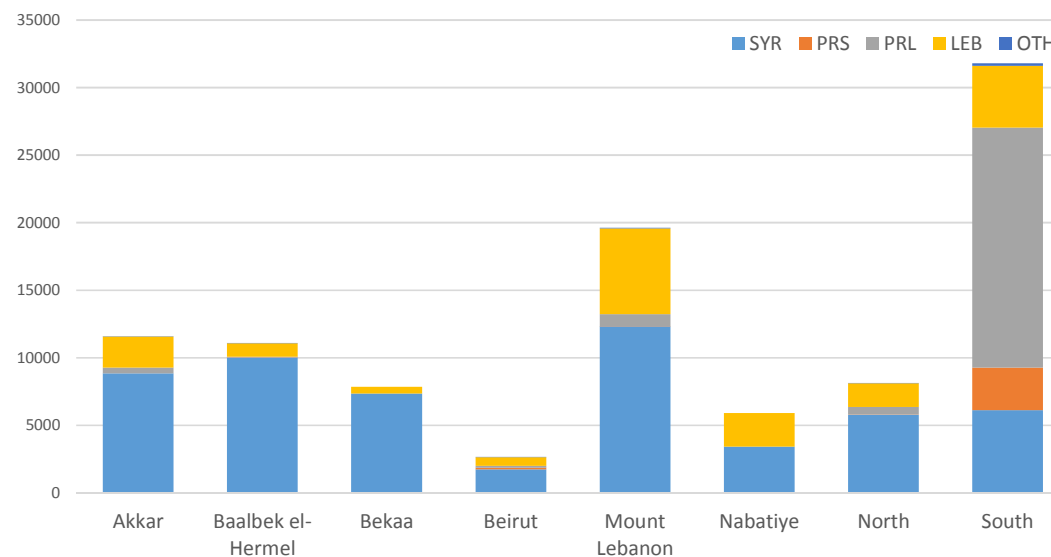
**Indicator 5.3.5: # of caregivers reached on key CP issues.**



Activities per sex	
Male	Female
43.4%	56.6%



Disaggregations	
Cohorts	Sex
98627	96978



Governorates							
Akkar	B/H	Bekaa	Beirut	ML	Nab	Nt	St
11562	11075	7858	2684	19606	5923	8120	31799

**Partners:** AMEL, BZRD, DRC, DRC/LRC, Himaya, Intersos, IRC, KAFA, Makhzoumi Foundation, Mercy Corps, Mouvement Social, RtP, SaJ, SCI, SIF, TdH - It, TdH - L, WCH, WVI, YNCA.





**OUTCOME 5: Boys & girls at risk and survivors of violence, exploitation and abuse have access to an improved and equitable prevention & response**

**Child Protection - All activities**  
**Progress to target**

