



United Nations
CERF

Central
Emergency
Response
Fund

Q2 QUARTERLY UPDATE

April–June 2015

CERF is managed by the United Nations Office for the Coordination of Humanitarian Affairs (OCHA)

Photo: CERF-funded United Nations Humanitarian Air Service (UNHAS) helicopter lands in Kerauja, Nepal, carrying food for earthquake affected families. Photo © WFP/Marco Frattini

"CERF is one of the biggest game changers [for humanitarian leadership] that I have seen in my 10 years in leadership roles in the field."

Robert Piper

Former UN Regional Humanitarian Coordinator for the Sahel

At the UN ECOSOC Humanitarian Affairs Segment in Geneva, June 2015

Q2 SUMMARY

The Emergency Relief Coordinator (ERC) allocated \$99.2 million from CERF to support emergency responses in 20 countries during the second quarter of 2015. This brought total allocations for 2015 to \$202.7 million.

Some \$86.6 million from CERF's Rapid Response Window supported efforts in response to conflicts in Ukraine and Yemen, a measles outbreak in Sudan and natural disasters in Chile, Madagascar, Nepal and Peru. Of the \$98.5 million that was set aside in the first quarter of 2015 to sustain aid operations in underfunded crises, the remaining \$12.6 million in projects were approved in the second quarter.

By the close of the second quarter of 2015, donors had contributed \$250.5 million to CERF for 2015, bringing total contributions to over 63 per cent of total pledges for the year. Despite efforts to mitigate potential losses related to currency fluctuations, CERF has adjusted the previously reported US dollar value of pledges to the Fund to account for a significant drop in the value of several European currencies against the dollar this year.

In the context of global discussions around the future of aid and in light of the Fund's upcoming 10-year anniversary, CERF continued to work with its partners to ensure it remains well-placed to support global humanitarian action in the future.

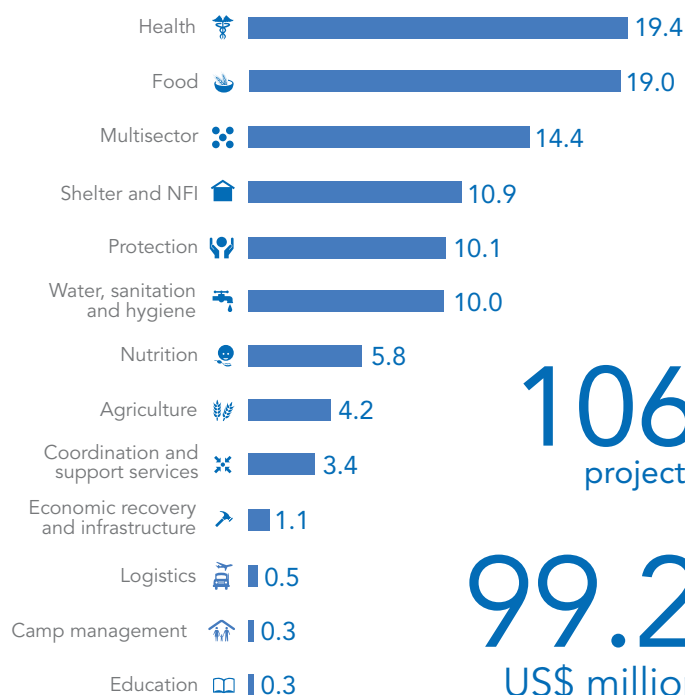
TOP AMOUNTS APPROVED IN Q2, PER EMERGENCY (US\$ million)

\$14.9 to Nepal for recovery efforts following the devastating earthquake (April).

\$12.5 to Yemen for life-saving support for people affected by the crisis (June).**

\$9.9 to Nigeria for emergency assistance for people affected by violence (April).

Q2 2015 CERF projects approved by sector (in US\$ million)



2ND QUARTER 2015 HIGHLIGHTS (US\$)

Pledges for 2015
As of 30 June 2015

388.6*
US\$ million

Contributions received by end Q2
For 2015, as of 30 June 2015

250.5
US\$ million

Total allocations by end Q2
1 January to 30 June 2015

202.7
US\$ million

Source: OCHA, CERF unless noted otherwise. * Pledged amounts have decreased due to exchange rate fluctuations. ** Includes only projects approved as of 30 June 2015.

Q2 RAPID RESPONSE ALLOCATIONS

The ERC approved \$86.6 million through CERF's Rapid Response Window in the second quarter of 2015. These funds supported aid agencies responding to humanitarian crises in 14 countries.

The highest amount during the reporting period from 1 April to 30 June, \$14.9 million, was approved for emergency response projects in Nepal following the devastating earthquake in April. CERF funds also kick-started relief operations in response to other natural disasters, including a drought in Madagascar (\$2.2 million) and floods in Peru (\$914,395) and Chile (\$777,854).

Other rapid response grants approved in the second quarter went to Yemen (\$12.5 million), Nigeria (\$9.9 million), Rwanda (\$8 million), Tanzania (\$7.7 million), Cameroon (\$7.1 million), Niger (\$6.7 million), South Sudan (\$5.6 million), Ukraine (\$4.9 million), Chad (\$3.5 million) and Sudan (\$2 million).

NEPAL

In April 2015, a devastating earthquake killed more than 5,000 people in Nepal. Another 10,000 Nepalese were injured and more than 8 million people were left in urgent need of humanitarian assistance.

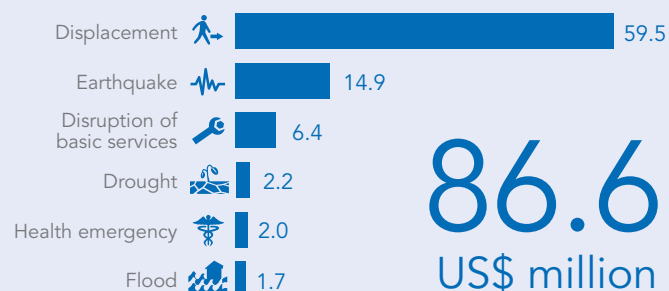
Within 48 hours of the disaster, Under-Secretary-General for Humanitarian Affairs (USG) and ERC, Valerie Amos, announced a US\$15 million from CERF, saying: "With the death toll rising and millions of people affected, it's a race against time as humanitarian agencies work around the clock to reach people and communities."

Jamie McGoldrick, Humanitarian Coordinator in Nepal said: "We needed cash urgently; funds to get the relief operation going as soon as possible. CERF enabled us to scale up operations before the funding from other donors arrived."

With funds immediately available, aid agencies including the International Organization for Migration (IOM), the UN Children's Fund (UNICEF), the UN Population Fund (UNFPA), the World Food Programme (WFP) and the World Health Organization (WHO), were able to provide food, emergency shelter, clean water and healthcare for hundreds of thousands of people.

"The availability of CERF immediately following the earthquake contributed significantly to UNICEF's rapid humanitarian response

Q2 2015 RAPID RESPONSE ALLOCATIONS BY EMERGENCY TYPE
Allocations, as per approved project, by emergency type (in US\$ million)



... UNICEF provided critical health, immunization, child protection, water and sanitation services to thousands of people in urgent need in the most affected districts of Nepal" said Karin Hulshof, UNICEF Regional Director for South Asia.

YEMEN

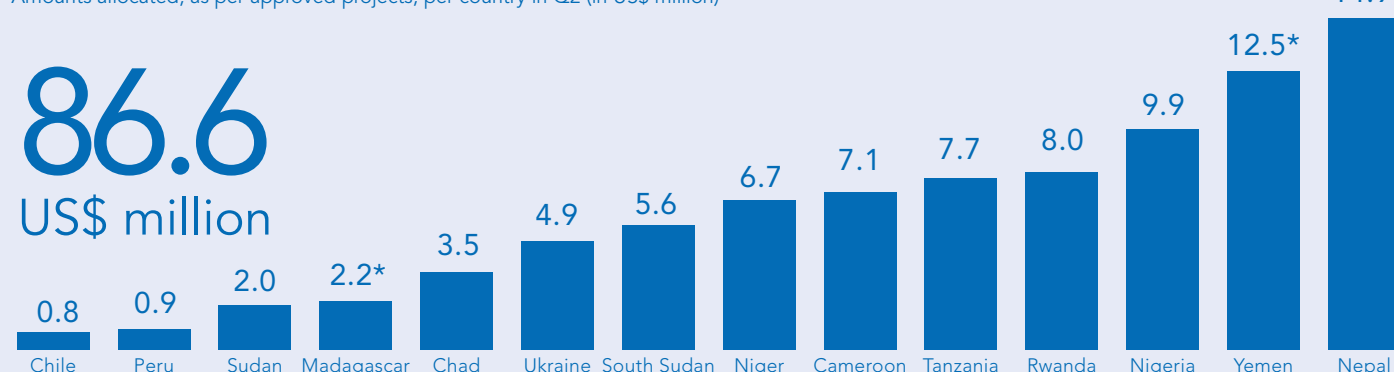
The conflict in Yemen has intensified significantly since March this year, leaving over 21 million Yemenis – 80 per cent of the country's population – in need of humanitarian assistance. In Q2, the ERC allocated \$26.7 million to support relief efforts in the country, of which \$12.5 million was approved by the end of the second quarter and the remaining \$14.2 million in early July.

In May, CERF provided \$1.4 million for emergency life-saving assistance for thousands of people, and then another \$25 million in June and July. When responding favourably to the second request, the ERC said: "Innocent civilians in Yemen are paying a terrible price. They face daily airstrikes, shelling and fighting while medical supplies, fuel and food are running out, and basic services have collapsed."

The CERF allocation has supported the most critical relief projects including providing fuel, medicine, emergency supplies, water and sanitation and nutrition programmes to people in need. It is also helping aid agencies deliver lifesaving assistance through increased humanitarian air services and improved port facilities.

2ND QUARTER 2015 RAPID RESPONSE ALLOCATIONS BY COUNTRY

Amounts allocated, as per approved projects, per country in Q2 (in US\$ million)



* Allocations marked with an asterisk (*) have had projects approved before or after 1 April - 30 June 2015.

Q2 UNDERFUNDED EMERGENCIES

2015 1ST ROUND

The bulk of the \$98.5 million that was set aside for the first round of Underfunded Emergencies Window (UFE) allocations in 2015 was disbursed in the first quarter of the year (\$75.9 million).

The remaining \$12.6 million in projects were approved in Q2 for emergency responses in Colombia, the Democratic Republic of the Congo, Iraq, Jordan, Lebanon and Turkey.

2015 2ND ROUND

In the second quarter of 2015, the CERF secretariat started work on the second round of 2015 UFE allocations for which \$70 million was set aside.

Following a detailed analysis of global funding coverage and vulnerability indicators, and in consultation with a broad range of humanitarian partners, the ERC decided to provide life-line funding for chronically underfunded aid operations where millions of people have been forced from their homes by violence and instability.

Some \$21 million will go to emergency operations for people displaced by violence in Sudan's Darfur region. Of that amount, agencies in Sudan will receive \$15 million and humanitarian partners in Chad will receive \$6 million.

Aid operations targeting people affected by conflict and climatic shocks in three countries in the Horn of Africa – Somalia (\$20 million), Ethiopia (\$10 million) and Eritrea (\$3 million) – will receive \$33 million.

Humanitarian partners in Bangladesh (\$3 million) and Myanmar (\$5 million) will receive funding to provide life-saving aid for neglected communities and displaced people in Myanmar and Bangladesh.

In Afghanistan, where a lack of adequate funding has forced relief agencies to reduce their operations at a time when life-saving needs are increasing because of intensified fighting, some \$8 million will help sustain relief efforts.

While the funds from CERF's Underfunded Emergencies Window will help sustain life-saving relief and humanitarian operations in some of the world's most protracted and chronically underfunded emergencies, additional funding is urgently needed.

Q2 CONTRIBUTIONS OVERVIEW

During Q2 of 2015, CERF received \$146.8 million in contributions for 2015. This brought total contributions for 2015, including funds received for 2015 in late 2014, to \$250.5 million. This is 64.4 per cent of the \$388.6 million pledged for 2015 (as of 30 June, with the valuation of the outstanding pledges as per UN Operational Rates of Exchange on that same day).

CERF also received \$500,000 in outstanding commitments for 2014 in Q2 of 2015.

value of pledges to the Fund to account for a significant drop in the value of several European currencies against the dollar this year. Of CERF's top 10 donors, eight pay in euros or other European currencies.

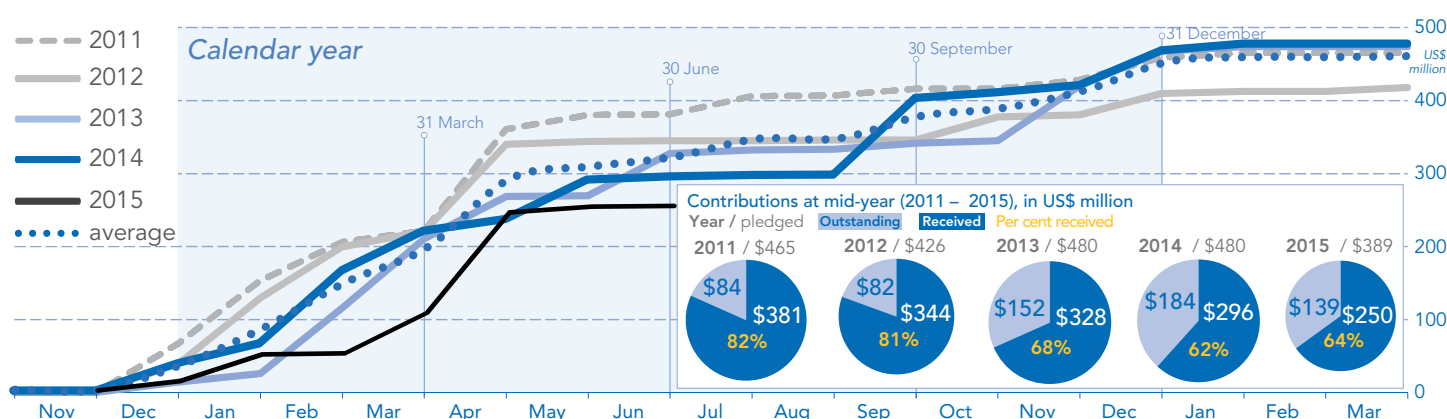
To reflect the realized loss of actual US dollar contributions received for 2015 compared with values pledged in December 2014, the total amount pledged for 2015 as reported in Q1 (\$420 million) has been adjusted to \$388.6 million. CERF has an annual funding target of \$450 million.

CURRENCY FLUCTUATIONS

Despite efforts to mitigate potential losses related to currency fluctuations, CERF has adjusted the previously reported US dollar

To contribute to CERF, contact the CERF secretariat (cerf@un.org) or go to www.unocha.org/cerf/our-donors/how-donate.

Cumulative contributions to CERF by month against the CERF fiscal year (January to December) for the period 2011 – 2015
In US\$ million, data as of 30 June 2015



Q2 CERF SECRETARIAT UPDATES

CERF ADVISORY GROUP UPDATE

The CERF Advisory Group (AG), which provides the UN Secretary-General with policy guidance on the use and impact of CERF, held its first 2015 meeting on 28 and 29 May in Geneva. The meeting was hosted by the Swiss Government.

Deputy Emergency Relief Coordinator, Ms. Kyung-Wha Kang, updated the Group on CERF operations. The Members had the opportunity to interact with Resident and Humanitarian Coordinators from Colombia and Eritrea, and the Resident Coordinator from Sierra Leone; they discussed, among other, the future of CERF and highlighted the importance of strategically positioning the Fund in the broader context of humanitarian financing. Other key highlights of the meeting can be found [here](#). The next AG meeting will be held in October in New York.

ECOSOC SIDE EVENT

The newly-appointed ERC, Mr Stephen O'Brien, chaired a lively debate on the future of CERF with representatives of the humanitarian community at the UN Economic and Social Council's three-day Humanitarian Affairs Segment in Geneva on 18 June. Panellists included UN agency, NGO, donor and private sector representatives.

The ERC opened the discussion explaining that in a relatively short time, CERF had become a valued and reliable partner for the global humanitarian community. He stressed however, that

the emergence of new global challenges and a rapidly evolving humanitarian landscape raised the question of how the Fund can build on its core strengths and ensure it is well-placed to support global humanitarian action in the future.

Mr O'Brien emphasized the timeliness of the conversation, particularly in light of the Fund's upcoming 10-year anniversary and crucial global discussions around the future of aid such as the High-Level Panel on Humanitarian Financing and the World Humanitarian Summit. Find out more about the event [here](#).



Panel members discussing the future of CERF at the ECOSOC Humanitarian Affairs Segment in Geneva in June 2015. Credit: OCHA

CERF REPORTS

The [Report of the Secretary-General on CERF \(A/70/96\)](#) and the [CERF Annual Report](#) for 2014 were published in June. Both documents are available on the CERF website at cerf.un.org.

Q2 SUMMARY TABLES

Approvals: 2ND quarter 2015 (by approval date/emergency, in US\$)

Approval dates	Emergency / window		Amount
1 – 7 Apr	DR of the Congo*	UFE	3,100,001
1 – 2 Apr	Iraq*	UFE	2,264,962
1 Apr	Turkey*	UFE	5,607,344
2 Apr	Colombia*	UFE	244,996
2 Apr	Jordan*	UFE	400,000
2 Apr	Lebanon*	UFE	1,003,740
2 Apr	Madagascar*	RR	2,190,794
23 – 28 Apr	Niger	RR	6,710,140
24 Apr – 1 May	Cameroon	RR	7,066,174
29 Apr – 4 May	Nigeria	RR	9,889,075
4 – 6 May	Nepal	RR	14,913,716
8 – 13 May	Chile	RR	777,854
8 May	Sudan	RR	1,991,765
7 – 22 May	Chad	RR	3,517,882
18 – 20 May	Rwanda	RR	7,984,746
22 May – 26 Jun	Yemen*	RR	12,462,531
27 May – 2 Jun	Tanzania	RR	7,656,005
2 – 4 Jun	South Sudan	RR	5,616,616
3 – 5 Jun	Peru	RR	914,395
17 – 19 Jun	Ukraine	RR	4,920,172
	Total		99,232,908

* Approval dates refer to dates when the first and last projects within the allocation were approved by the Emergency Relief Coordinator. Allocations marked with an asterisk (*) have had projects approved before or after 1 April - 30 June 2015.

Contributions: 2ND quarter 2015 (by country/pledge year, in US\$)

Date	Donor	For year	Amount
Apr			
1	Norway	2015	47,614,274
7	Chile	2015	30,000
9	Lithuania	2015	21,655
13	United Arab Emirates	2015	1,000,000
17	Republic of Korea (1/2)	2015	4,000,000
21	the Netherlands	2015	59,169,000
24	Germany	2015	21,459,980
27	Switzerland (1/2)	2015	4,151,100
May			
4	Finland	2015	7,770,000
5	Colombia	2015	200,000
14	Monaco	2015	52,303
Jun			
3	Iceland	2015	100,000
8	Mexico	2014	500,000
8	Mexico	2015	250,000
16	China	2015	500,000
25	Peru	2015	4,167
	Q2 direct private contributions	2015	17,546
	Total		146,840,026

Amounts in US\$ as received by CERF between 1 April - 30 June 2015.