

2013 SUMMARY

For latest figures visit cerf.un.org

Member States and the private sector contributed \$474 million to CERF for 2013—the highest-ever annual total. An additional \$6.7 million was pledged and remains outstanding.

CERF received more than \$502 million in contributions during 2013, including payments for 2012 and early funding for 2014. See table on the right for more details.

In 2013, the Emergency Relief Coordinator (ERC) allocated a record \$482 million from CERF for life-saving humanitarian activities in 45 countries and territories. More than \$307 million of that amount was allocated for humanitarian activities in new or rapidly deteriorating crises through CERF's rapid response window and \$175 million was allocated to sustain aid operations in neglected crises through the Fund's underfunded emergencies window. The ERC also approved a \$27 million loan for the World Food Programme for Syria and neighbouring countries.

More than 81 per cent of CERF funding went to humanitarian partners responding to complex emergencies, and 19 per cent was allocated in response to natural disasters. In 2013, CERF was crucial in supporting coordinated humanitarian action and strengthened leadership in nearly every major emergency worldwide. A detailed overview of 2013 CERF allocations is available overleaf.

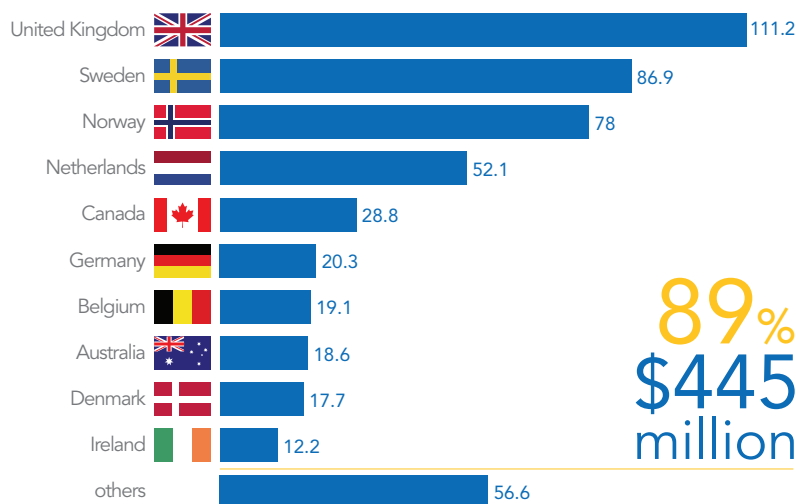
CONTRIBUTIONS RECEIVED IN 2013

In US\$, received between 1 January and 31 December 2013

DONOR	for 2012	for 2013	for 2014
UN Member States	10,624,610	452,419,819	37,589,954
Andorra		19,646	
Argentina	6,744	70,000	
Armenia		5,000	
Australia		18,566,600	
Austria		271,600	
Azerbaijan		39,820	
Belgium	4,915,875	14,219,100	
Bhutan	1,500	1,500	
Brazil		1,000,000	
Canada		28,809,407	
Chile		30,000	
China		500,000	
Colombia		100,000	
Czech Republic			116,213
Denmark		17,667,064	
Estonia			135,580
Finland		9,111,900	
France		393,300	
Germany		20,313,000	
Greece		50,000	
Guyana		2,184	
Hungary		20,098	48,047
Iceland	50,000	130,000	
India		500,000	
Indonesia		200,000	
Ireland			12,183,300
Italy		653,350	
Japan		2,987,013	
Korea, Republic of		2,900,000	
Kuwait		500,000	
Latvia		41,027	
Liechtenstein		272,242	
Luxembourg		5,747,126	
Mexico		350,000	
Monaco		64,990	
Mongolia		10,000	
Montenegro		3,000	
Morocco		5,000	
Mozambique		2,000	
Myanmar	10,000		
Netherlands		52,124,000	
New Zealand		1,670,425	
Norway		68,265,453	9,693,173
Peru		25,000	
Poland		248,162	
Qatar	3,000,000	1,500,000	
Romania		34,348	
Russian Federation		1,000,000	
San Marino	27,291		
Saudi Arabia		450,000	
Serbia		7,000	
Singapore		50,000	
South Africa		274,469	243,641
Spain	2,608,200	6,617,500	
Sri Lanka		10,000	
Sweden		71,687,729	15,170,000
Switzerland		7,549,267	
Turkey		50,000	
United Arab Emirates		70,000	
United Kingdom		111,230,500	
United States		4,000,000	
Uruguay	5,000		
Observers		5,000	
SMO of Malta		5,000	
Regional Authorities		401,430	410,100
Government of Flanders		401,430	410,100
Private contributions		10,881	
Baha'i International C.		10,000	
Private donations		881	
Grand Total	10,624,610	452,832,131	38,000,054

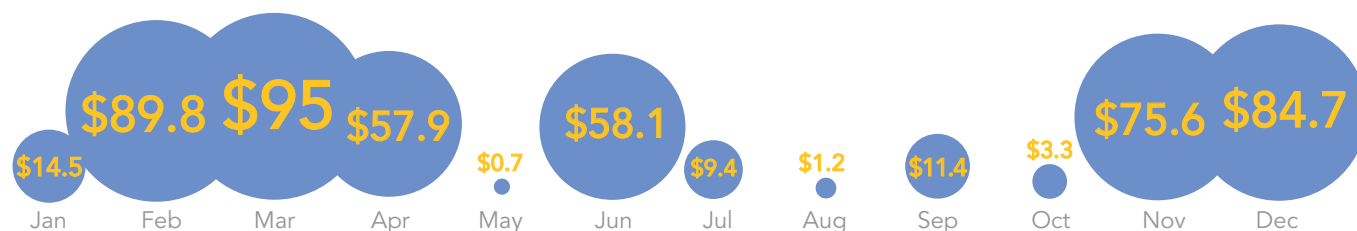
TOP 10 CONTRIBUTORS IN 2013

In US\$ million, received between 1 January and 31 December 2013



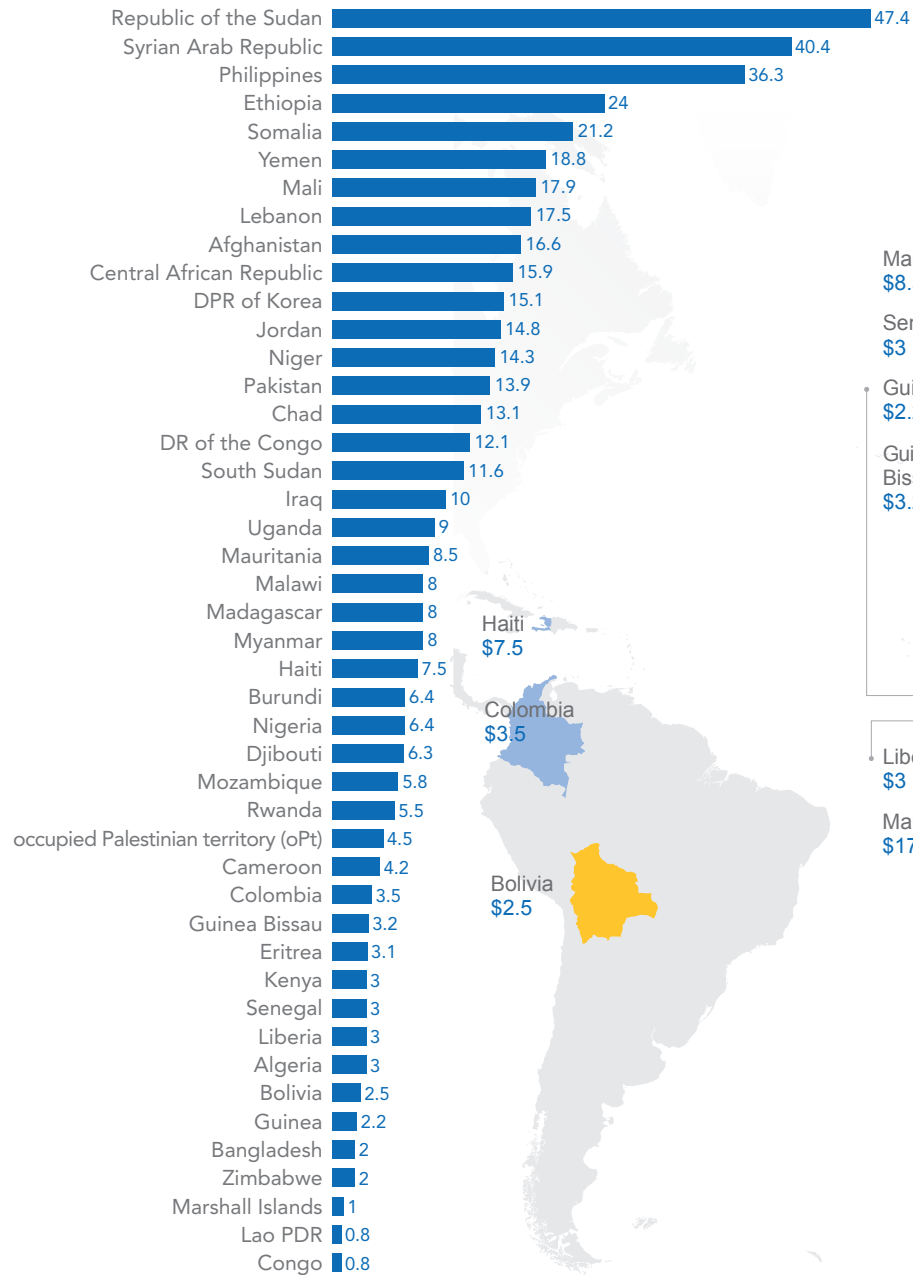
DISTRIBUTION OF CONTRIBUTIONS RECEIVED IN 2013

In US\$ million, received between 1 January and 31 December 2013



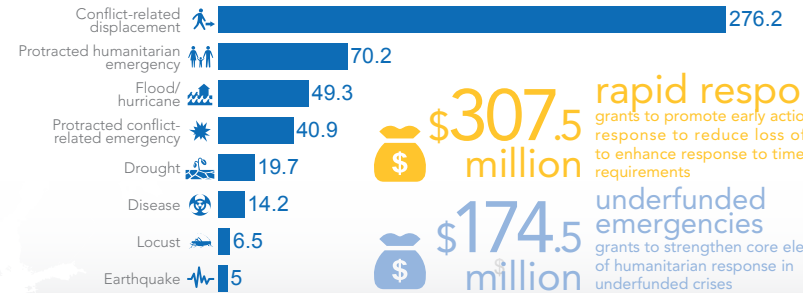
CERF CENTRAL EMERGENCY RESPONSE FUND 2013 ALLOCATIONS

Total 2013 CERF allocations by country (in US\$ million)



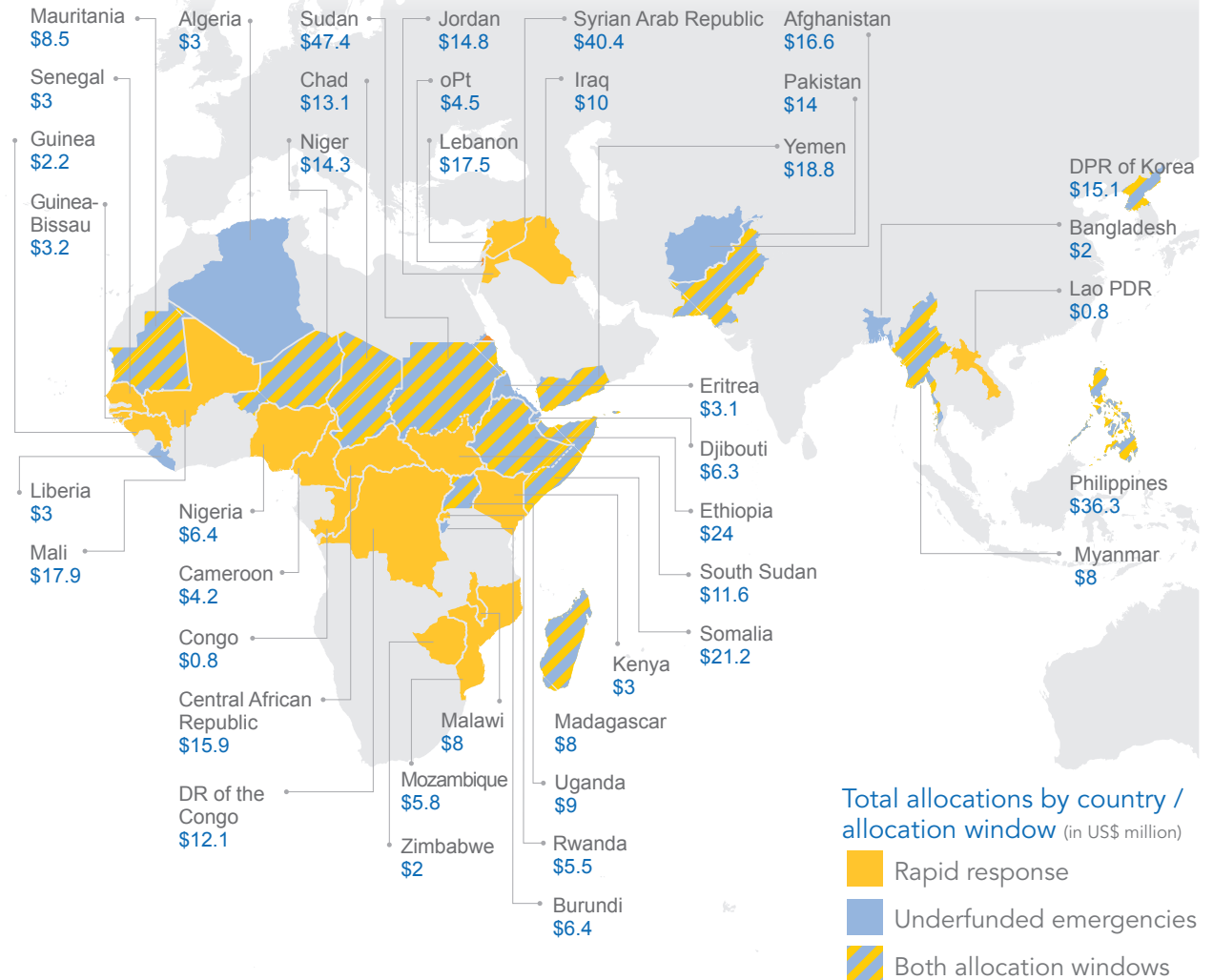
\$482 million

2013 CERF allocations by emergency type (in US\$ million)



\$307.5 million rapid response grants to promote early action and response to reduce loss of life, and to enhance response to time-critical requirements

\$174.5 million underfunded emergencies grants to strengthen core elements of humanitarian response in underfunded crises



Total allocations by country / allocation window (in US\$ million)

- Rapid response
- Underfunded emergencies
- Both allocation windows

The boundaries and names shown and the designations used on this map do not imply official endorsement or acceptance by the United Nations.