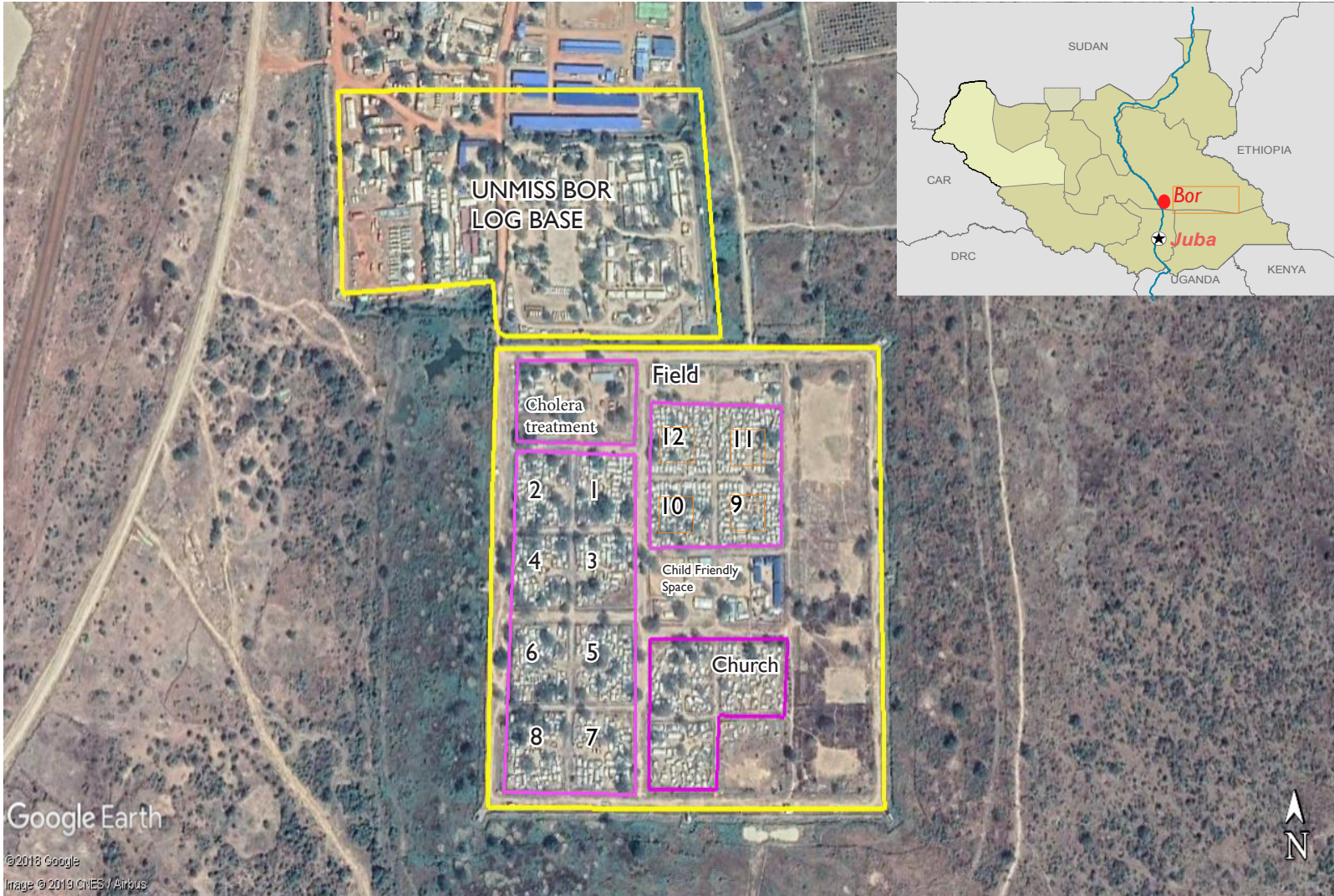
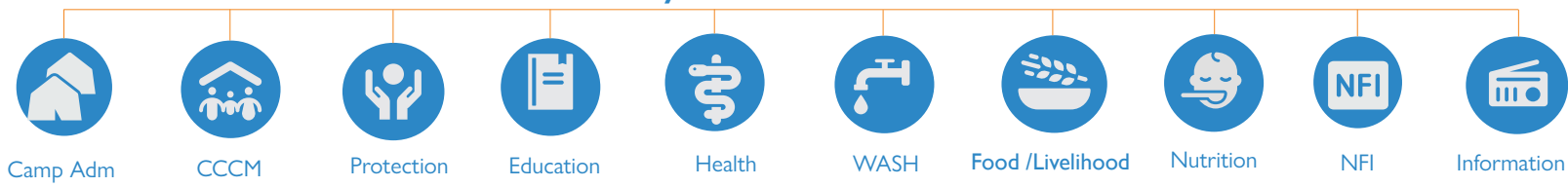
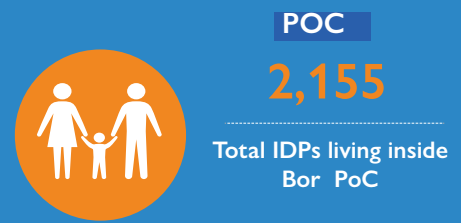


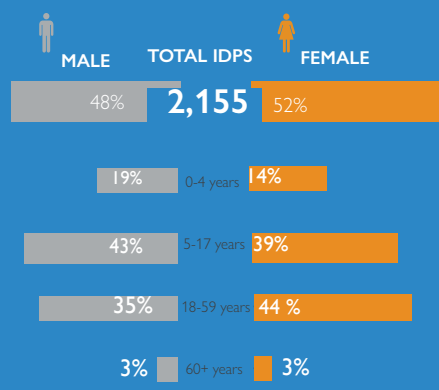
Key areas of Intervention



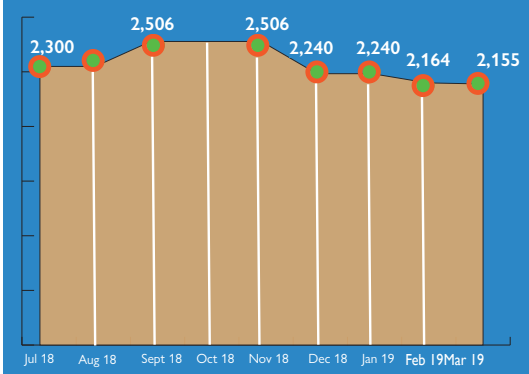
POPULATION DEMOGRAPHY




POPULATION PYRAMID



MONTHLY POPULATION FLOW



SECTOR	ORGANIZATION	SERVICES/ACTIVITIES	FOCAL PERSON	EMAIL	PHONE	Position
 Camp Administration	RRP/UNMISS	•Camp Administration and Security				
 CCCM	ACTED (Camp Management Agency)	<ul style="list-style-type: none"> • Coordinating services (delivered by NGOs and other service providers) • Establishing governance and community participation /mobilization mechanisms. • Ensuring the maintenance of camp infrastructure • Information management (data and maps) • Advocating for, or providing, key services in gap areas • Monitoring the service delivery of other providers in accordance with agreed standards • Building host community relationships to ensure peaceful co-existence of populations 	Chuol Lam Beliew / Camp Manager	chuol.beliew@acted.org	(0) 925 181 726 , 0 914 571 838	Camp Manager
			Joseph Nhial / CwC Officer	bor.cwcofficer@acted.org.	(0) 927 709 911	CwC Officer
	IOM		Gatluak Luk	bor.campofficer@acted.org	(0) 925 181 726 / 0914 571 838	Info & Infra Officer
			Noel Wani	nwani@iom.int	(0) 927 709 911	CCCM State Focal Point
			Joseph Abere	jabere@iom.int	(0) 920 083 209	
 Protection	ICRC	<ul style="list-style-type: none"> • Restoration /maintaining family links through phone calls sessions or Red cross Messages (RCMs). • Family Tracing and Reunification-taking tracing requests when there is sufficient information enabling tracing of family members.For vulnerable cases (such as unaccompanied or separated children ,vulnerable adults,disavled,elderly),family reunifications are organized. 	Hiro Yabusaki	hyabusaki@icrc.org	(0) 921 758 942 , 0912 179 888	Field Delegate
	UNHCR		Stella Akabwai Ariko	akabwai@unhcr.org	(0) 922875024	Protection Officer
			Komma Godfrey Andrugaa	andrugaa@unhcr.org	(0) 927 395 276 , 0922 122 424	Field Officer
 Education	INTEROS	<ul style="list-style-type: none"> • Education in Emergency activities for children (6-18 years old), levels from P1 to P8. • Distribution of school supplies • Recreational activities/events for children and youth • Promotion of Schools/Learning Spaces as Zones of Peace 	Abu Badasi Sesay	education.js.us.ross@intersos.org	(0) 920524601	
			Mawut Majak Deng	eduofficer.bor.ross@intersos.org	(0) 927 654 654 / 0916704878	
 Health	Health Link	<ul style="list-style-type: none"> • Primary Health Care Clinic services inpatient/ outpatient treatment • Routine EPI activities and OPV/VIT • Maternal Health services • Nutrition Action Program • Outreach activities and awareness raising 	Wani Paulino	wani@healthlinksouthsudan.org_ wanipaulino1@gmail.com	(0) 929 688 834	Project Officer- Bor PoC
			Adrawa Saviour	piusadrawasaviour@gmail.com	(0) 921 635 190	Nursing Officer
 Wash	IAS	<ul style="list-style-type: none"> • Nutrition screening (MUAC) for children and pregnant and lactating women • Outpatient Therapeutic care for children • Targeted supplementary feeding for children and Pregnant and lactating women • Health and nutrition education with infant and young child feeding service 	Victor Syambi	victor.syambi@ias-intl.org	(0) 921235366	WASH Advisor
			Luka Wani	luka.wani@ias-intl.org	(0) 925 089 132 / 0 916 039 090	Project Coordinator
			Khalid Abbas	khalid.abbas@ias-intl.org	(0) 920 100 024 / (0) 914 674 980	WASH program officer

SECTOR	ORGANIZATION	SERVICES/ACTIVITIES	FOCAL PERSON	EMAIL	PHONE	Position
 Food Sustainability & Livelihood (FSL)	NRC	<ul style="list-style-type: none"> • General Food Distribution 	Alex Moga Simon	alex.simon@nrc.no	(0) 925862680	
			Rebecca Amer	Rebecca.aleer@nrc.no	(0) 924476185	GFD supervisor
	WFP	<ul style="list-style-type: none"> • Grinding Mill Management 	Christopher Knight	christopher.knight@wfp.org	(0) 923 099 036	Senior Programme Assistant
			David Elisa	david.elisa@wfp.org	(0) 925 590 271	Senior Programme Assistant
 Nutrition	Save the Children	<ul style="list-style-type: none"> • Nutrition screening (MUAC) for children and pregnant and lactating women • Outpatient Therapeutic care for children • Targeted supplementary feeding for children and Pregnant and lactating women • Health and nutrition education with infant and young child feeding service 	Israel Sango	israel.sango@savethechildren.org		
			John Both	john.both@savethechildren.org	(0) 925 242 004	CMAM Supervisor
 Child Protection	Save the Children	<ul style="list-style-type: none"> • Child Friendly Space (CFS) operation – Structured PSS through facilitation of recreational activities, awareness raising and individual support. • Case Management; Family Tracing and Reunification. The registration of unaccompanied and separated children, tracing and monitoring services, and inter -agency reunification processes. • Child protection help desk operation: case management services: The CP help desk is available to report any concerns for a vulnerable child. The services include reporting to internal SCI case management system, active referrals to services such as medical or nutritional support and individual case support for children and caregivers. 	Mabiei Peter Kelei	peter.kelei@savethechildren.org	(0) 927 353 333	Acting Assistant Manager CP
			Madol Majak Anyieth	madol.maliik@savethechildren.org	(0) 925 337 569	CP IMS Data Entry Clerk
			Awuoi Deng Chol	awuoi.deng@savethechildren.org	(0) 925 218 309 , 0 916 740 326	Child Protection Mobiliser
			Zechariah John Tut		(0) 920 071 144	FTR Case Worker
 Non Food Items (NFI)	INTERSOS	<ul style="list-style-type: none"> • Provision of general NFI needs assessment and distributions • Working closely with camp management on verification of community feedback mechanism NFI related cases 	Beneth Dennis Surur	nfis.jonglei.south.sudan@intersos.org	(0) 924 317 363	
 Gender-Based Violence	INTERSOS	<ul style="list-style-type: none"> • Case Management and referral: Survivors of Gender- Based Violence such as: sexual assault, rape (including, but not limited to domestic Violence), Physical Assault, Forced- Marriage, Emotional abuse; and receiving appropriate survivor-centered care and support through psychosocial support counseling • Community Engagement or Mobilization: community- based prevention activities where communities are informed through awareness raising sessions of GBV, including immediate health related consequences, available GBV services, and promoting safe reporting environment by following GBV guiding principles. • Life Skills Activities: life skills activities in the Women Friendly space as tea ,bread making and embroidery. • Distribution of dignity kits and PEP kits 				
 Psycho Social Support	ALARM	<ul style="list-style-type: none"> • Psychosocial Support activities: Through recreational activities and Life Skills and receiving cases of referral from other actors for support • 8 lay counselors. 2 lay counselors are part of the GBV referral system. 2 counselors are present every morning at the ALARM PSS tent to receive walk in cases. Lay counselors also provide home visits and referrals when necessary. • Support groups: Inter Faith Group, Educators Group, Cultural Group, Women Group, Sports Group, Mediation Group • Training in Conflict management, transformation and peace building for PSS facilitators 	Annonciata Nyiraborori	annonciata@alarm-southsudan.org	(0) 925 811 363 , (0) 914 770 408	PSS Field Manager
			Bitid Chot Deng		(0) 925 581 749	Team Leader of POC-PSS Center
			Rev. William Tut Diet		(0) 912 784 635	MHPSS Community Linkage/Peace Focal Point
 Information Services for Humanitarians	REACH	<ul style="list-style-type: none"> • Provision of mapping services to humanitarian partners including reference maps, address system maps, terrain elevation maps of the PoC • Assessment activities: primary data collection targeting PoC residents who receive regular information from their pre-displacement location or "Area of Origin"; using a standardized survey tool and FGDs to capture displacement trends, population needs, and access to basic services in hard to reach areas of Jonglei State 	Duoth Biel	bor.field-coordinator2@reach-initiative.org	(0) 925 691 618	Field Coordinator