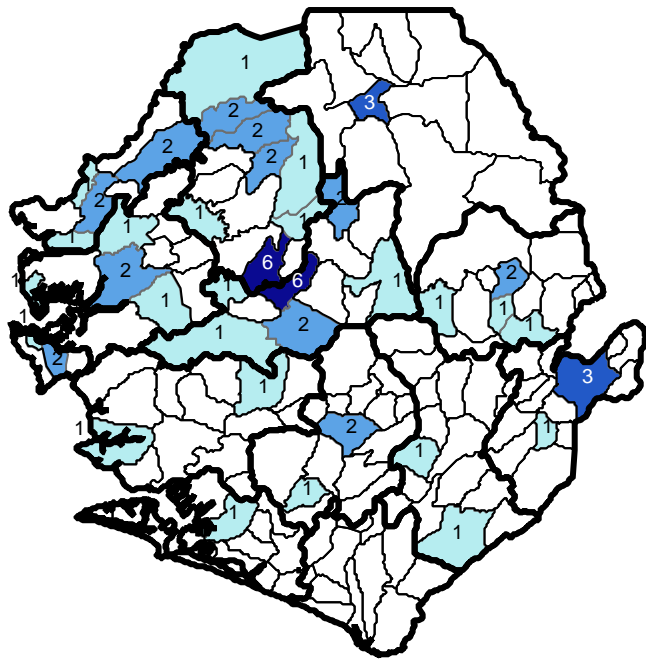


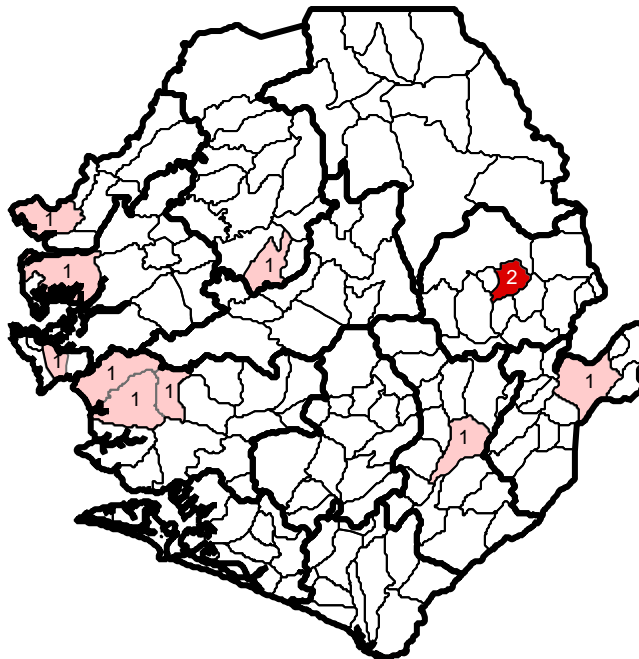
# Building Construction Activities

## NRS Monitoring System, September 2003

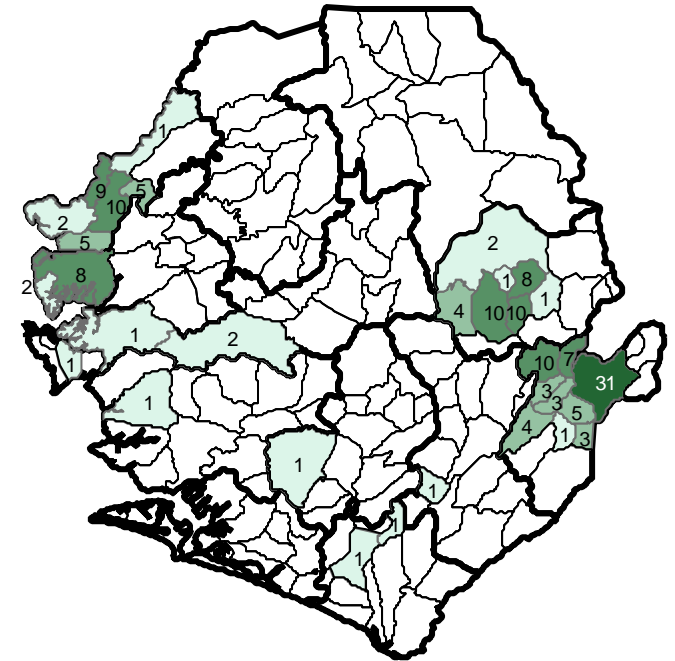
### Who What Where Component



Government Building Reconstruction



Distribution of Shelter Materials



Dwelling Construction

The data presented here is extracted from the Who What Where (WWW) Database of humanitarian activities. The analysis is based on project data reported to OCHA / SLIS by agencies operating in Sierra Leone. All donors present in Sierra Leone, UN Agencies and a cross section of International NGOs as well as NaCSA reported their portfolio. More than 2,800 projects were reported.

One activity is defined as a reported village or chiefdom intervention. The analysis primarily takes into account interventions implemented between August 2002 and August 2003. Analysis of infrastructure projects have included all historical data, some dating to 1999. The following agencies reported Shelter activities: CRS, DFID/CRP, EU / SLRRP, GTZ, ICRC, IOM, NaCSA, NRC, OFDA, UNAMSIL, UNDP, WR

The WWW database is one component of the National Recovery Strategy Monitoring System, which aims to monitor progress against the benchmarks of the NRS. The main the component is the data collected by the District Recovery Committees.

This map was created by the Sierra Leone Information System, an OCHA project established with funding from OFDA, ECHO and UNHCR.

