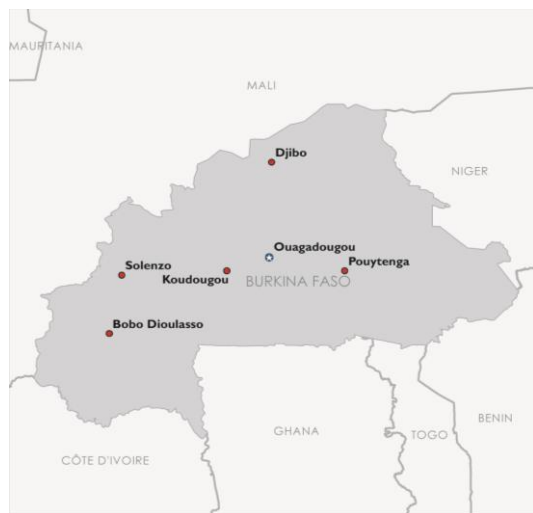
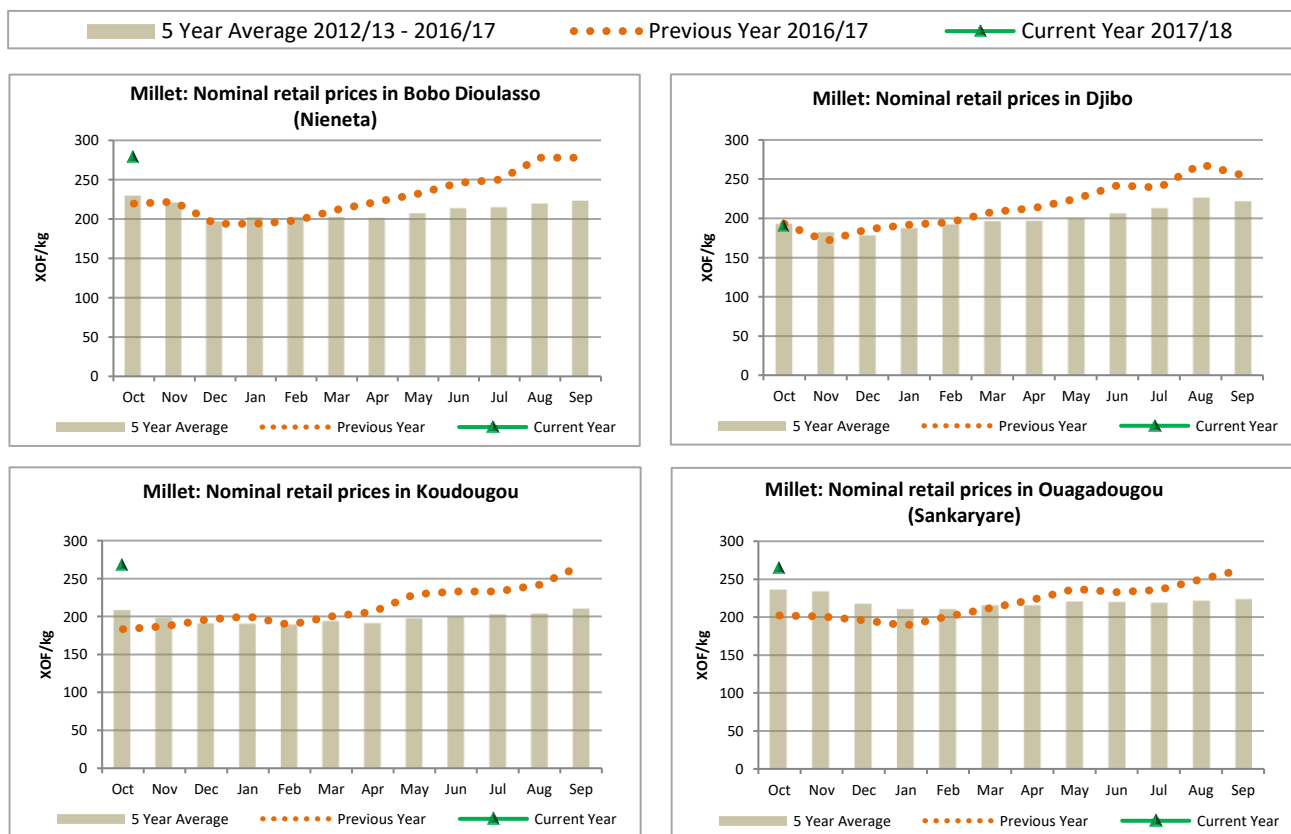


The Famine Early Warning Systems Network (FEWS NET) monitors trends in staple food prices in countries vulnerable to food insecurity. For each FEWS NET country and region, the Price Bulletin provides a set of charts showing monthly prices in the current marketing year in selected urban centers and allowing users to compare current trends with both five-year average prices, indicative of seasonal trends, and prices in the previous year.

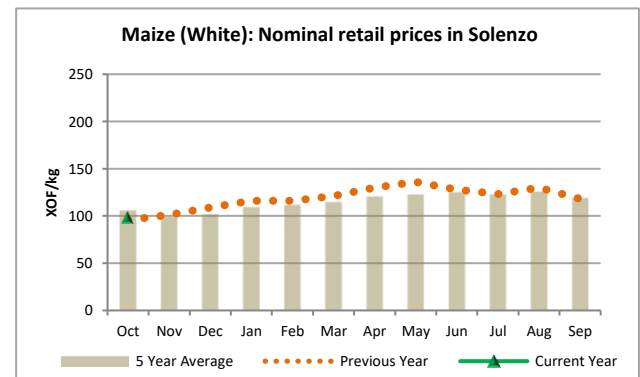
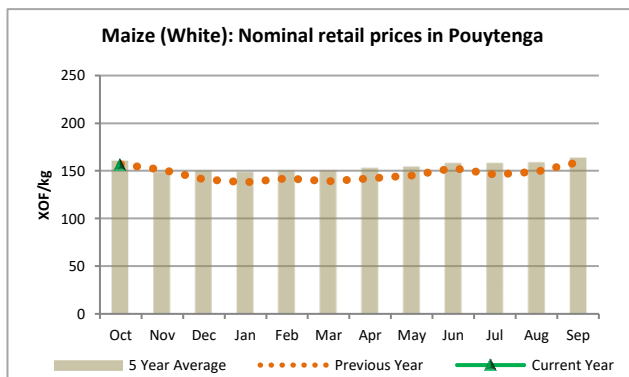
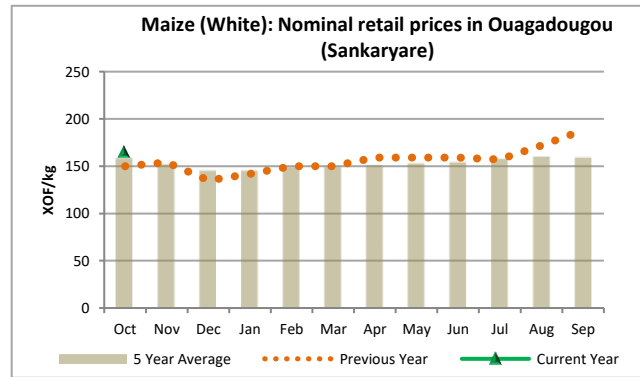
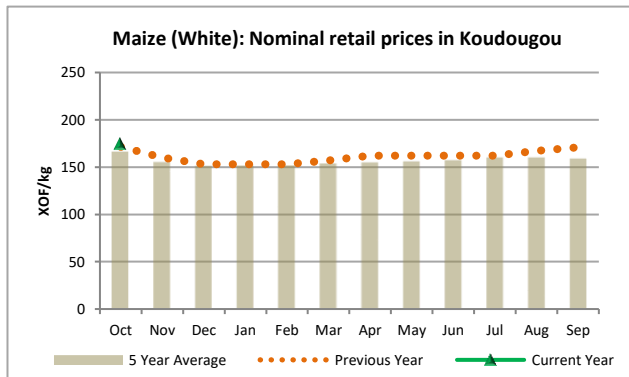
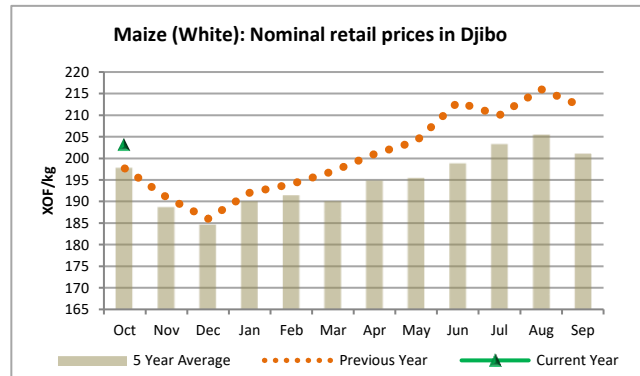
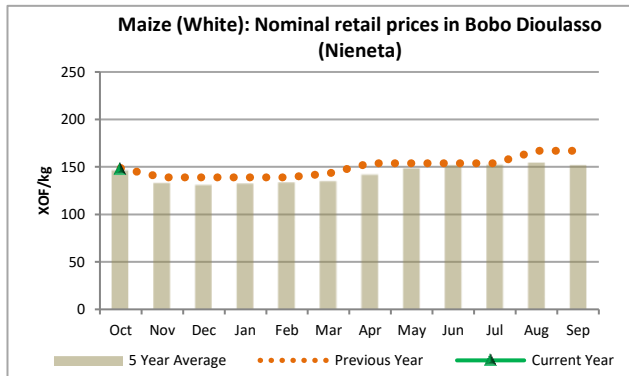
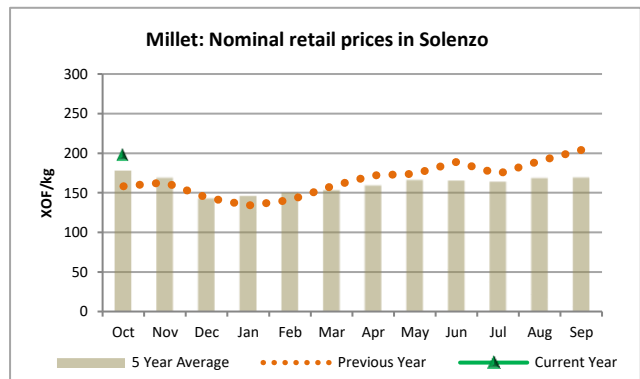
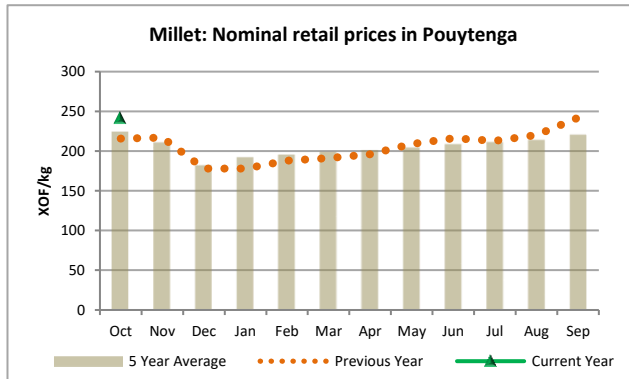


Millet, maize, and sorghum are the most important food commodities for household consumption. Millet is the staple of the most vulnerable households, while maize and sorghum also contribute to the food basket of a majority of all households. Sankaryare market is the largest and most important market in Ouagadougou and supplies other markets within the country and region. Koudougou is located in one of the most populated areas in the country, where a majority of households depend on the market for their food needs. Djibo is in the highly vulnerable Sahelian zone. Pouytenga is an assembly market for products from Nigeria, Ghana, Benin, and Togo. Solenzo is a rural market located in the middle of a surplus production zone. Bobo Dioulasso is important center for both consumption and production – it functions as both the economic capital of Burkina Faso and is located in an important cereal production zone.

FEWS NET gratefully acknowledges the local government agencies, market information systems, UN agencies, NGOs, and private sector partners.



5 Year Average 2012/13 - 2016/17      Previous Year 2016/17      Current Year 2017/18



5 Year Average 2012/13 - 2016/17      Previous Year 2016/17      Current Year 2017/18

