



# Lebanon: Beirut Port Explosions

## Situation Report No. 12

As of 23 September 2020

This report is produced by OCHA Lebanon in collaboration with humanitarian partners.

### HIGHLIGHTS

- 47,500 individuals, out of 152,200 targeted and in need, reached by protection partners since the beginning of the response.
- 92,000 hot/ready-to-eat meals distributed; 44,000 households assisted with food parcels since the beginning of the response.
- 2,295 households reached with multi-purpose cash assistance over the past month.
- Provision of medicines and medical supply continue, alongside provision of water trucking to Geitawi hospital and 200 households.
- Water supply connection re-established for 3,169 households in 674 buildings, reaching 15,786 people.
- Over 2,700 new water tanks and pumps installed, helping to cover 50 per cent of the known WASH needs to date.
- A total of 5,455 hygiene kits and 843 baby kits distributed since the beginning of the response.
- 12 mobile storage units set up at the Beirut Port for enhanced storage capacity.



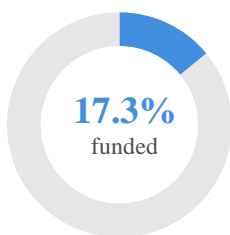
A mobile medical clinic is deployed in one of Beirut's neighbourhoods as the city's health system continues to cope after the Port explosions of 4 August.

*Credit: Amel Association International*



**\$354.9M**

Financial requirements  
(US\$)



**\$61.6M**

Funding received  
(US\$)



**119**

Number of projects

## SITUATION OVERVIEW

The impact of the 4 August explosions in the Port of Beirut continues to exacerbate the grim economic and food security situation in Lebanon. Prior to the explosions, the country had already been going through the worst economic crisis in its history, while having to deal with the effects of a COVID-19 outbreak.

With soaring unemployment rates and salary cuts, many families have been struggling to make ends meet. According to the World Bank, one million people in Lebanon are living below the poverty line. The price of a monthly food basket, a selection of staple food items, has more than doubled over the past six months. A recent World Food Programme survey on the impact of the economic crisis, and the COVID-19 outbreak and subsequent lockdown measures had on livelihoods and food security, show that food has become a major source of concern, with fifty per cent of Lebanese reporting feeling worried they would not have enough food to eat.

As Lebanon imports nearly 85 per cent of its food, the severe damage to the Port, in addition to devaluation of the Lebanese pound, has pushed food prices even further beyond the reach of many vulnerable people. Analysis generated from the Multi-Sector Needs Assessment shows that food remains the second-top priority need reported by residents affected by the explosions. In Bourj Hammoud and Bachoura foncière, food is the main priority and need, alongside cash and shelter repairs, respectively. In the provision of assistance, food security partners have recently launched multi-purpose cash assistance for those most economically vulnerable households to meet their basic needs. Partners aim at assisting 10,000 families, approximately 50,000 individuals, over the course of the next six months.

### COVID-19 update

The COVID-19 outbreak in country remains a serious concern. As of 23 September, Lebanon's total number of cases surpassed 30,000, having reached 31,778, with 328 deaths and 13,527 recoveries. Over the course of the week, cases have been increasing to reach over 1,000 cases on 20 September; 940 new cases and 13 deaths were registered yesterday on 23 September. Since February, a total of 654 Palestine refugees – 345 (52 per cent) of whom live in camps – have tested positive with COVID-19; 16 have died. Also, 729 Syrian refugees and 13 refugees from other nationalities (non-Palestine refugees) have tested positive for COVID-19, with four deaths. At least 920 healthcare workers have been diagnosed with the respiratory illness since February.



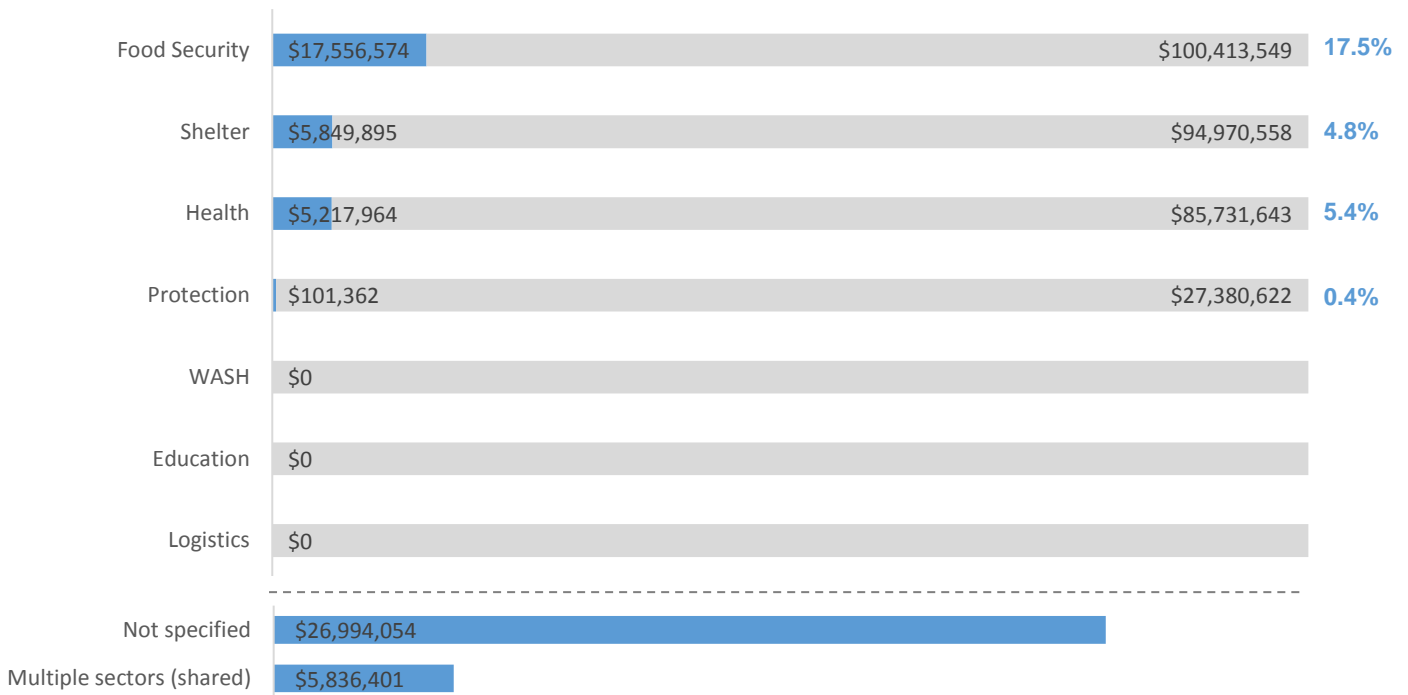
Since 11 September, the number of COVID-19 cases at Lebanon's largest detention center, Roumieh Central Prison, have continued to increase, with a total of 352 cases so far detected among detainees and security guards, according to WHO. The Organization recruited and trained a team of nine nurses to monitor the inmates' medical conditions at an isolation site that was set up last week. The nearest hospital – Dahr El Bacheh Governmental Hospital – is being rehabilitated with the support of the International Committee of the Red Cross and WHO.

*The updated COVID-19 Lebanon Emergency Appeal (LEA) was launched on 17 July, appealing for over \$170.8 million. As of 30 June, the LEA received \$46.6 million (27 per cent) for Priorities 1, 2 and 4. The LEA consists of four Priorities: 1) Supporting Lebanon's health system; 2) Strengthening the engagement of, and communication with, communities; 3) Ensuring uninterrupted delivery of critical assistance and services to the most vulnerable communities affected by the Syria crisis, as covered by the Lebanese Crisis Response Plan 2017-2020 (LCRP); and 4) Supporting the vulnerable populations groups affected by the economic crisis and COVID-19 outbreak.*

## FUNDING

The UN-coordinated response to the Beirut Port explosions, through the Flash Appeal issued on 14 August, is seeking US\$354.9 million to address immediate life-saving needs for three months. Funding towards 119 projects, targeting 300,000 people in need, is being tracked on the [Financial Tracking Service \(FTS\)](#).

### Received funding by sector



## HUMANITARIAN RESPONSE

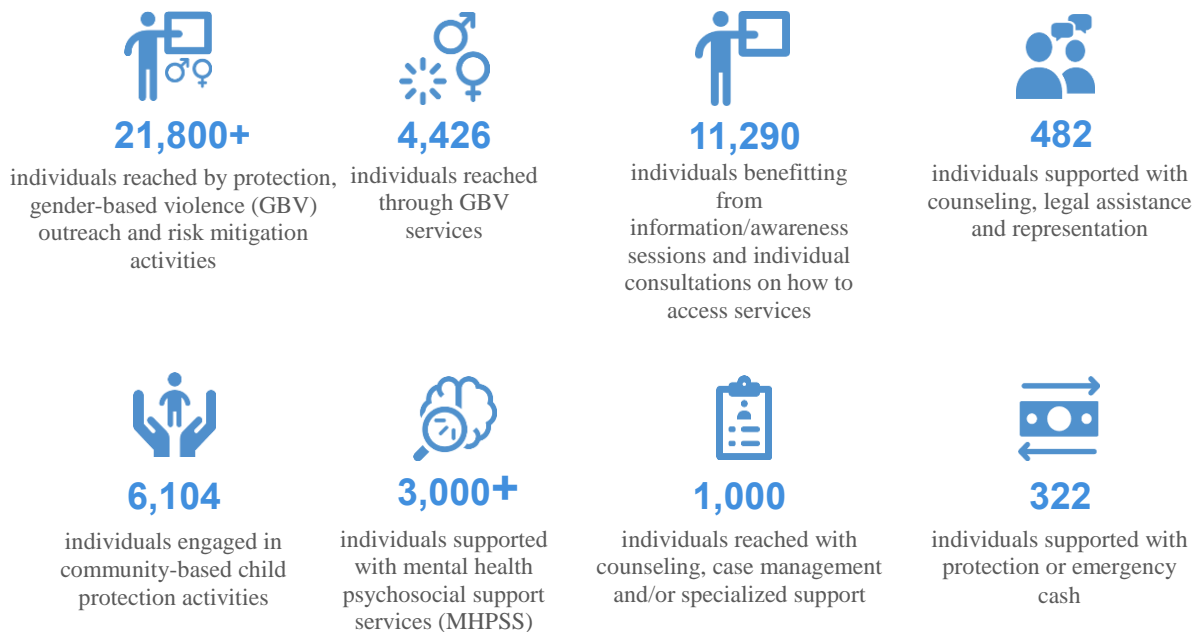
### Protection

#### Needs:

- A high number of affected families continued to report their children are severely traumatized by the explosions, experiencing night terrors and anxiety. Protection partners are referring the reported cases for psychosocial support as needed.
- Partners working on mental health and psychosocial support services have highlighted an increase in the number of people identified in need of assistance.

#### Response:

- Since 8 September, UNICEF and the National Mental Health Programme have been conducting trainings on psychological first aid for child protection actors. Thus far, 63 staff members were trained out of the 295 who registered from 35 different organizations.
- To support improvement in the living conditions of migrant workers, which have worsened since the explosions, the NGO Legal Action Worldwide and IOM assisted 48 Ethiopian migrants who wished to return to their country over the course of the past week.
- Since the beginning of the response, protection partners reached **47,500** out of a total of 152,200.



*N.B. The above figures are not necessarily representative of the entirety of the protection response on the ground.*

## Education

### Response:

- NRC's newly established Geitawi and Sanayeh safe and child-friendly spaces, and social and emotional support centers are fully functional and accepting children ages 4-14. Currently, facilitators are supporting 86 registered children.
- HOOPS continues to support youth and adolescents with Sports for Development sessions in Geitawi and Karem al Arees, with 307 youth and adolescents reached by 45 coaches thus far. Also, War Child Holland provided recreational activities for 1,275 children in Basta, Quarantina and Geitawi.

## Food Security

### Needs:

- Analysis from the Multi-Sector Needs Assessment shows that food remains the second-top priority need reported by residents affected by the explosions. Food is the main priority need in Bourj Hammoud, alongside cash, and in Bachoura foncière, together with shelter repairs.

### Response:



*N.B. The above figures are not necessarily representative of the entirety of the food security response on the ground.*

- Community kitchens also continue to be operational in several areas, providing over 3,000 daily meals.
- Further to the 12,500 metric tons of wheat flour distributed to millers across the country, the weight of the bread bag will increase to 1kg (up from 900gr) for a period of 62 days. The 12,500 WFP shipment was in response to the loss of 15,000 metric tons of grain stocks stored at the Port silos to help stabilize the flour supply in country, as well as the price of bread.
- On 16 September, WFP and partners delivered multi-purpose cash assistance for those affected by the explosions and most economically vulnerable. Those targeted will receive 1,680,000 LBP over the next six months. So far, 2,295 households were reached, with the aim of assisting 10,000 families (approximately 50,000 individuals). WFP encourages and calls on those impacted by the explosions and the country-wide economic crisis to register for assistance at: <https://reg.scope.wfp.org/lb/>. WFP will assess each application against specific vulnerability criteria to ensure that people in need receive adequate assistance, to be provided in the form of food parcels, cash assistance, or a combination of both.
- During the reporting period, nutrition partners provided counselling to 1,162 pregnant and lactating women (PLW) in need of pre-natal, breastfeeding and infant and young child feeding practices. As of 21 September, a total of 5,250 PLW in need were reached.
- WFP has introduced a new system, called Payment Instrument Tracking (PIT), allowing for the digital tracking of distributions. The PIT provides a robust end-to-end assurance mechanism in compliance with risk management and due diligence measures.



## Health

### Needs:

- Acute and chronic medications required for adult patients.
- Needs continue for the most vulnerable segments of the population, with regards to MHPSS, specific medications, and/or physical therapy for those elderly who need it.
- Coverage of hospitalization fees remains a critical need, as many patients are unable to secure admission to hospitals without financial means or guarantees that the fee will later be covered by another actor.

### Response:

#### Primary health care (PHC) services: outreach and facility-based

- Imam Sadr Foundation, Médecins Sans Frontières and HelpAge International, in partnership with Amel Association, conducted home visits to reach the elderly and those with disabilities. Since the start of the response, 799 patients were reached at home and provided with consultations, nursing care, medications, and follow-up as needed.
- MedGlobal Medical, in partnership with NGO Banin, provided mental health consultations, chronic medications, and acute care, in addition to tertiary aid at their tent in Zqaq Al Blat, serving an estimated 1,500 patients since the start of the response.
- Première Urgence-Aide Médicale Internationale (PU-AMI) continued support to two clinics, while the International Orthodox Christian Charities (IOCC) supported with ten midwives in ten PHC centers to ensure the provision of sexual and reproductive health (SRH) care to women and their families. In addition, IOCC, PU-AMI and Relief International (RI) are planning joint support with regards to staffing, subsidization and/or rehabilitation of an additional 12 PHC centers.
- Through home visits, mobile medical units (MMUs) and a PHC center, Amel Association, Makassed Association, Karageusian, University of Balamand, Caritas, IOCC, SIDC, MARSAA have provided consultations, SRH care and medication to over 1,100 patients, including 280 women and girls.

#### MHPSS

- During the reporting period, Iman Sadr Foundation, Caritas, Jesuite Refugee Service (JSR), International Medical Corps (IMC) and UNFPA provided 493 MHPSS interventions – including psychological first aid (PFA), awareness and counseling, and medication – through mixed modalities, such as home visits, mobile units, tents and PHC. Since the start of the response, at least 2,676 MHPSS consultations were provided by these actors, as well as medication for 37 patients. Also, IMC's integrated approach enabled 41 GBV consultations to take place during the reporting period, reaching a total of 262 consultations since the beginning of the response.
- Additionally, Iman Sadr Foundation trained 58 front-line workers on PFA, while the Institute for Development, Research, Advocacy and Applied Care provided guidance and psychological support through a hotline and a free mental health walk-in clinic. RI's psychotherapist and psychiatrist provided specialized mental health services to individuals referred from affected areas.

#### Medicines, supplies and distributions

- Syrian American Medical Society, IMC and MedGlobal distributed personal protective equipment (PPE) in Bourj Hammoud and Gemmayzeh. UNFPA distributed 1,019 dignity kits containing sanitary pads, toothbrushes, toothpaste, towel, soap and facemasks. Since the start of the response, IMC provided PPEs, medical equipment and medications to 19 PHC centers, eight hospitals and two MMUs.

#### Awareness raising

- UNFPA targeted 201 women and girls through outreach sessions, and JRS provided awareness sessions to 308 families on COVID-19 and mental health, social and, behavioral topics, as well as offering referrals to specialized services. Meanwhile, PU-AMI continued to provide key messages on SRH via WhatsApp, and IOCC midwives raised awareness on the same topic.

## Water, Sanitation and Hygiene

### Needs:

- The second round of review and visits continues, with the two-fold purpose of checking on the functionality of previous WASH rehabilitations and revisiting those buildings that had been found inaccessible during the initial WASH assessment.
- A total of 6,500 buildings were assessed since the beginning of the response: 1,495 buildings required some sort of WASH intervention and 533 had connection issues to the main urban water network. Also, 5,354 water tanks and 132 pumps were damaged.

### Response:

- Water supply connection was re-established for 3,169 households in 674 buildings, reaching 15,786 people. Among other activities, the rehabilitation works included the installation of 2,699 new water tanks and 114 new pumps, or plumbing repairs, estimated to cover 50 per cent of the known WASH needs to date.
- WASH partners distributed a total of 5,455 hygiene kits and 843 baby kits since the beginning of the response.
- The WASH hotline campaign continues, with 2,300 posters/flyers distributed in the affected areas. WASH hotlines offer support with regards to water trucking requests, minor plumbing repairs and other WASH hardware support. To date, 107 WASH requests were addressed through the three active hotlines, with 76 requests addressed and closed.
- Provision of WASH services to medical facilities also continues, including to Geitawi Hospital, where 80 water tanks will also be installed by LebRelief and World Vision International once infrastructure rehabilitation works are completed. Also, 200 individuals and one Red Cross Unit were served with approximately 50m<sup>3</sup> of water over the last week.

## Logistics

### Response:

- 12 mobile storage units remain set up at the Beirut Port to temporarily increase storage capacity.

For further information, please contact:

**Séverine Rey**, Head of Office, UN OCHA Lebanon, [rey@un.org](mailto:rey@un.org), Tel: +961 71 802 640

**Enrica Giacobbe**, Humanitarian Affairs Officer, UN OCHA Lebanon, [giacobbe@un.org](mailto:giacobbe@un.org), Tel: +961 71 907 855

For more information, please visit [www.unocha.org](http://www.unocha.org) [www.reliefweb.int](http://www.reliefweb.int)