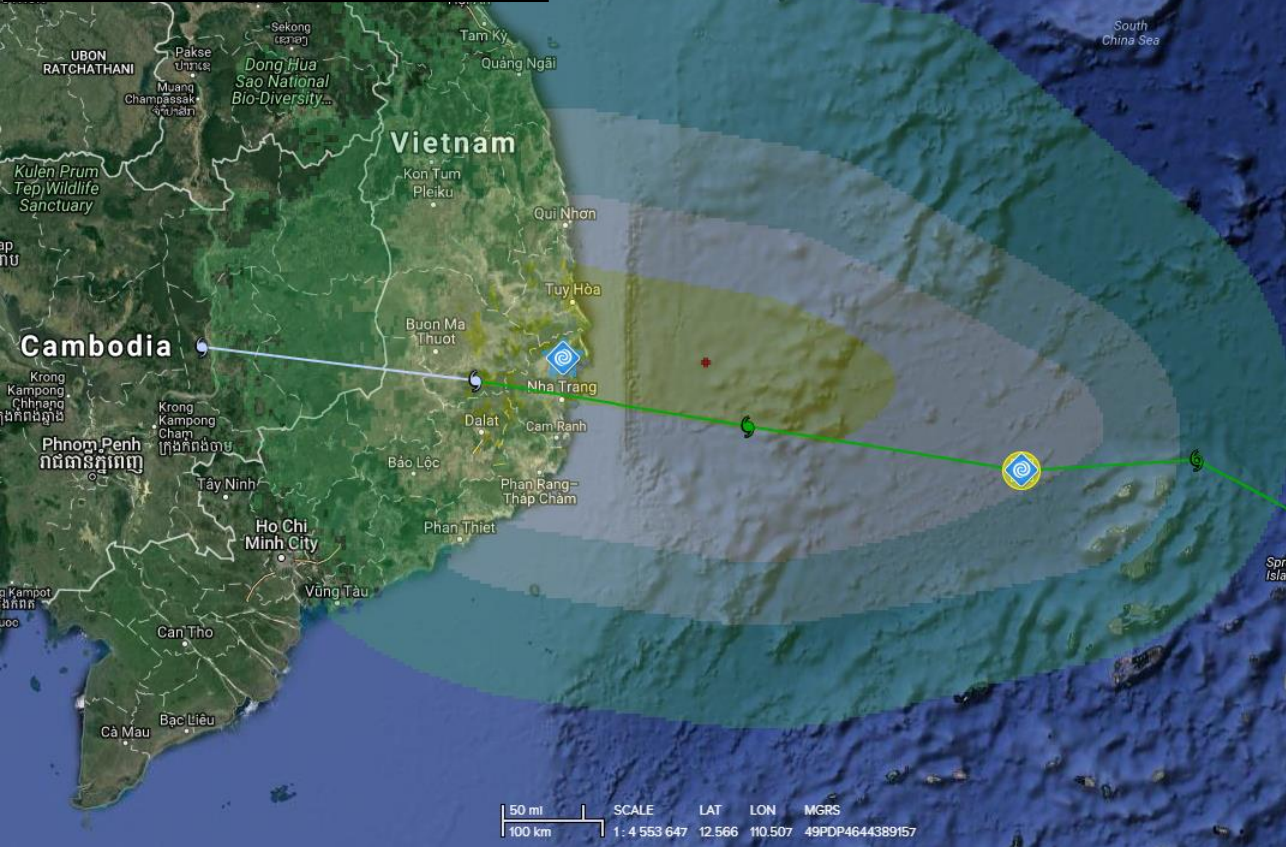


**AHA CENTRE** DMRS v5.3.3  
ASEAN Coordinating Centre for Humanitarian Assistance on disaster management  
Powered by DisasterAWARE



### SUMMARY

The AHA Centre Disaster Monitoring & Response System (DMRS) increased the alert level **"WARNING"** for Tropical Storm Kirogi (TS 31), which will pass through cities of Nha Trang and Cam Ranh again.

## AHA Centre insight for Tropical Storm Kirogi (31)

- Countries at Risk**  
**Vietnam (VN)**, landfall est. 19 Nov 2017  
**Cambodia (KH)**, landfall est. 20 Nov 2017
- Provinces at Risk**
- | Province        | Population           |
|-----------------|----------------------|
| Khanh Hoa (VN)  | 1.174 million people |
| Ninh Thuan (VN) | 569,000 people       |
| Dac Lac (VN)    | 1.771 million people |
| Lam Dong (VN)   | 1.218 million people |
- Key Cities at Risk**
- | Cities         | Province   | Population |
|----------------|------------|------------|
| Nha Trang (VN) | Khanh Hoa  | 283,441    |
| Cam Ranh (VN)  | Ninh Thuan | 146,771    |

**Keywords:** floods, landslides, disruption, storm surge, strong winds, rockfall

- Key Infrastructures at Risk**
- ✓ Nha Trang Int'l Airport / NHA (VN)
  - ✓ Cam Ranh Int'l Airport / CXR (VN)
  - ✓ Van Phong Port (VN)
  - ✓ Nha Trang Port (VN)

- Characteristics of Risk**
- ✓ The affected population is classified as **high risk** (ASEAN Multi Hazard Risk Index).
  - ✓ Tropical Storm Damrey (28) had made landfall on 4 Nov 2017 with most damages sustained in Khanh Hoa, Binh Dinh and Phu Yen.
  - ✓ Storm surges and cold snaps had affected Quang Ngai, Quang Nam and Thua Thien Hue with extensive flooding
  - ✓ Storm surges are expected with sea levels rising between 2-4m and 5-6m in the eye of the storm.

- Preparedness & Response measures underway**
- ✓ Authorities have communicated with fishing vessels to move them inshore after learning lessons from Tropical Storm Damrey.
  - ✓ Flood warning between 19-24 Nov have been issued with likely floods on the rivers from Ha Tinh to Binh Thuan, in the Central Highlands and Dong Nai.
  - ✓ Agricultural, aquaculture and herding activities will continue to be disrupted. Relief efforts are still underway.
  - ✓ Vulnerable population living in dangerous, coastal and lowland areas are being evacuated.
  - ✓ Local authorities have designed specific plans to reinforce house of locals in mountainous and coastal regions with ready plans for evacuation.

