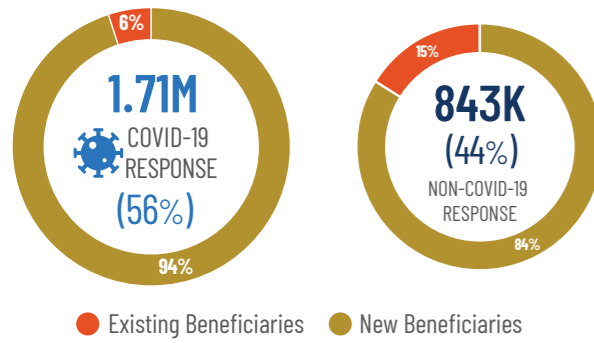


KEY FIGURES*

1.93M SERVICES PROVIDED to BENEFICIARIES



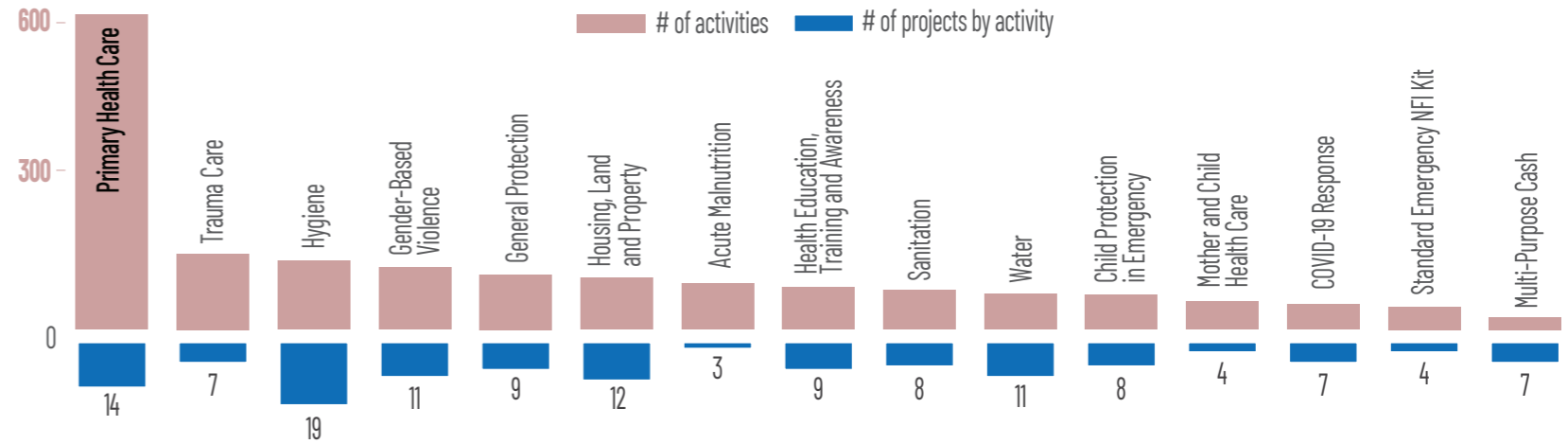
Based on data extracted from ReportHub, the number of services to beneficiaries slightly decreased from **2.18M** in **June 2021** to **1.93M** in **July 2021**. In July, a total of **89 projects** were active, **40** of which catered to COVID-19 response. The **Protection Cluster** has the most active projects (**35**), the **WASH Cluster** has provided the most services to beneficiaries (**1.03M**), and the **Health Cluster** reported the highest number of activities (**957**). **Primary health care** interventions cover most of the activities (**607**) addressing mostly the host communities, internally displaced persons (IDPs), and Afghan refugee returnees.

This dashboard provides a snapshot of 5W data in Afghanistan as reported to ReportHub by implementing partners during the period. By analyzing and visualizing information related to projects, activities (including COVID-19-related activities), and services to beneficiaries, the dashboard aims to assist humanitarian actors in Afghanistan by helping them to identify patterns, trends, and gaps in their responses. This information can be used by partners to inform their decisions related to either re-aligning, re-programing, or planning their projects and activities.

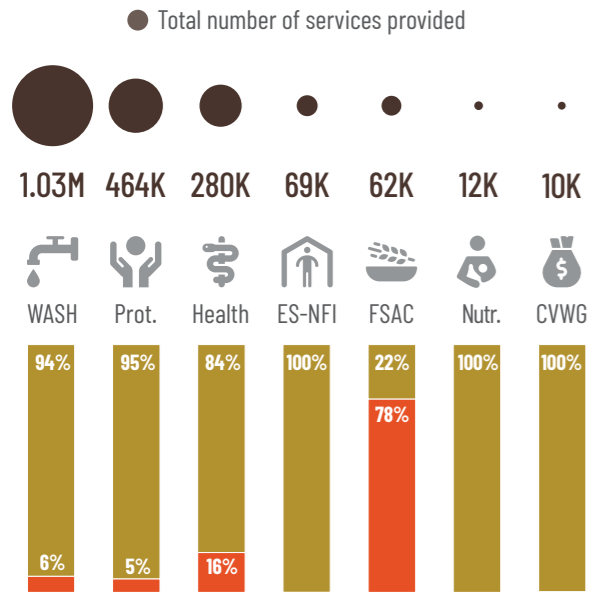
BENEFICIARY TYPE WITH >29K SERVICES (by SEX and AGE)



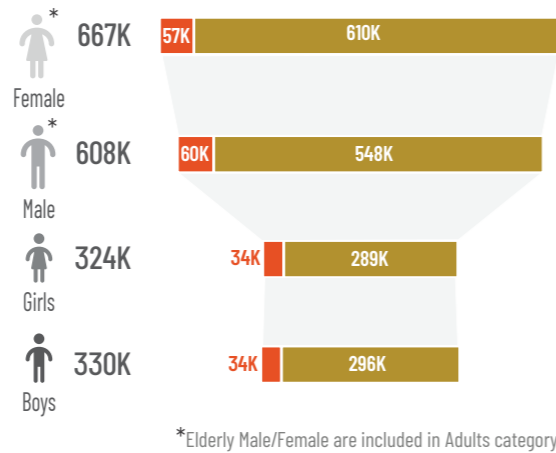
ACTIVITY TYPE (WITH >20 NUMBER of ACTIVITIES) and CORRESPONDING NUMBER of PROJECTS



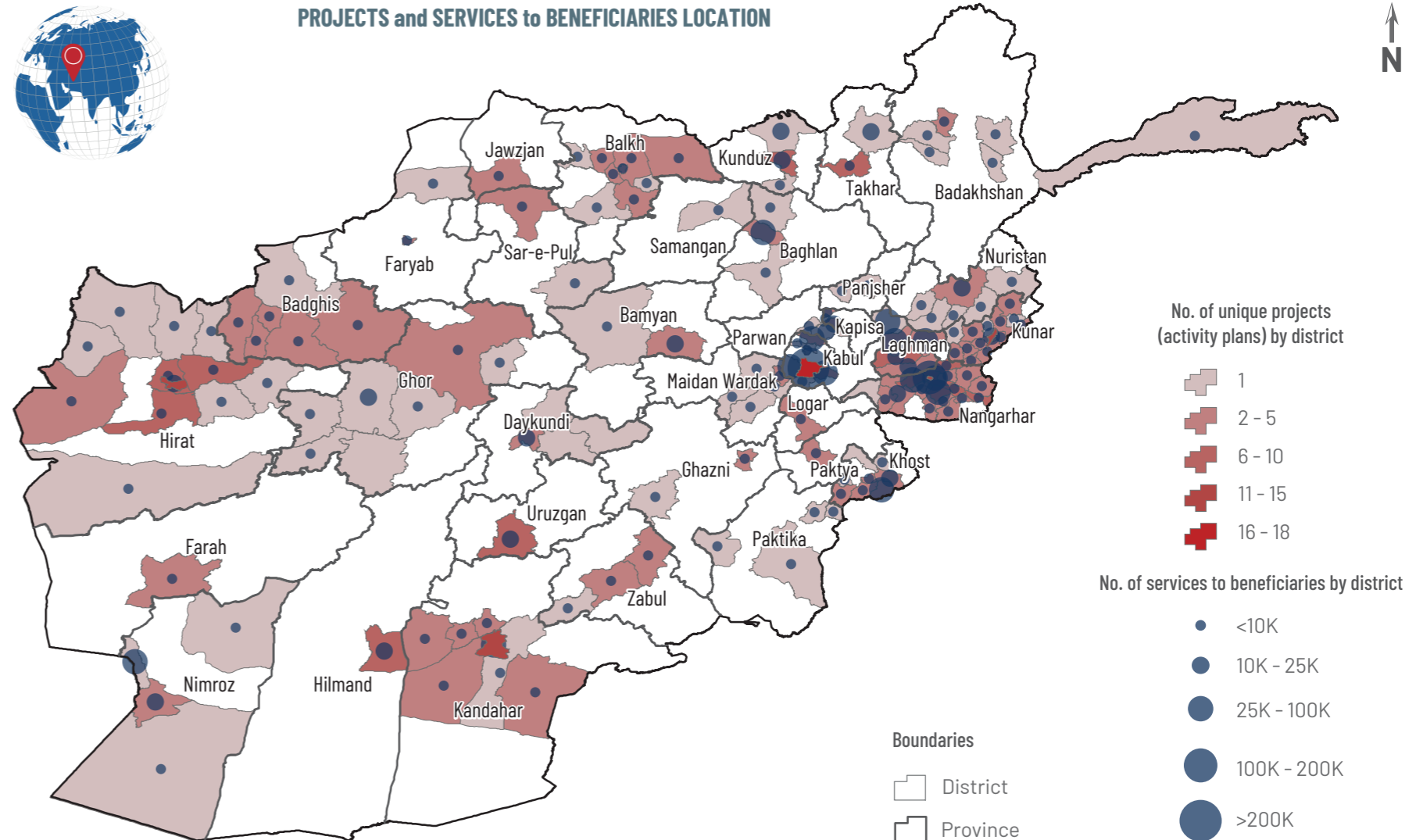
SERVICES by CLUSTER/WG and DELIVERY TYPE



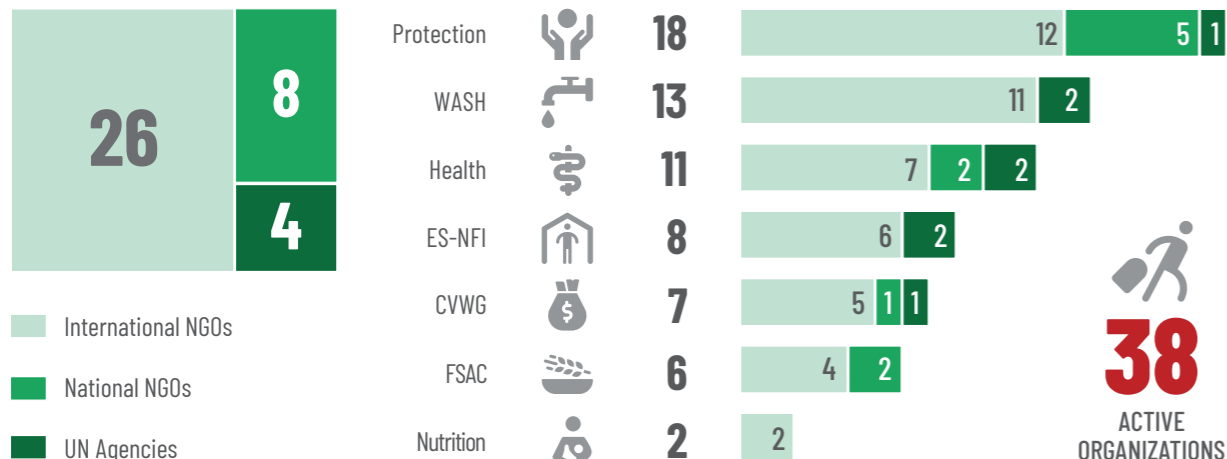
SERVICES by DELIVERY TYPE (SEX/AGE)



PROJECTS and SERVICES to BENEFICIARIES LOCATION



NUMBER and TYPE of ORGANIZATIONS by CLUSTER/WORKING GROUP



The boundaries, denominations, and designations displayed in this product are defined by the data shared with iMMAP. At iMMAP we visualize data, we do not create it, so these elements and freshness of the data are the responsibility of the data providers and no endorsement nor acceptance of it by iMMAP or USAID can be assumed. This dashboard is made possible by the generous support of the American people through USAID.

*Please note that some figures were rounded-off and may not calculate to the exact total. Data extracted and creation date: August 18, 2021 Data sources: Partners actively reporting in ReportHub (<https://reporthub.org/>), Afghan Geodesy and Cartography Head Office (AGCHO) Feedback: rep-afghanistan@immap.org.