

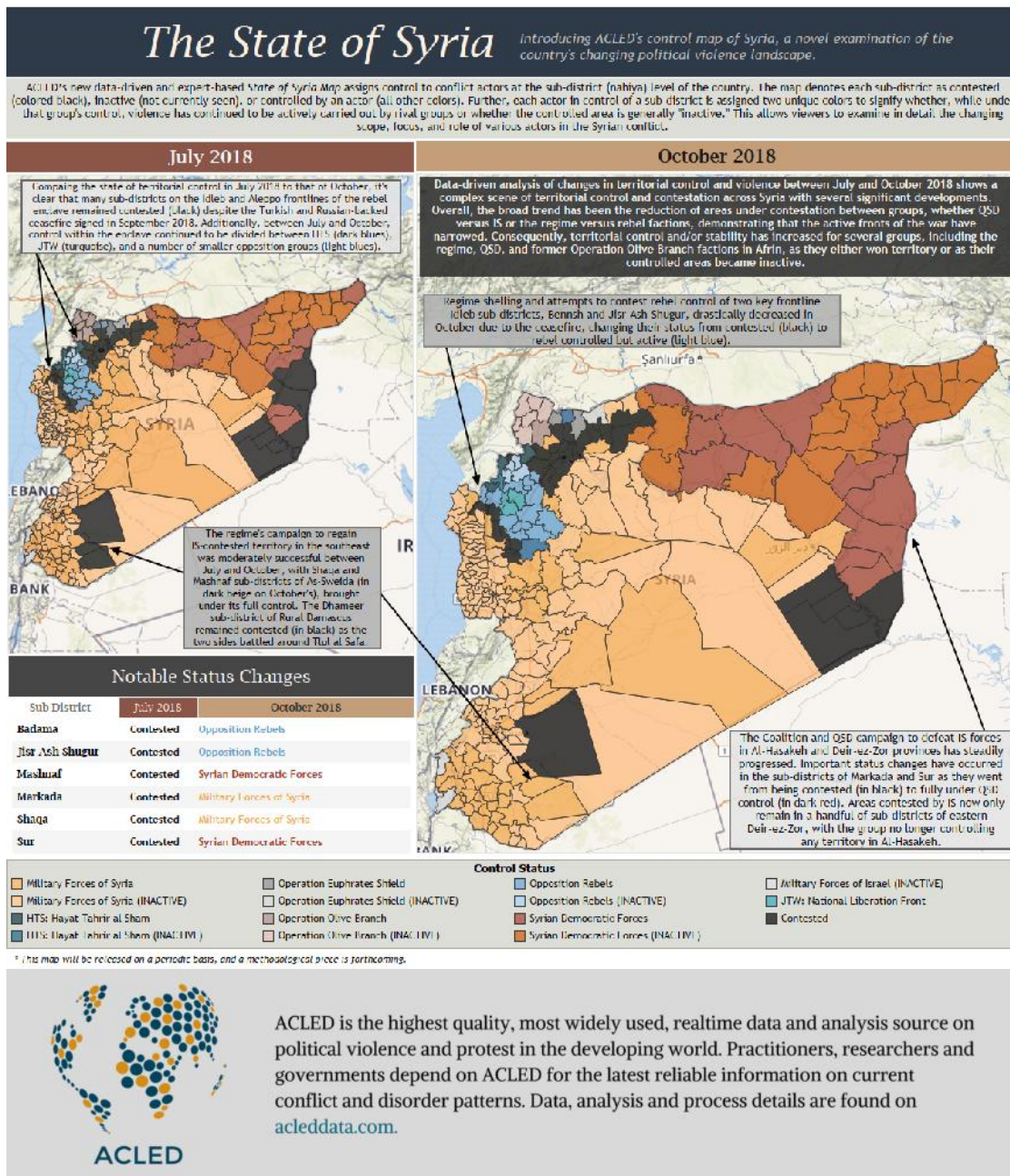
16/11/2018

Kars de Bruijne

## The State of Syria



Introducing ACLED's control map of Syria, a novel examination of the country's changing political violence landscape, developed by Senior Syria Researcher Dr. Kars de Bruijne, Assistant Syria Research Manager Stephanie Anderson, Syria Research Manager Muaz A. and Researcher Nick Grinstead, with contributions from the Syria Research Team. Updated versions of the map will be released periodically.



## The State of Syria



Kars de Bruijne is a Senior Researcher at ACLED. He manages the Syria project and its nine researchers and conducts research on the quality of the data. Mr. de Bruijne holds a PhD (University of Groningen) in the field of Civil War carrying out fieldwork with leading commanders and vanguards of the Revolutionary United Front in Sierra Leone. He also works as a research fellow at the Clingendael Institute (the Hague) and previously worked as a researcher for the OECD, DFID/Welcome Trust,

CESS and as a lecturer at the University of Groningen. He is based in the Hague, Netherlands.



Stephanie Anderson is the Assistant Syria Research Manager with ACLED. She holds an M.A. in Development Studies with a concentration on conflict, peace, and development issues and a geographic specialization in the Middle East and North Africa. Her research interests include non-state governance and civilian agency during violent conflict, with prior research focusing on the role of civilian governance actors in rebel-held areas of Syria.



Nick Grinstead is a researcher focusing on the political economy of conflict-affected and fragile countries in the Levant. He applies his years of regional experience to his analytical rigor with an eye toward identifying under-looked trends in conflicts. Nick is also developing an understanding of conflicts in sub-Saharan Africa, where he is currently based.

Tagged on: [Syria](#)

---

Viewed using [Just Read](#)