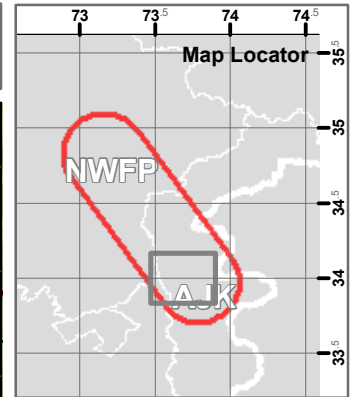
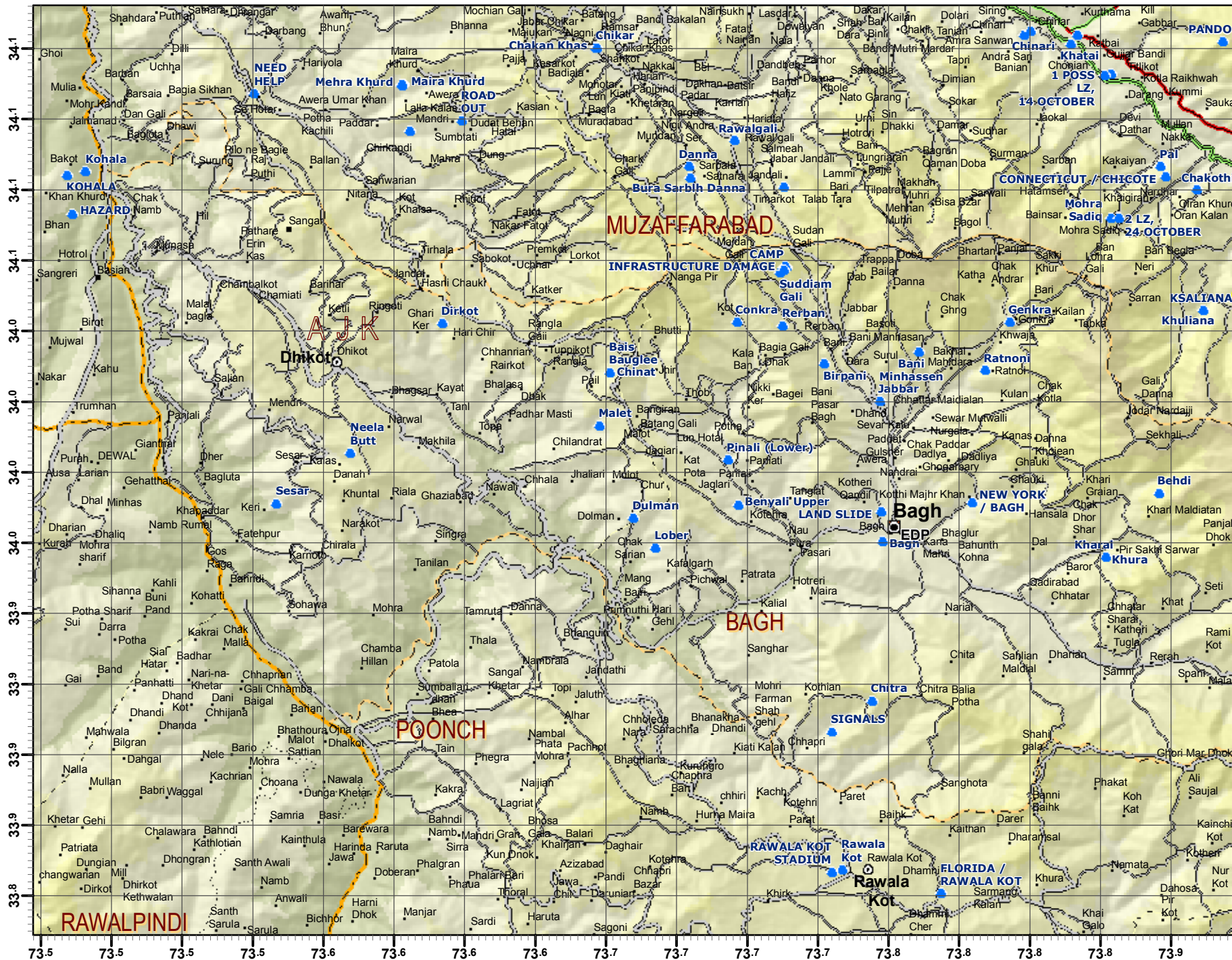


Bagh District, West

Produced by Brody Dittmore
United Nations Joint Logistics Centre, Pakistan, VVAF
3, Street 2, F-8/3, Islamabad
UNJLCMaps@googlemail.com



- District capital
- Tehsil capital
- Union Council capital
- Significant location
- Settlement
- ⊙ Helipad
- UNJLC Hubs
- EDP
- FASS
- Urban area
- Road Status
- Event
- Open
- Impassable
- Roads
- Primary
- Secondary
- Tertiary
- Unknown
- Line of Control
- Province
- District
- Tehsil
- Union Council
- Elevation (metres)
- Below 500
- 500 - 1,000
- 1,000 - 1,500
- 1,500 - 2,000
- 2,000 - 2,500
- 2,500 - 3,000
- 3,000 - 3,500
- 3,500 - 4,000
- 4,000 - 4,500
- 4,500 - 5,000
- 5,000 - 5,500
- 5,500 - 6,000
- 6,000 - 6,500
- 6,500 - 7,000
- Over 7,000

Label Styles

PROVINCE LABEL
DISTRICT LABEL
TEHSIL LABEL

1:200,000

Version 1.0

The boundaries and names on this map (or maps) do not imply official endorsement by the World Food Programme or by the United Nations. Facts and figures in this map are to the best of our knowledge accurate and up to date at the time of writing but subject to change at any time. The World Food Programme makes no warranty or representations as to the reliability or accuracy of the data contained herein. For planning purposes only.

About the UNJLC: The United Nations Joint Logistics Centre (UNJLC) is an inter-agency facility reporting to the Humanitarian Co-ordinator within complex Humanitarian crises, and overall to the Inter-Agency Standing Committee. Its mandate is to coordinate and optimise the logistics capabilities of humanitarian organisations in large-scale emergencies. UNJLC operates under the custodianship of the WFP who are responsible for the administrative and financial management of the Centre. UNJLC is funded from voluntary contributions channelled through WFP.

Copyright: United Nations World Food Programme 2005. All rights reserved.

Produced through the generous support of: