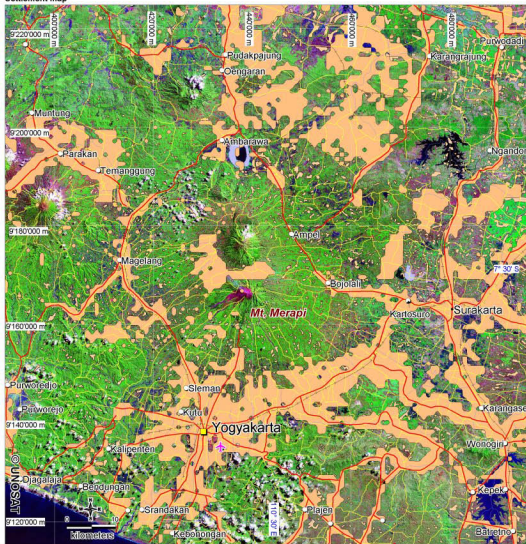
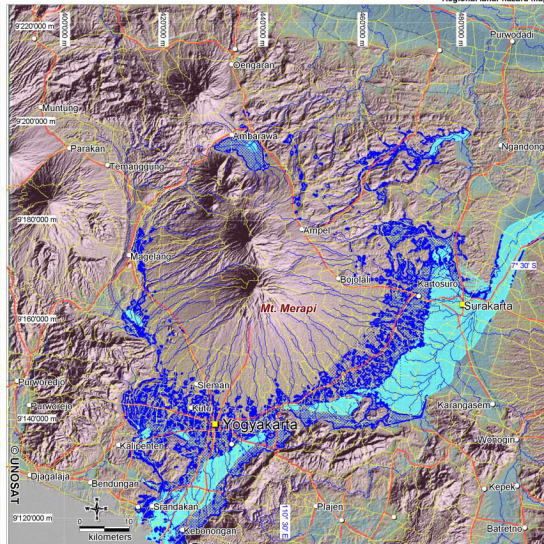


Indonesia - Mount Merapi - Areas at risk from future lahars

Settlement map



Regional lahar hazard map



Map legend

- main road
- secondary road
- railway
- populated places
- main city
- river
- ✈ airport

Hazard map (right)

- lahar flow channel
- lahar deposition zone (likely flooded area)
- erosion zone (slope)

The deposition zone represents those areas likely to accumulate ash and volcanic debris remobilized downslope as lahars after heavy rainfalls. This zone was estimated using the MRVBF model developed by Guffert and Dowling (2002). The region will be lahar-prone for several years considering the eruption size.

GLIDE number: VO-2006-000048-IDN

Disaster type: lahar (volcanic debris mud flow)

Satellite data: Landsat, SRTM

Geographic data: Global Insight, Landscan 2002, MRVBF model, Indonesian geographic atlas (1998/9)

Data source: USGS, NASA, Europa Technologies, Department Pekerjaan Umum

Datum: UTM 49 South

Projection: WGS 84

Map scale: 1: 550 000 for A3 printout

Map created: 9 June 2006, version v3

Contact information: info@unosat.org

247 hotline: +41 76 487 4998

This map was produced by the United Nations Institute for Training and Research (UNITAR) Operational Satellite Applications Programme (UNOSAT). UNOSAT provides satellite imagery and related geographic information to UN humanitarian and development agencies and their implementing partners.

The depiction and use of boundaries, geographic names and related data shown here are not warranted to be error free nor do they necessarily imply official endorsement or acceptance by the United Nations.

UNOSAT 
satellite imagery for all
www.unosat.org