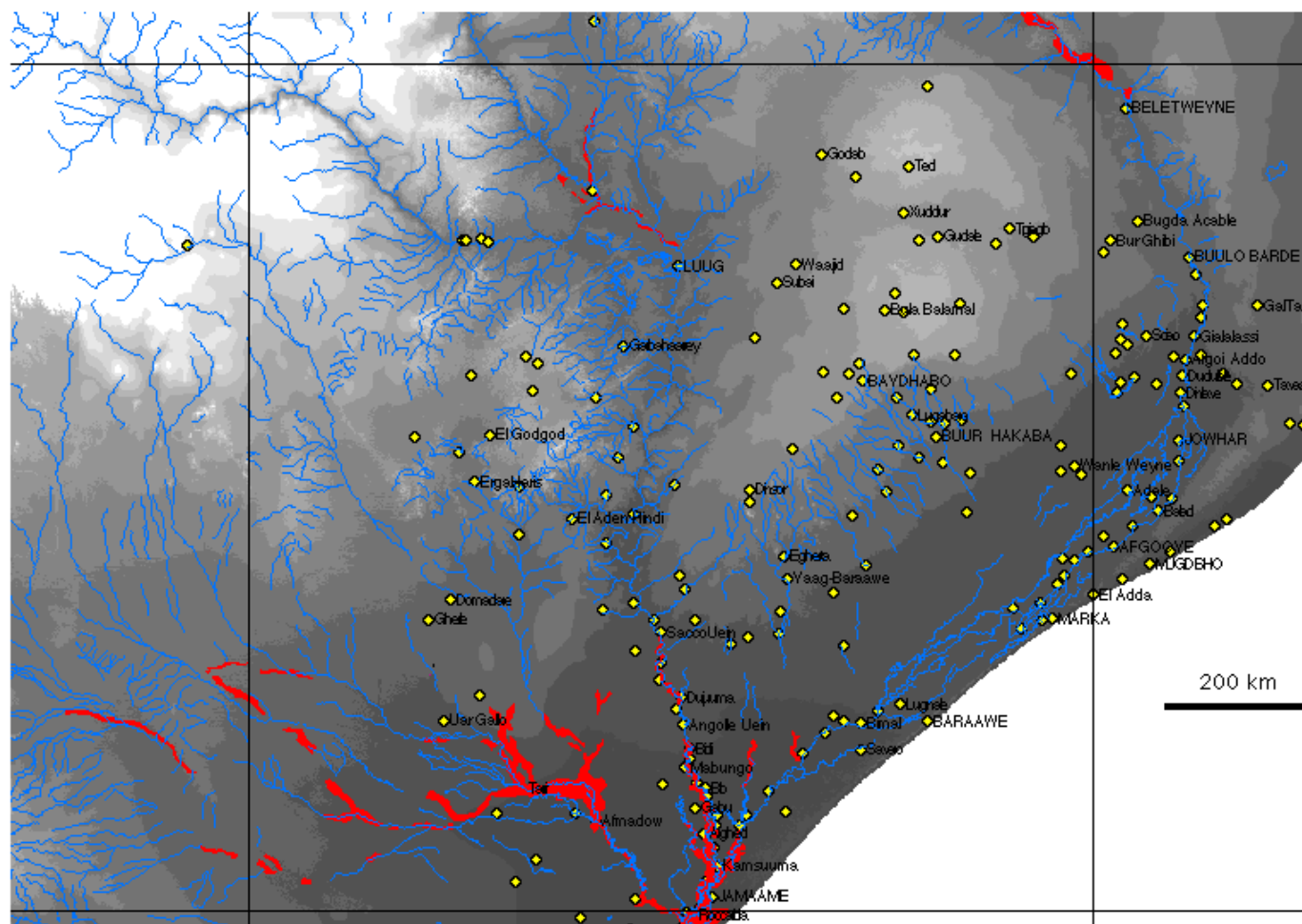


DFO97-90 Somalia Flooding of November-December, 1997



Red shows inundated land in late November, 1997, as observed by NOAA AVHRR sensor with a ground spatial resolution of approximately 1 km. Number 1 of a series of three different thematic maps for this time period and based on the same remote sensing data. Because of cloud cover, areas flooded are not comprehensive. Also remaining are registration errors: accuracy of red area boundaries is uncertain. This map provides a synoptic view showing the approximate location of severe flooding. Map coordinates are latitude and longitude and graticule is at 5 degree intervals.

Produced by G. R. Brakenridge at the Dartmouth Flood Observatory, Dept. of Geography, Dartmouth College, Hanover NH 03755 USA. Map may be freely reproduced, please cite the source. Research supported by NASA MTPE.