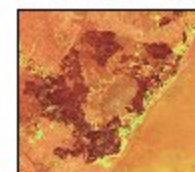


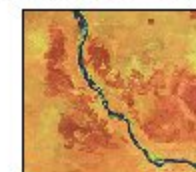
Caprivi region Namibia floods

Overview map, no-flood situation

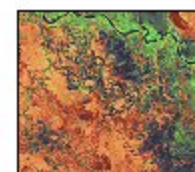
Satellite image interpretation key



Mountains



River



River delta,
plain



Sparsely vegetated
plain

Disaster type: Flood
Charter launch date: 31 March 2004
Data source: Landsat ETM+ (USGS, U. Maryland)
Resolution: 15 m
Image acquisition date: 4 December 2002
Datum: WGS84
Projection: UTM35
Map created 31 March 2004.

The International Charter on Space and Major Disasters aims at providing a unified system of space data acquisition and delivery to those affected by natural or man-made disasters through authorized users. Since 1 July 2003 the Charter is available to support the United Nations with satellite imagery. Contact the UN Office for Outer Space Affairs for further information (ooosa@unvienna.org).

The depiction and use of boundaries, geographic names and related data shown here are not warranted to be error free nor do they necessarily imply official endorsement or acceptance by the United Nations.

This map was produced by the UNOSAT project headed by UNITAR and executed by UNOPS. UNOSAT is a UN-Private consortium providing satellite imagery and related geographic information to UN humanitarian and development agencies and their implementing partners. See www.unosat.org for further information.



UNOSAT 
 satellite imagery for all
www.unosat.org