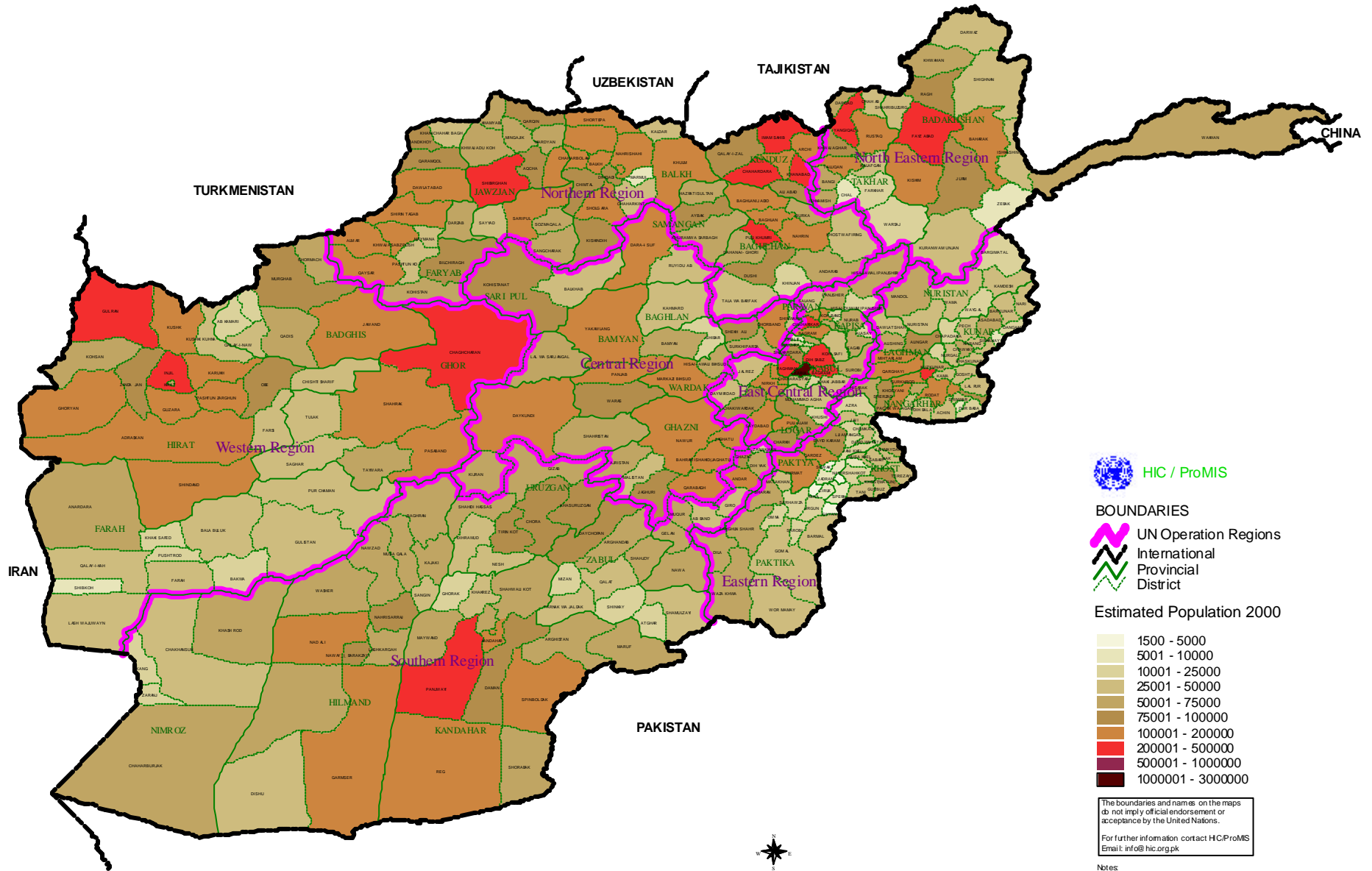


Estimated Population 2000 Satellite



- BOUNDARIES**
- UN Operation Regions
 - International
 - Provincial
 - District

Estimated Population 2000

Lightest tan	1500 - 5000
Light tan	5001 - 10000
Medium tan	10001 - 25000
Dark tan	25001 - 50000
Brownish tan	50001 - 75000
Dark brown	75001 - 100000
Reddish brown	100001 - 200000
Red	200001 - 500000
Dark red	500001 - 1000000
Black	1000001 - 3000000

The boundaries and names on the maps do not imply official endorsement or acceptance by the United Nations.
 For further information contact HIC/ProMIS
 Email: info@hic.org.pk

Notes:
 Population data from the Oak Ridge National Laboratory Landsat 2000 Dataset
 Source: http://www.ornl.gov/gis/projects/landsat/landsat_doc.html
 Projection = Geographic (Lat/Lon)
 Map Production - ProMIS

