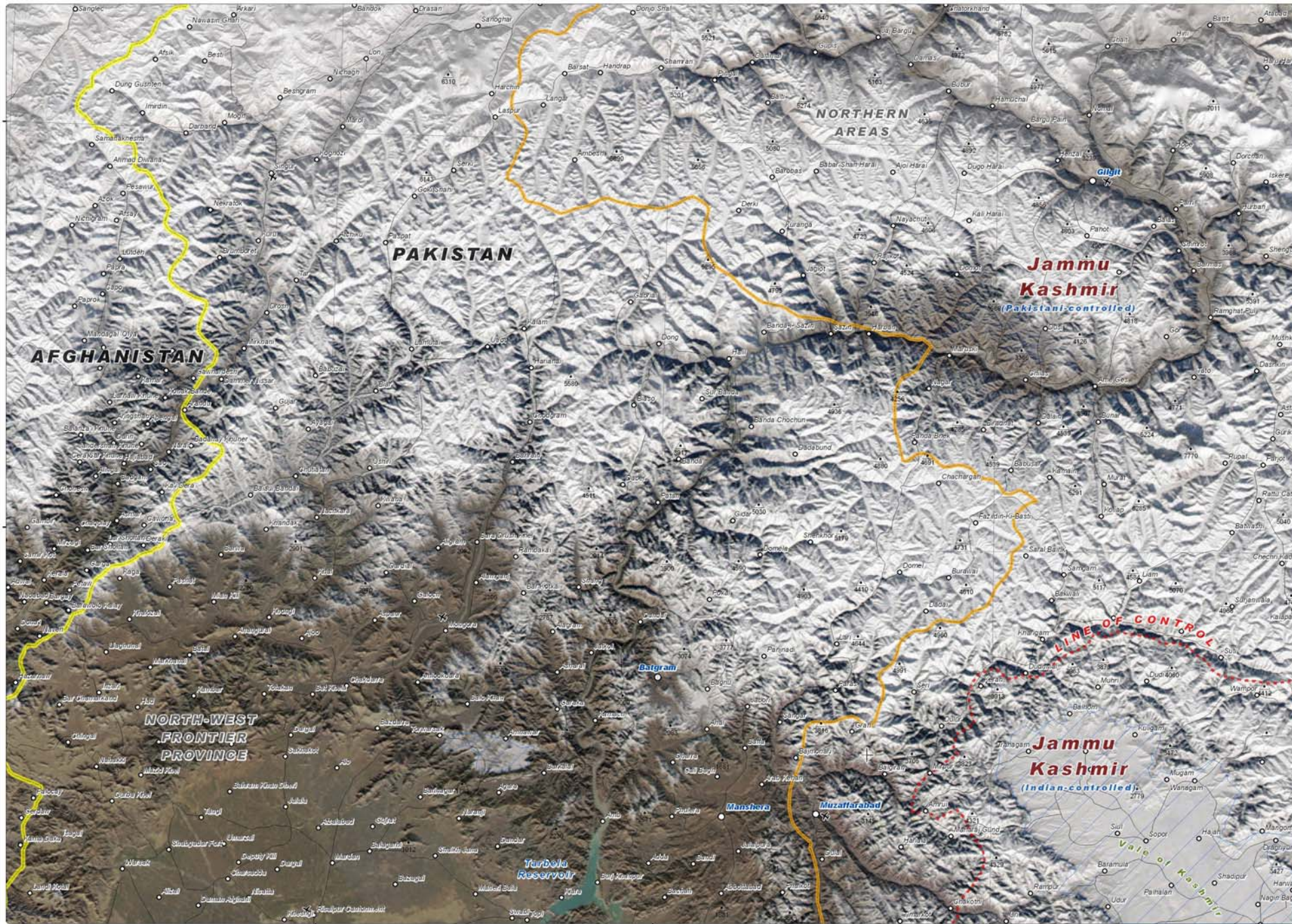


Snow Cover Over Northern Pakistan and India

South Asian Earthquake 2005

7 January 2006

1:700,000



This map illustrates the extent of snow cover over the region of Pakistan and India most affected by the October 2005 earthquake. The surface reflectance image was recorded by the Aqua satellite (MODIS sensor) at approximately 250m² spatial resolution on 7 January 2006.

The red dotted line represents approximately the Line of Control in Jammu and Kashmir agreed upon by India and Pakistan. The final status of Jammu and Kashmir has not yet been agreed upon by the parties. The depiction and use of boundaries, geographic names and related data shown here are not warranted to be error-free nor do they imply official endorsement or acceptance by the United Nations.

This map was produced for the UNOSAT project headed by UNTAR and executed by UNOSAT. UNOSAT is a UN-private consortium providing satellite imagery and related geographic information to UN humanitarian and development agencies, and their implementing partners. Please visit www.unosat.org for more information.

Map Legend

- Earthquake Epicenter
- Village
- Spot Height (m)
- Airport
- Road
- International Border
- Province Border
- Line of Control
- Cloud Cover
- Snow Cover
- Bare Ground
- Water

Projection: UTM Zone 43N
 Datum: WGS 1984
 Image Data: MUY09 2006007 (L3)
 Elevation: SRTM (height in meters)
 Spatial resolution: 250m²
 Data Sources: NASA, Vintop, CGIAR-CSI
 Scale (for A2): 1:700,000
 Map created: 8 January 2006
 Globe Number: EQ-2005-000174-PAK

Contact Information:
info@unosat.org
 24/7 Hotline: +41 76 487 4998

