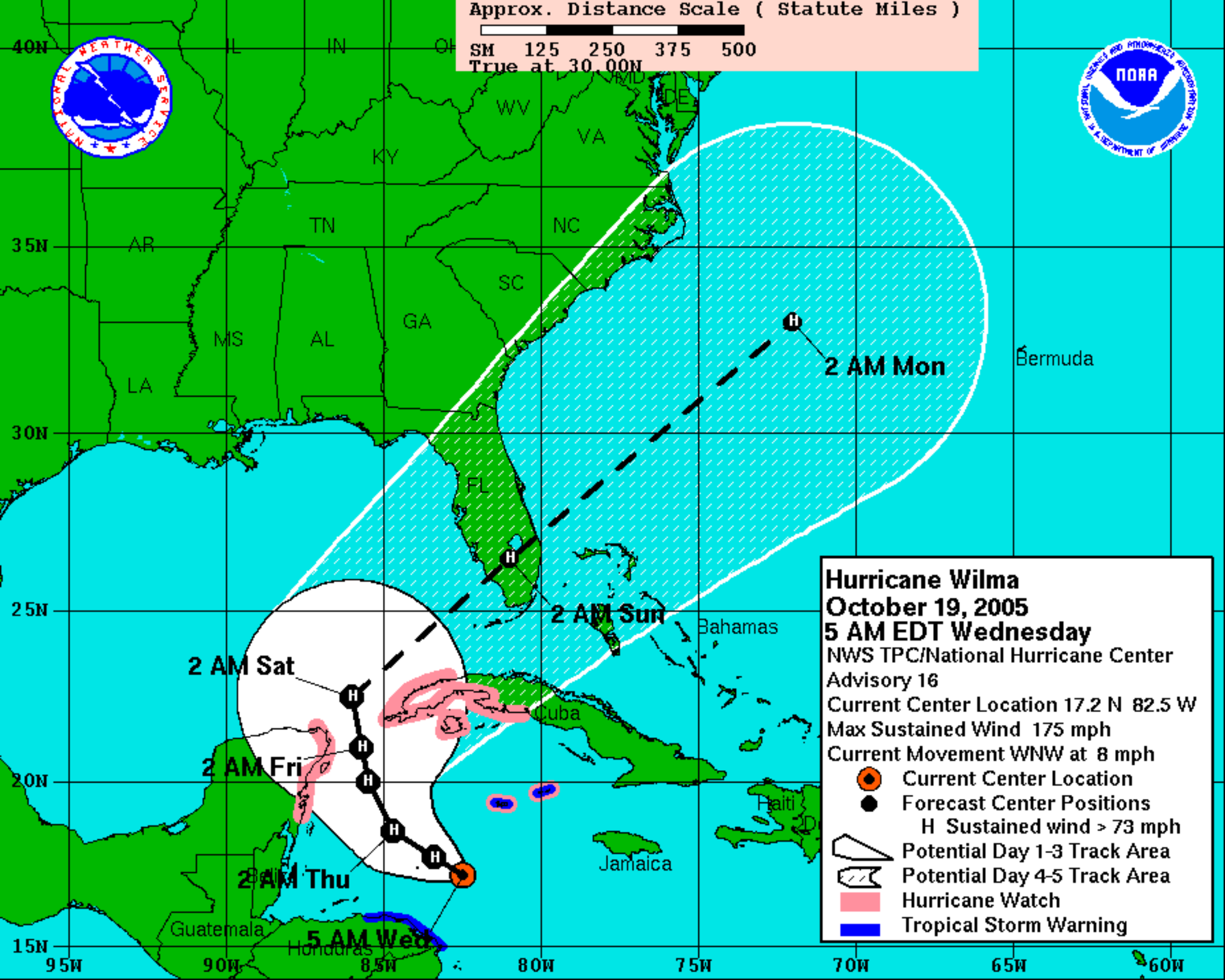
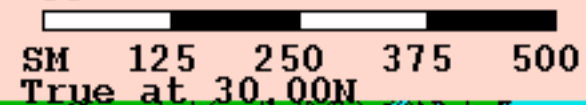


Approx. Distance Scale (Statute Miles)



Hurricane Wilma
October 19, 2005
5 AM EDT Wednesday
 NWS TPC/National Hurricane Center
 Advisory 16
 Current Center Location 17.2 N 82.5 W
 Max Sustained Wind 175 mph
 Current Movement WNW at 8 mph

- Current Center Location
- Forecast Center Positions
- H** Sustained wind > 73 mph
- Potential Day 1-3 Track Area
- Potential Day 4-5 Track Area
- Hurricane Watch
- Tropical Storm Warning

2 AM Sat

2 AM Fri

2 AM Thu

5 AM Wed

2 AM Sun

2 AM Mon

Bermuda

Bahamas

Cuba

Jamaica

Haiti

Guatemala

Honduras