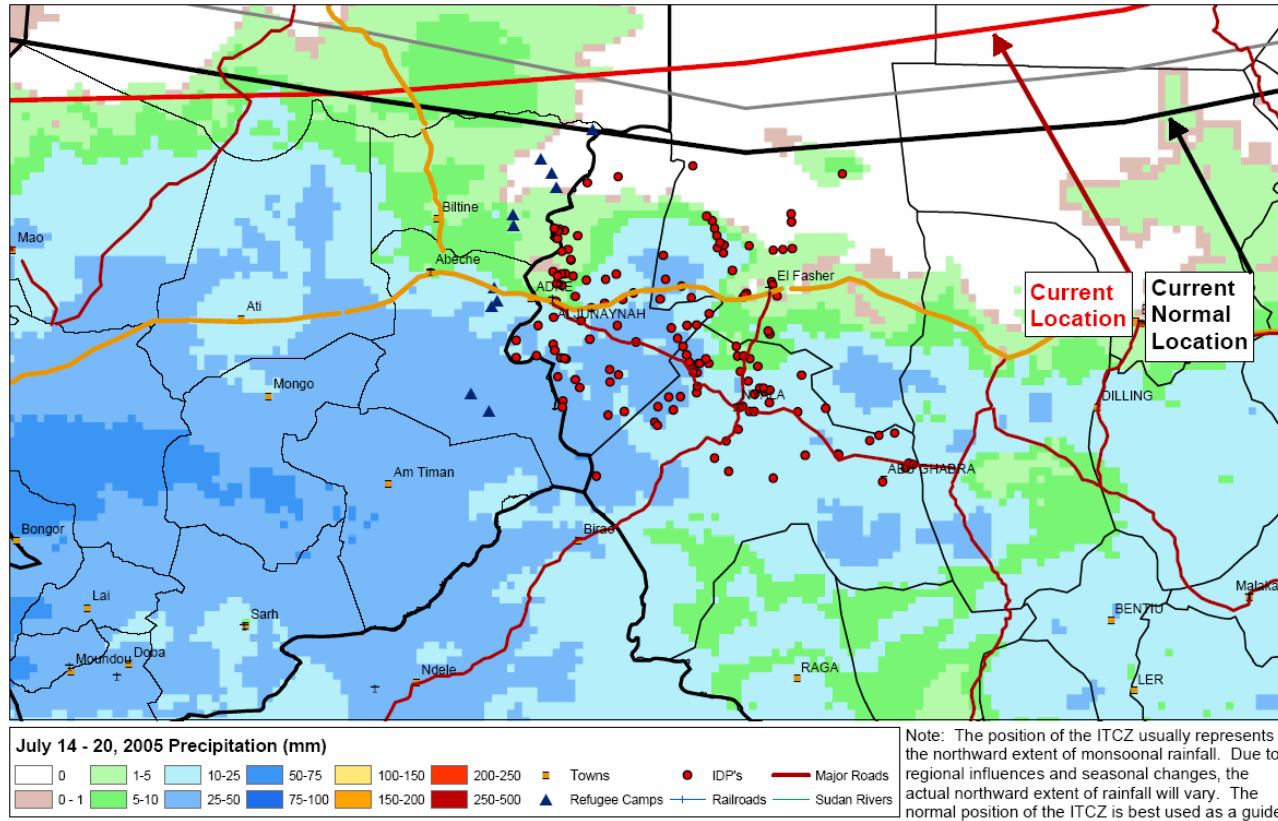


# Darfur Crisis: Rain Timeline

21 July 2005

Time remaining before seasonal rains cut off sites in Darfur and Eastern Chad



As the ITCZ nears its northernmost extent of the season, seasonal rains have set in over most of Darfur and Eastern Chad, hampering access to IDPs and refugees. Heavy rains are expected this week in Ouaddai (Chad) and parts of Darfur. While large towns in Darfur are accessible, surrounding areas face access difficulties. By now, certain areas in West and South Darfur have already been cut off. Fuel deliveries have been restricted, contributing to fuel shortages in Sudan.