

SOUTH SUDAN CRISIS

Key planning figures, needs and funding indicators for the humanitarian response

PLANNING FIGURES FOR DEC '14



SITUATION OVERVIEW

The South Sudan crisis has deteriorated significantly. Targeted **ethnic killings** have taken on a new dimension in attacks in Bor and Bentiu, fuelling revenge. Food security experts are warning that **famine** is looming. **Displacement** could affect 1.5 million people by year end and up to 863,000 may have left the country. Epidemics are now a major risk, following a **cholera outbreak** in Juba. In total, the crisis puts more than seven million people at risk. To help, we must **scale up** now.

KEY GOALS

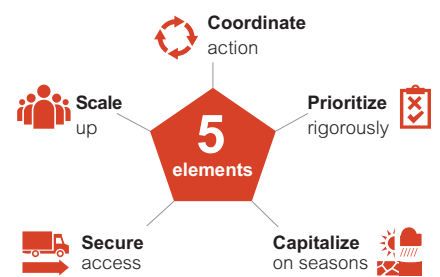
In the current crisis situation, **3 immediate goals** are key:

- 1 Save lives,**
- 2 Prevent famine, and**
- 3 Avert losing another generation.**

WHAT IF WE FAIL?

If we are not able to deliver aid, every second severely food insecure person will not get help against **hunger and starvation**. Up to 50,000 children could die from **malnutrition**. **Cholera** may not be contained. Tens of thousands could die from **other killers**, including measles, pneumonia, malaria and failed child births. Hundreds of thousands would not be able to rebuild their **shattered lives**.

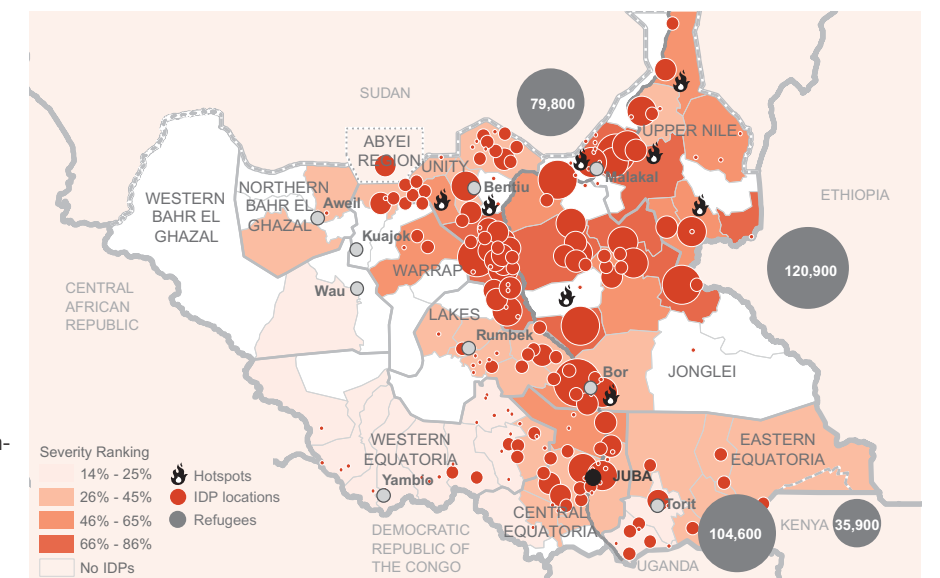
RESPONSE STRATEGY



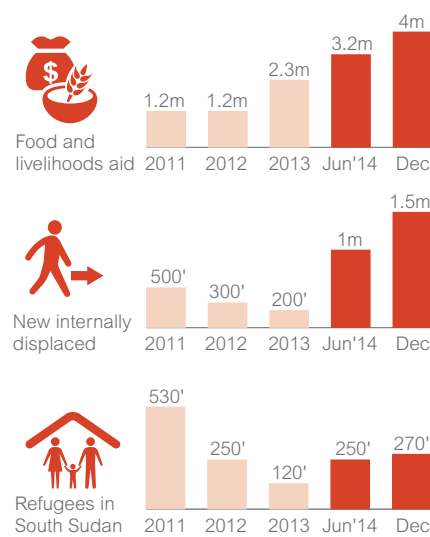
RESULTS HIGHLIGHTS JAN-JUNE 2014

- Food/livelihoods:** 75% of 1.6m targeted people reached.
- Health:** 80% of communicable diseases responded to within 48h.
- Nutrition:** 63% of the acutely malnourished children under 5 yrs treated.
- WASH:** 81% of emergency-affected people provided with safe water.
- Logistics:** 54% of the targeted 25,000 passengers served by humanitarian air operations.
- Multicenter:** 100% of 238,000 refugees assisted.

CONFLICT, NEEDS SEVERITY AND DISPLACED PEOPLE



LONG-TERM PLANNING TRENDS



REQUIREMENTS TO DEC 2014

Clusters	Need	Gap	Progress
FSL	\$866m	\$664m	77%
MS refugee response	\$248m	\$193m	77%
WASH	\$127m	\$80m	63%
Nutrition	\$131m	\$54m	41%
Protection	\$67m	\$52m	81%
Health	\$77m	\$49m	64%
Logistics	\$79m	\$40m	51%
ES and NFI	\$67m	\$45m	68%
CCCM	\$63m	\$40m	62%
Education	\$27m	\$18m	67%
Mine action	\$17m	\$5m	30%
CCS	\$19m	\$14m	67%
ETC	\$5m	\$3m	61%
Total	\$1.8bn	\$1.26bn	70%

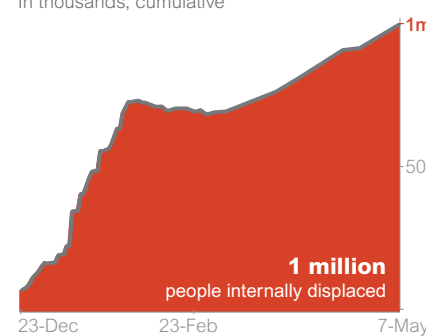
PEOPLE TARGETED AND REACHED

Clusters	Target	Reached
Food assistance	1.6m people	75%
Refugee response	250,000 Sudanese	94%
Safe water	1.69m people	80%
Nutrition	821,000 children	12%
Protection	1.7m people	81%
Health	0.29m consultations	48%
Logistics	25,000 air PAX	54%
Shelter and NFI	360,000 people	139%
Camp mgmt.	650,000 IDPs	42%
Education	204,000 children	33%

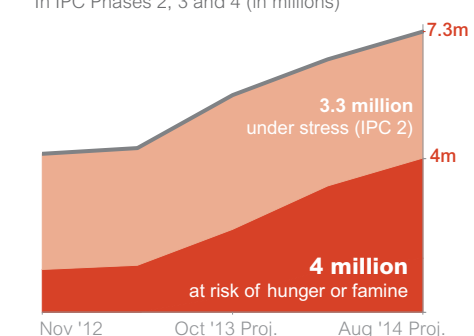
MORE INFORMATION

- tinyurl.com/oslomay2014
- www.unocha.org/south-sudan
- reliefweb.int/country/ssd
- southsudan.humanitarianresponse.info
- tinyurl.com/ftssouthsudan

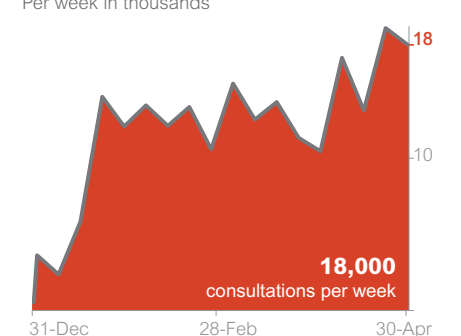
INTERNALLY DISPLACED PEOPLE



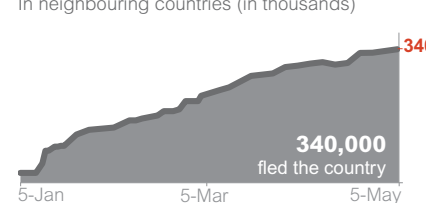
FOOD INSECURE PEOPLE



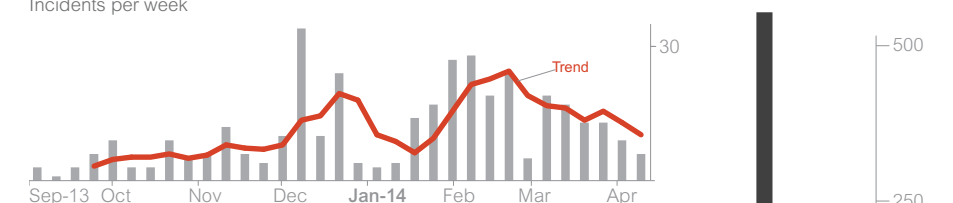
MEDICAL CONSULTATIONS IN IDP SITES



SOUTH SUDANESE REFUGEES



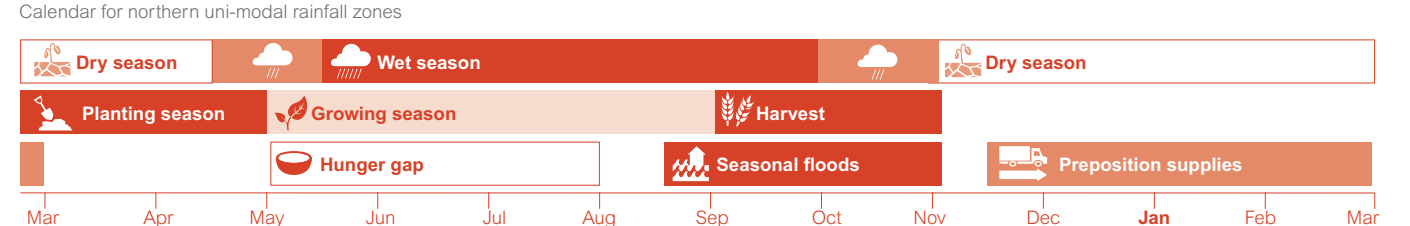
ACCESS CONSTRAINTS



LONG TERM DISPLACEMENT TREND



KEY SEASONAL EVENTS



Sources: (A) Consolidated Appeal 2011, Consolidated Appeal 2012, Crisis Response Plan Feb 2014. (B) fts.unocha.org (14 May), Clusters (14 May). (C) Clusters (14 May).

Sources: (C) Clusters (10 May); (D) OCHA, UNHCR; (E) OCHA; (F) IPC Alert South Sudan May 2014; (G) Health Cluster (May 2014);(H) UNHCR (10 May 2014);(I) OCHA (May 2014);(J) OCHA;