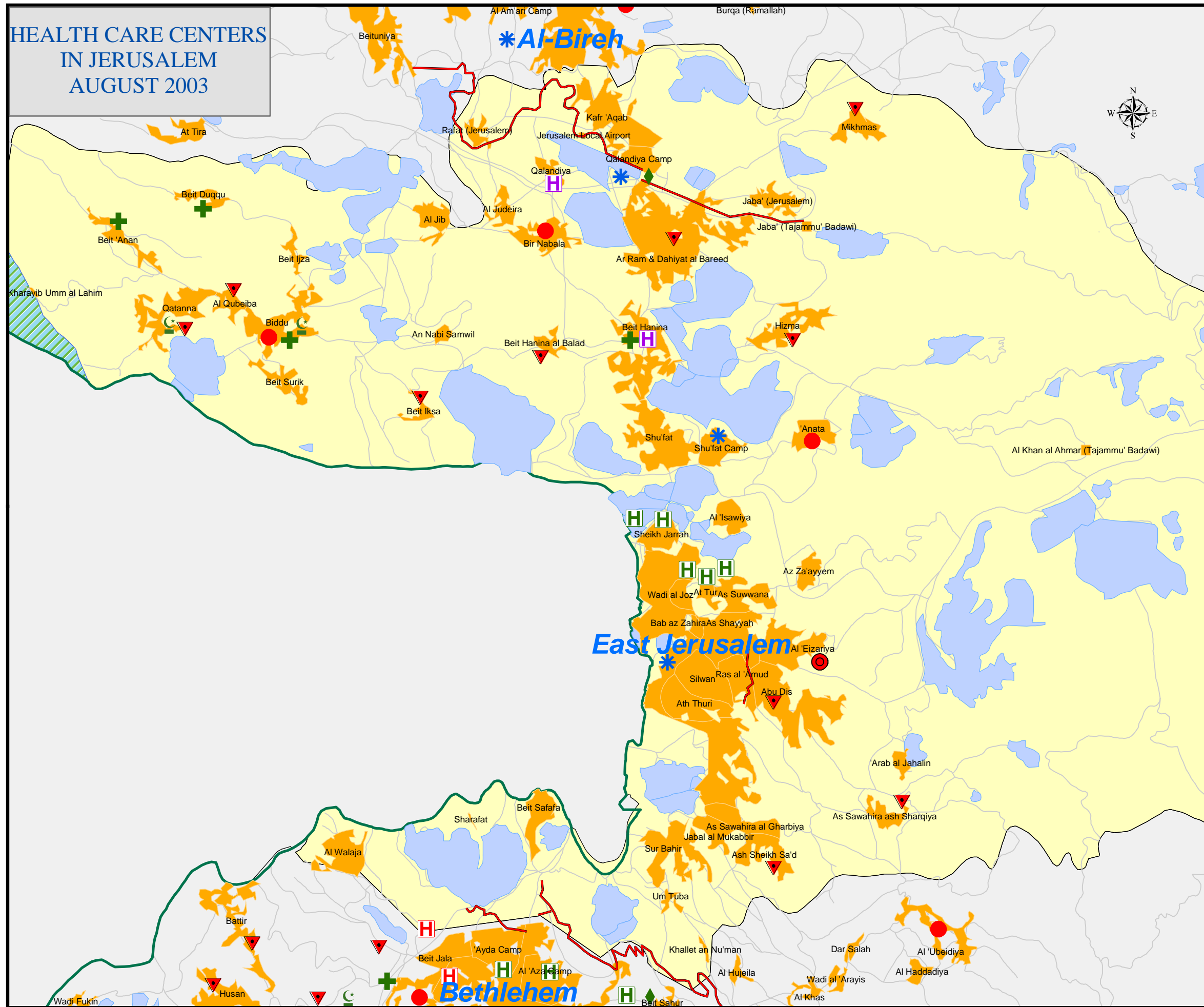


HEALTH CARE CENTERS IN JERUSALEM AUGUST 2003



Legend

- MRC-MoHC PHC 2 (contribution)
- MRC-MoHC PHC 3 (contribution)
- ▲ MOH Level 1
- ▲ MOH Level 2
- MOH Level 3
- MOH Level 4
- + MRC
- * UNRWA
- ☾ PRCS
- ◆ UHWC
- UHCC
- H MOH Hospital
- H NGO Hospital
- H Private Hospital
- H UNRWA Hospital
- Palestinian Built-up Areas
- Israeli Colonies
- Jordan River
- No Mans Land
- Roads
- Governorates Boundries
- Wall being finalized or completed

MOH Level (1) provides:
 * Preventive services: mother and child health care and immunization .
 * Curative services: first aid.

MOH Level (2) provides:
 * Preventive services: mother and child health care, and immunization.
 * Curative services: General Practitioner (GP) medical care.
 * Laboratory (in some clinics)

MOH Level (3) provides:
 * Preventive services: mother and child health care, immunization, family planning and dental.
 * Curative services: GP and medical specialist.
 * Laboratory.
 * Health education

MOH Level (4) provides:
 * Preventive services: mother and child health care, immunization, family planning and dental.
 * Curative services: GP and medical specialist care and dental care.
 * Gynecology and obstetric
 * Laboratory.
 * Radiology.
 * Health education
 * Emergency Medical Services (EMS)

Copyright: August 2003, Health Inforum, Tel:+9722 532 7447, Fax: +9722 532 2904, Email: info@healthinforum.org
 Website: www.healthinforum.org
 Wall Layer Source: OCHA Humanitarian Information Center 22/08/03
 Base Map Source: Good Shepherd Engineering & Computing Co.
 www.gsecc.com

- PHC: Primary Health Care
- SHC: Secondary Health Care
- MOH: Ministry of Health
- MRC: Medical Relief Committees
- PRCS: Palestinian Red Crescent Society
- UHWC: Union of Health Work Committees
- UHCC: Union of Health Care Committees
- UNRWA: UN Relief and Works Agency

