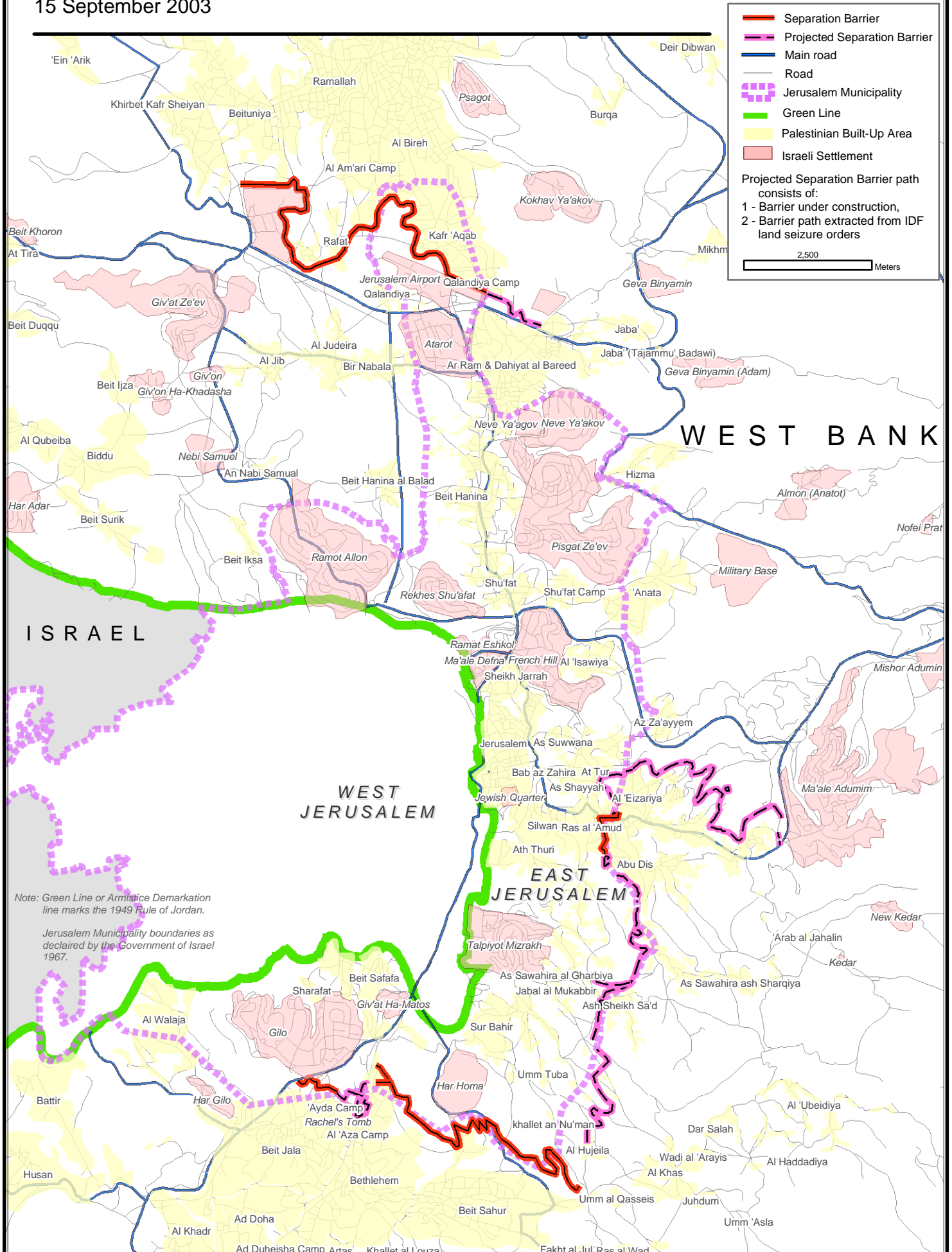


# JERUSALEM ENVELOPE - Separation Barrier

15 September 2003



- Separation Barrier
- - - Projected Separation Barrier
- Main road
- Road
- Jerusalem Municipality
- Green Line
- Palestinian Built-Up Area
- Israeli Settlement

Projected Separation Barrier path consists of:  
 1 - Barrier under construction,  
 2 - Barrier path extracted from IDF land seizure orders

2,500 Meters

Note: Green Line or Armistice Demarcation line marks the 1949 Rule of Jordan.  
 Jerusalem Municipality boundaries as declared by the Government of Israel 1967.