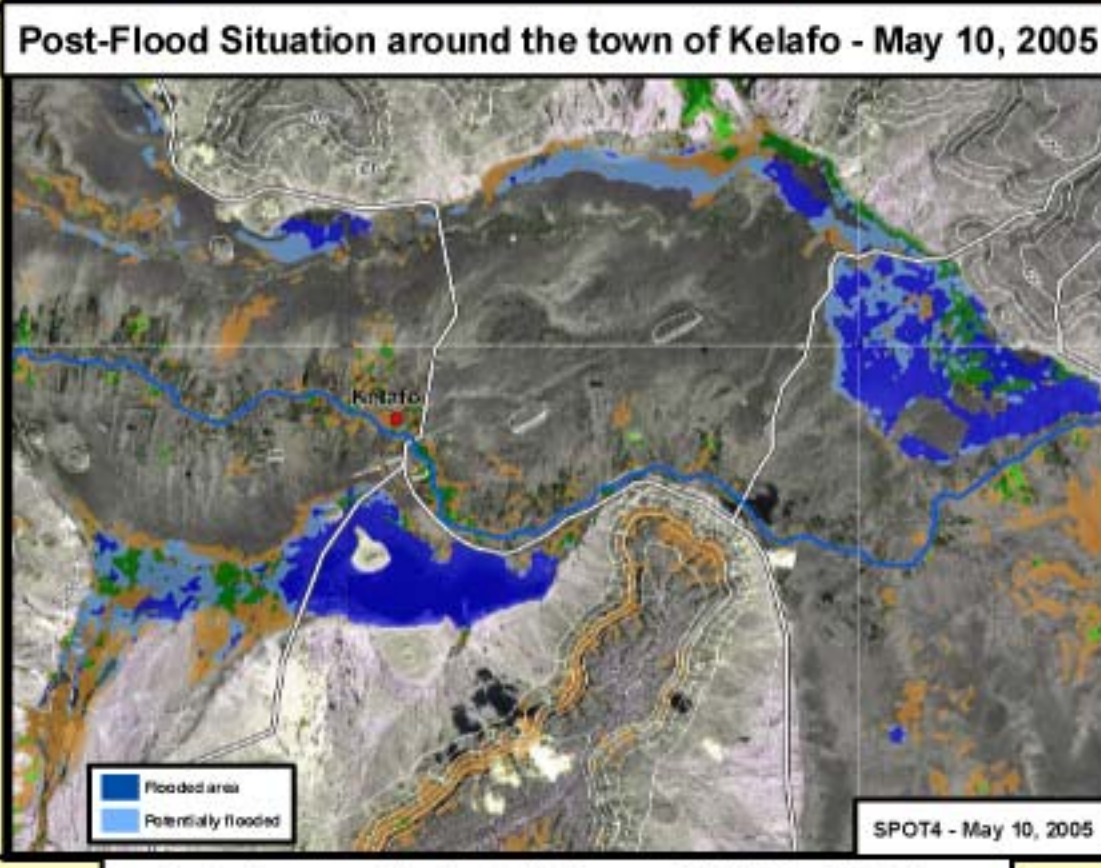
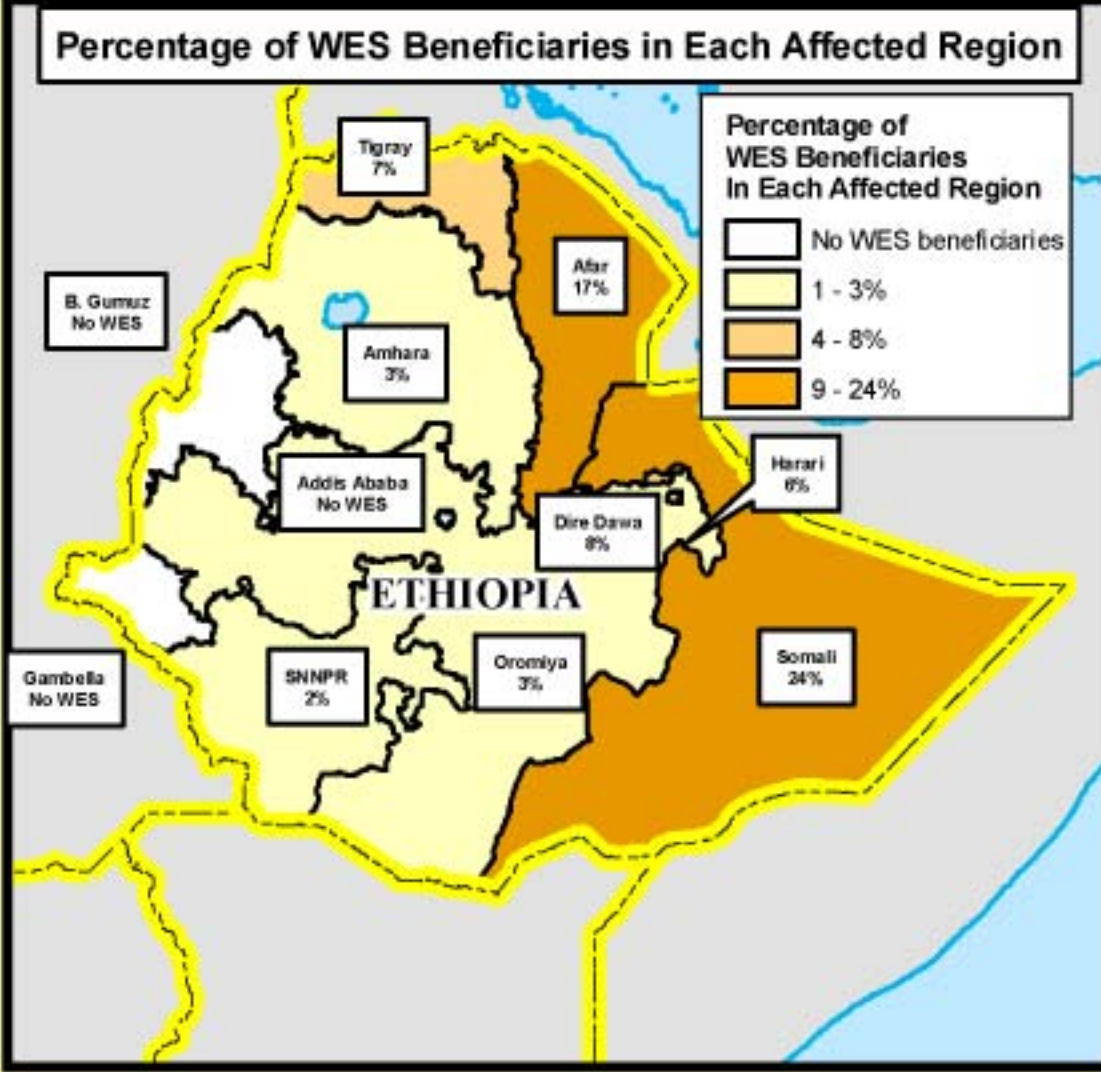
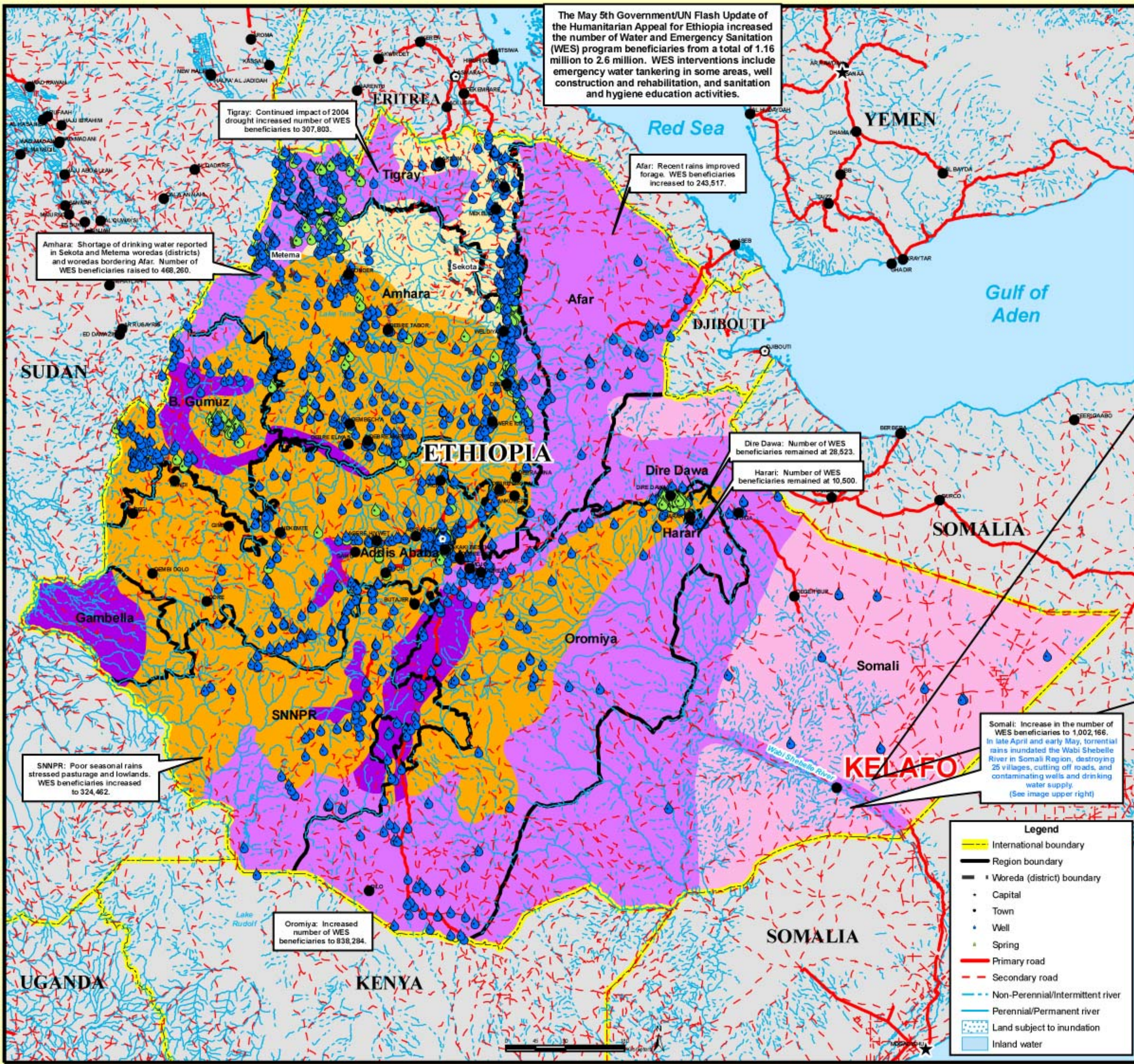


Ethiopia: Water Resources and Drought/Flooding Impact



Inset shows post-flood satellite image of Wabi Shebelle River around the town of Kelafo. Imagery courtesy of SPOT Image, processing by German Remote Sensing Data Center, UNOSAT and Respond Global Humanitarian Mapping Services, May 2005.

Major Water Resource Regions (large map at left)

- Highland 1 - Widespread and moderate to large quantities of surface water and/or groundwater. Good chemical quality (TDS 0-1500 ppm). Depth to groundwater 0-100m, exploitable in low relief areas.
- Highland 2 - Widespread and moderate to low quantities of surface water and/or groundwater. Good to fair chemical quality (TDS 0-3000 ppm). Depth to groundwater 0-100m, exploitable in low relief areas.
- Lowland 1 - Widespread and moderate to large quantities of surface water and/or groundwater. Variable chemical quality (TDS 500-3000 ppm). Depth to groundwater 0-150m.
- Lowland 2 - Localized and moderate to large quantities of groundwater specially along valleys. Fair to poor chemical quality (TDS 1000-3000 ppm). Depth to groundwater 0-270m.
- Lowland 3 - Localized and limited quantity of groundwater. Fair to poor chemical quality (TDS 1000-3000 ppm). Depth to groundwater 0-300m.

Sources:
 Ethiopian Institute of Geological Surveys, 1988
 Ethiopian National Ground-Water Database (ENGDA) - wells, springs
 U.S. Geological Survey - ENGDA and water resource region data
 UNOSAT - Pre and Post Ogaden Region Flooding May 12, 2005
 SPOT4 - May 10, 2005
 German Remote Sensing Data Center
 Respond Global Humanitarian Mapping Services
 Joint Government/UN Flash Update for Ethiopia, May 2005
 U.S. Census Bureau, based on 1994 Ethiopia Census

Humanitarian Information Unit
 Department of State
 hiu.state.gov
 HIU_info@state.gov