



**Daily Situation Report on Diarrhea and Cholera in Iraq  
Sitrep no. 110 up to 23 October 2008**

**1. Current Status**

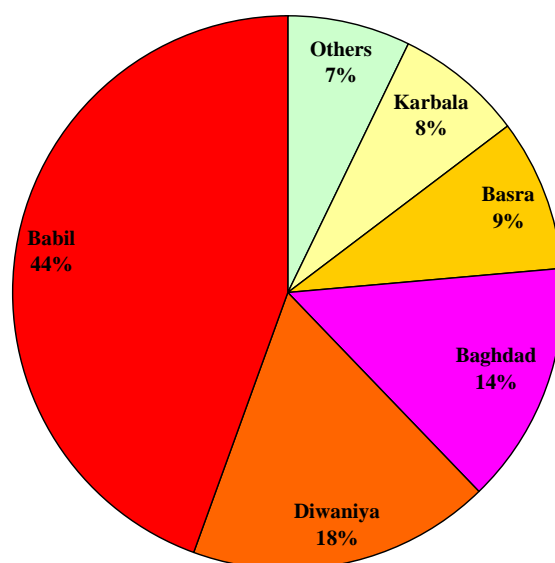
- The recent report of Iraq Ministry of Health indicates that 573 laboratory-confirmed Cholera cases have been detected and registered in Iraq, up to 23 October 2008.
- 54% of the cases are found in children below 5 years of age.
- There have been 8 deaths (6 males and 2 females). 50% of the deaths have been in below 5 year old children.
- Epidemiological findings have indicated that contaminated water is the most probable source of the out break.
- 572 cases have been identified as Inaba and 1 case as Ogawa serotypes.

**2. Summary**

- **Table (1) Suspect, confirmed cholera cases, death and dates of the first, most recent reported case by province, Iraq, 19 new cases were reported in last 24 hours**

Province	No. districts affected	Date first case	Date most recent case	Death	Under investigation	Laboratory confirmed cholera
Diala	1	09-09-08	09-09-08	0	0	1
Wasit	1	30-09-08	18-10-08	0	0	2
Erbil	2	07-10-08	07-10-08	0	0	2
Muthana	1	07-10-08	07-10-08	0	0	2
Missan	1	07-08-08	28-08-08	1	0	3
Anbar	2	07-09-08	01-10-08	0	0	8
Najaf	3	17-09-08	22-10-08	0	5	23
Kerbala	3	05-09-08	19-10-08	0	0	43
Basra	5	14-09-08	16-10-08	1	5	51
Baghdad	11	18-08-08	20-10-08	1	1	81
Diwanyia	4	20-09-08	21-10-08	2	20	102
Babil	4	28-08-08	20-10-08	3	15	255
<b>Total</b>	<b>37</b>	<b>07-08-08</b>	<b>22-10-08</b>	<b>8</b>	<b>46</b>	<b>573</b>

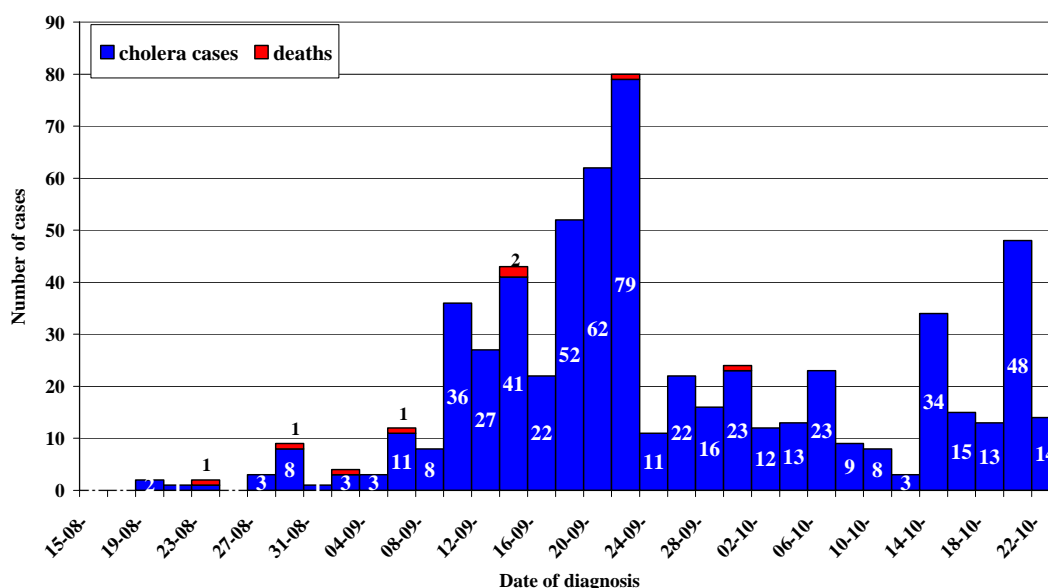
Fig. 1 Confirmed cholera cases by province up to 23 October 2008



### 3. Distribution of confirmed cholera by province:

Fig 1 above shows that the majority (44%) of confirmed cholera were reported from Babil province followed by Diwaniya provinces (18%), Baghdad (14%), Basra (9%) , Karbala (8%) , while (Missan, Diala, Najaf, Anbar, Wasit, Muthana and Erbil) reported the remaining (7%) of the total cases.

Fig. 2 Reported cholera cases and deaths by date of diagnosis, Iraq, 14/08-23/10/2008



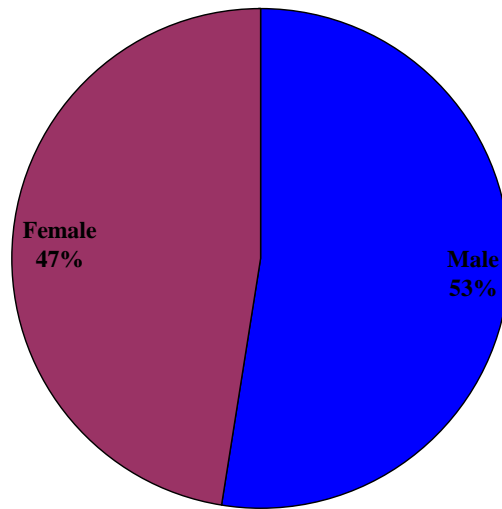
### 4. Epidemic curve:

Fig. 2, shows that unlike last year's explosive outbreak this year's outbreak is gradually building up; it seems to have started mid-August, peaked on 22/09 at 79 cases and then started to fade out during the period 24/9 to 12/10 /2008; the second peak of 23 cases on 06/10 may be due to late reporting of accumulate cases that occurred during EID holidays. However the third and 4<sup>th</sup> peaks on 14&12 October is mainly due to a second wave mainly in Diwaniya, It is early to reach a solid conclusion about the trend of the outbreak as 46 cases are still under investigation and the new wave of cases might increase and spread to other districts and provinces.

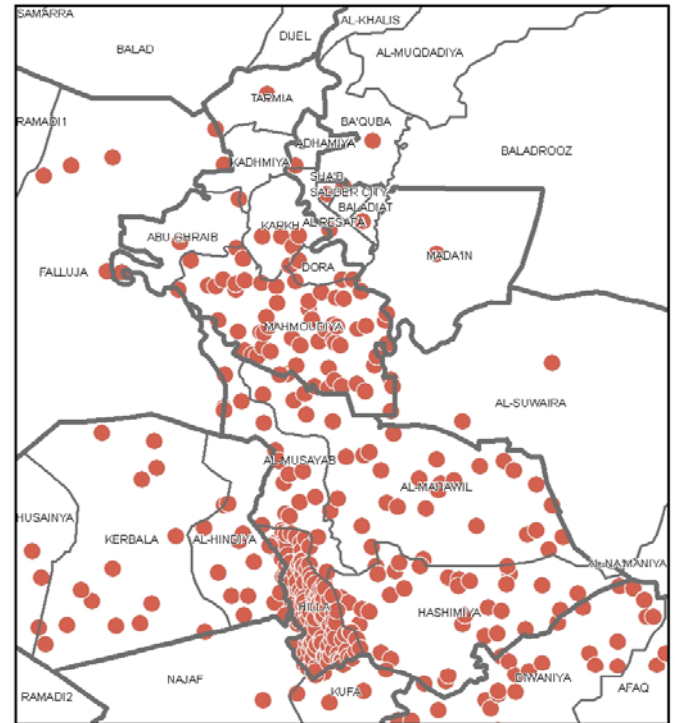
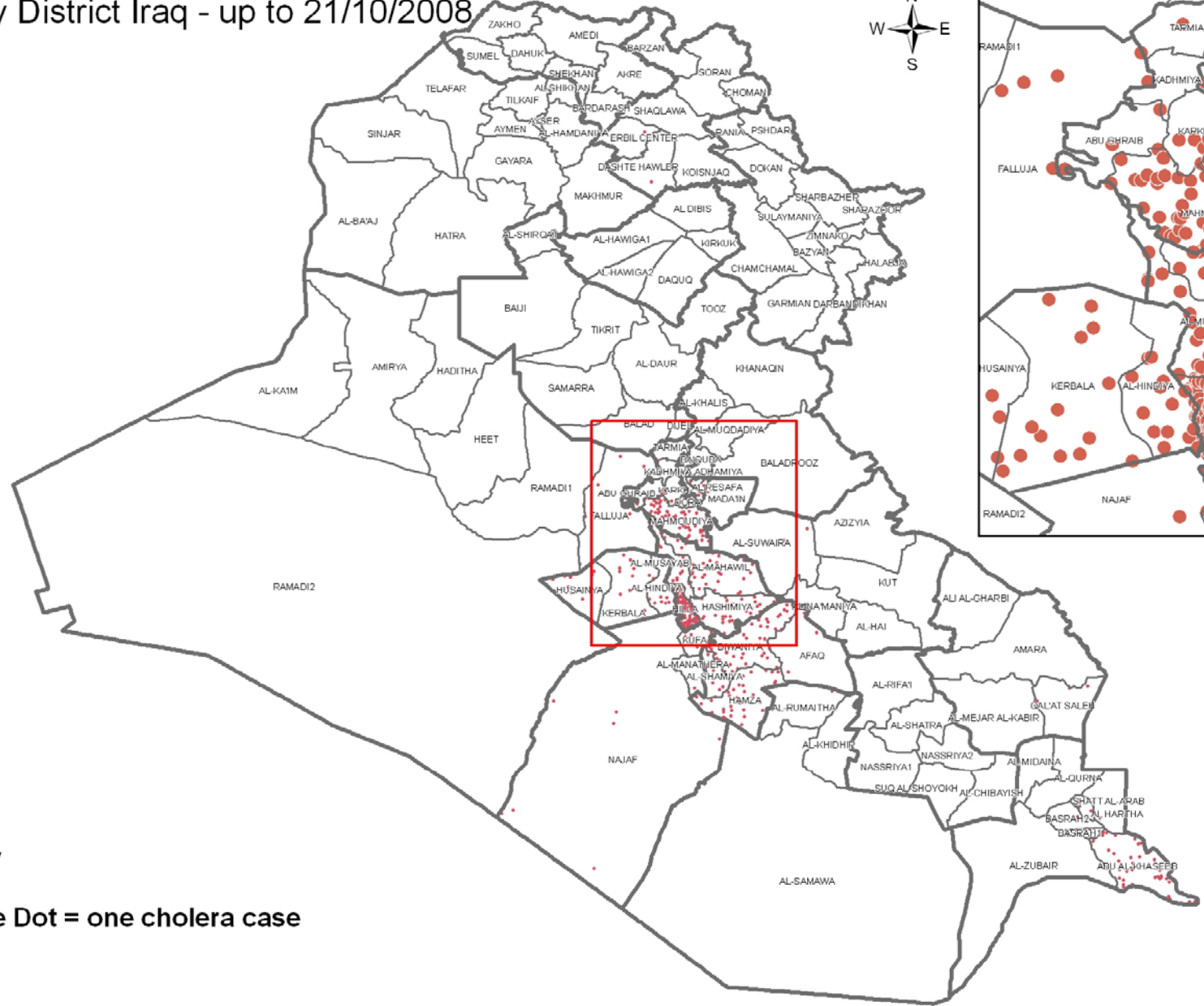
## 5. Distribution of cases by sex:

Fig. 4, below shows that cases were almost equally distributed between the two sexes.

**Fig. 3 Cholera cases by sex, up to 23/10/ 2008**



Confirmed Cholera Cases  
by District Iraq - up to 21/10/2008



Key  
One Dot = one cholera case