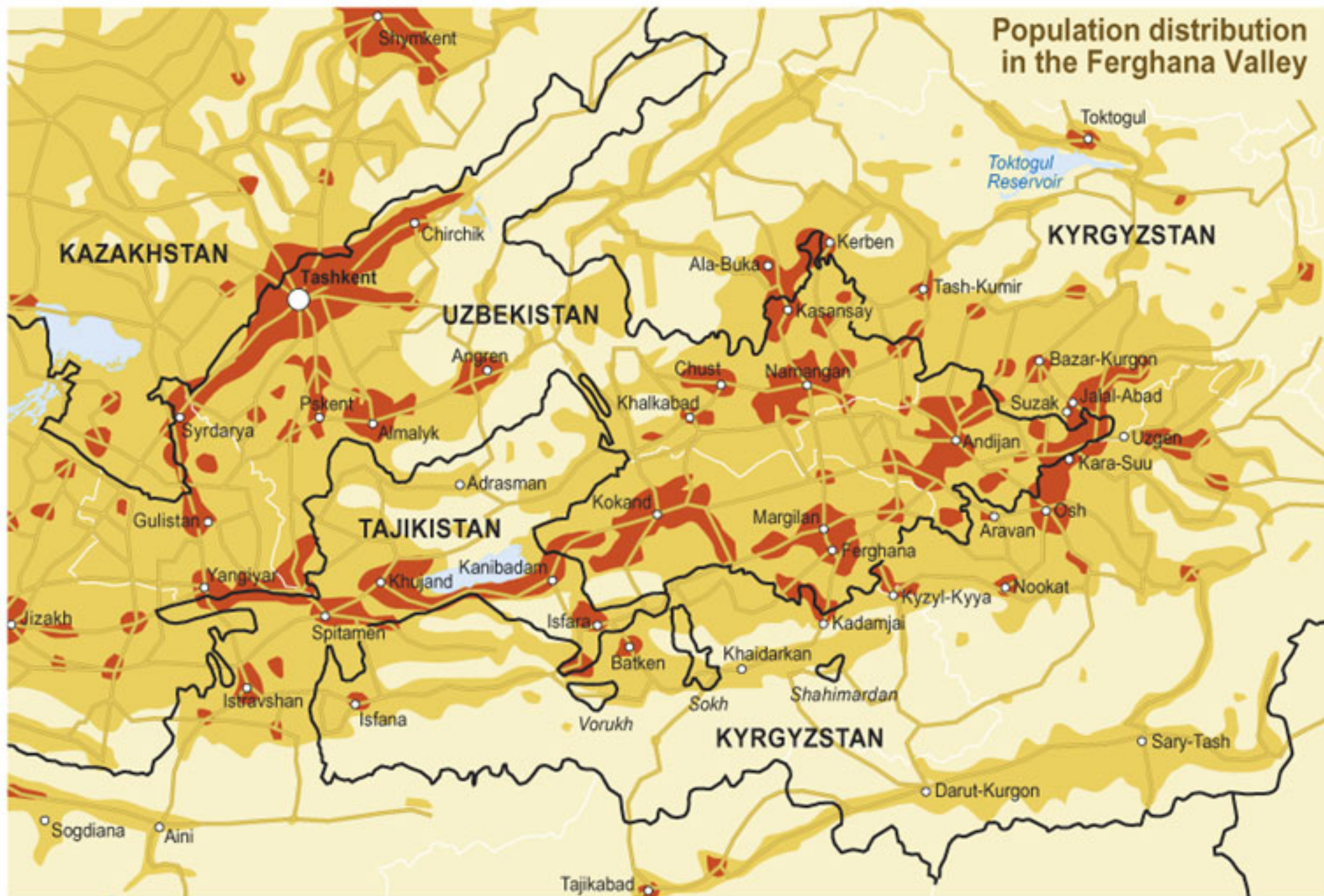



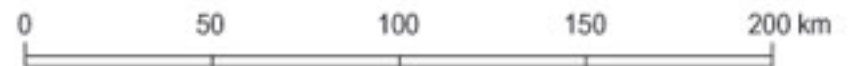


# Population distribution in the Ferghana Valley



## Population density

-  Densely populated areas (50 to 500 inhabitants per km<sup>2</sup>)
-  Moderately populated areas (3 to 50 inhabitants per km<sup>2</sup>)
-  Scarcely populated areas (up to 3 inhabitants per km<sup>2</sup>)



THE MAP DOES NOT IMPLY THE EXPRESSION OF ANY OPINION ON THE PART OF THE AGENCIES CONCERNING THE LEGAL STATUS OF ANY COUNTRY, TERRITORY, CITY OR AREA OF ITS AUTHORITY, OR DELINEATION OF ITS FRONTIERS AND BOUNDARIES.

MAP BY VIKTOR NOVIKOV AND PHILIPPE REKACEWICZ - UNEP/GRID-ARENDAL - APRIL 2005