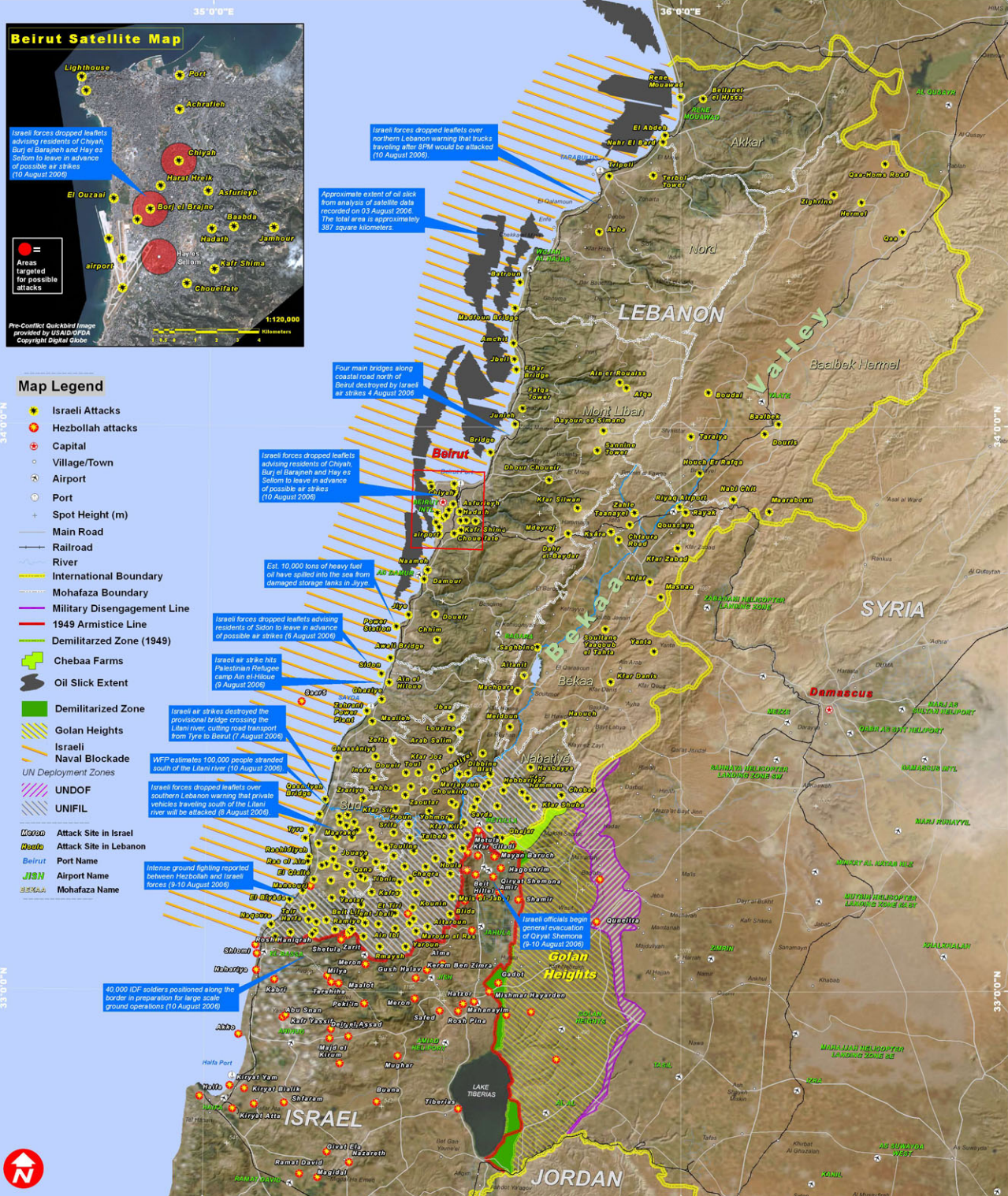


Situation Map: Middle East Crisis

12 July - 11 August 2006
v 1.8



This map illustrates a preliminary situation of the reported attacks by Israeli and Hezbollah forces from 12 July to 11 August 2006. Attack locations have been taken exclusively from public media sources. This map was prepared on request for UN OCHA. Locations shown may not be accurate and do not represent all known attack locations. The oil slick extent was produced by Teleposat (Macrost) with support from DLR (RakEos) based on Envisat ASAR wide swaths imagery from August 03, 2006, provided by the International Charter Space and Major Disasters.

The depiction and use of toponyms, geographic names and related data shown here are not warranted to be error-free nor do they imply official endorsement or acceptance by the United Nations. This map was produced by the United Nations Institute for Training and Research (UNITAR) Operational Satellite Applications Programme (UNOSAT). UNOSAT provides satellite imagery and related geographic information to UN humanitarian and development agencies and their implementing partners.

UNOSAT

satellite imagery for all

www.unosat.org

Contact Information: info@unosat.org
24/7 Hotline: +41 76 487 4998