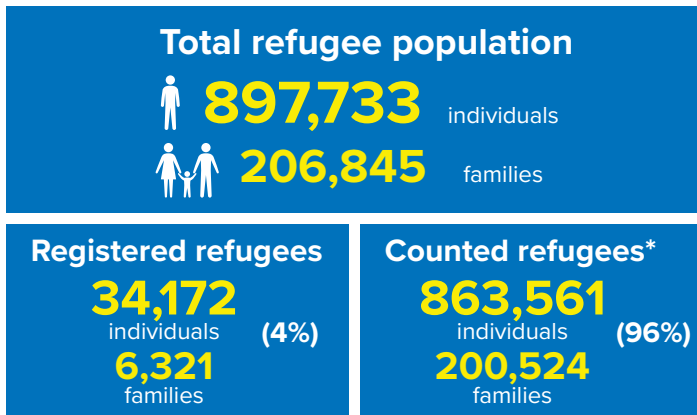
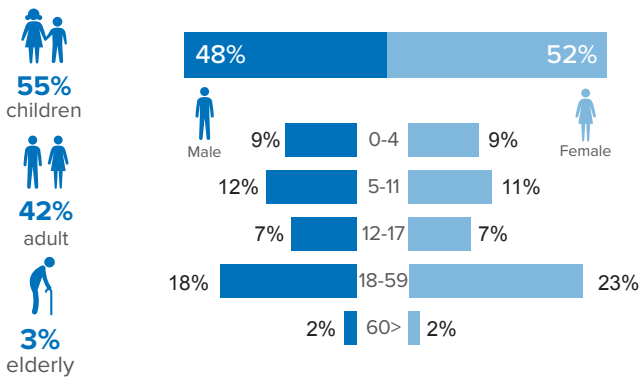


## Refugee population figure

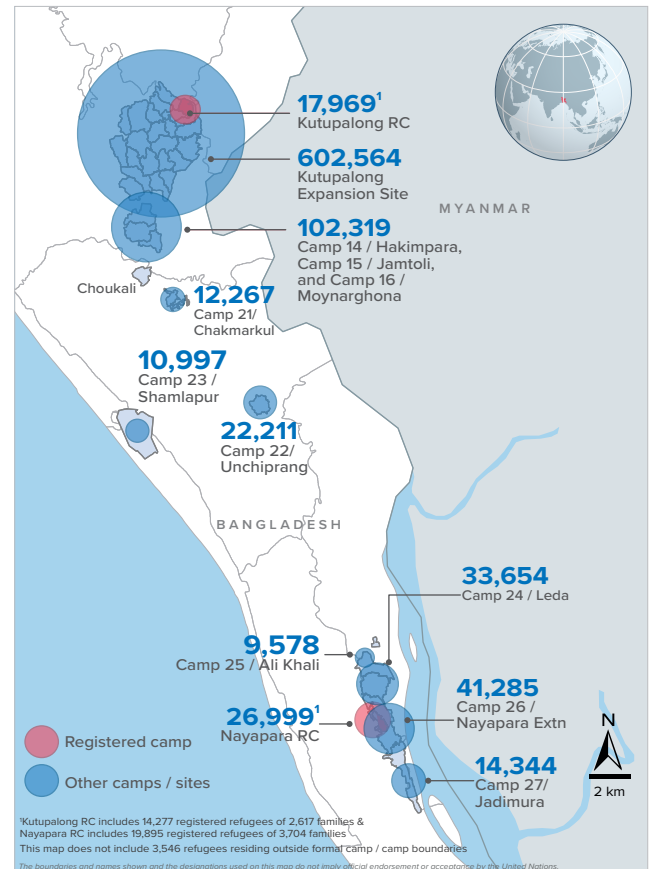


\* Some refugees living in host communities and in certain locations beyond the camp boundaries may not have been counted.

## Demography

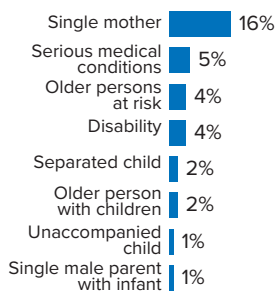


## Refugee population density



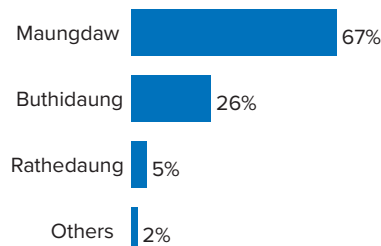
## Specific needs

**31%** of the families have been identified with at least one protection vulnerability\*



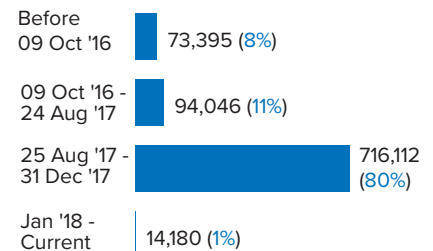
## Place of origin

**67%** of the Rohingya refugees comes from Maungdaw Township



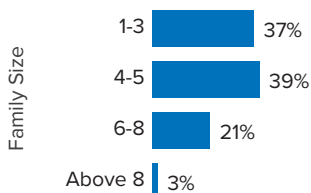
## Period of arrival

**80%** of current population arrived between Aug. and Dec 2017



## Family size breakdown

**39%** of the families have a standard family size of 4-5 persons



## Linking exercise

The Linking Exercise, conducted from December 2017 until February 2018, was a collaborative effort between the Government of Bangladesh and the United Nations High Commissioner for Refugees that aimed to merge the family based Rohingya population data collected through the Family Counting Exercise with attributes of the individual Rohingya population data collected by the Ministry of Home Affairs.

The exercise was conducted with a view to creating a unified dataset with individual data grouped into families which will be used to better protect and assist families.

\*Figures are the percentage of total families with at least one person with a specific need. More than one specific need may be present within one family.

## Age and gender breakdown by camp/site

Camp	Infant female below 1	Infant male below 1	1-4 Children female	1-4 Children male	5-11 Children female	5-11 Children male	12-17 Children female	12-17 Children male	18-59 Adult female	18-59 Adult male	60+ Elderly female	60+ Elderly male	Total Families	Total Individuals
Camp 15	946	894	3,535	3,687	5,304	5,470	3,424	3,600	11,510	9,180	904	905	11,155	49,359
Camp 13	713	761	3,077	3,174	4,482	4,742	2,761	2,835	9,718	7,695	741	681	9,699	41,380
Camp 26	698	619	3,146	3,162	4,773	5,245	2,987	2,786	9,865	6,807	639	558	9,454	41,285
Camp 1W	752	749	2,909	2,907	4,380	4,450	2,673	2,759	9,528	7,654	854	751	9,324	40,366
Camp 1E	668	738	2,819	2,985	4,298	4,522	2,667	2,778	9,384	7,806	799	702	9,252	40,166
Camp 3	685	734	3,002	3,112	4,156	4,379	2,498	2,685	9,310	7,292	697	585	9,103	39,135
Camp 7	698	706	2,972	3,090	4,203	4,401	2,604	2,561	9,052	7,109	721	642	9,217	38,759
Camp 9	629	567	2,805	2,808	4,010	4,069	2,500	2,494	8,590	6,942	715	698	8,695	36,827
Camp 24	509	522	2,285	2,500	4,040	4,159	2,316	2,411	8,027	5,919	546	420	7,784	33,654
Camp 10	628	619	2,576	2,701	3,393	3,751	2,144	2,080	7,764	6,092	597	522	7,619	32,867
Camp 8W	552	527	2,649	2,602	3,468	3,676	2,056	2,161	7,715	6,154	611	542	7,529	32,713
Camp 8E	503	502	2,264	2,353	3,396	3,450	2,323	2,249	7,389	5,936	546	554	7,253	31,465
Camp 14	549	576	2,260	2,493	3,323	3,668	2,228	2,216	7,150	5,741	585	517	6,890	31,306
Camp 4	569	602	2,347	2,502	3,479	3,634	2,006	2,006	7,386	5,774	510	392	7,676	31,207
Camp 11	540	569	2,329	2,356	3,333	3,543	2,122	2,182	7,171	5,876	535	493	7,038	31,049
Camp 2E	549	518	2,262	2,314	3,290	3,544	1,779	1,849	7,143	5,376	517	439	7,121	29,580
Nayapara RC*	87	90	1,556	1,628	2,921	3,005	2,305	2,364	7,163	5,019	447	414	5,723	26,999
Camp 18	467	499	2,205	2,252	2,884	3,000	1,800	1,697	6,424	5,018	357	365	6,592	26,968
Camp 2W	420	421	1,898	2,002	2,871	3,141	1,567	1,588	6,003	4,728	487	377	5,845	25,503
Camp 5	438	480	1,955	2,055	2,757	2,822	1,546	1,635	5,939	4,626	459	413	6,030	25,125
Camp 6	512	454	2,004	2,107	2,697	2,862	1,458	1,560	5,783	4,537	430	394	5,780	24,798
Camp 12	375	366	1,636	1,741	2,418	2,678	1,624	1,578	5,212	4,050	417	361	4,975	22,456
Camp 22	411	382	1,596	1,793	2,544	2,617	1,677	1,671	4,843	3,967	377	333	4,584	22,211
Camp 16	434	399	1,597	1,679	2,333	2,548	1,523	1,438	4,983	4,009	386	325	4,845	21,654
Camp 19	336	321	1,590	1,668	2,242	2,496	1,425	1,470	4,832	3,761	345	288	4,800	20,774
Kutupalong RC*	77	57	1,020	1,159	1,915	2,050	1,477	1,424	4,582	3,693	268	247	3,533	17,969
Camp 17	244	290	1,328	1,324	1,773	1,835	989	978	3,734	2,851	230	231	3,721	15,807
Camp 27	242	217	1,101	1,156	1,681	1,718	1,032	1,068	3,327	2,396	219	187	3,168	14,344
Camp 21	228	213	908	965	1,345	1,408	759	799	2,960	2,364	184	134	3,008	12,267
Camp 23	181	200	810	847	1,455	1,494	634	653	2,695	1,696	171	161	2,669	10,997
Camp 25	141	159	715	708	1,119	1,199	748	693	2,227	1,588	168	113	2,160	9,578
Camp 20	127	136	549	630	777	836	405	438	1,757	1,302	122	97	1,731	7,176
Camp 4 Extension	92	85	330	379	493	524	265	243	1,075	844	66	58	1,072	4,454
Camp 20 Extension	78	70	323	338	420	439	244	236	965	768	58	50	977	3,989
No camp**	70	57	269	289	405	413	235	247	816	634	59	52	823	3,546
<b>Total</b>	<b>15,148</b>	<b>15,099</b>	<b>66,627</b>	<b>69,466</b>	<b>98,378</b>	<b>103,788</b>	<b>60,801</b>	<b>61,432</b>	<b>212,022</b>	<b>165,204</b>	<b>15,767</b>	<b>14,001</b>	<b>206,845</b>	<b>897,733</b>

\*Kutupalong RC includes 14,277 registered refugees of 2,617 families & Nayapara RC includes 19,895 registered refugees of 3,704 families

\*\*This represents refugees residing outside formal camp boundaries

## Population figures by period of arrival

Arrival Period	Before 09 Oct 2016		09 Oct 2016 - 24 Aug 2017		25 Aug 2017 - 31 Dec 2017		01 Jan 2018 - Current date		Total Families	Total Individuals
Camp	Total Families	Total Individuals	Total Families	Total Individuals	Total Families	Total Individuals	Total Families	Total Individuals		
Camp 15	11	47	765	3,394	10,375	45,898	4	20	11,155	49,359
Camp 13	12	48	787	3,443	8,859	37,731	41	158	9,699	41,380
Camp 26	72	352	829	3,686	8,114	35,349	439	1,898	9,454	41,285
Camp 1W	25	102	1,038	4,465	8,237	35,720	24	79	9,324	40,366
Camp 1E	44	197	1,636	7,034	7,540	32,817	32	118	9,252	40,166
Camp 3	28	128	971	4,235	8,064	34,616	40	156	9,103	39,135
Camp 7	126	553	1,077	4,642	7,946	33,279	68	285	9,217	38,759
Camp 9	93	373	2,109	8,576	6,474	27,815	19	63	8,695	36,827
Camp 24	2,178	10,551	524	2,213	5,066	20,838	16	52	7,784	33,654
Camp 10	12	53	616	2,632	6,972	30,109	19	73	7,619	32,867
Camp 8W	43	188	660	2,879	6,753	29,365	73	281	7,529	32,713
Camp 8E	34	142	853	3,732	6,345	27,508	21	83	7,253	31,465
Camp 14	10	37	601	2,789	6,270	28,438	9	42	6,890	31,306
Camp 4	44	190	316	1,307	7,074	28,694	242	1,016	7,676	31,207
Camp 11	1	3	1,081	4,804	5,953	26,230	3	12	7,038	31,049
Camp 2E	3,221	13,632	1,687	7,124	2,184	8,731	29	93	7,121	29,580
Nayapara RC*	3,750	20,077	250	971	1,687	5,845	36	106	5,723	26,999
Camp 18	12	48	166	686	6,388	26,138	26	96	6,592	26,968
Camp 2W	1,819	8,346	1,408	6,099	2,571	10,899	47	159	5,845	25,503
Camp 5	40	167	527	2,239	5,438	22,623	25	96	6,030	25,125
Camp 6	86	385	1,078	4,862	4,599	19,490	17	61	5,780	24,798
Camp 12	5	29	253	1,159	4,690	21,143	27	125	4,975	22,456
Camp 22	6	39	208	1,005	4,361	21,139	9	28	4,584	22,211
Camp 16	5	25	285	1,265	4,551	20,350	4	14	4,845	21,654
Camp 19	4	13	396	1,788	4,219	18,220	181	753	4,800	20,774
Kutupalong RC*	2,827	15,146	157	617	534	2,164	15	42	3,533	17,969
Camp 17	38	163	178	725	2,384	10,010	1,121	4,909	3,721	15,807
Camp 27	29	142	279	1,315	2,712	12,209	148	678	3,168	14,344
Camp 21	12	53	144	626	2,729	11,139	123	449	3,008	12,267
Camp 23	252	1,155	287	1,222	2,114	8,551	16	69	2,669	10,997
Camp 25	18	90	254	1,133	1,884	8,336	4	19	2,160	9,578
Camp 20	56	245	107	469	1,255	5,196	313	1,266	1,731	7,176
Camp 4 Extension	47	192	80	353	892	3,687	53	222	1,072	4,454
Camp 20 Extension	56	248	62	275	712	2,905	147	561	977	3,989
No camp**	51	236	66	282	682	2,930	24	98	823	3,546
<b>Grand Total</b>	<b>15,067</b>	<b>73,395</b>	<b>21,735</b>	<b>94,046</b>	<b>166,628</b>	<b>716,112</b>	<b>3,415</b>	<b>14,180</b>	<b>206,845</b>	<b>897,733</b>

\*Kutupalong RC includes 14,277 registered refugees of 2,617 families & Nayapara RC includes 19,895 registered refugees of 3,704 families

\*\*This represents refugees residing outside formal camp boundaries

Creation date: 15 October 2018 Sources: UNHCR Feedback: bgdcoim@unhcr.org

## Population figures by specific needs

Camp	Families with separated children	Families with unaccompanied children	Families with a person with disability	Families with older person at risk	Families with older person at risk with children	Families with people with serious medical condition	Single male parents with infants	Single female parent	Families with people with specific needs
Camp 26	171	54	282	358	114	216	81	2,193	3,251
Camp 15	236	60	355	592	199	463	63	1,610	3,206
Camp 1E	172	45	553	459	327	490	57	1,177	2,947
Nayapara RC*	177	41	608	164	50	1,197	35	1,191	2,824
Camp 7	225	29	354	368	249	454	106	1,283	2,789
Camp 13	244	79	311	396	209	345	65	1,427	2,786
Camp 1W	164	32	393	448	215	449	66	1,261	2,751
Camp 3	196	58	376	362	289	321	65	1,423	2,665
Camp 24	177	73	301	287	121	257	43	1,641	2,638
Camp 9	149	73	384	397	263	489	95	1,051	2,542
Camp 4	242	91	191	297	201	274	100	1,466	2,517
Camp 10	126	79	383	338	242	510	93	1,040	2,425
Camp 8E	153	70	342	369	241	415	84	1,066	2,333
Camp 2E	164	53	266	251	199	309	52	1,205	2,209
Camp 18	154	62	240	223	168	299	81	1,153	2,104
Camp 5	160	70	217	288	167	212	61	1,093	1,962
Camp 11	168	61	267	293	157	230	66	1,066	1,945
Camp 14	119	46	185	314	138	305	43	970	1,855
Camp 6	161	43	225	245	125	333	39	833	1,843
Camp 2W	111	18	275	238	115	263	63	827	1,718
Camp 8W	91	36	240	271	150	287	80	739	1,681
Kutupalong RC	54	14	339	85	31	764	10	526	1,503
Camp 19	123	34	192	220	81	118	46	764	1,413
Camp 12	81	34	144	206	103	139	32	774	1,375
Camp 16	92	22	170	202	81	160	36	710	1,327
Camp 17	103	19	133	147	78	115	36	667	1,152
Camp 22	69	17	159	156	77	154	16	582	1,118
Camp 27	55	13	100	88	34	63	21	733	1,029
Camp 23	50	12	74	97	43	70	11	753	1,022
Camp 21	66	23	110	96	32	106	35	515	899
Camp 25	38	23	75	83	33	87	18	498	759
Camp 20	25	12	93	68	47	75	19	290	552
Camp 4 Extension	18	12	50	37	32	42	11	162	315
Camp 20 Extension	26	13	44	38	25	41	12	142	287
No camp	25	8	27	42	14	23	9	152	268
<b>Total</b>	<b>4,385</b>	<b>1,429</b>	<b>8,458</b>	<b>8,523</b>	<b>4,650</b>	<b>10,075</b>	<b>1,750</b>	<b>32,983</b>	<b>64,010</b>