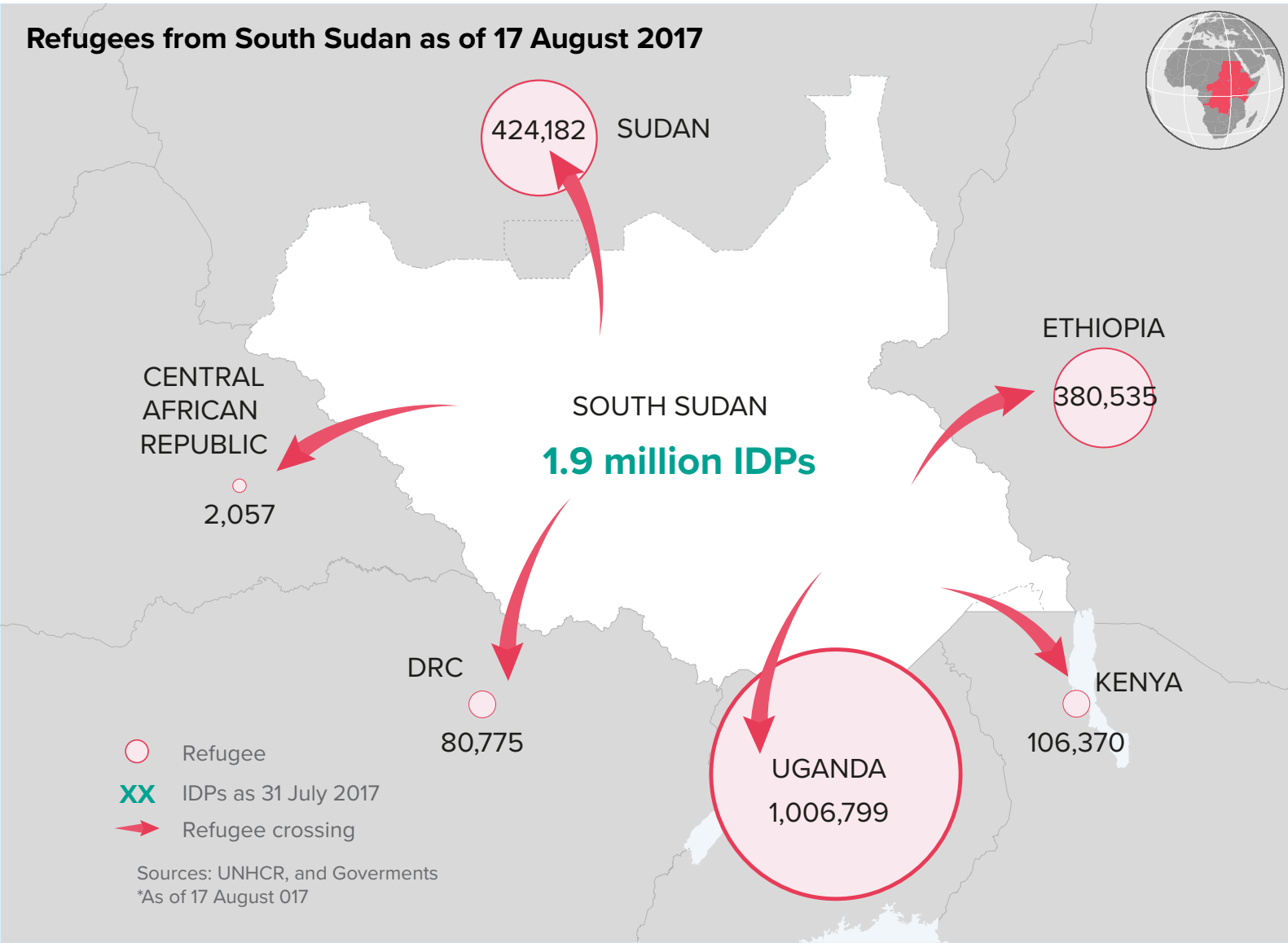


SOUTH SUDAN SITUATION

REGIONAL REFUGEE RESPONSE PLAN - midyear update

January - June 2017

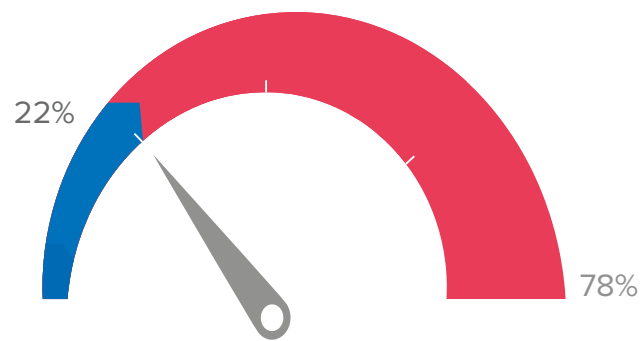
Refugees from South Sudan as of 17 August 2017



Regional Update

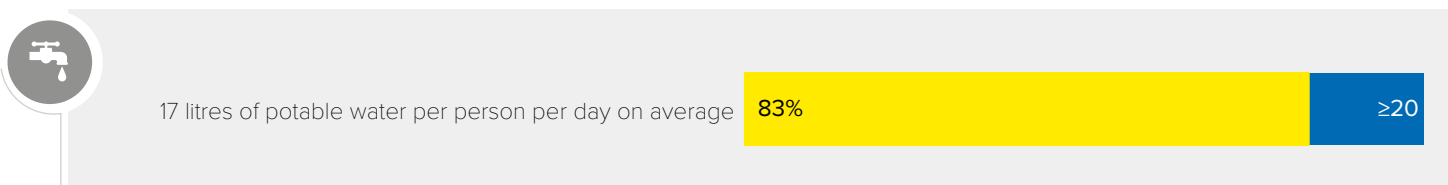
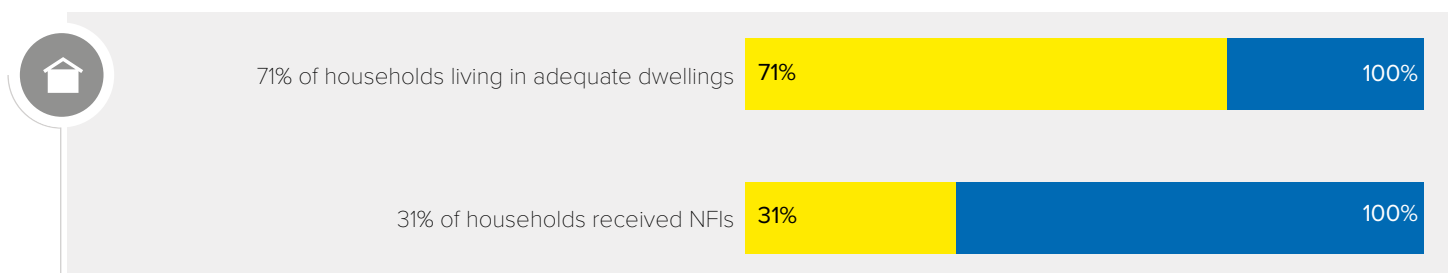
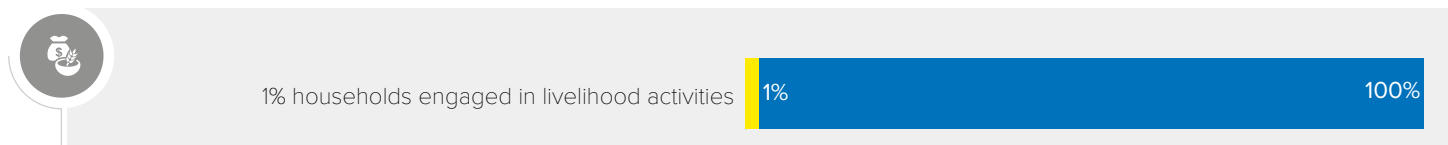
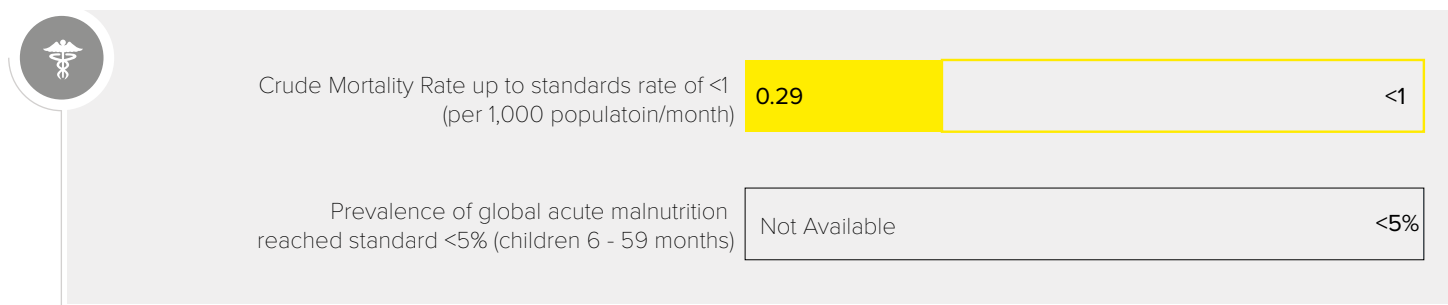
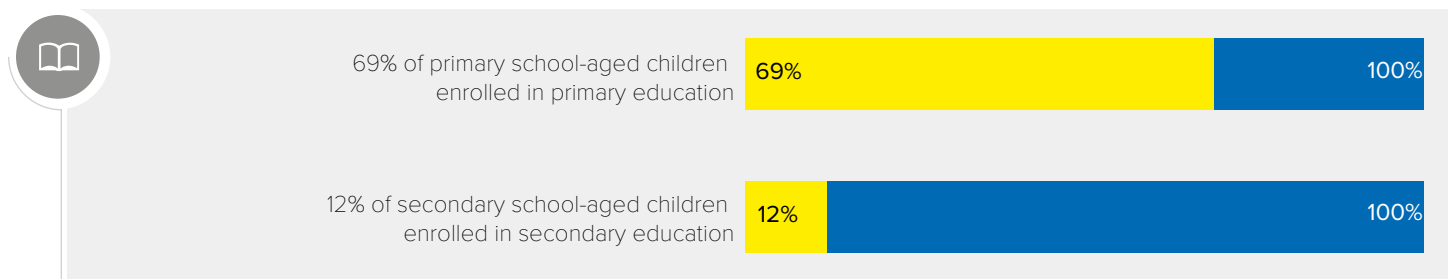
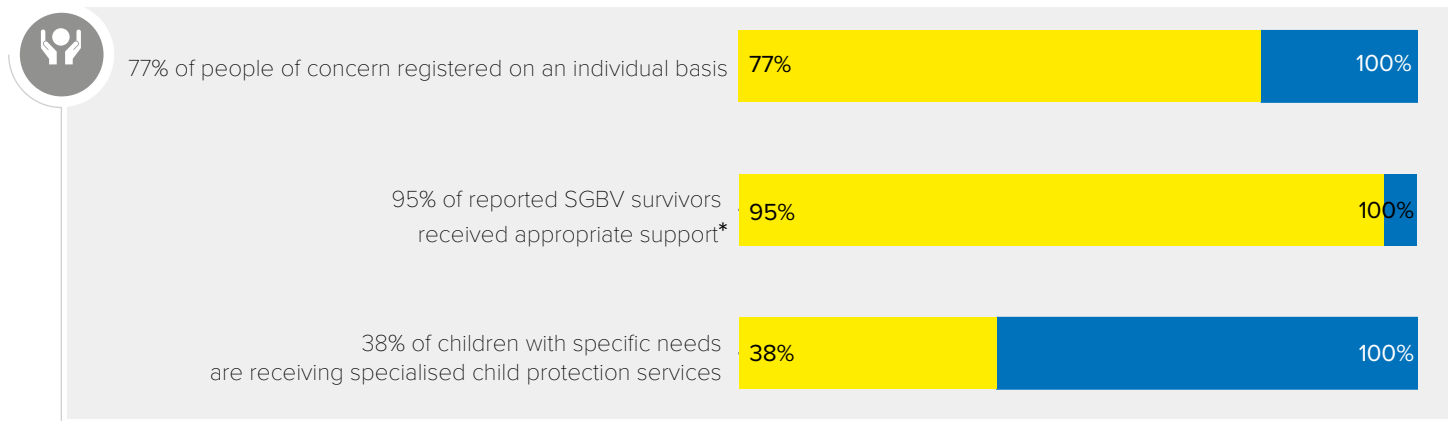
The 2017 Regional Refugee Response Plan for the South Sudan situation is in its third iteration since 2013. Several mediation attempts to revitalize implementation of Cessation of Hostilities (CoH) agreement did not bear fruit escalating the conflict and engulfing 4 million people, one third of South Sudan's 12 million people into forced displacement. The refugee planning figure of 2.13 South Sudanese forecast until year's end for Uganda, Kenya, Ethiopia, Sudan, the Democratic Republic of Congo and the Central African Republic is close to being surpassed as of August 2017 when the 2 million refugee mark was reached. Uganda hosts in excess of 1 million refugees whereas Sudan and Ethiopia respectively are edging closer to receiving half a million. DRC hosts over 80,000 while CAR 2000 living in areas prone to attacks by armed groups. Eleven new camps or settlements opened in the region in the past 12 months falling far short of accommodating the needs of the influx. Despite urgent appeals the response received just 25% of the USD 1.4 billion required. South Sudan's neighbours uphold territorial asylum but the rate of new arrivals is rapidly straining reception capacities and fraying peaceful coexistence between refugees and their hosts.

RRRP FUNDING LEVEL -27 July 2017



TOTAL REQUIREMENTS: 1,383,971,569
FUNDED: 303,536,073

REGIONAL ACHIEVEMENTS AND GAPS January - June 2017



* Does not include Sudan