

Total September Rainfall Accumulation for East Africa - 2007

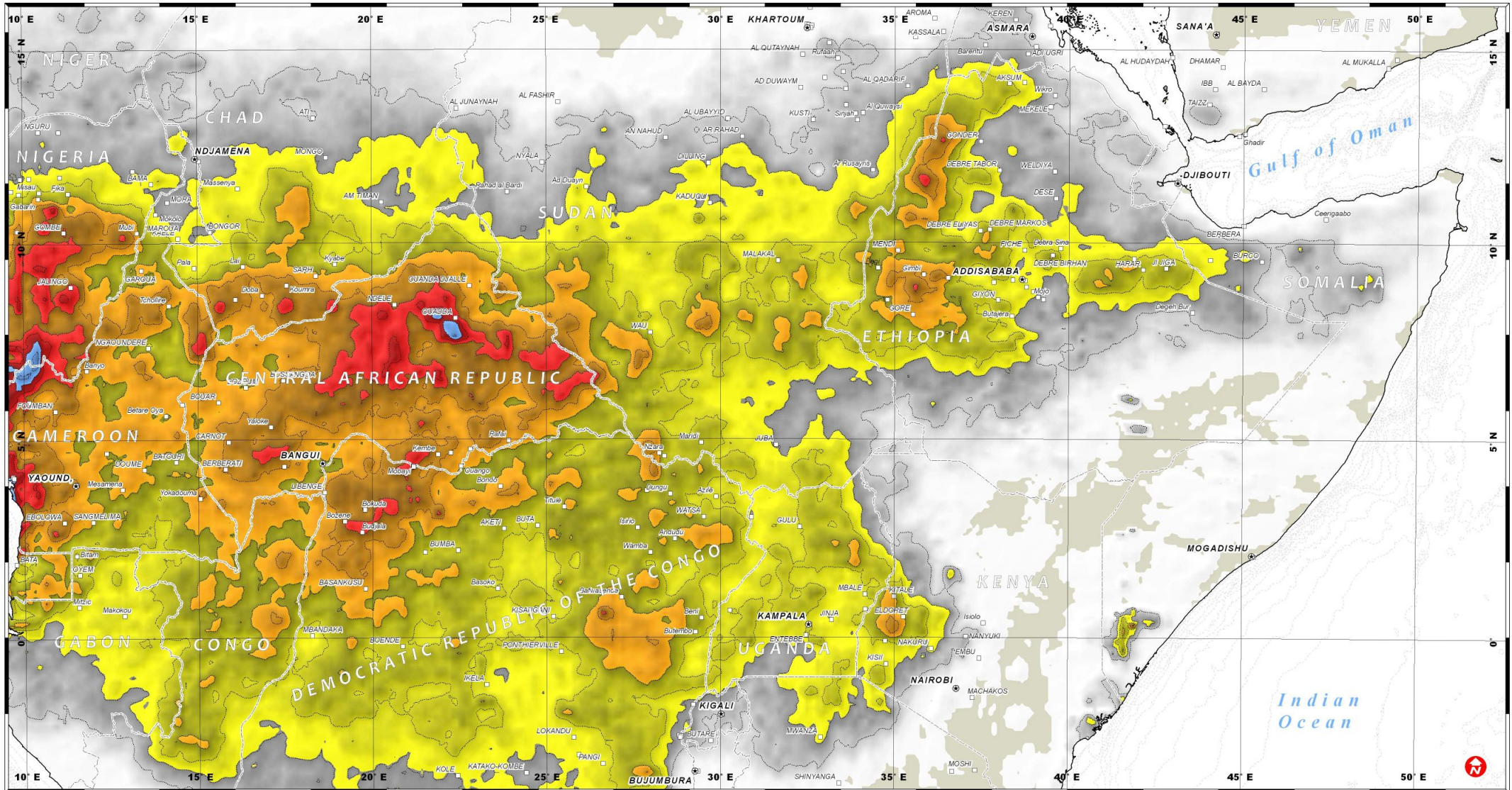
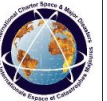
Rainfall from Daily NOAA-CMORPH Estimates (1-30 September 2007)

**Flood Event
Sept. 2007**

8 October 2007

Version 1.1

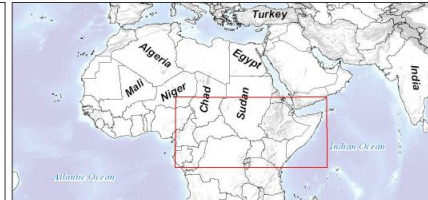
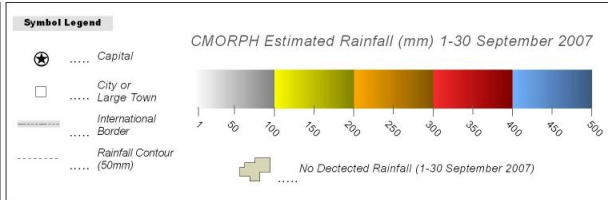
Glide No: FL-2007-000153-GHA



Map Information

This rainfall estimate was derived from the daily global CMORPH precipitation dataset at a spatial resolution of approximately 10km for this region, and was calculated using microwave and infrared data from geostationary satellites. It is possible that precipitation levels may have been underestimated for local areas, and is not a substitute for ground station measurements. For more information: <http://www.cmr.noaa.gov/>. This is a preliminary analysis and has not yet been validated in the field. UNOSAT is collaborating with WFP and ITHACA in support to the humanitarian operation in West Africa.

The depiction and use of boundaries, geographic names and related data shown here are not warranted to be error-free nor do they imply official endorsement or acceptance by the United Nations. This map was produced by the United Nations Institute for Training and Research (UNITAR) Operational Satellite Applications Programme (UNOSAT). UNOSAT provides satellite imagery and related geographic information to UN humanitarian and development agencies and their implementing partners.



Map Scale for A2: 1:8,000,000
1 Centimeter = 80 Kilometers

Rainfall Data CMORPH (NOAA)
Spatial Resolution 0.10 Degrees
Dates 1-30 Sept. 2007
GIS Data NOAA, NSA, GIST
Bathymetry Data GEBCO

Elevation Data SRTM (90m) - NASA
Map Production UNOSAT (8 October 2007)
Projection Lambert Conformal Conic
Datum WGS 1984

Contact Information: info@unosat.org
24/7 Hotline: +41 76 487 4998

UNOSAT
satellite imagery for all
www.unosat.org